

**EMBREY BUILDERS, LLC.**  
 1020 N. E. Loop 410, Suite 700  
 San Antonio, TX 78209  
 Ph: (210) 824-6044 Fax: (210) 824-7656

RFI

To: Jordan & Skala Engineers, Inc. RFI #: 37  
 14240 Midway Road, Suite 350 Date: 1/23/2012  
 Dallas, TX 75244 Job: EB-02 Keller Springs Lofts  
 Ph: 469/385-1616 Fax: 469/385-1615 Phone: 877-777-5115

CC:  
 Subject: 6" main sanitary trunk line  
 Drawing: P-3.0C P-3.0E Spec Section:  
 Cost Impact: None Schedule Impact: None

**Request:** Date Required: 1/25/2012  
 On sheet P-3.0C the main sanitary trunk line is shown running in the center of the corridors. It is 6" running north along the east side of the garage. It joins another 6" running east along the north side of the garage. So we have a 6" joining with another 6" but there is no designation as to the size of the line after that until it meets the 10" that leaves the building. Sheet P-3.0E gives no designation to the size of this line either. I feel this may be an oversight and the intention would be to have the line enlarge to an 8" after the (2) 6" lines merge. Please advise and respond as we are going to be installing these lines in the next two days.

**Requested by:** Bryan Plickler  
 Embrey Partners, Ltd.

**Response:**  
 The line should increase to an 8" once the two 6" lines come together as mentioned above.

Russell Cox - Jordan & Skala

---

Answered by \_\_\_\_\_  
 Company \_\_\_\_\_ Date \_\_\_\_\_

**EMBREY BUILDERS, LLC.**  
 1020 N. E. Loop 410, Suite 700  
 San Antonio, TX 78209  
 Ph: (210) 824-6044 Fax: (210) 824-7656

RFI

To: Jordan & Skala Engineers, Inc. RFI #: 61  
 14240 Midway Road, Suite 350 Date: 2/7/2012  
 Dallas, TX 75244 Job: EB-02 Keller Springs Lofts  
 Ph: 469/385-1616 Fax: 469/385-1615 Phone: 877-777-5115

CC: David Gallagher (Embrey Build (Embrey Construction LLC))  
 Subject: Pool and fountain equipment drain requirements  
 Drawing: landscape 5C Spec Section:  
 Cost Impact: None Schedule Impact: None

**Request:** Date Required: 2/14/2012  
 Jordan and Skala,  
 In discussing the courtyards fountain and pool equipment requirements with our pool contractor, it has come to our attention that since the pool equipment will have a chlorinated filter system, by code, we are required to run that into the sanitary sewer. The fact that the fountain equipment is run with a non-chlorinated system, the pool contractor believes that the fountain equipment can be run into the existing storm sewer system in the fountain courtyard. Therefore we need Jordan and Skala to revise the plans accordingly.  
 Please reference landscape sheet 5C of 9 for pool equipment location.

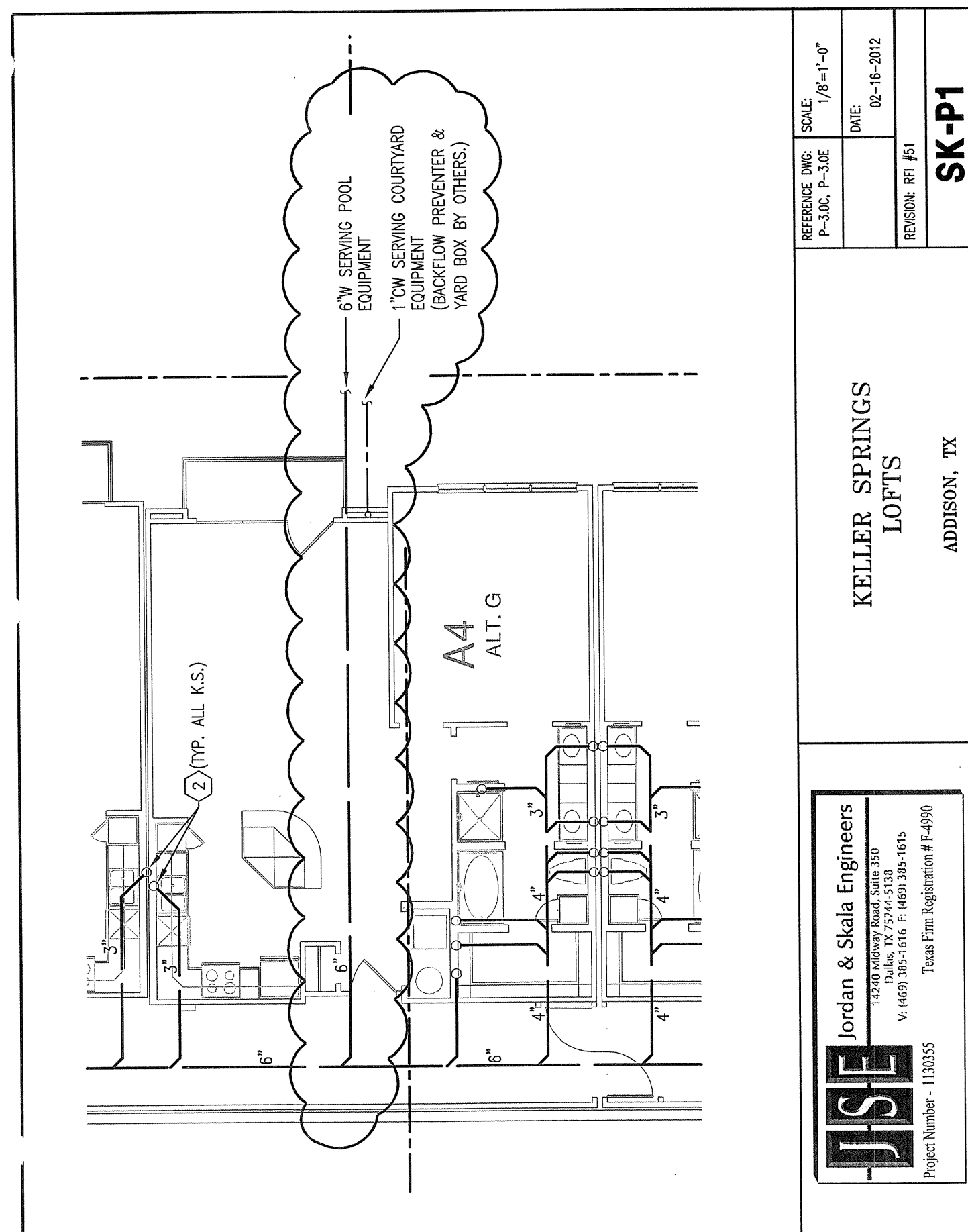
**Requested by:** Bryan Plickler  
 Embrey Partners, Ltd.

**Response:**  
 A 6" sanitary waste line has been routed to pool equipment area for pool drainage. See attached sketch.

Russell Cox

---

Answered by \_\_\_\_\_  
 Company \_\_\_\_\_ Date 2-16-2012



<b>KELLER SPRINGS LOFTS</b> ADDISON, TX	<b>SK-P1</b>
<b>JSE</b> Jordan & Skala Engineers 13200 W. Loop West, Suite 350 Dallas, TX 75244-3138 v: (469) 385-1616 f: (469) 385-1615 Texas Firm Registration # 1-4990 Project Number - 1130335	REFERENCE DWG: P-3.0C, P-3.0E SCALE: 1/8"=1'-0" DATE: 02-16-2012 REVISION: RT #51