



REVISIONS		
1	9-2-2011	DESIGN REVISIONS
2	9-13-2011	ANSI/FHA COMMENTS
3	9-23-2011	DESIGN REVISIONS
4	10-17-2011	CONSTRUCTION ISSUE
5	12-21-2011	DESIGN REVISIONS
6	1-17-2012	DESIGN REVISIONS
7	2-15-2012	TRANSFORMER REVISIONS
8	3-27-2012	CLUBHOUSE REVISIONS
9	4-17-2012	COORDINATION

KELLER SPRINGS LOFTS

LOFT APARTMENTS IN ADDISON, TEXAS

5-15-2012	COORDINATION
5-30-2012	SITE COORDINATION
11	COORDINATION



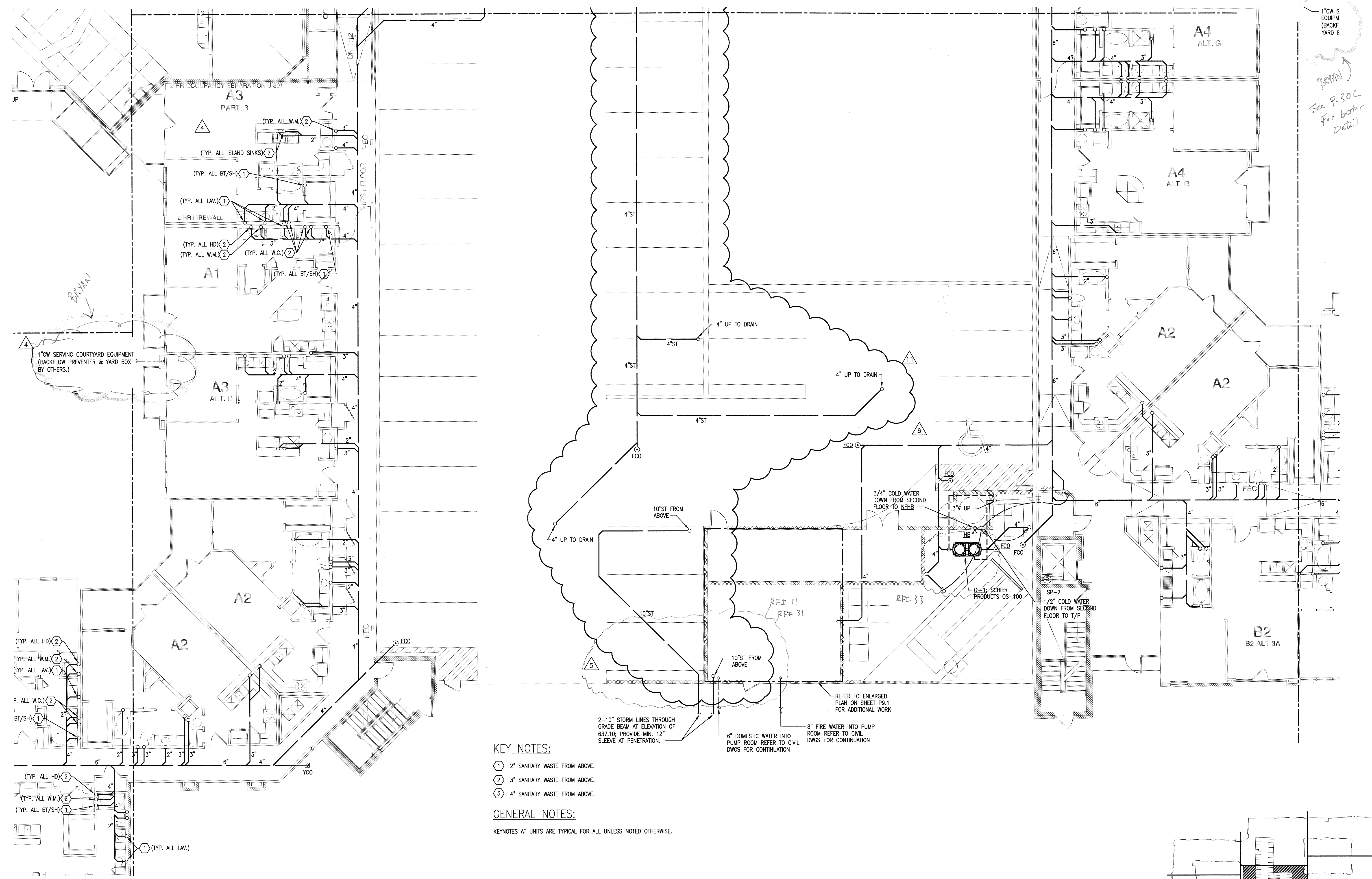
4144 N. Central Expy.
Suite 855
Dallas, TX 75204
214.520.8878
bgoarchitects.com

DATE
08-05-11

PROJECT
11129

SHEET NUMBER
P-3.0D

1" CW S EQUIP (BACKFL. YARD E)
BRYAN
See P-3.0C for better detail!



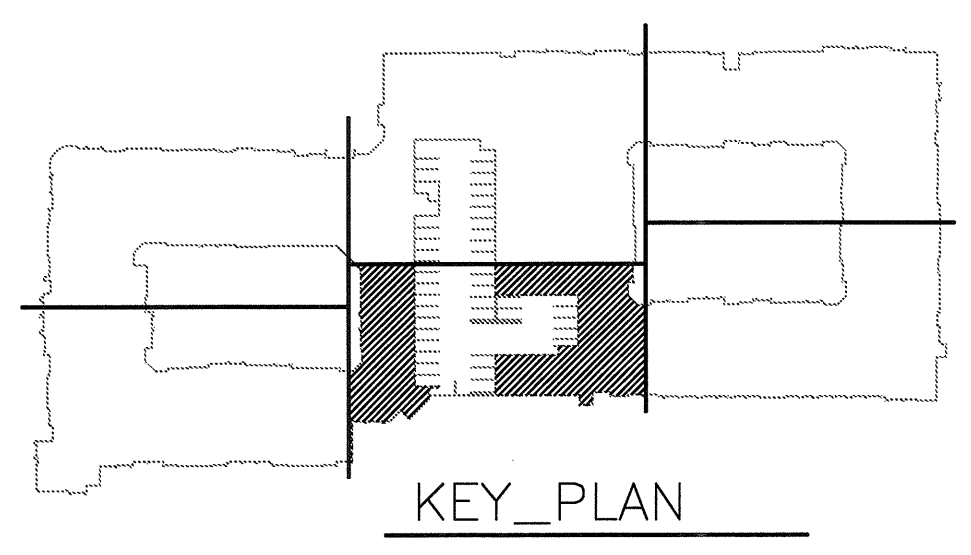
KEY NOTES:

- ① 2" SANITARY WASTE FROM ABOVE.
- ② 3" SANITARY WASTE FROM ABOVE.
- ③ 4" SANITARY WASTE FROM ABOVE.

GENERAL NOTES:

KEYNOTES AT UNITS ARE TYPICAL FOR ALL UNLESS NOTED OTHERWISE.

2-10" STORM LINES THROUGH GRADE BEAM AT ELEVATION OF 637.10; PROVIDE MIN. 12" SLEEVE AT PENETRATION.
 6" DOMESTIC WATER INTO PUMP ROOM REFER TO CIVIL DWGS FOR CONTINUATION
 8" FIRE WATER INTO PUMP ROOM REFER TO CIVIL DWGS FOR CONTINUATION
 REFER TO ENLARGED PLAN ON SHEET P-3.1 FOR ADDITIONAL WORK
 3/4" COLD WATER DOWN FROM SECOND FLOOR TO NEHB
 1/2" COLD WATER DOWN FROM SECOND FLOOR TO T/P



KEY_PLAN

1 DIVISION 'D' UNDERFLOOR PLAN
SCALE: 1/8" = 1'-0"

JSE Jordan & Skala Engineers
 17853 N. Dallas Parkway, Suite 370
 Dallas, TX 75238-6857
 V: 469-385-1616 Web: www.jordanaskala.com
 Project Number - 113-0355 Texas Firm Registration # F-4990
 Drawn By: CV Checked By: RC