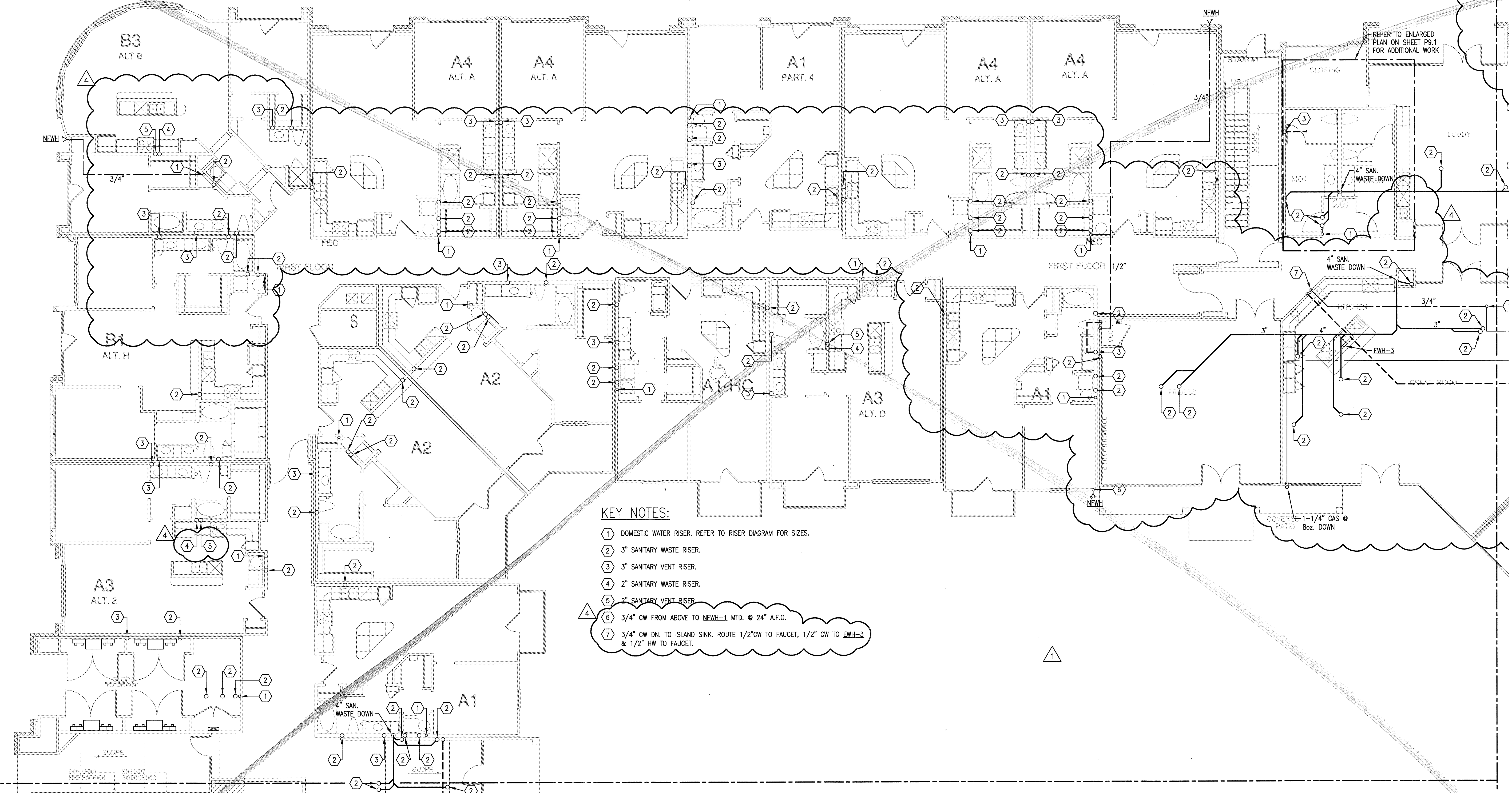


REVISIONS

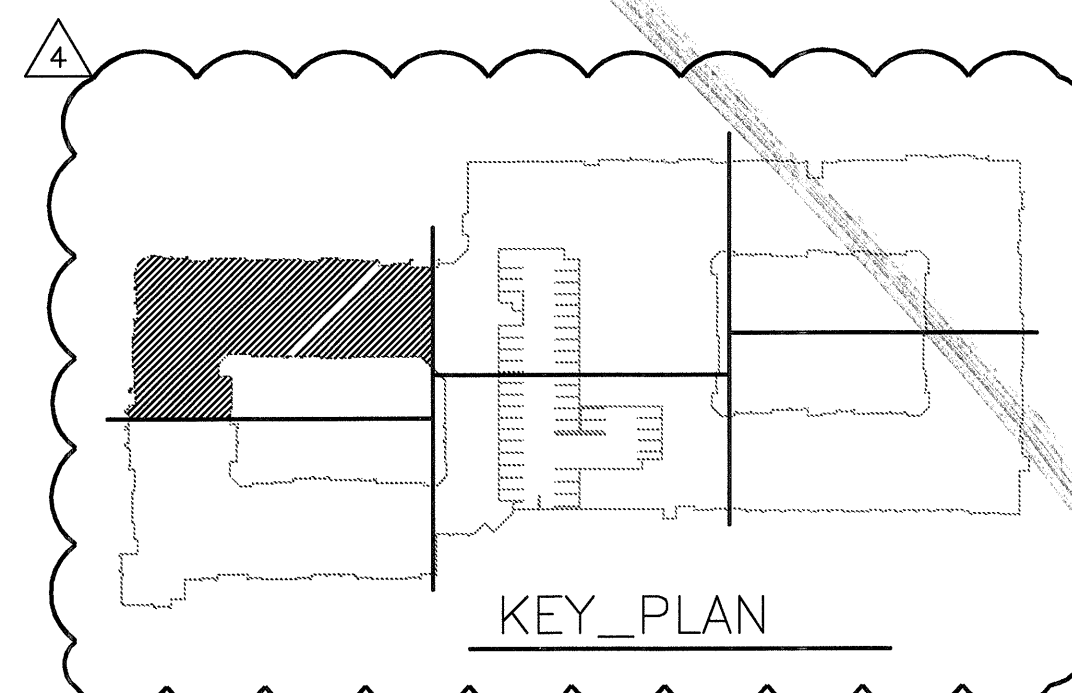
1	9-2-2011	DESIGN REVISIONS
2	9-13-2011	ANSI/FHA COMMENTS
3	9-23-2011	DESIGN REVISIONS
4	10-17-2011	CONSTRUCTION ISSUE

KELLER SPRINGS LOFTS

LOFT APARTMENTS IN ADDISON, TEXAS



- KEY NOTES:**
- 1 DOMESTIC WATER RISER. REFER TO RISER DIAGRAM FOR SIZES.
 - 2 3" SANITARY WASTE RISER.
 - 3 3" SANITARY VENT RISER.
 - 4 2" SANITARY WASTE RISER.
 - 5 2" SANITARY VENT RISER.
 - 6 3/4" CW FROM ABOVE TO NEWH-1 MTD. @ 24" A.F.G.
 - 7 3/4" CW DN. TO ISLAND SINK. ROUTE 1/2" CW TO FAUCET, 1/2" CW TO EWH-3 & 1/2" HW TO FAUCET.



1 DIVISION 'A' FIRST FLOOR PLAN
SCALE: 1/8" = 1'-0"

JSE Jordan & Skala Engineers
 14240 Midway Road, Suite 350
 Dallas, TX 75244-5138
 V: (469) 383-1616 F: (469) 383-1615
 Project Number - 113-0355 Texas Firm Registration # F-4990
 Drawn By: CV Checked By: RC

BGO architects
 4144 N. Central Expy.
 Suite 855
 Dallas, TX 75204
 214.520.8878
 bgoarchitects.com

DATE	08-05-11
PROJECT	11129
SHEET NUMBER	P-3.1A