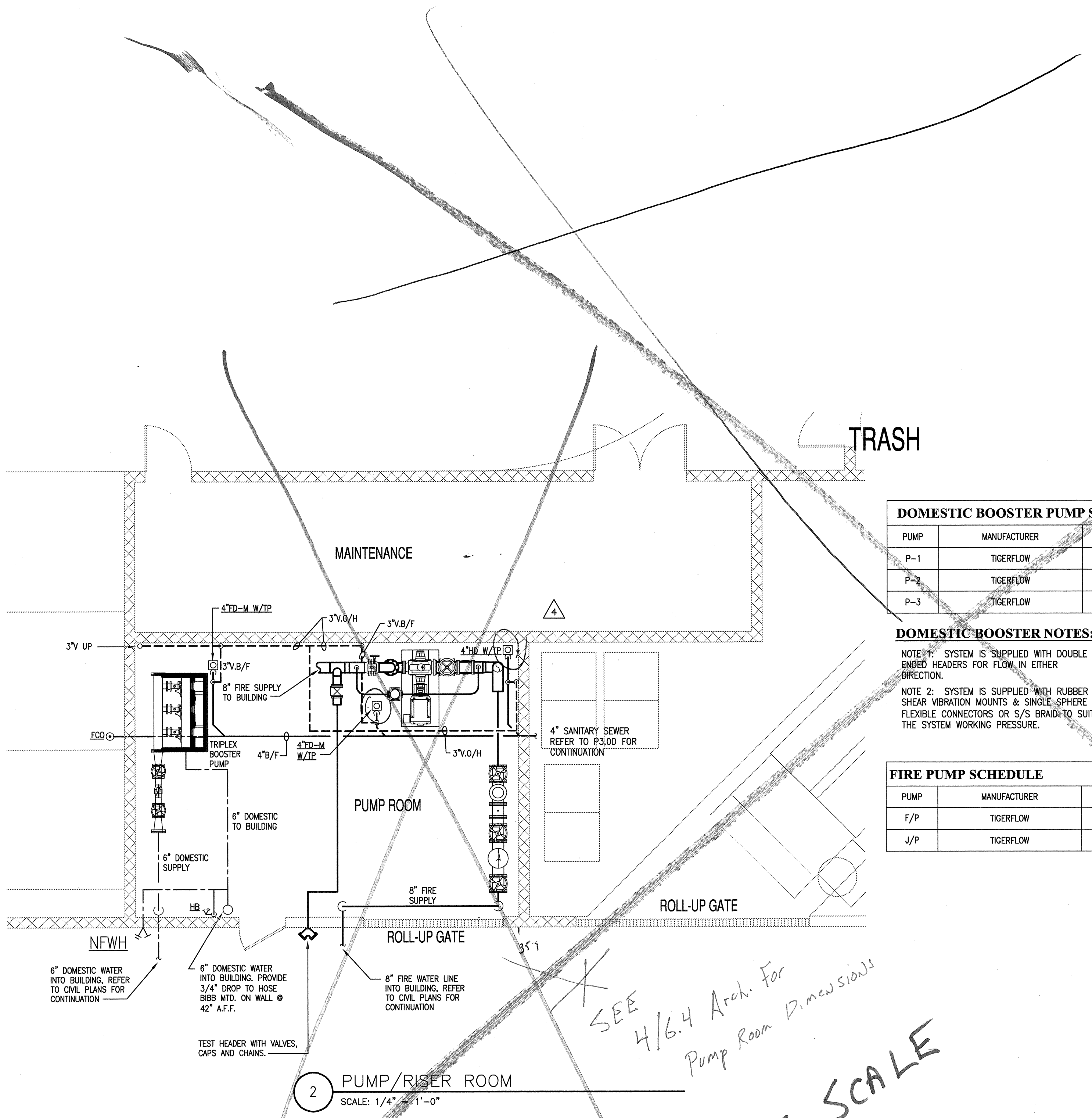


REVISIONS

1	9-2-2011	DESIGN REVISIONS
2	9-13-2011	ANSI/FHA COMMENTS
3	9-23-2011	DESIGN REVISIONS
4	10-17-2011	CONSTRUCTION ISSUE
5	12-21-2011	DESIGN REVISIONS
6	1-17-2012	DESIGN REVISIONS

**KELLER SPRINGS LOFTS**  
 LOFT APARTMENTS IN ADDISON, TEXAS



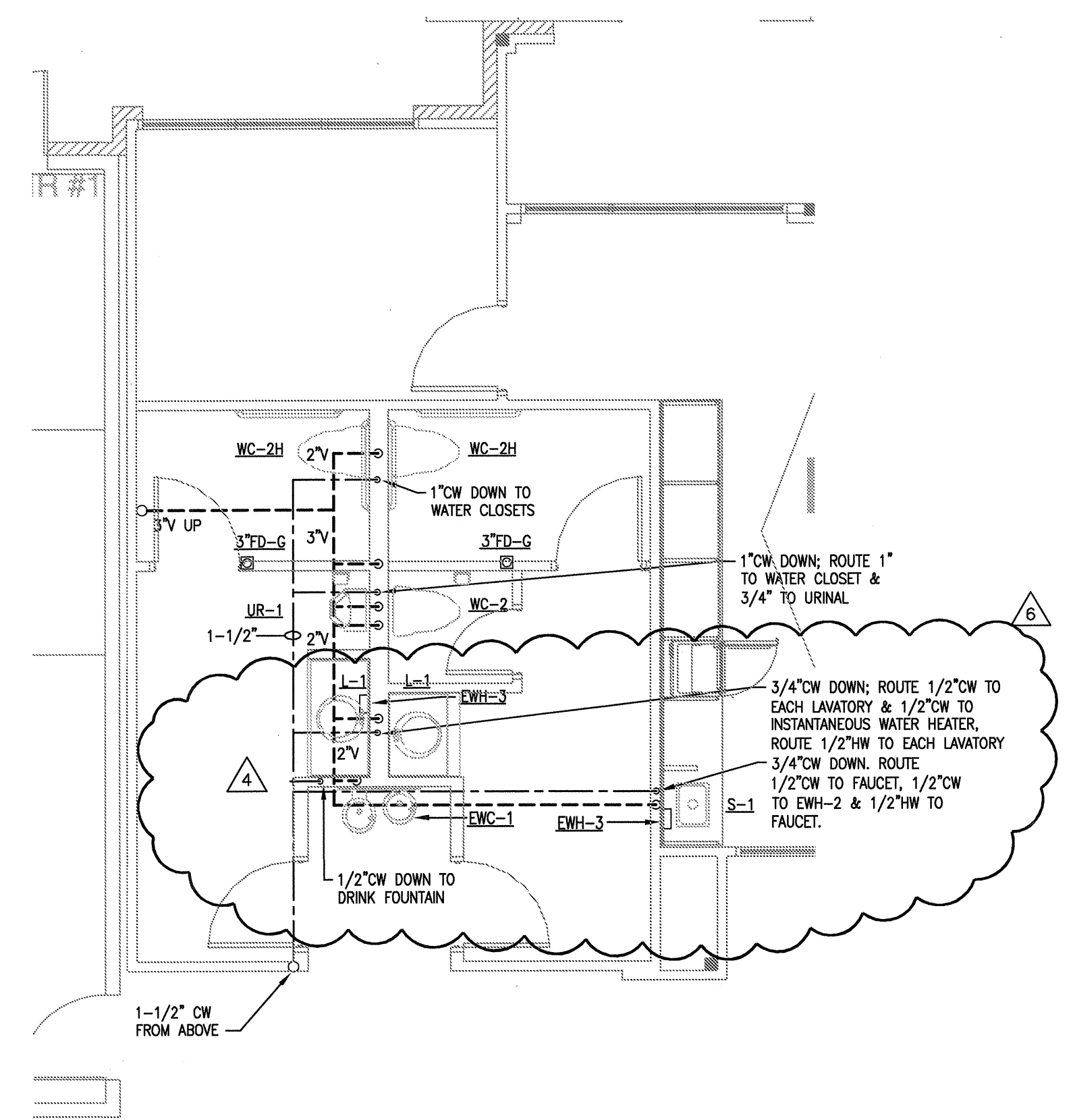
**DOMESTIC BOOSTER PUMP SCHEDULE**

PUMP	MANUFACTURER	MODEL NO.	GPM	HEAD	HP	SPEED	POWER
P-1	TIGERFLOW	--	187	92'	7.5	3500	208-60-3
P-2	TIGERFLOW	--	187	92'	7.5	3500	208-60-3
P-3	TIGERFLOW	--	187	92'	7.5	3500	208-60-3

**DOMESTIC BOOSTER NOTES:**  
 NOTE 1: SYSTEM IS SUPPLIED WITH DOUBLE ENDED HEADERS FOR FLOW IN EITHER DIRECTION.  
 NOTE 2: SYSTEM IS SUPPLIED WITH RUBBER IN SHEAR VIBRATION MOUNTS & SINGLE SPHERE FLEXIBLE CONNECTORS OR S/S BRAID TO SUIT THE SYSTEM WORKING PRESSURE.

**FIRE PUMP SCHEDULE**

PUMP	MANUFACTURER	MODEL NO.	GPM	HEAD	HP	SPEED	POWER
F/P	TIGERFLOW	--	1000	207'	100	1750 MAX	208-60-3
J/P	TIGERFLOW	--	12	207'	1.5	3500	208-60-3



1 CLUBHOUSE RESTROOM  
 SCALE: 1/4" = 1'-0"

2 PUMP/RISER ROOM  
 SCALE: 1/4" = 1'-0"

*WRONG = 21'-9" x 15'-6"  
 Correct = 24'-8" x 17'-10"*

*SEE 4/6.4 Arch. For Pump Room Dimensions  
 NOT TO SCALE*