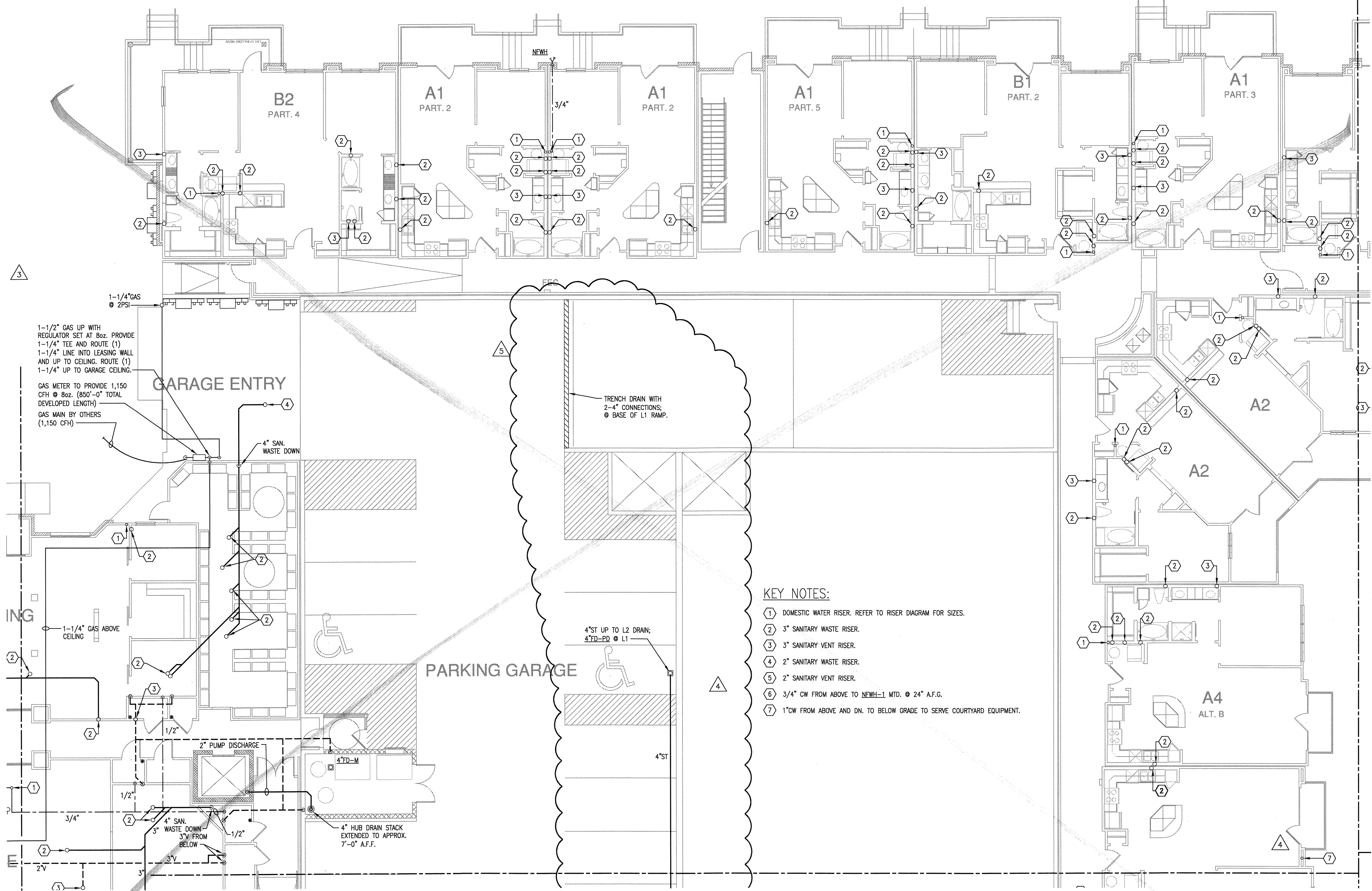
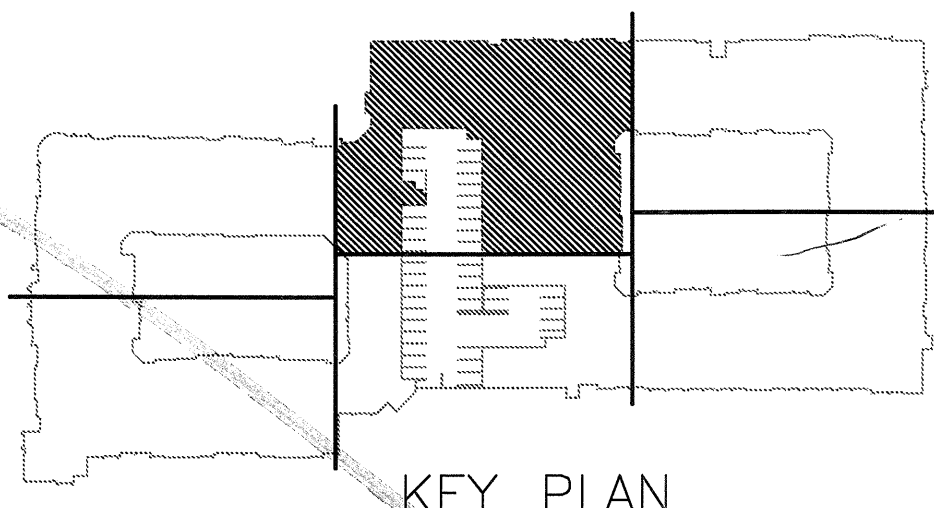


REVISIONS		
△	9-2-2011	DESIGN REVISIONS
△	9-13-2011	ANSI/FHA COMMENTS
△	9-23-2011	DESIGN REVISIONS
△	10-17-2011	CONSTRUCTION ISSUE
△	12-21-2011	DESIGN REVISIONS

KELLER SPRINGS LOFTS
 LOFT APARTMENTS IN ADDISON, TEXAS



- KEY NOTES:**
- ① DOMESTIC WATER RISER. REFER TO RISER DIAGRAM FOR SIZES.
 - ② 3" SANITARY WASTE RISER.
 - ③ 3" SANITARY VENT RISER.
 - ④ 2" SANITARY WASTE RISER.
 - ⑤ 2" SANITARY VENT RISER.
 - ⑥ 3/4" CW FROM ABOVE TO NEWH-1 MTD. @ 24" A.F.G.
 - ⑦ 1" CW FROM ABOVE AND DN. TO BELOW GRADE TO SERVE COURTYARD EQUIPMENT.



1 DIVISION 'C' FIRST FLOOR PLAN
 SCALE: 1/8" = 1'-0"

JSE Jordan & Skala Engineers
 14240 Midway Road, Suite 310
 Dallas, TX 75244-5138
 Project Number - 113-0355 Texas Firm Registration # F-4990
 Drawn By: CV Checked By: RC

BGO architects
 4144 N. Central Expy.
 Suite 855
 Dallas, TX 75204
 214.520.8878
 bgearchitects.com

DATE
 08-05-11

PROJECT
 11129

SHEET NUMBER

P-3.1C