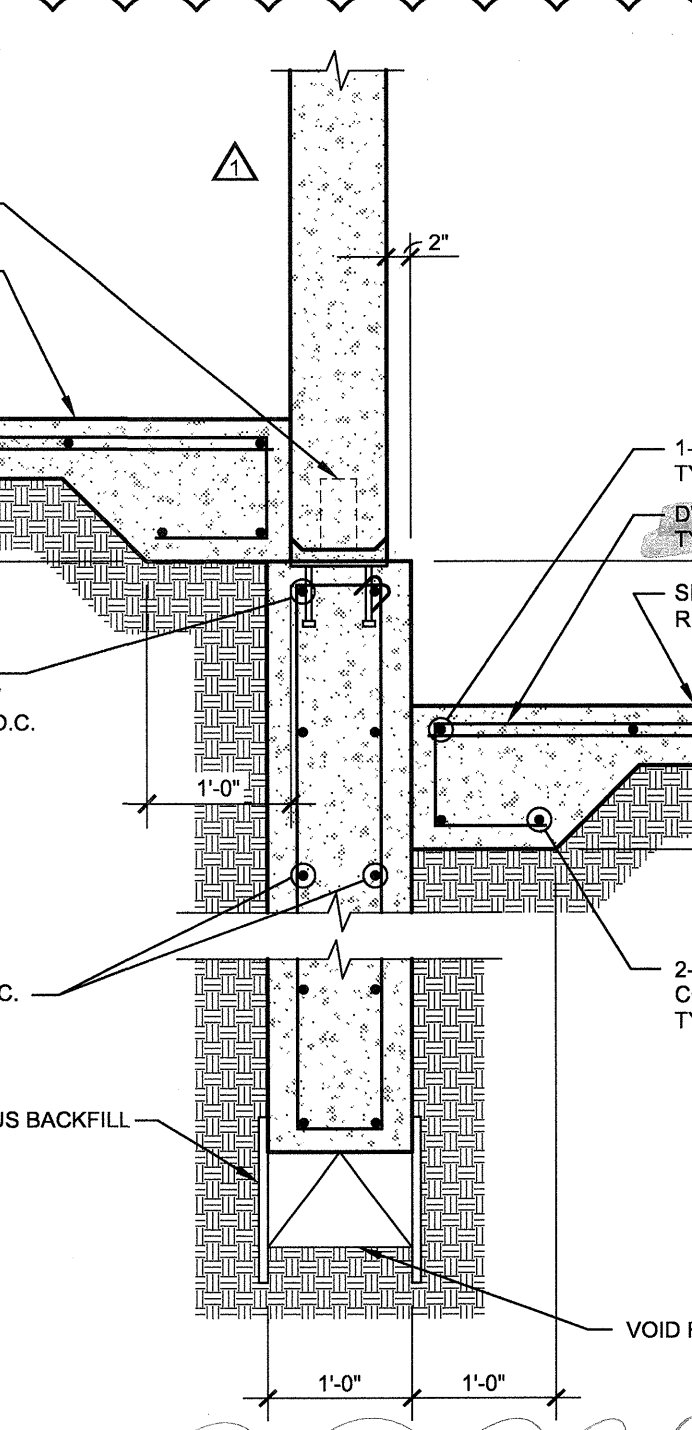


**DOWEL SCHEDULE**

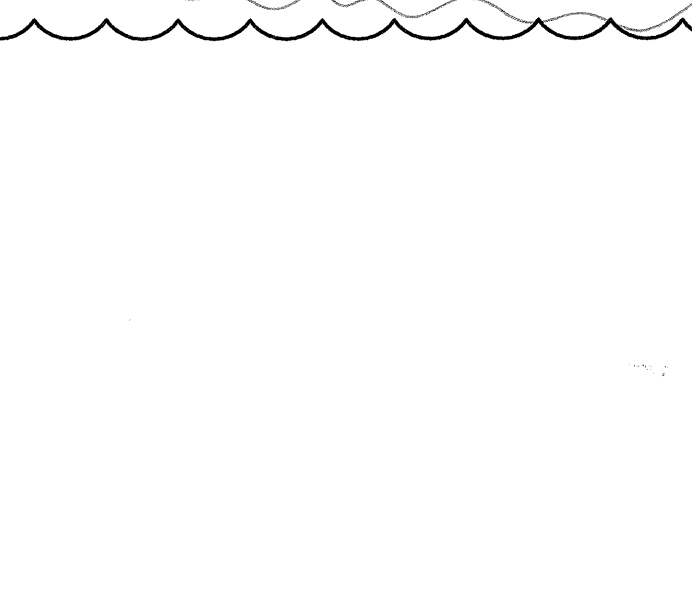
MARK	SIZE	A	B	C
DWL. A	#4	2'-0"	1'-0"	-
DWL. B	#5	2'-0"	0'-8"	-
DWL. C	#3	1'-0"	1'-0"	-
DWL. D	#3	2'-0"	0'-8"	-
DWL. E	#4	2'-0"	AS REQ'D	-
DWL. F	#4	2'-0"	0'-8"	-
DWL. G	#4	2'-0"	0'-8"	0'-8"

NOTES:  
 1. SCHEDULED DOWELS ARE MARKED "DWL." ON THE SECTIONS AND DETAILS.  
 2. DOWEL SPACING TO BE THE SAME AS VERTICAL BEAM OR WALL REINFORCEMENT, UNLESS NOTED OTHERWISE.  
 3. STRAIGHT BARS SHALL BE PLACED WITH ONE HALF OF BAR LENGTH ON EACH SIDE OF COLD JOINT, UNLESS NOTED OTHERWISE.

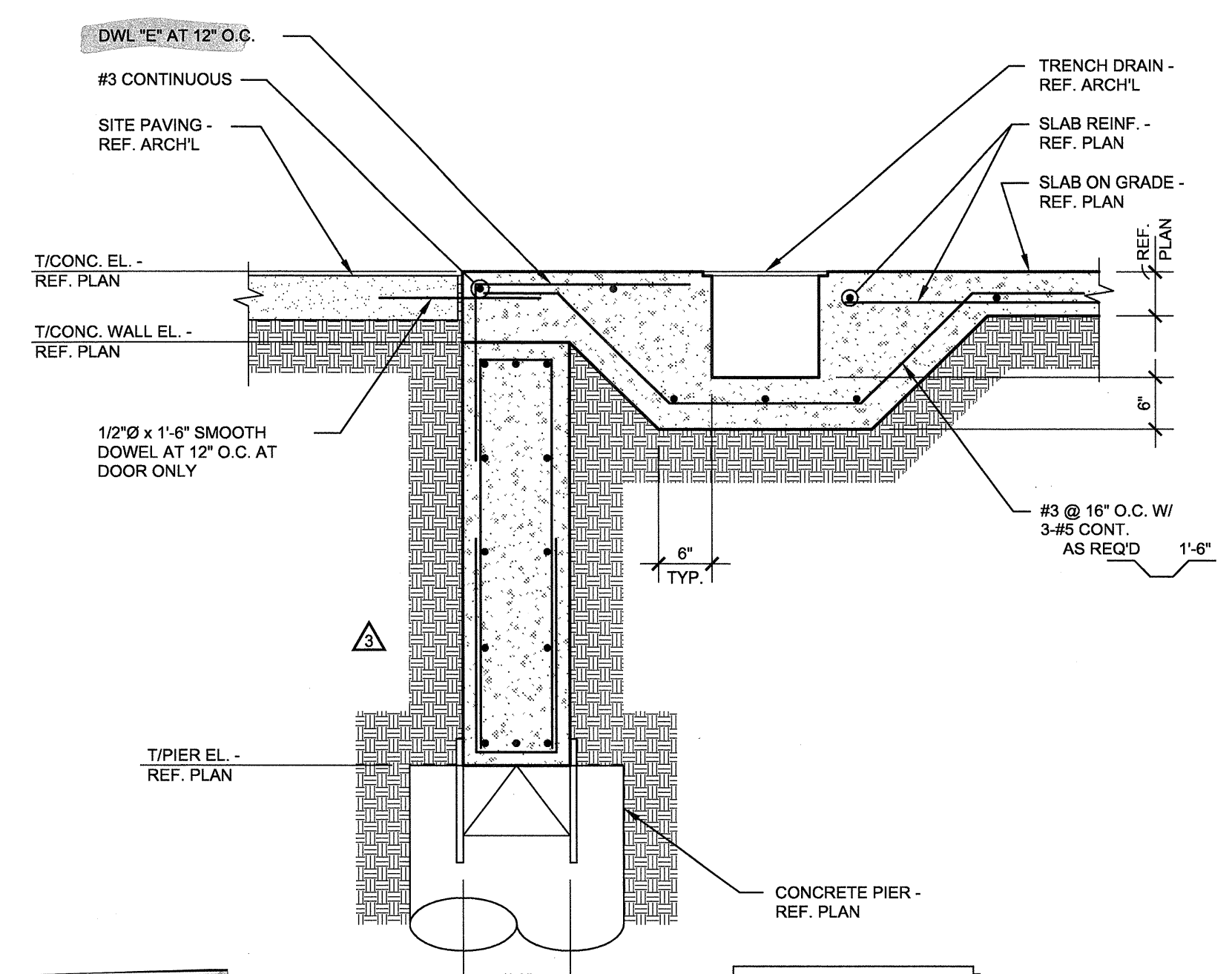
SCHEDULE NO SCALE



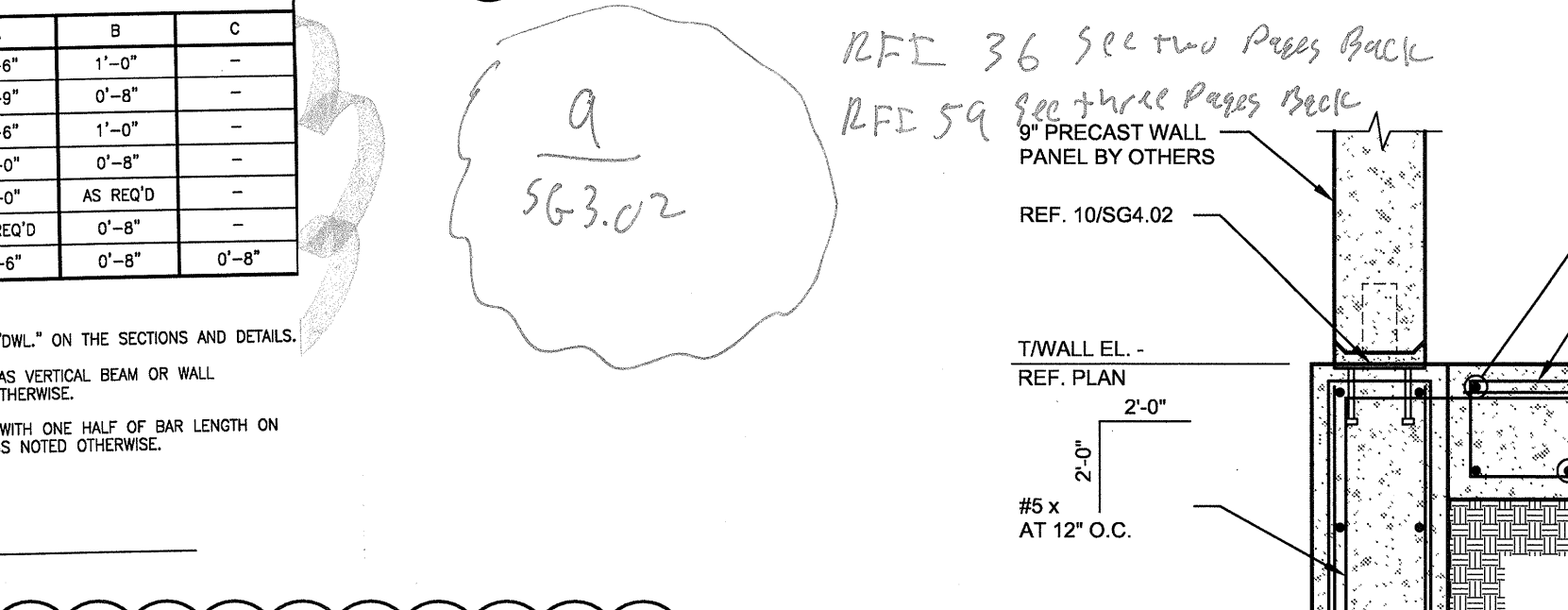
SECTION 7 NO SCALE



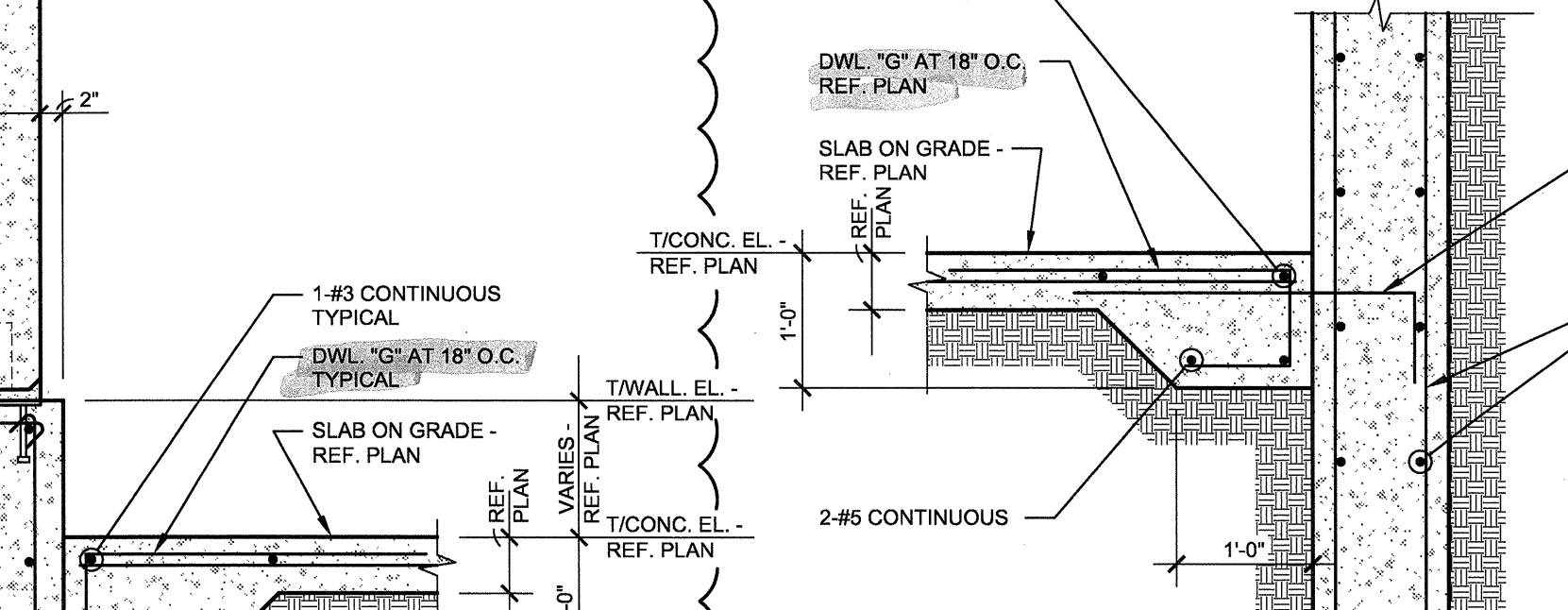
SECTION 8 NO SCALE



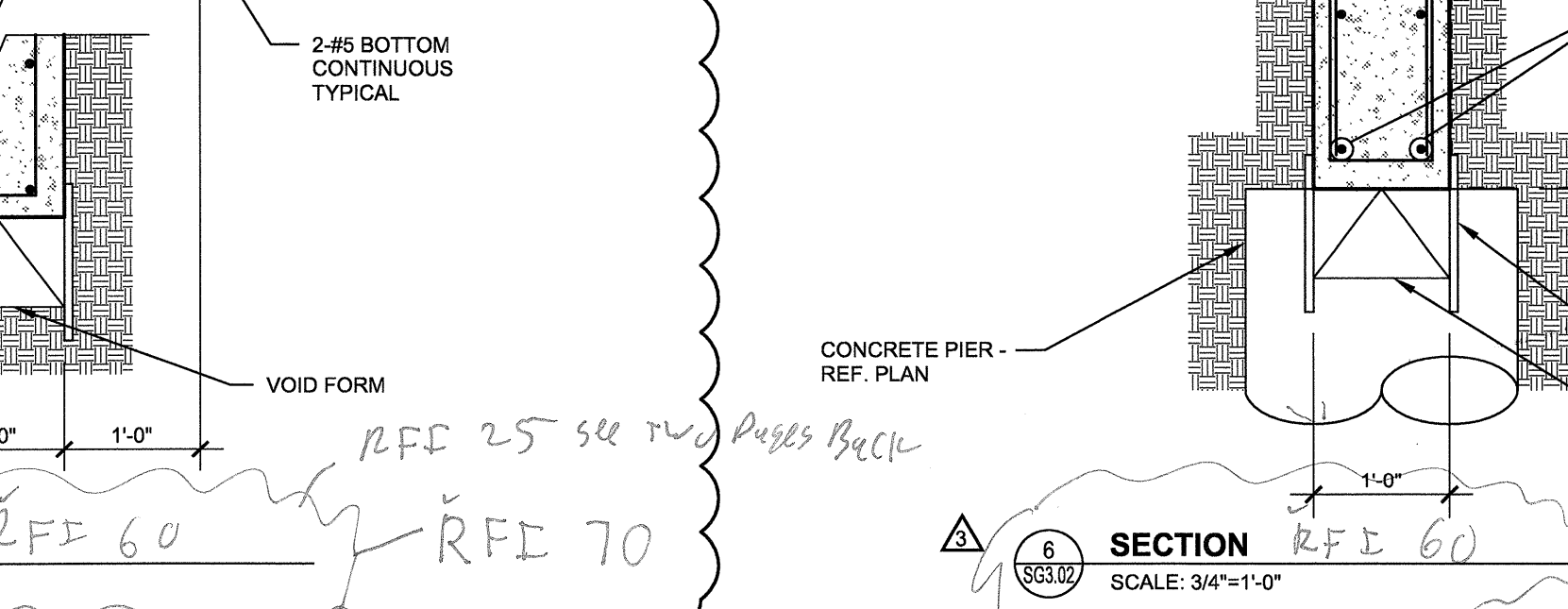
SECTION 9 SCALE: 3/4\"/>



SECTION 10 SCALE: 3/4\"/>



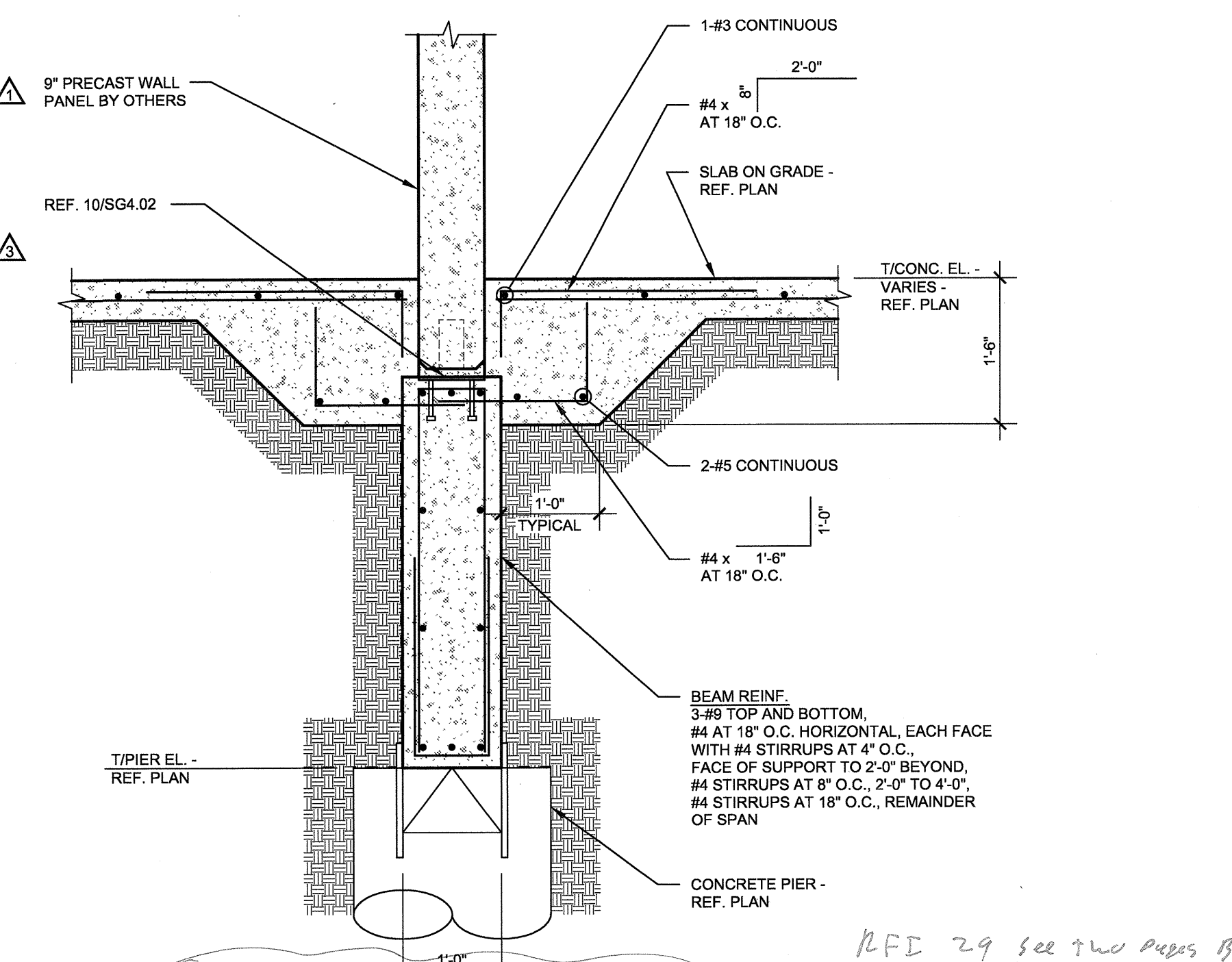
SECTION 11 SCALE: 3/4\"/>



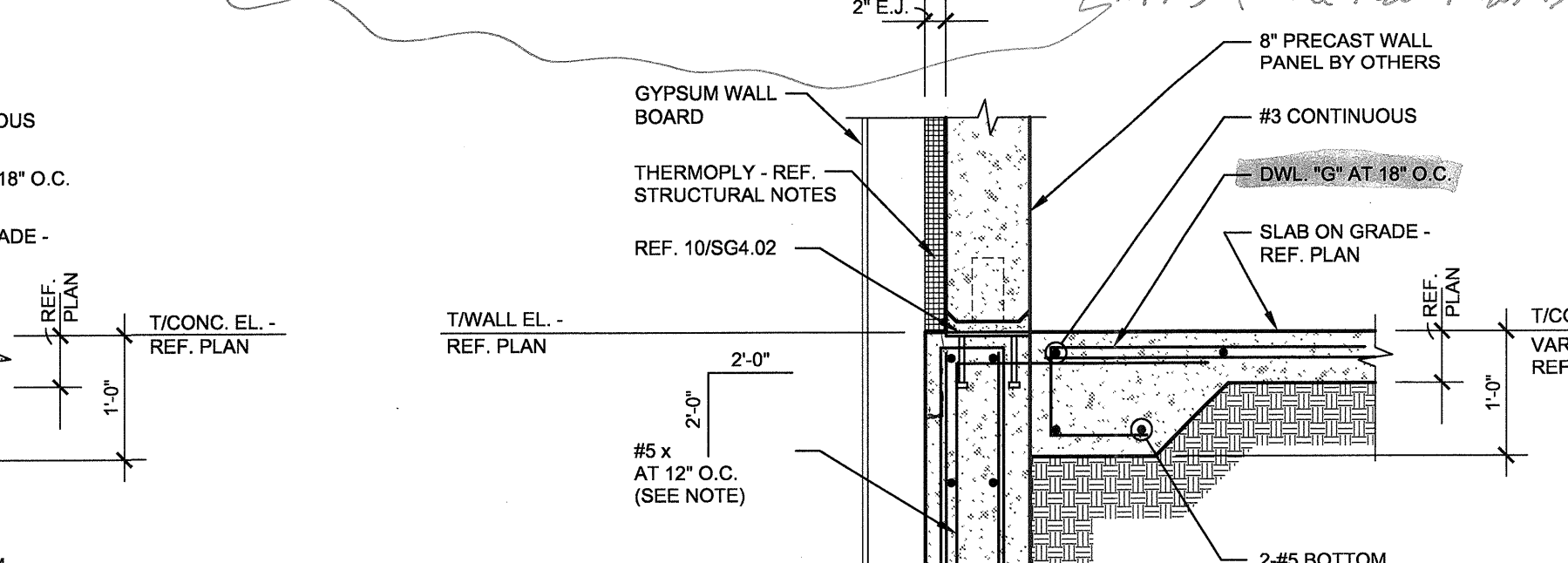
SECTION 12 SCALE: 3/4\"/>



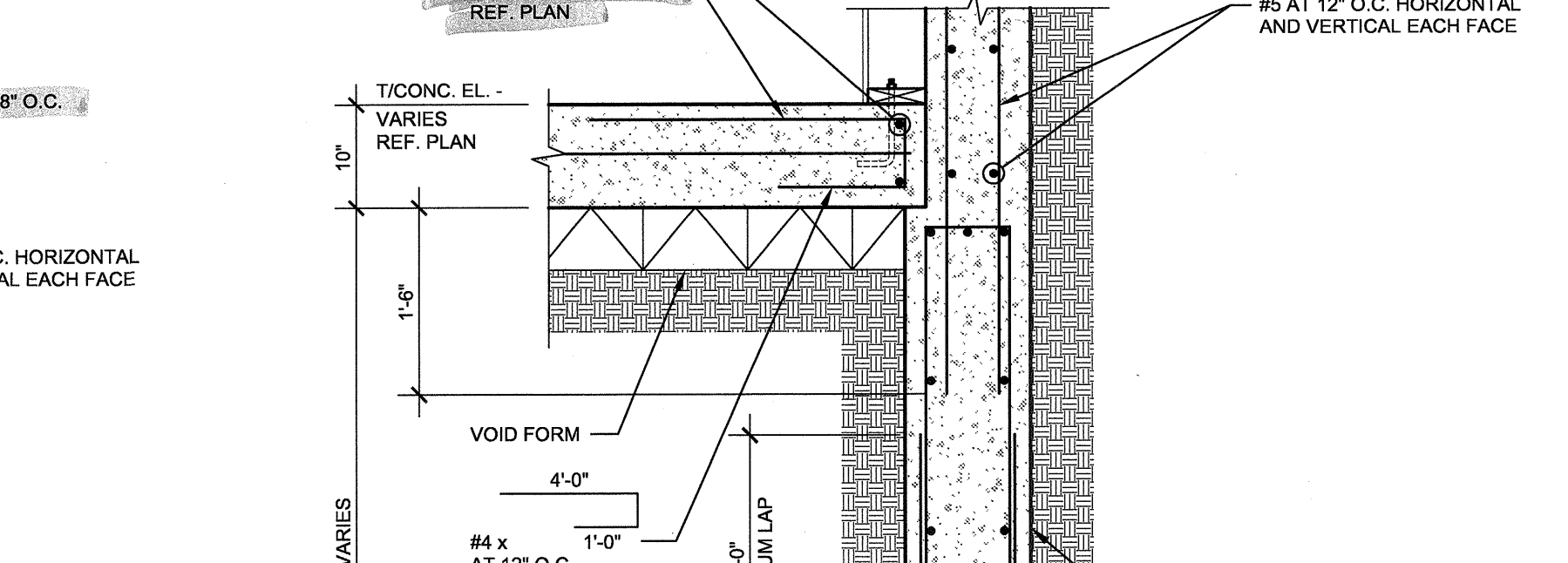
SECTION 13 SCALE: 3/4\"/>



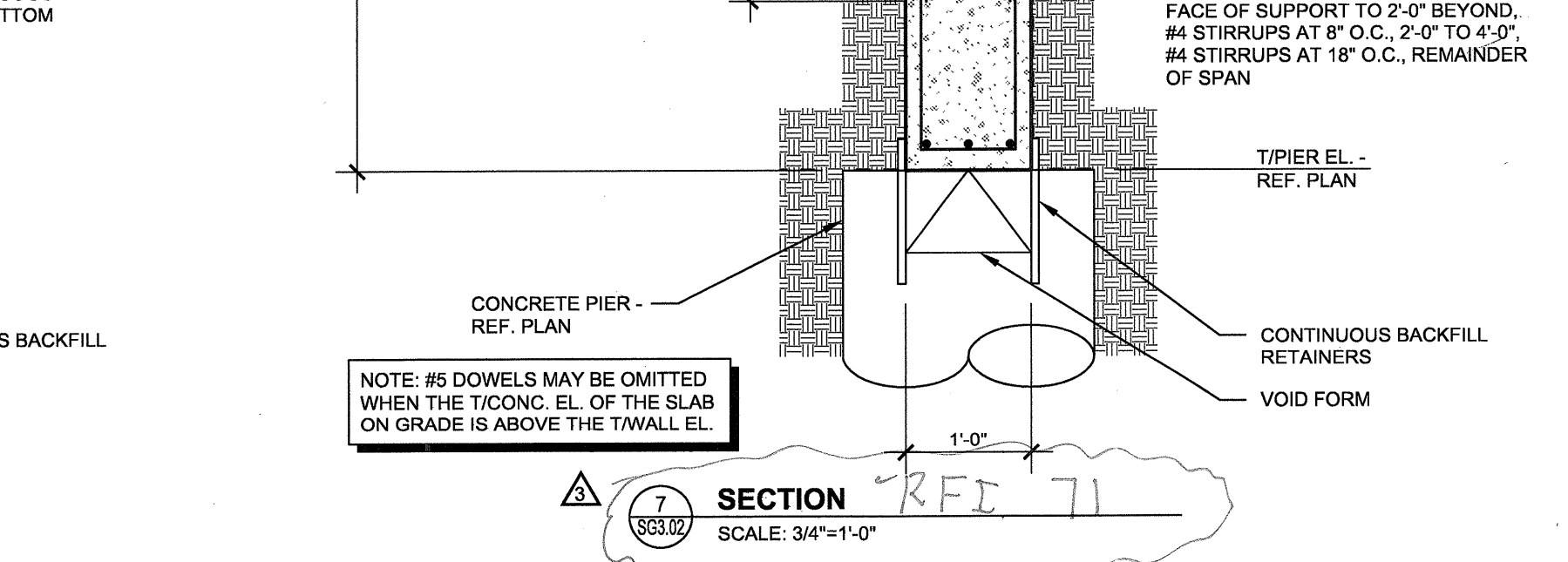
SECTION 14 SCALE: 3/4\"/>



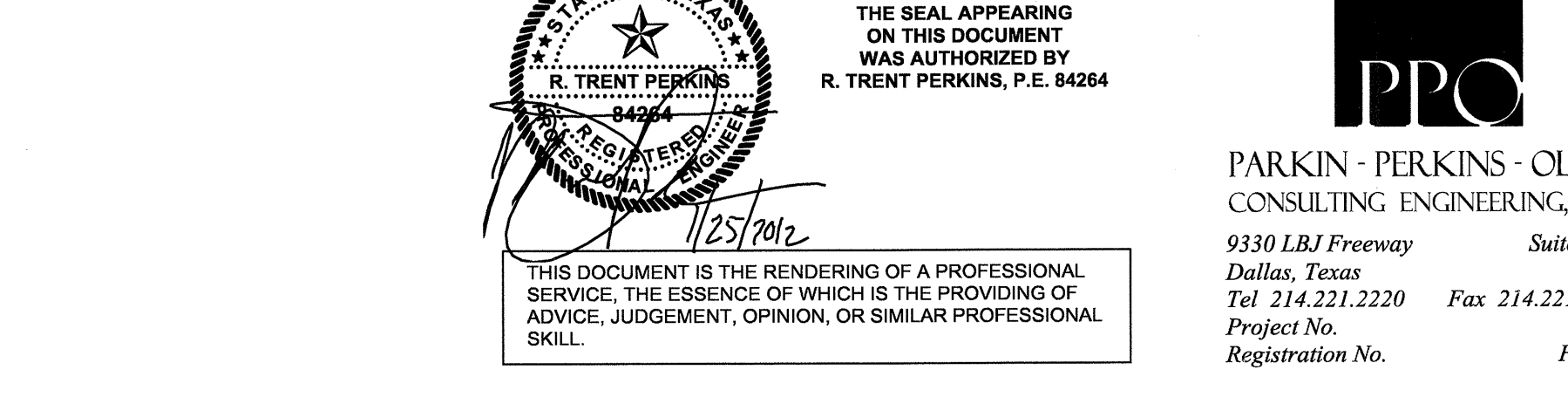
SECTION 15 SCALE: 3/4\"/>



SECTION 16 SCALE: 3/4\"/>



SECTION 17 SCALE: 3/4\"/>



SECTION 18 SCALE: 3/4\"/>

**REVISIONS**

PRECAST SUBMITTAL COORDINATION	10/17/11
SLAB ON VOID FOUNDATION	11/18/11
PRECAST SUBMITTAL COORDINATION	01/04/12
COORDINATION	01/25/12

**KELLER SPRINGS LOFTS**  
 LOFT APARTMENTS IN ADDISON, TEXAS

CONSTRUCTION ISSUE  
 10-17-2011

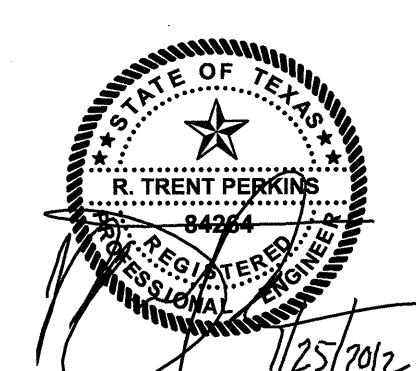
**BGO** architects  
 4144 N. Central Expy., Suite 855  
 Dallas, TX 75204  
 214.520.8878  
 bgoarchitects.com

DATE  
 08-05-2011

PROJECT  
 11129

SHEET NUMBER

**SG3.02**



THE SEAL APPEARING ON THIS DOCUMENT WAS AUTHORIZED BY R. TRENT PERKINS, P.E. #4264

**PRO**  
 PARKIN - PERKINS - OLSEN  
 CONSULTING ENGINEERING, INC.  
 9330 LBJ Freeway Suite 1055  
 Dallas, Texas 75243  
 Tel 214.221.2220 Fax 214.221.2252  
 Project No. 39155  
 Registration No. F-1479

THIS DOCUMENT IS THE RENDERING OF A PROFESSIONAL SERVICE, THE ESSENCE OF WHICH IS THE PROVIDING OF ADVICE, JUDGEMENT, OPINION, OR SIMILAR PROFESSIONAL SKILL.

RFI 36 see two pages back  
 RFI 59 see three pages back  
 a  
 SG3.02

RFI 25 see two pages back  
 RFI 70  
 RFI 28 see three pages back

RFI 29 see two pages back  
 RFI 49 see three pages back  
 RFI 54 see two pages back

RFI 22  
 RFI 26 see two pages back  
 RFI 60  
 RFI 105

see three pages back  
 RFI 60  
 RFI 25 see two pages back

RFI 28