

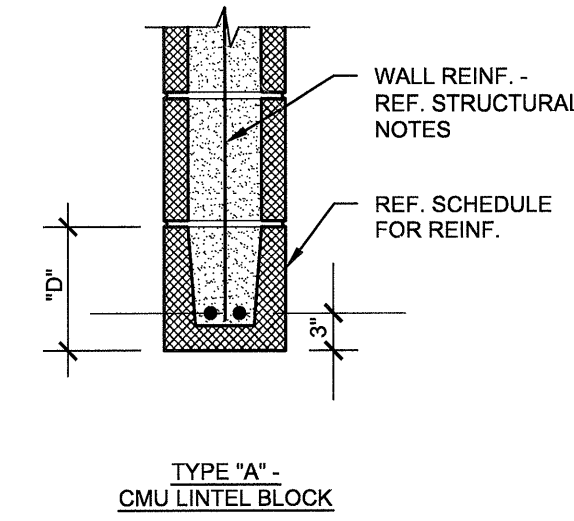
CONCRETE DOWEL SCHEDULE				
MARK	SIZE	A	B	C
DWL. A	#4	2'-6"	1'-0"	-
DWL. B	#5	2'-9"	0'-8"	-
DWL. C	#3	2'-0"	2'-0"	-
DWL. D	#5	2'-0"	1'-0"	-
DWL. E	#4	2'-0"	AS REQ'D	-
DWL. F	#4	AS REQ'D	0'-8"	-
DWL. G	#4	2'-6"	0'-8"	0'-8"

- NOTES:
- SCHEDULED DOWELS ARE MARKED "DWL." ON THE SECTIONS AND DETAILS.
 - DOWEL SPACING TO BE THE SAME AS VERTICAL BEAM OR WALL REINFORCEMENT, UNLESS NOTED OTHERWISE.
 - STRAIGHT BARS SHALL BE PLACED WITH ONE HALF OF BAR LENGTH ON EACH SIDE OF COLD JOINT, UNLESS NOTED OTHERWISE.

1 SCHEDULE
NO SCALE

CONCRETE REINFORCING LAP SPLICE SCHEDULE	
BAR SIZE	LAP
3	1'-6"
4	2'-0"
5	2'-6"
6	3'-0"
7	4'-2"
8	4'-8"
9	5'-4"
10	6'-0"
11	6'-8"

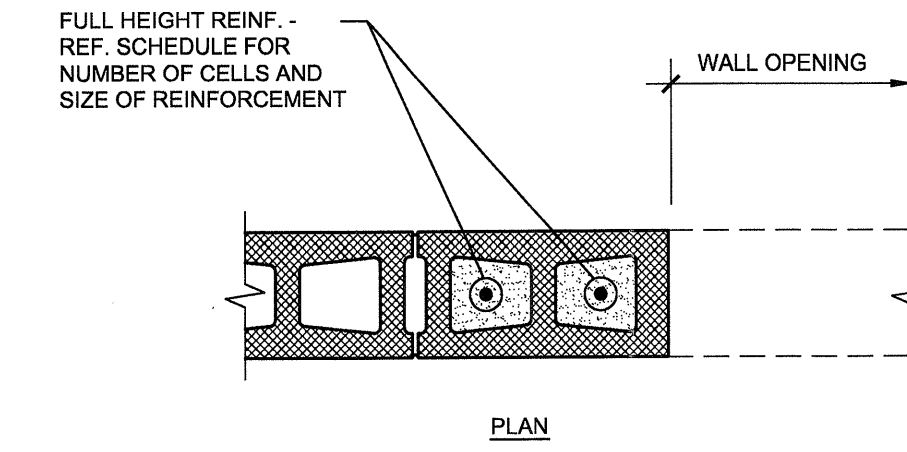
2 SCHEDULE
NO SCALE



CONCRETE MASONRY LINTEL SCHEDULE				
MARK	TYPE	DEPTH, "D"	REINF.	MAXIMUM OPENING
TYPICAL, U.N.O.	A	8"	2-#4 CONT.	4'-0"
TYPICAL, U.N.O.	A	16"	2-#5 CONT.	8'-0"

- NOTES:
- EXTEND BEAMS 8" BEYOND FACE OF OPENING.
 - VERTICAL CELLS ADJACENT TO OPENINGS SHALL BE REINFORCED PER TYP. WALL REINF. AND GROUTED SOLID - REF. STRUCTURAL NOTES.

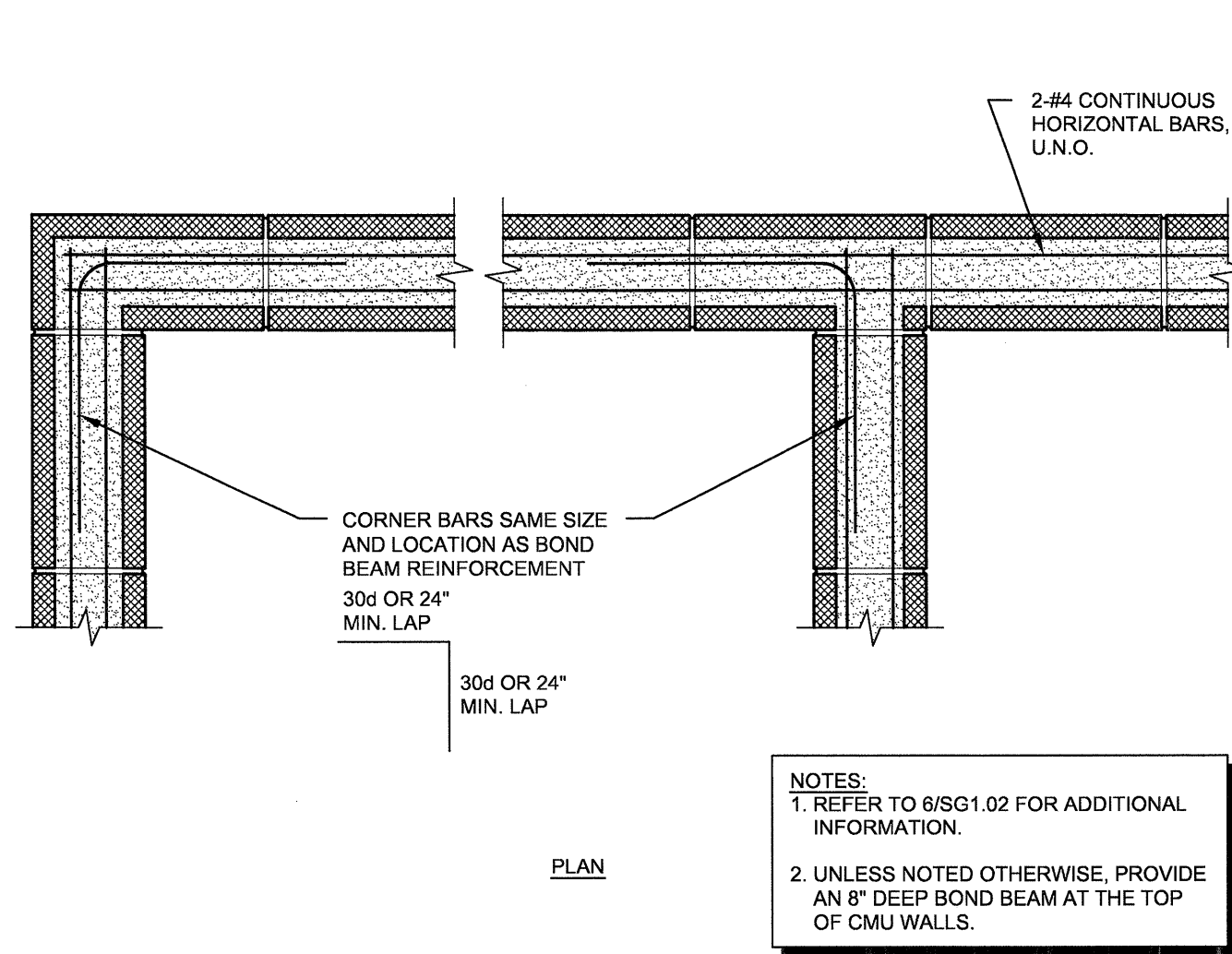
3 TYPICAL CMU LINTEL SCHEDULE
NO SCALE



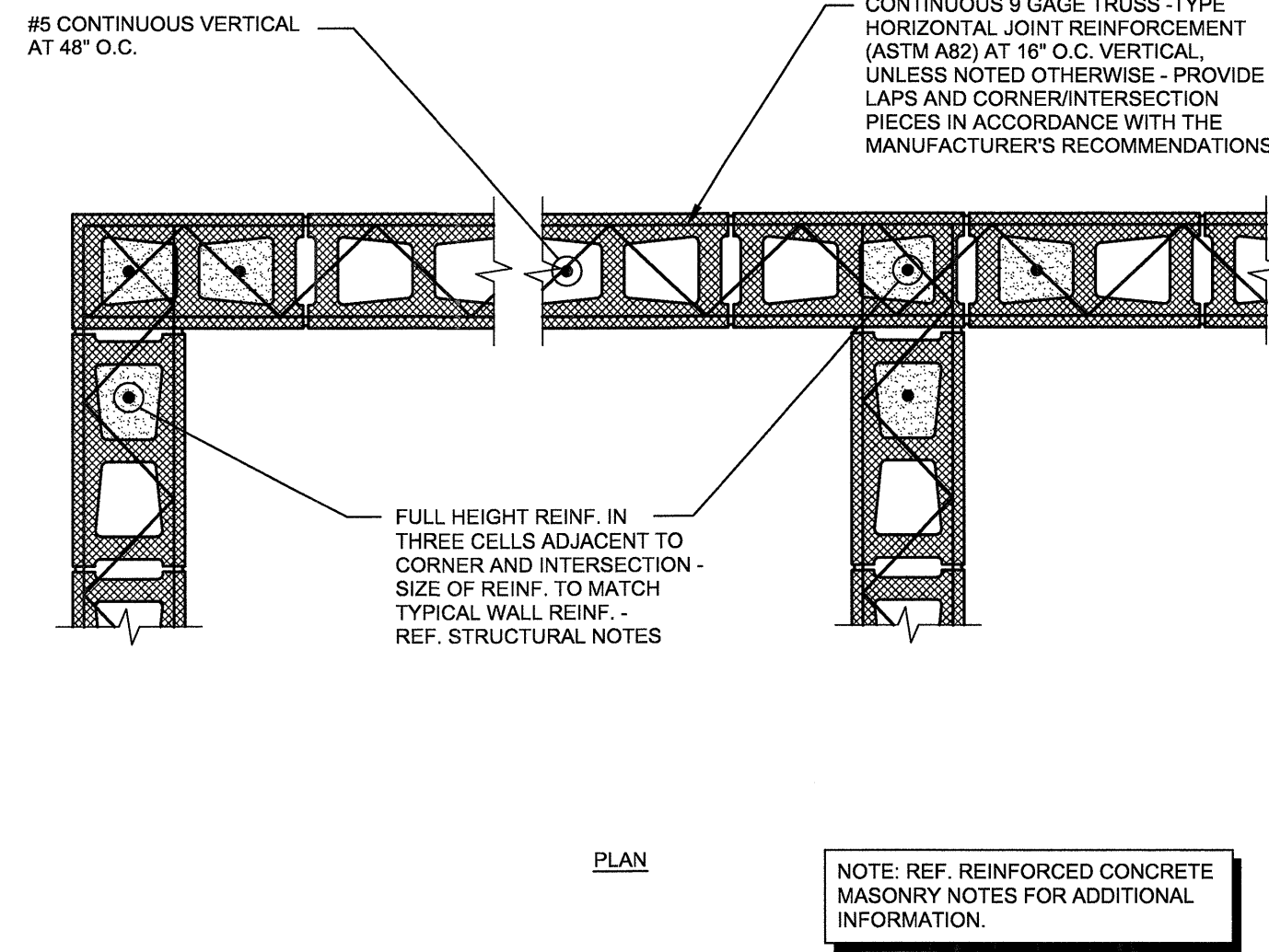
OPENING WIDTH	CMU JAMB			
	EXTERIOR		INTERIOR	
	NUMBER OF GROUTED CELLS	REINF./CELL	NUMBER OF GROUTED CELLS	REINF./CELL
≤ 4'-0"	2	1-#5	2	1-#5
≤ 8'-0"	3	1-#5	2	1-#5
≤ 12'-0"	3	1-#6	2	1-#5

- NOTES:
- HORIZONTAL REINFORCEMENT OMITTED FOR CLARITY. REFER TO 6/SG1.02 FOR ADDITIONAL INFORMATION.
 - AT STORM SHELTERS, USE FOUR (4) GROUTED CELLS WITH 2-#6 BARS (1 EACH FACE) IN EACH CELL (4'-0" OPENING MAX.).

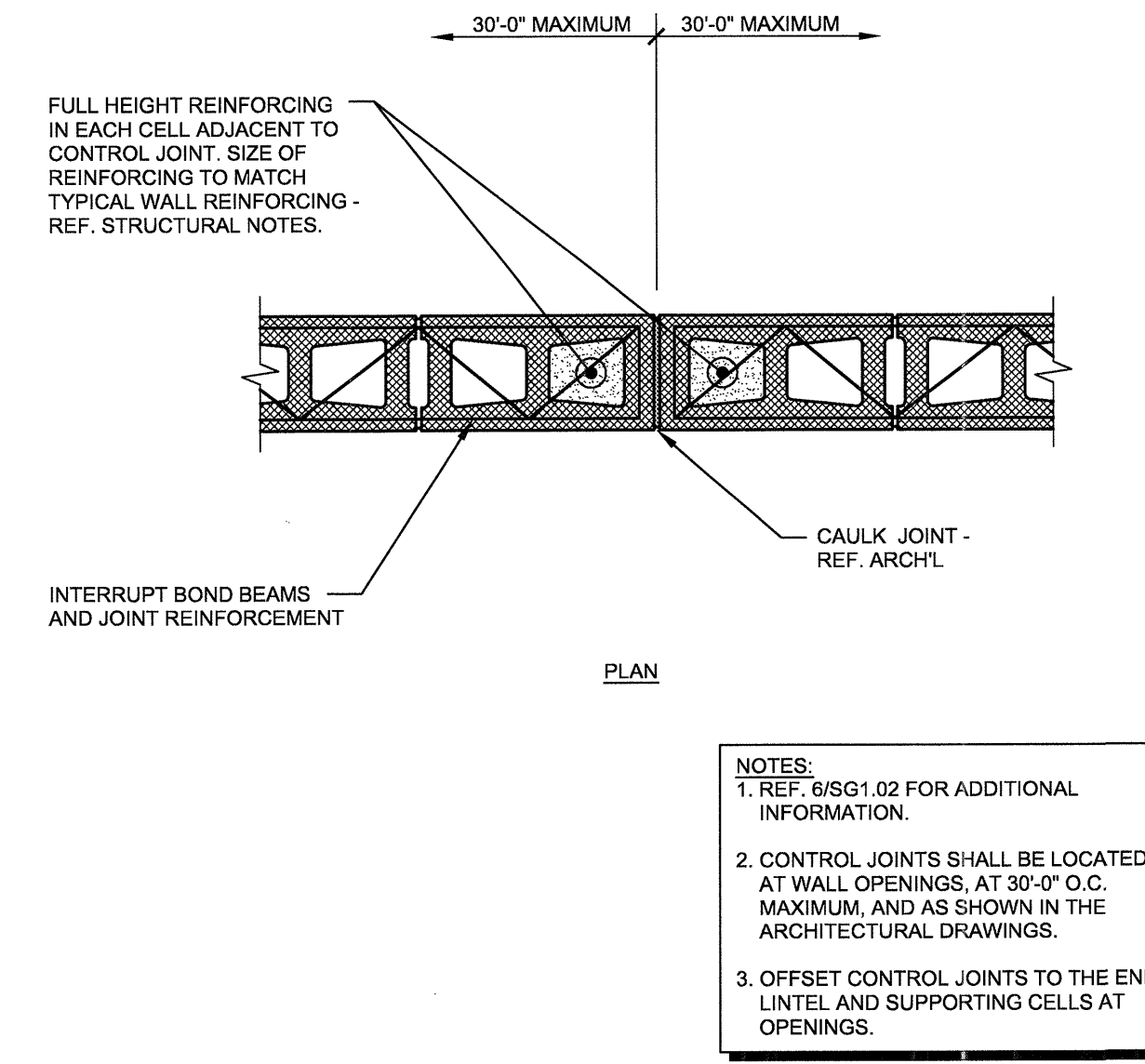
4 TYPICAL CMU JAMB SCHEDULE
NO SCALE



5 TYPICAL CMU WALL BOND BEAM REINFORCEMENT DETAIL
NO SCALE



6 TYPICAL CMU WALL REINFORCEMENT DETAIL
NO SCALE



7 TYPICAL CMU WALL CONTROL JOINT DETAIL
NO SCALE

REVISIONS

NO.	DATE	DESCRIPTION

KELLER SPRINGS LOFTS
LOFT APARTMENTS IN ADDISON, TEXAS

CONSTRUCTION ISSUE
10-17-2011

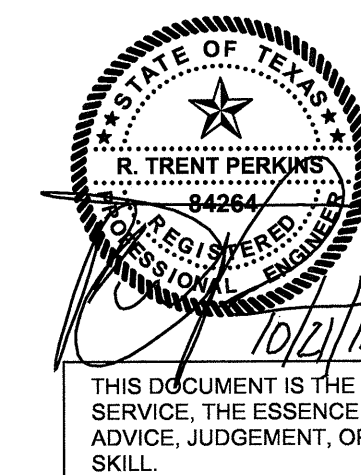
BGO architects
4144 N. Central Expy., Suite 855
Dallas, TX 75204
214.520.8878
bgoarchitects.com

DATE
08-05-2011

PROJECT
11129

SHEET NUMBER

SG1.02



THE SEAL APPEARING ON THIS DOCUMENT WAS AUTHORIZED BY R. TRENT PERKINS, P.E. 84264



PARKIN - PERKINS - OLSEN CONSULTING ENGINEERING, INC.
9330 LBJ Freeway Suite 1055
Dallas, Texas 75243
Tel 214.221.2220 Fax 214.221.2252
Project No. 39155
Registration No. F-1479

THIS DOCUMENT IS THE RENDERING OF A PROFESSIONAL SERVICE, THE ESSENCE OF WHICH IS THE PROVIDING OF ADVICE, JUDGEMENT, OPINION, OR SIMILAR PROFESSIONAL SKILL.