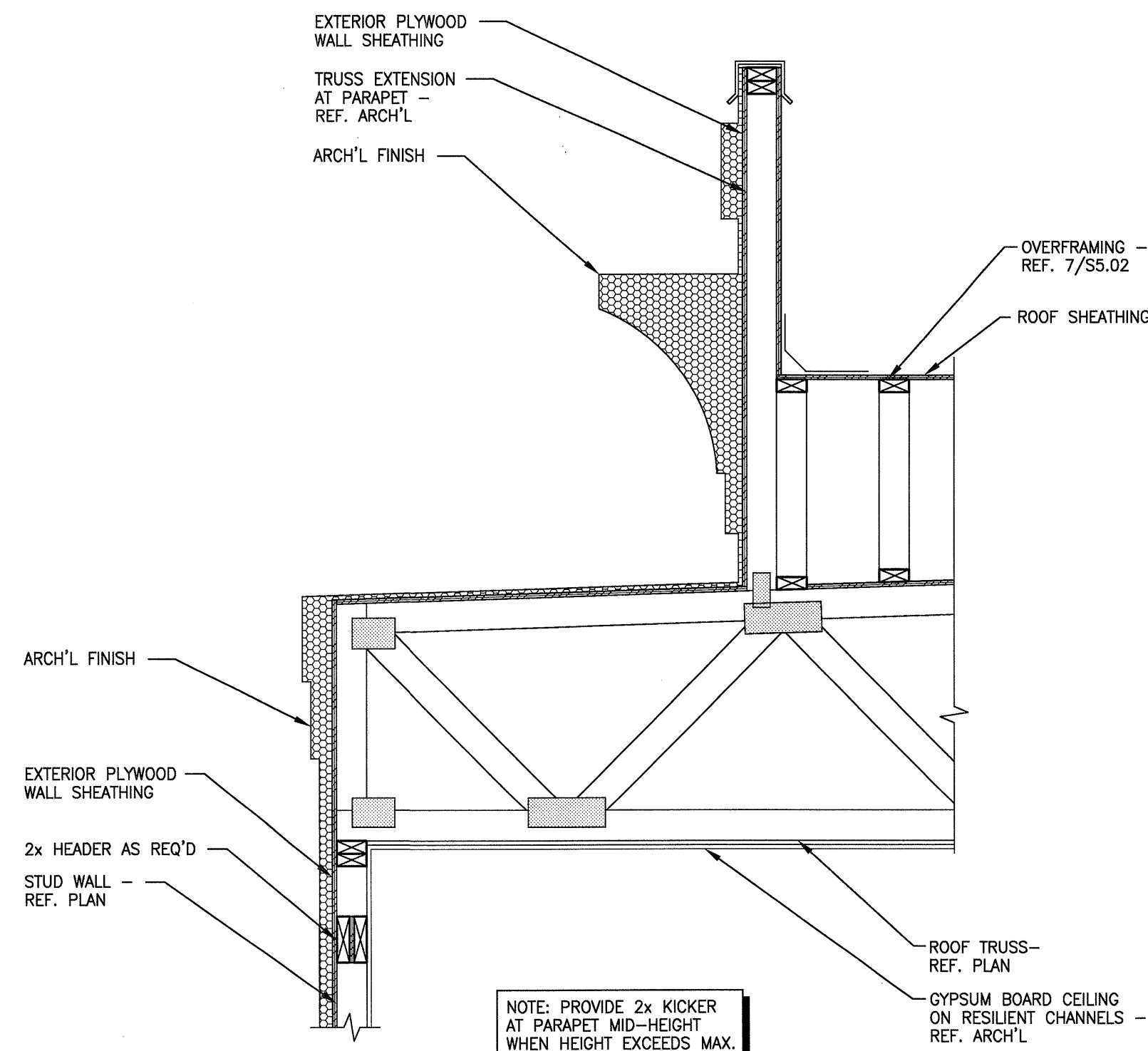
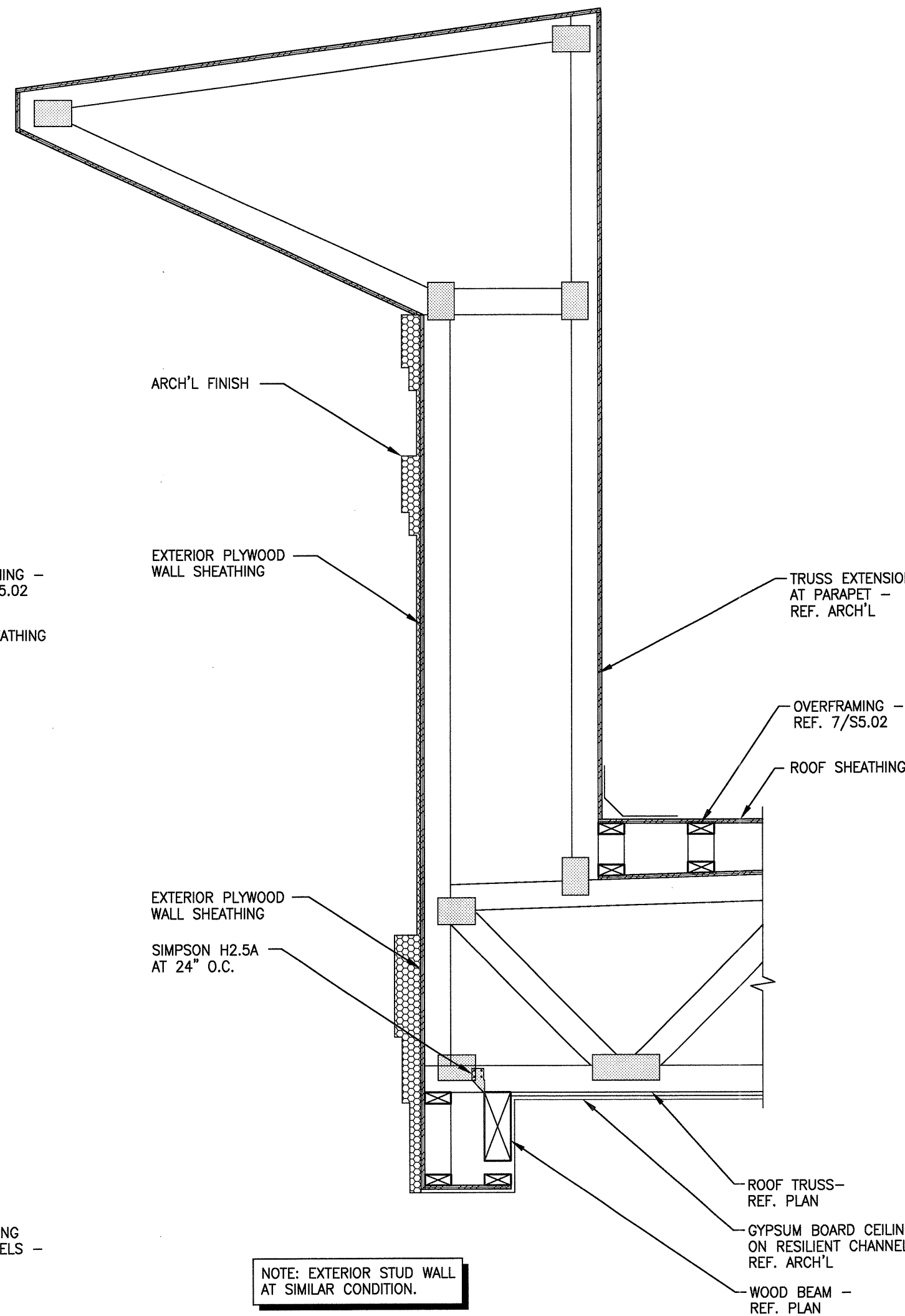


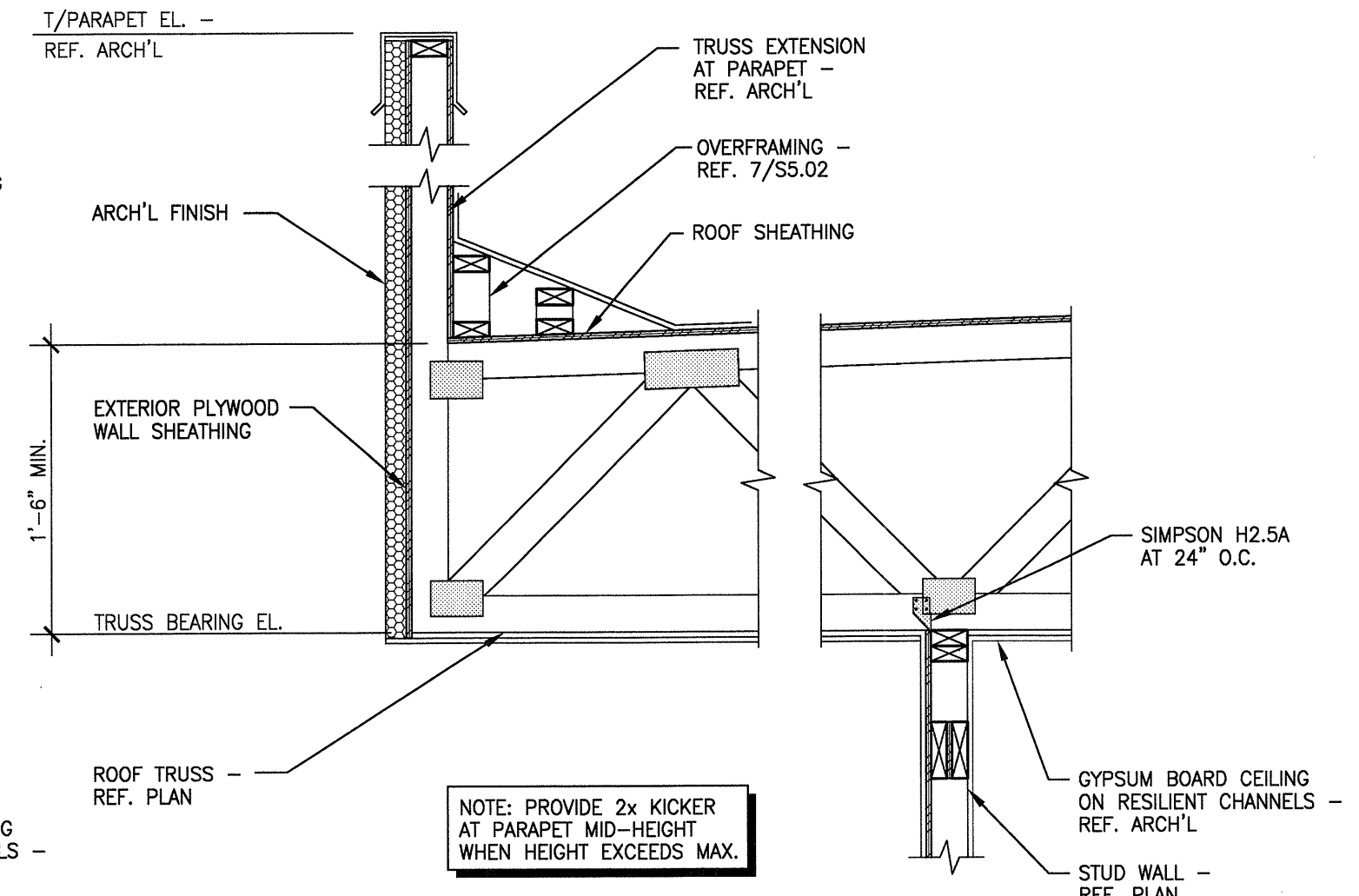
1 SECTION
S5.02 NO SCALE



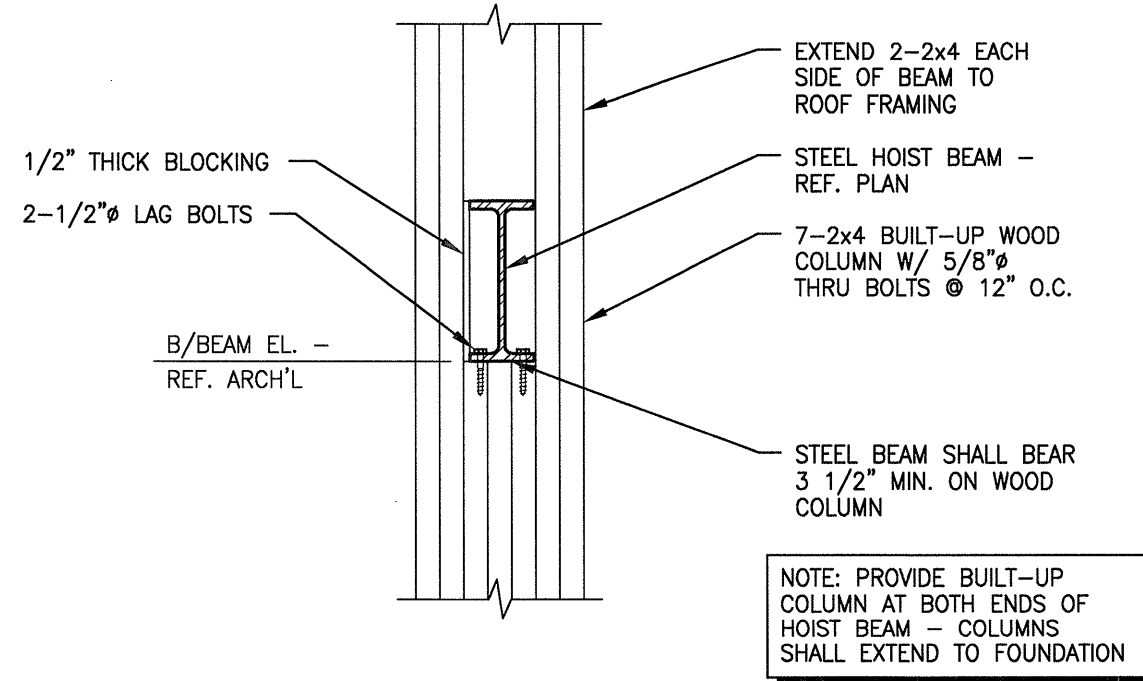
2 SECTION
S5.02 NO SCALE



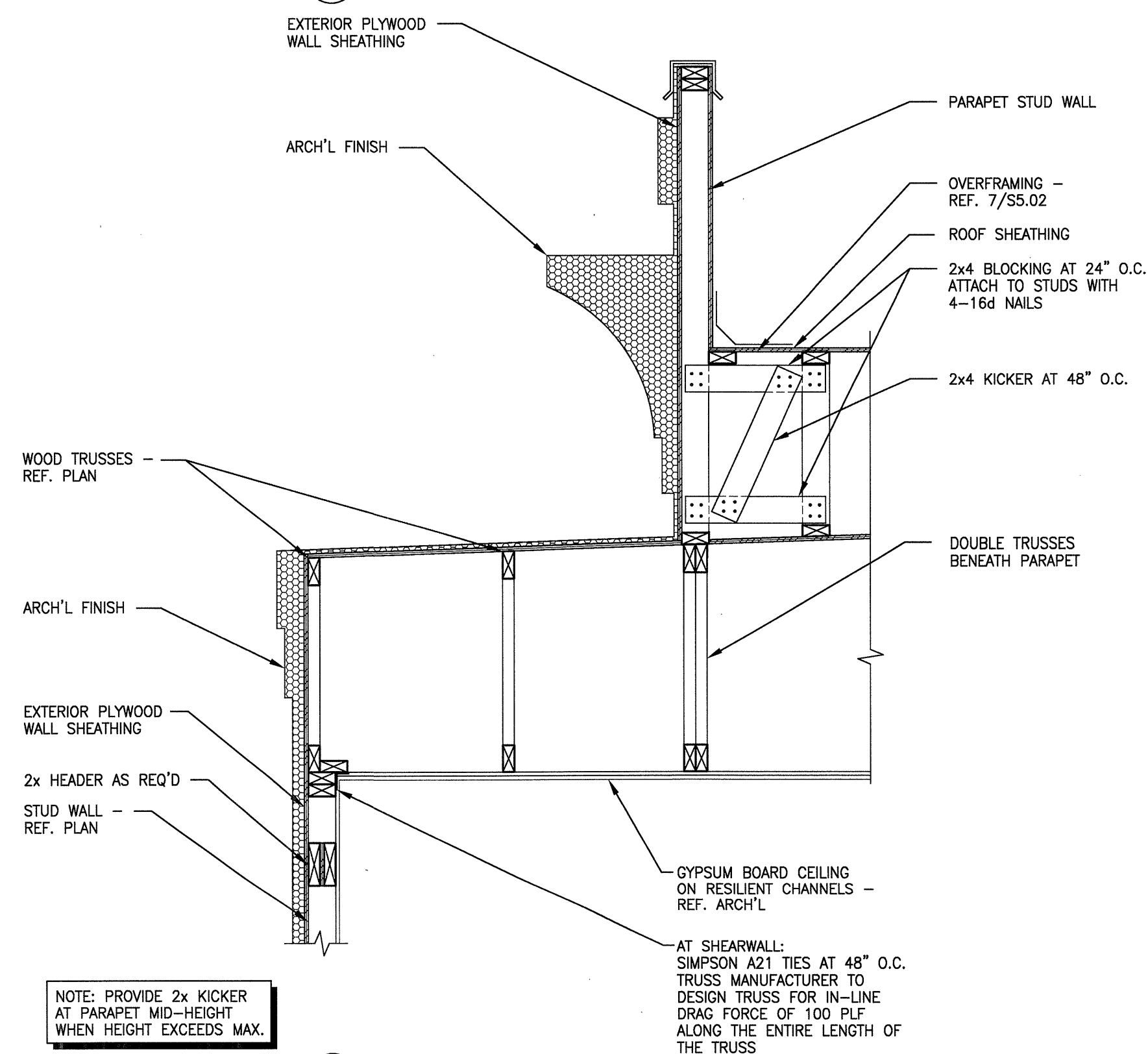
3 SECTION
S5.02 NO SCALE



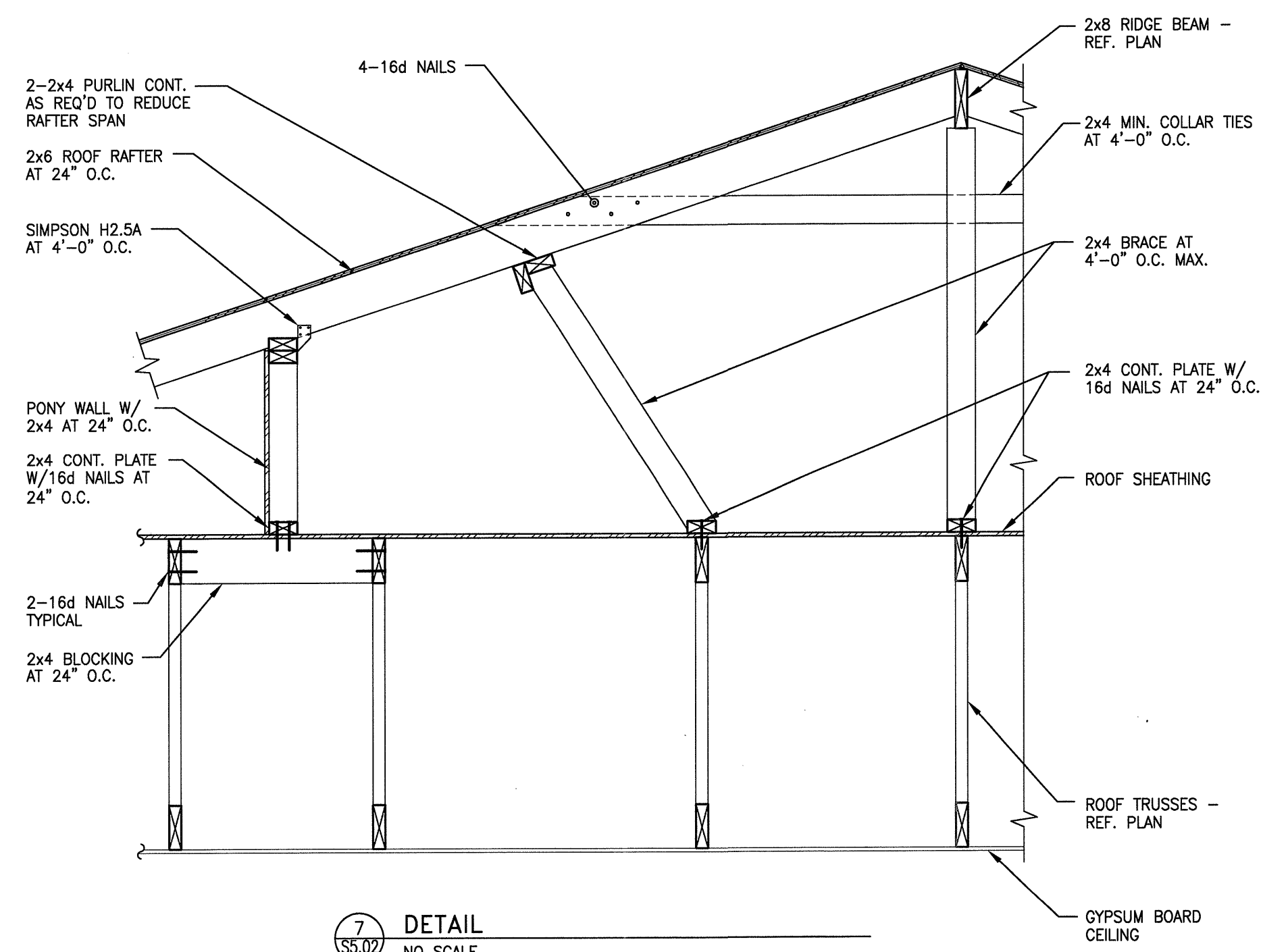
4 SECTION
S5.02 NO SCALE



5 ELEVATOR BEAM DETAIL
S5.02 NO SCALE



6 SECTION
S5.02 NO SCALE



7 DETAIL
S5.02 NO SCALE

REVISIONS

KELLER SPRINGS LOFTS

LOFT APARTMENTS IN ADDISON, TEXAS

CONSTRUCTION ISSUE
10-17-2011



4144 N. Central Expy.,
Suite 855
Dallas, TX 75204
214.520.8878
bgoarchitects.com

DATE

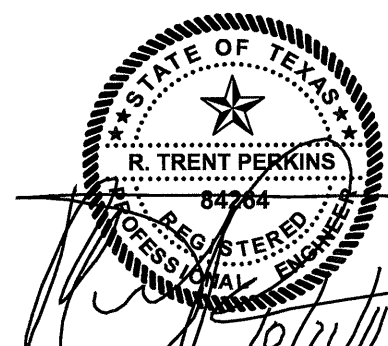
08-05-2011

PROJECT

11129

SHEET NUMBER

S5.02



THE SEAL APPEARING
ON THIS DOCUMENT
WAS AUTHORIZED BY
R. TRENT PERKINS, P.E. 84284

THIS DOCUMENT IS THE RENDERING OF A PROFESSIONAL
SERVICE, THE ESSENCE OF WHICH IS THE PROVIDING OF
ADVICE, JUDGEMENT, OPINION, OR SIMILAR PROFESSIONAL
SKILL.



PARKIN - PERKINS - OLSEN
CONSULTING ENGINEERING, INC.
9330 LBJ Freeway Suite 1055
Dallas, Texas 75243
Tel 214.221.2220 Fax 214.221.2252
Project No. 39155
Registration No. P-1479