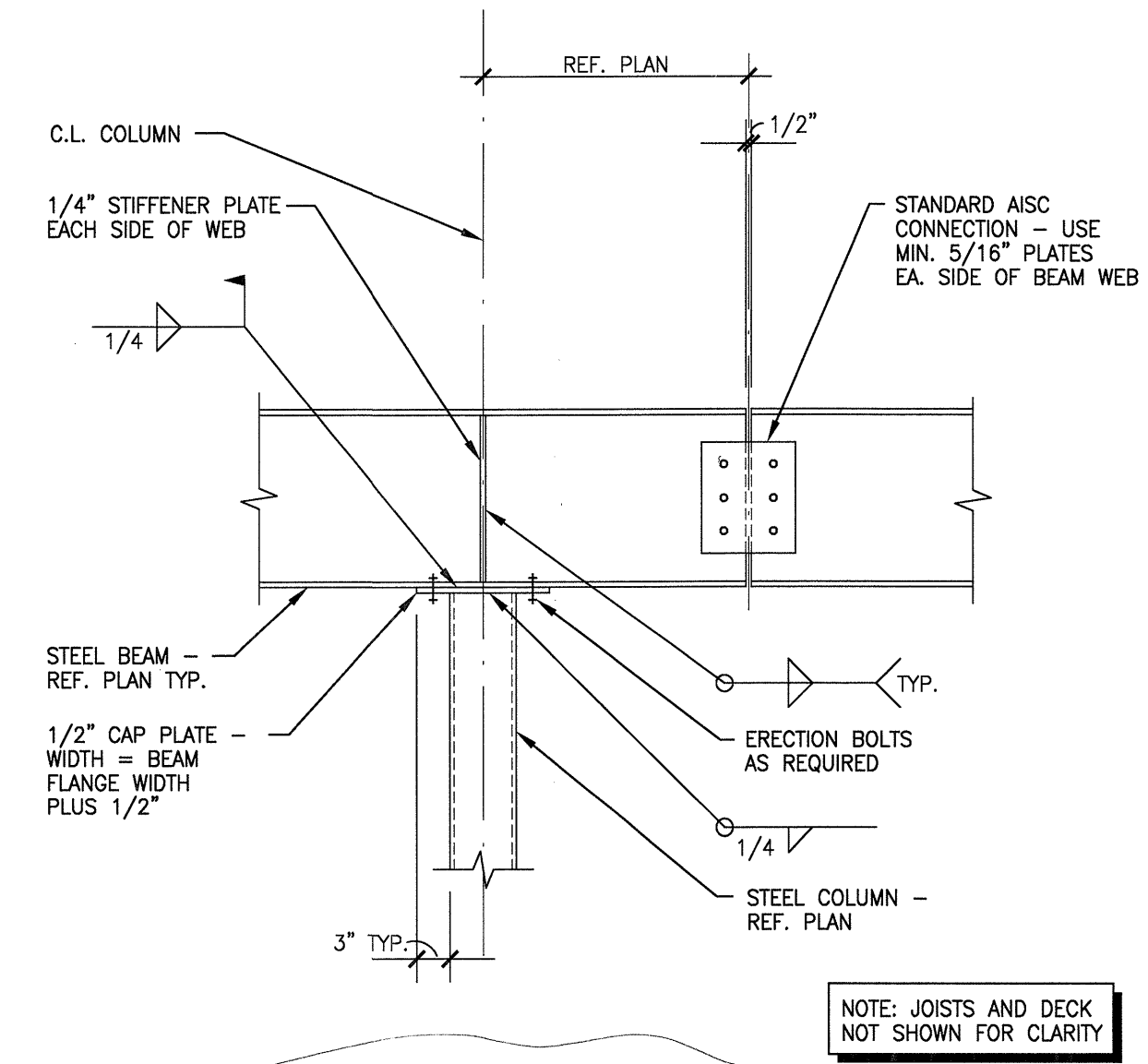


1 TYPICAL BEAM TO COLUMN CONNECTION DETAIL  
NO SCALE

RFP 164

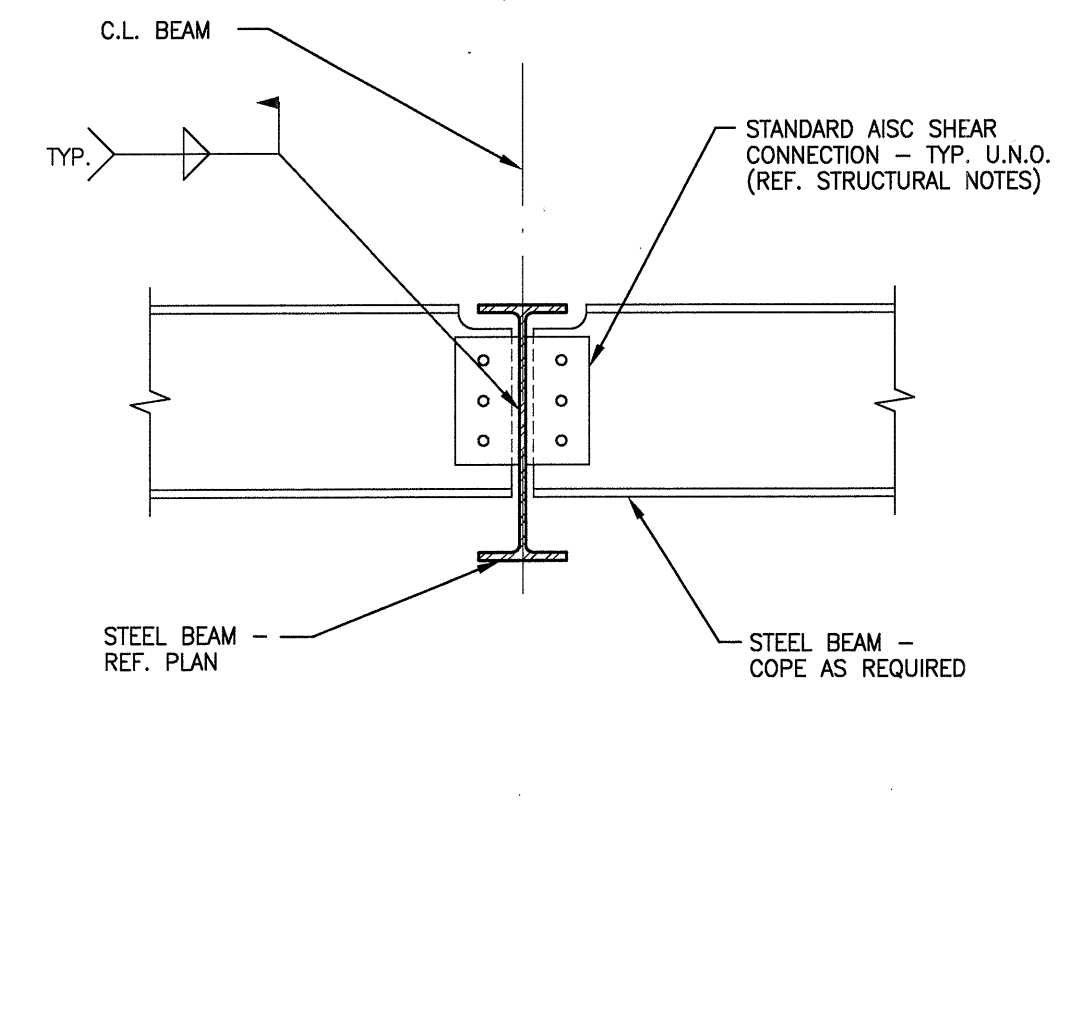
NOTE: JOISTS AND DECK NOT SHOWN FOR CLARITY



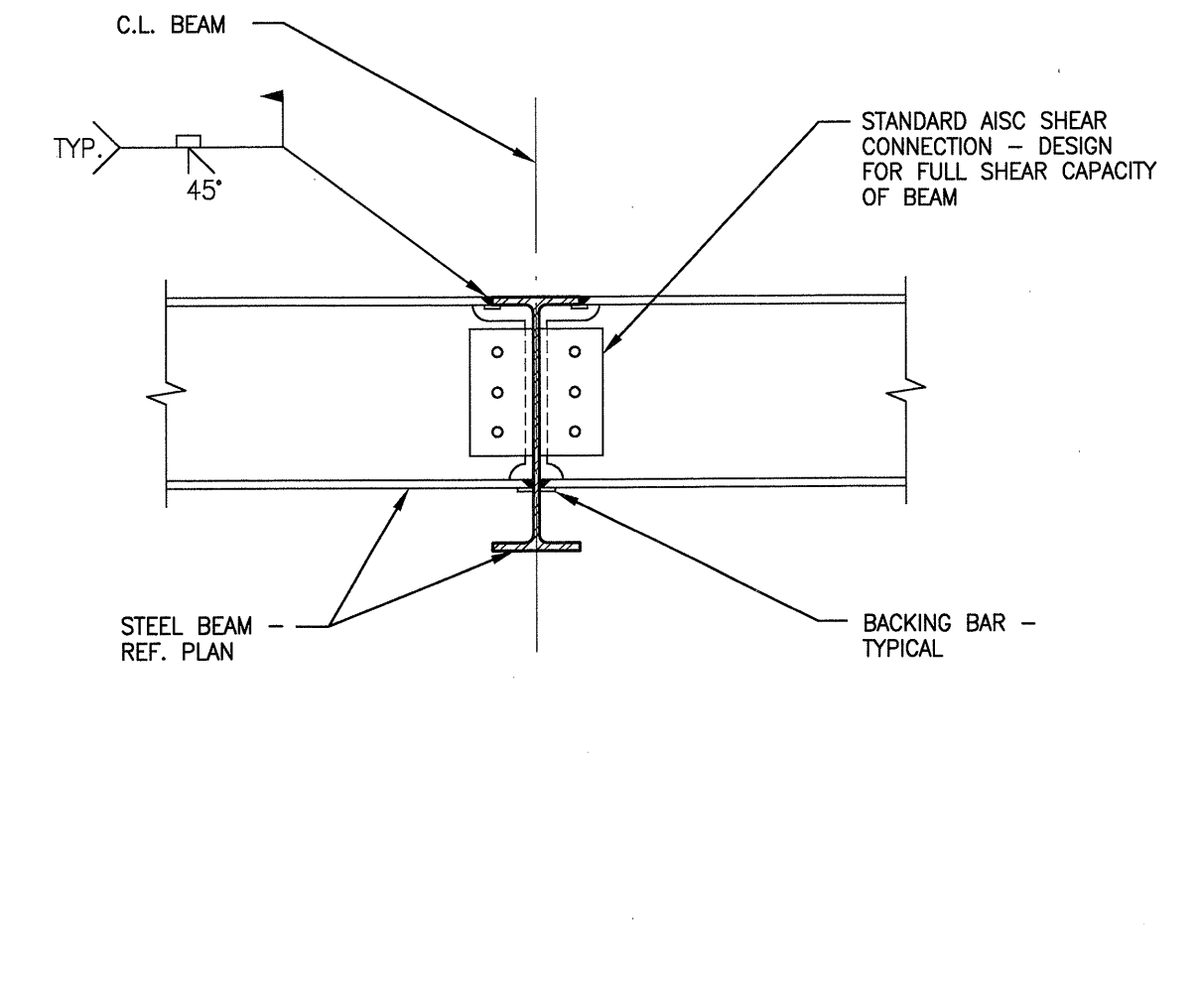
2 TYPICAL BEAM SPLICE DETAIL  
NO SCALE

RFP 164

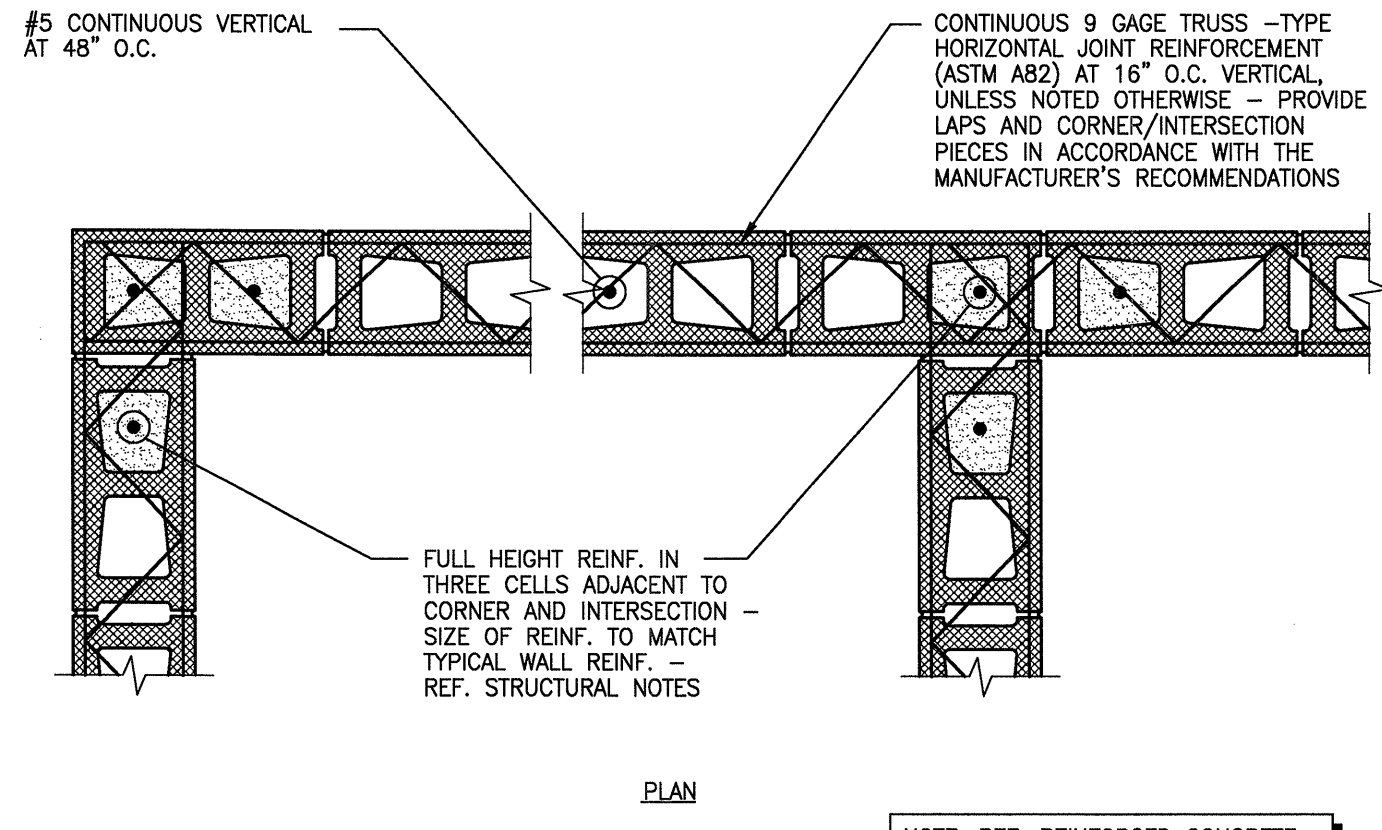
NOTE: JOISTS AND DECK NOT SHOWN FOR CLARITY



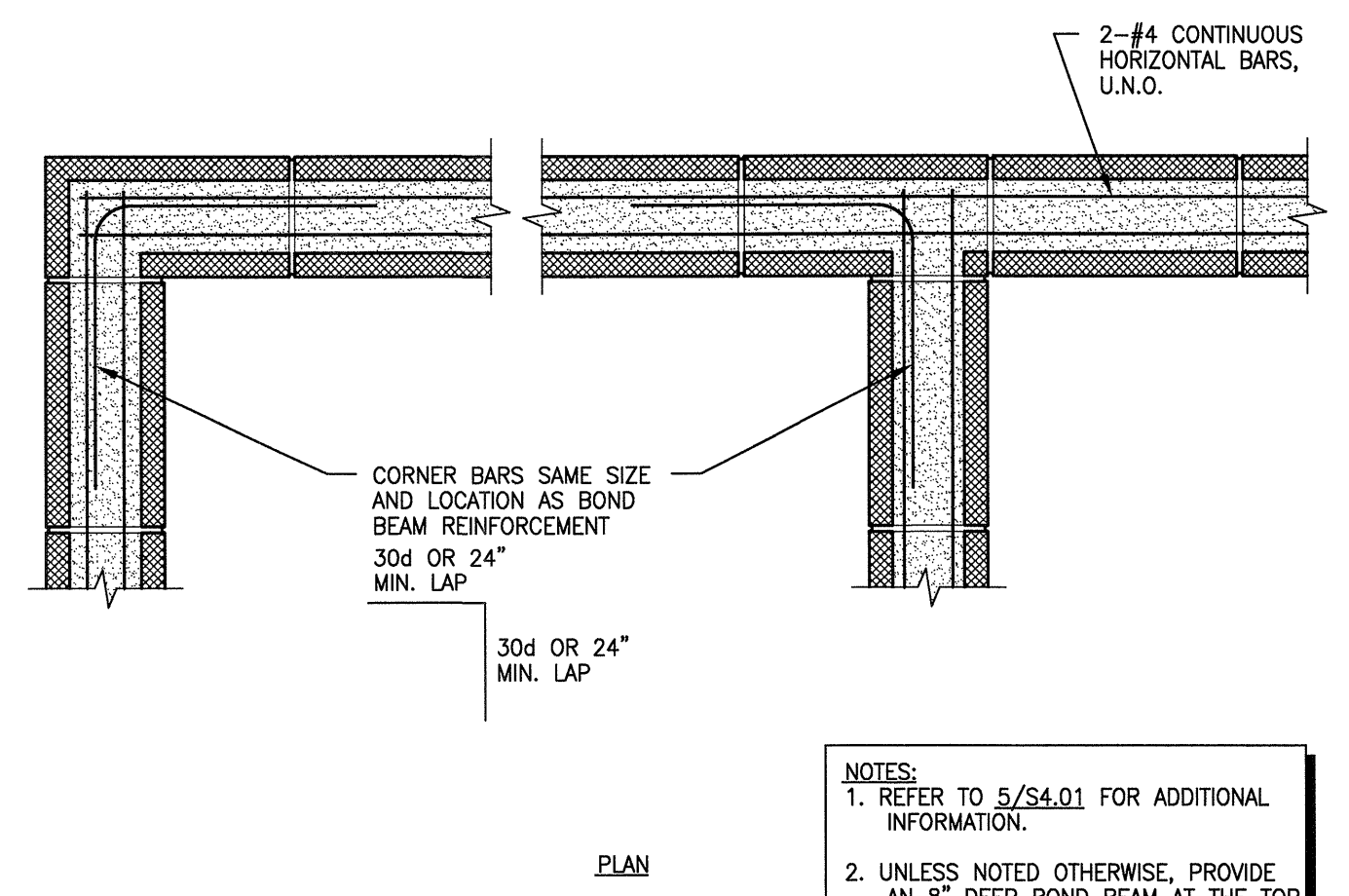
3 TYPICAL BEAM TO BEAM SHEAR CONNECTION DETAIL  
NO SCALE



4 TYPICAL BEAM TO BEAM MOMENT CONNECTION DETAIL  
NO SCALE

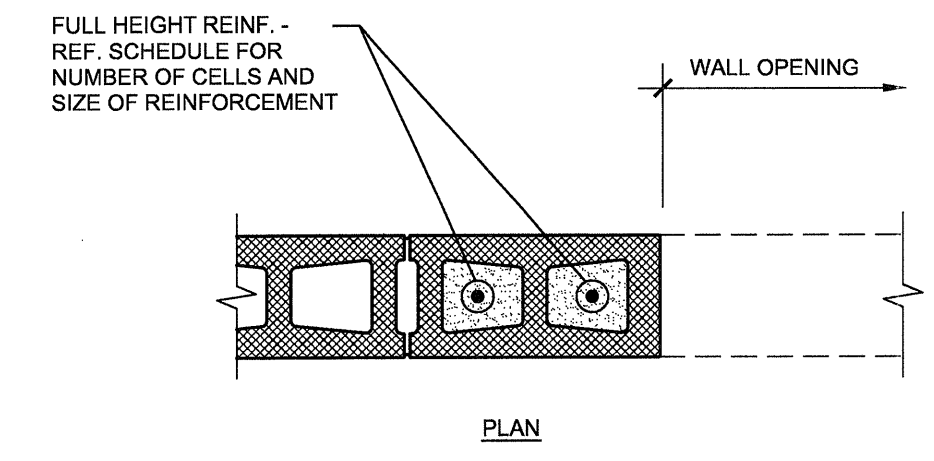


5 TYPICAL CMU WALL REINFORCEMENT DETAIL  
NO SCALE



6 TYPICAL CMU WALL BOND BEAM REINFORCEMENT DETAIL  
NO SCALE

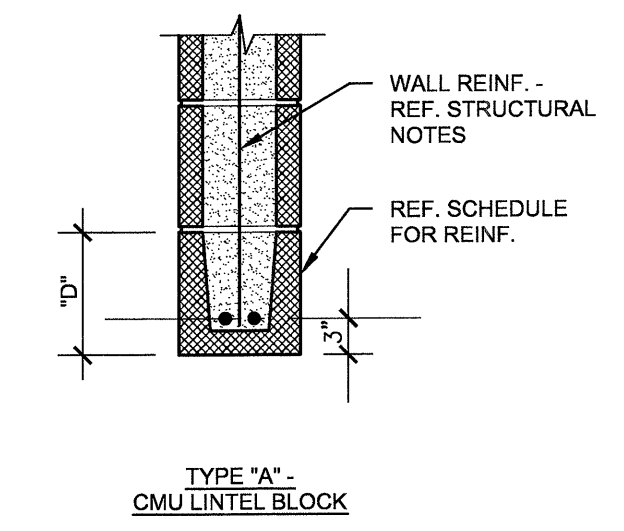
NOTES:  
1. REFER TO 5/S4.01 FOR ADDITIONAL INFORMATION.  
2. UNLESS NOTED OTHERWISE, PROVIDE AN 8" DEEP BOND BEAM AT THE TOP OF CMU WALLS.



OPENING WIDTH	CMU JAMB			
	EXTERIOR		INTERIOR	
	NUMBER OF GROUDED CELLS	REINF./CELL	NUMBER OF GROUDED CELLS	REINF./CELL
< 4'-0"	2	1-#5	2	1-#5
< 8'-0"	3	1-#5	2	1-#5
< 12'-0"	3	1-#6	2	1-#5

NOTES:  
1. HORIZONTAL REINFORCEMENT OMITTED FOR CLARITY. REFER TO 02/MYD02 FOR ADDITIONAL INFORMATION.  
2. AT STORM SHELTERS, USE FOUR (4) GROUDED CELLS WITH 2-#8 BARS (1 EACH FACE) IN EACH CELL (4'-0" OPENING MAX.)

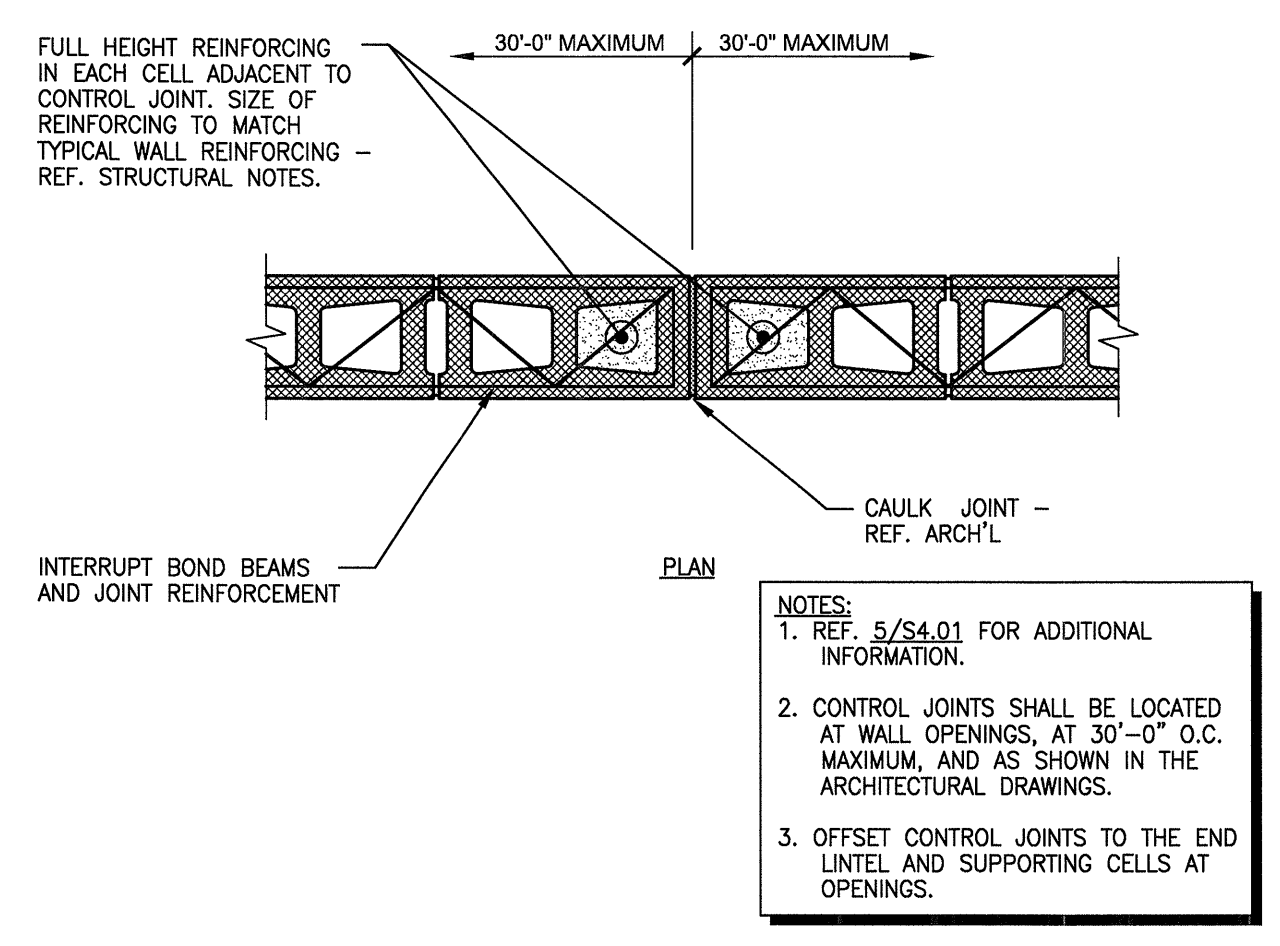
7 TYPICAL CMU JAMB SCHEDULE  
NO SCALE



MARK	TYPE	DEPTH, "D"	CONCRETE MASONRY LINTEL SCHEDULE	
			REINF.	MAXIMUM OPENING
TYPICAL, U.N.O.	A	8"	2-#4 CONT.	4'-0"
TYPICAL, U.N.O.	A	16"	2-#5 CONT.	8'-0"
TYPICAL, U.N.O.	A	16"	2-#8 CONT.	10'-0"

NOTES:  
1. EXTEND BEAMS 8" BEYOND FACE OF OPENING.  
2. VERTICAL CELLS ADJACENT TO OPENINGS SHALL BE REINFORCED PER TYP. WALL REINF. AND GROUDED SOLID - REF. STRUCTURAL NOTES.

8 TYPICAL CMU LINTEL SCHEDULE  
NO SCALE



9 TYPICAL CMU WALL CONTROL JOINT DETAIL  
NO SCALE

NOTES:  
1. REFER TO 5/S4.01 FOR ADDITIONAL INFORMATION.  
2. CONTROL JOINTS SHALL BE LOCATED AT WALL OPENINGS, AT 30'-0" O.C. MAXIMUM, AND AS SHOWN IN THE ARCHITECTURAL DRAWINGS.  
3. OFFSET CONTROL JOINTS TO THE END LINTEL AND SUPPORTING CELLS AT OPENINGS.

REVISIONS


KELLER SPRINGS LOFTS  
LOFT APARTMENTS IN ADDISON, TEXAS

CONSTRUCTION ISSUE  
10-17-2011

BGO architects  
4144 N. Central Expy., Suite 855  
Dallas, TX 75204  
214.520.8878  
bgoarchitects.com

DATE  
08-05-2011  
PROJECT  
11129  
SHEET NUMBER

S4.01

THE SEAL APPEARING ON THIS DOCUMENT WAS AUTHORIZED BY R. TRENT PERKINS, P.E. 84264  
THIS DOCUMENT IS THE RENDERING OF A PROFESSIONAL SERVICE, THE ESSENCE OF WHICH IS THE PROVIDING OF ADVICE, JUDGEMENT, OPINION, OR SIMILAR PROFESSIONAL SKILL.

PRO  
PARKIN - PERKINS - OLSEN CONSULTING ENGINEERING, INC.  
9330 LBJ Freeway Suite 1055  
Dallas, Texas 75243  
Tel 214.221.2220 Fax 214.221.2252  
Project No. 39155  
Registration No. F-1479