

**POST-TENSIONING PLAN NOTES:**

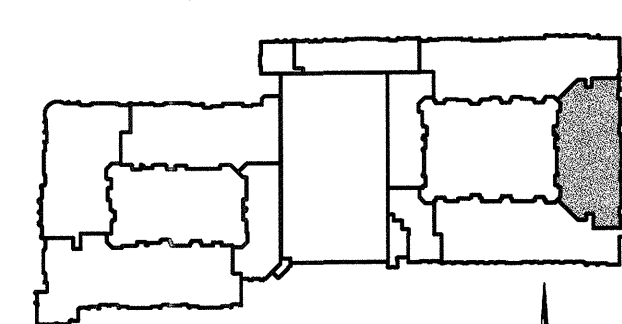
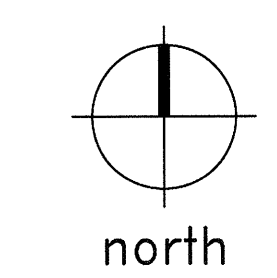
- REFER TO SHEETS S1.01 - S1.03 FOR ADDITIONAL INFORMATION INCLUDING CONVENTIONAL REINFORCEMENT REQUIREMENTS.
- REFER TO SHEETS S3.01 - S3.05 FOR TYPICAL POST-TENSIONED SLAB DETAILS.
- TENDON DRAPES ARE MEASURED UPWARD FROM THE BOTTOM OF THE CONCRETE SOFFIT TO THE CENTER OF GRAVITY (CG) OF THE TENDON.
- TENDON PROFILES SHALL CONFORM TO CONTROL POINTS SHOWN ON THE STRUCTURAL DRAWINGS AND SHALL BE IN APPROXIMATE PARABOLIC DRAPE BETWEEN SUPPORTS, POINTS OF INFLECTION, AND LOW POINTS.
- BANDED TENDON FORCES SHOWN AS F=...K ON PLAN, INDICATE THE EFFECTIVE POST-TENSION FORCE IN KIPS (AFTER ALL POST-TENSIONING LOSSES HAVE OCCURRED) TO BE PLACED SYMMETRICALLY ABOUT THE CENTERLINE, EXCEPT AT SLAB EDGE CONDITIONS.
- UNIFORMLY SPACED TENDON FORCES SHOWN AS F=...K/FT ON PLAN INDICATE THE EFFECTIVE POST-TENSION FORCE IN KIPS PER FOOT OF SLAB (AFTER ALL POST-TENSIONING LOSSES HAVE OCCURRED). SPACING OF UNIFORM TENDONS OR GROUPS OF TENDONS SHALL NOT EXCEED EIGHT TIMES THE SLAB THICKNESS, FIVE FEET, OR SPACINGS NOTED ON PLAN. PROVIDE A MINIMUM OF TWO POST-TENSIONING TENDONS THROUGH THE CRITICAL SHEAR SECTION AT THE COLUMN AS SHOWN IN THE TYPICAL DETAILS.
- RECOMMENDED PLACEMENT SEQUENCE OF TENDONS:
  - PLACE TENDON GROUP AT COLUMN CENTERLINE FOR UNIFORMLY SPACED TENDONS FIRST.
  - PLACE BANDED TENDONS SECOND.
  - PLACE REMAINING UNIFORMLY SPACED TENDONS.
- SLIGHT HORIZONTAL PLAN DEVIATIONS OF SLAB TENDONS ARE PERMISSIBLE WHEN REQUIRE TO AVOID OPENINGS, INSERTS, AND DOWELS WHICH ARE SPECIFICALLY LOCATED. THE DEVIATION SHALL HAVE A RADIUS OF CURVATURE OF NO LESS THAN TWENTY-ONE FEET OR A HORIZONTAL DEVIATION OF NO MORE THAN 1 TO 12. REFER TO TYPICAL DETAILS FOR ADDITIONAL REINFORCEMENT REQUIRED AT CURVED TENDONS.
- UNIFORMLY SPACED TENDONS SHALL BE STRESSED BEFORE BANDED TENDONS.

**LEGEND**

- ← = TENDON LIVE END (STRESS END)
- = TENDON DEAD LOAD
- = TENDON DRAPE

XREF SHEETS:

PARTIAL TENDON LAYOUT PLAN  
SCALE: 1/8"=1'-0"



KEY PLAN

THE SEAL APPEARING ON THIS DOCUMENT WAS AUTHORIZED BY  
**R. TRENT PERKINS**, P.E. 84264  
 REGISTERED PROFESSIONAL ENGINEER  
 STATE OF TEXAS

THIS DOCUMENT IS THE RENDERING OF A PROFESSIONAL SERVICE, THE ESSENCE OF WHICH IS THE PROVIDING OF ADVICE, JUDGEMENT, OPINION, OR SIMILAR PROFESSIONAL SKILL.

**PRO**  
**PARKIN - PERKINS - OLSEN**  
 CONSULTING ENGINEERING, INC.  
 9330 LBJ Freeway Suite 1055  
 Dallas, Texas 75243  
 Tel 214.221.2220 Fax 214.221.2252  
 Project No. 39155  
 Registration No. F-1479

REVISIONS	
△	SLAB ON VOID FOUNDATION 11/18/2011

**KELLER SPRINGS LOFTS**  
 LOFT APARTMENTS IN ADDISON, TEXAS

CONSTRUCTION ISSUE  
 10-17-2011

**BGO**  
 architects  
 4144 N. Central Expy., Suite 855  
 Dallas, TX 75204  
 214.520.8878  
 bgoarchitects.com

DATE  
 08-05-2011

PROJECT  
 11129

SHEET NUMBER  
**S3.18**