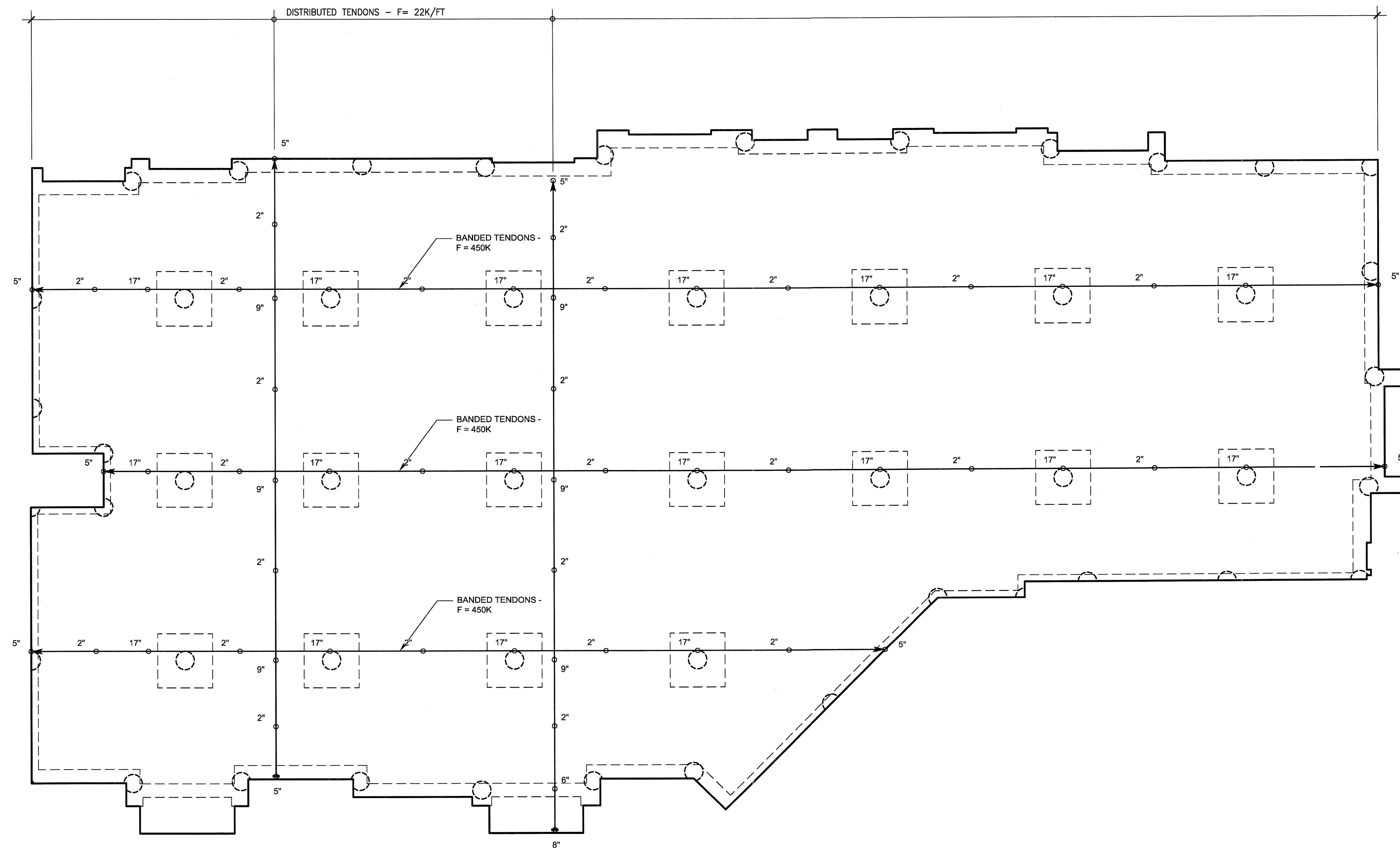
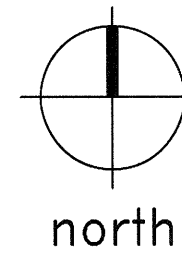
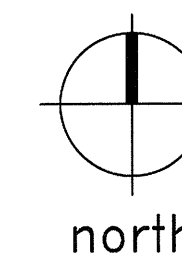


1
S3.17 PARTIAL TENDON LAYOUT PLAN
SCALE: 1/8"=1'-0"



2
S3.17 PARTIAL TENDON LAYOUT PLAN
SCALE: 1/8"=1'-0"

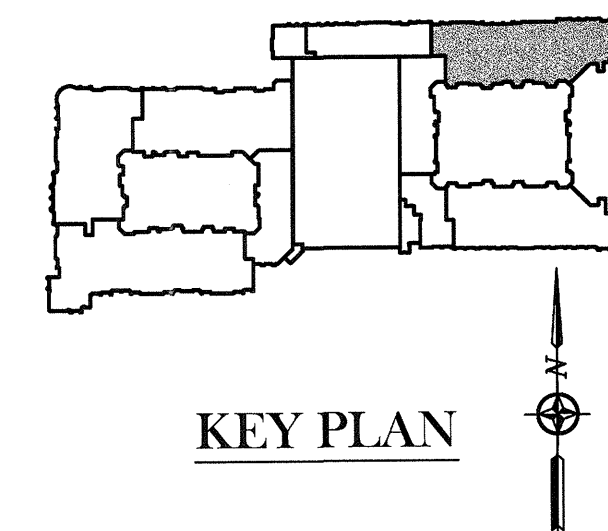


POST-TENSIONING PLAN NOTES:

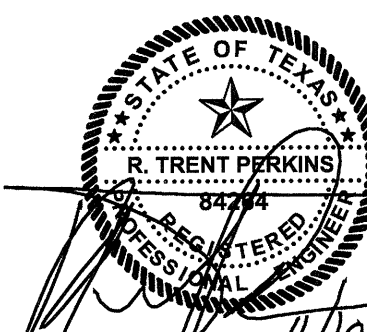
1. REFER TO SHEETS S1.01 - S1.03 FOR ADDITIONAL INFORMATION INCLUDING CONVENTIONAL REINFORCEMENT REQUIREMENTS.
2. REFER TO SHEETS S3.01 - S3.05 FOR TYPICAL POST-TENSIONED SLAB DETAILS.
3. TENDON DRAPES ARE MEASURED UPWARD FROM THE BOTTOM OF THE CONCRETE SOFFIT TO THE CENTER OF GRAVITY (CG) OF THE TENDON.
4. TENDON PROFILES SHALL CONFORM TO CONTROL POINTS SHOWN ON THE STRUCTURAL DRAWINGS AND SHALL BE IN APPROXIMATE PARABOLIC DRAPE BETWEEN SUPPORTS, POINTS OF INFLECTION, AND LOW POINTS.
5. BANDED TENDON FORCES SHOWN AS F=___K ON PLAN, INDICATE THE EFFECTIVE POST-TENSION FORCE IN KIIPS (AFTER ALL POST-TENSIONING LOSSES HAVE OCCURRED) TO BE PLACED SYMMETRICALLY ABOUT THE CENTERLINE, EXCEPT AT SLAB EDGE CONDITIONS.
6. UNIFORMLY SPACED TENDON FORCES SHOWN AS F=___K/FT ON PLAN INDICATE THE EFFECTIVE POST-TENSION FORCE IN KIIPS PER FOOT OF SLAB (AFTER ALL POST-TENSIONING LOSSES HAVE OCCURRED). SPACING OF UNIFORM TENDONS OR GROUPS OF TENDONS SHALL NOT EXCEED EIGHT TIMES THE SLAB THICKNESS, FIVE FEET, OR SPACINGS NOTED ON PLAN. PROVIDE A MINIMUM OF TWO POST-TENSIONING TENDONS THROUGH THE CRITICAL SHEAR SECTION AT THE COLUMN AS SHOWN IN THE TYPICAL DETAILS.
7. RECOMMENDED PLACEMENT SEQUENCE OF TENDONS:
 - A. PLACE TENDON GROUP AT COLUMN CENTERLINE FOR UNIFORMLY SPACED TENDONS FIRST.
 - B. PLACE BANDED TENDONS SECOND.
 - C. PLACE REMAINING UNIFORMLY SPACED TENDONS.
8. SLIGHT HORIZONTAL PLAN DEVIATIONS OF SLAB TENDONS ARE PERMISSIBLE WHEN REQUIRE TO AVOID OPENINGS, INSERTS, AND DOWELS WHICH ARE SPECIFICALLY LOCATED. THE DEVIATION SHALL HAVE A RADIUS OF CURVATURE OF NO LESS THAN TWENTY-ONE FEET OR A HORIZONTAL DEVIATION OF NO MORE THAN 1 TO 12. REFER TO TYPICAL DETAILS FOR ADDITIONAL REINFORCEMENT REQUIRED AT CURVED TENDONS.
9. UNIFORMLY SPACED TENDONS SHALL BE STRESSED BEFORE BANDED TENDONS.

LEGEND

- ← = TENDON LIVE END (STRESS END)
- = TENDON DEAD LOAD
- ⤵ = TENDON DRAPE
- X = XREF SHEETS:



KEY PLAN



THE SEAL APPEARING ON THIS DOCUMENT WAS AUTHORIZED BY R. TRENT PERKINS, P.E. 94264

THIS DOCUMENT IS THE RENDERING OF A PROFESSIONAL SERVICE, THE ESSENCE OF WHICH IS THE PROVIDING OF ADVICE, JUDGEMENT, OPINION, OR SIMILAR PROFESSIONAL SKILL.



PARKIN - PERKINS - OLSEN CONSULTING ENGINEERING, INC.
9330 LBJ Freeway Suite 1055
Dallas, Texas 75243
Tel 214.221.2220 Fax 214.221.2352
Project No. 39135
Registration No. F-1479

REVISIONS	
△	SLAB ON VOID FOUNDATION 11/18/2011

KELLER SPRINGS LOFTS

LOFT APARTMENTS IN ADDISON, TEXAS

CONSTRUCTION ISSUE
10-17-2011



4144 N. Central Expy., Suite 855
Dallas, TX 75204
214.520.8878
bgoarchitects.com

DATE
08-05-2011

PROJECT
11129

SHEET NUMBER
S3.17