

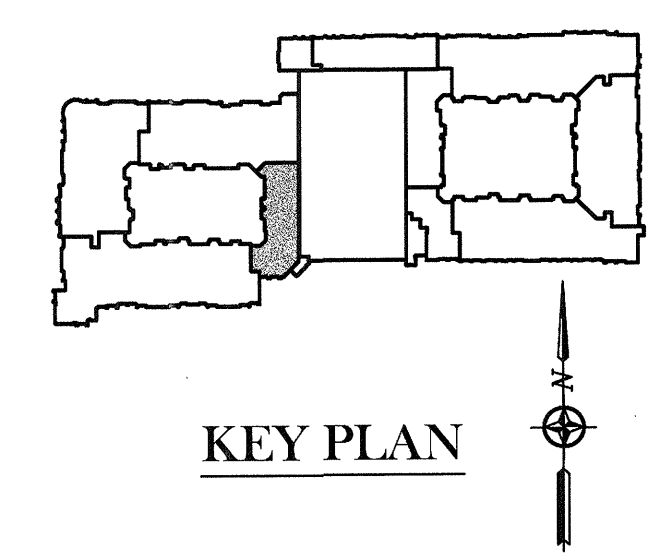
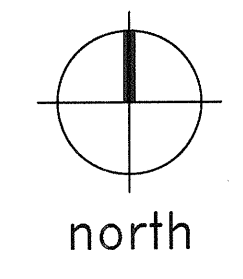
- POST-TENSIONING PLAN NOTES:**
- REFER TO SHEETS S1.01 - S1.03 FOR ADDITIONAL INFORMATION INCLUDING CONVENTIONAL REINFORCEMENT REQUIREMENTS.
 - REFER TO SHEETS S3.01 - S3.05 FOR TYPICAL POST-TENSIONED SLAB DETAILS.
 - TENDON DRAPES ARE MEASURED UPWARD FROM THE BOTTOM OF THE CONCRETE SOFFIT TO THE CENTER OF GRAVITY (CG) OF THE TENDON.
 - TENDON PROFILES SHALL CONFORM TO CONTROL POINTS SHOWN ON THE STRUCTURAL DRAWINGS AND SHALL BE IN APPROXIMATE PARABOLIC DRAPE BETWEEN SUPPORTS, POINTS OF INFLECTION, AND LOW POINTS.
 - BANDED TENDON FORCES SHOWN AS $F = \text{---}K$ ON PLAN, INDICATE THE EFFECTIVE POST-TENSION FORCE IN KIPS (AFTER ALL POST-TENSIONING LOSSES HAVE OCCURRED) TO BE PLACED SYMMETRICALLY ABOUT THE CENTERLINE, EXCEPT AT SLAB EDGE CONDITIONS.
 - UNIFORMLY SPACED TENDON FORCES SHOWN AS $F = \text{---}K/FT$ ON PLAN INDICATE THE EFFECTIVE POST-TENSION FORCE IN KIPS PER FOOT OF SLAB (AFTER ALL POST-TENSIONING LOSSES HAVE OCCURRED). SPACING OF UNIFORM TENDONS OR GROUPS OF TENDONS SHALL NOT EXCEED EIGHT TIMES THE SLAB THICKNESS, FIVE FEET, OR SPACINGS NOTED ON PLAN. PROVIDE A MINIMUM OF TWO POST-TENSIONING TENDONS THROUGH THE CRITICAL SHEAR SECTION AT THE COLUMN AS SHOWN IN THE TYPICAL DETAILS.
 - RECOMMENDED PLACEMENT SEQUENCE OF TENDONS:
 - PLACE TENDON GROUP AT COLUMN CENTERLINE FOR UNIFORMLY SPACED TENDONS FIRST.
 - PLACE BANDED TENDONS SECOND.
 - PLACE REMAINING UNIFORMLY SPACED TENDONS.
 - SLIGHT HORIZONTAL PLAN DEVIATIONS OF SLAB TENDONS ARE PERMISSIBLE WHEN REQUIRE TO AVOID OPENINGS, INSERTS, AND DOWELS WHICH ARE SPECIFICALLY LOCATED. THE DEVIATION SHALL HAVE A RADIUS OF CURVATURE OF NO LESS THAN TWENTY-ONE FEET OR A HORIZONTAL DEVIATION OF NO MORE THAN 1 TO 12. REFER TO TYPICAL DETAILS FOR ADDITIONAL REINFORCEMENT REQUIRED AT CURVED TENDONS.
 - UNIFORMLY SPACED TENDONS SHALL BE STRESSED BEFORE BANDED TENDONS.

LEGEND

- ← = TENDON LIVE END (STRESS END)
- = TENDON DEAD LOAD
- ⤴ = TENDON DRAPE
- x" = TENDON DRAPE

XREF SHEETS:

PARTIAL TENDON LAYOUT PLAN
SCALE: 1/8"=1'-0"



THE SEAL APPEARING ON THIS DOCUMENT WAS AUTHORIZED BY
R. TRENT PERKINS, P.E. 84264

THIS DOCUMENT IS THE RENDERING OF A PROFESSIONAL SERVICE, THE ESSENCE OF WHICH IS THE PROVIDING OF ADVICE, JUDGEMENT, OPINION, OR SIMILAR PROFESSIONAL SKILL.

PRO
PARKIN - PERKINS - OLSEN
 CONSULTING ENGINEERING, INC.

9330 LBJ Freeway Suite 1055
 Dallas, Texas 75243
 Tel 214.221.2220 Fax 214.221.2252
 Project No. 39155
 Registration No. P-1479

REVISIONS

NO.	DESCRIPTION	DATE
1	SLAB ON VOID FOUNDATION	11/18/2011

KELLER SPRINGS LOFTS
 LOFT APARTMENTS IN ADDISON, TEXAS

CONSTRUCTION ISSUE
 10-17-2011

BGO
 architects
 4144 N. Central Expy., Suite 055
 Dallas, TX 75204
 214.520.8878
 bgoarchitects.com

DATE
 08-05-2011

PROJECT
 11129

SHEET NUMBER
S3.14