

**POST-TENSIONING PLAN NOTES:**

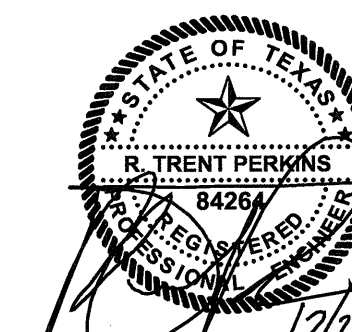
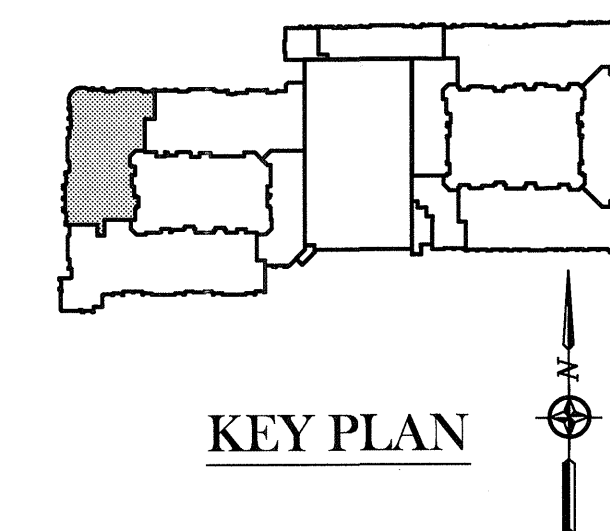
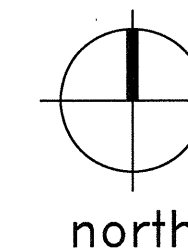
- REFER TO SHEETS S1.01 - S1.03 FOR ADDITIONAL INFORMATION INCLUDING CONVENTIONAL REINFORCEMENT REQUIREMENTS.
- REFER TO SHEETS S3.01 - S3.05 FOR TYPICAL POST-TENSIONED SLAB DETAILS.
- TENDON DRAPES ARE MEASURED UPWARD FROM THE BOTTOM OF THE CONCRETE SOFFIT TO THE CENTER OF GRAVITY (CG) OF THE TENDON.
- TENDON PROFILES SHALL CONFORM TO CONTROL POINTS SHOWN ON THE STRUCTURAL DRAWINGS AND SHALL BE IN APPROXIMATE PARABOLIC DRAPE BETWEEN SUPPORTS, POINTS OF INFLECTION, AND LOW POINTS.
- BANDED TENDON FORCES SHOWN AS F=\_\_\_K ON PLAN, INDICATE THE EFFECTIVE POST-TENSION FORCE IN KIPS (AFTER ALL POST-TENSIONING LOSSES HAVE OCCURRED) TO BE PLACED SYMMETRICALLY ABOUT THE CENTERLINE, EXCEPT AT SLAB EDGE CONDITIONS.
- UNIFORMLY SPACED TENDON FORCES SHOWN AS F=\_\_\_K/FT ON PLAN INDICATE THE EFFECTIVE POST-TENSION FORCE IN KIPS PER FOOT OF SLAB (AFTER ALL POST-TENSIONING LOSSES HAVE OCCURRED). SPACING OF UNIFORM TENDONS OR GROUPS OF TENDONS SHALL NOT EXCEED EIGHT TIMES THE SLAB THICKNESS, FIVE FEET, OR SPACINGS NOTED ON PLAN. PROVIDE A MINIMUM OF TWO POST-TENSIONING TENDONS THROUGH THE CRITICAL SHEAR SECTION AT THE COLUMN AS SHOWN IN THE TYPICAL DETAILS.
- RECOMMENDED PLACEMENT SEQUENCE OF TENDONS:
  - PLACE TENDON GROUP AT COLUMN CENTERLINE FOR UNIFORMLY SPACED TENDONS FIRST.
  - PLACE BANDED TENDONS SECOND.
  - PLACE REMAINING UNIFORMLY SPACED TENDONS.
- SLIGHT HORIZONTAL PLAN DEVIATIONS OF SLAB TENDONS ARE PERMISSIBLE WHEN REQUIRE TO AVOID OPENINGS, INSERTS, AND DOWELS WHICH ARE SPECIFICALLY LOCATED. THE DEVIATION SHALL HAVE A RADIUS OF CURVATURE OF NO LESS THAN TWENTY-ONE FEET OR A HORIZONTAL DEVIATION OF NO MORE THAN 1 TO 12. REFER TO TYPICAL DETAILS FOR ADDITIONAL REINFORCEMENT REQUIRED AT CURVED TENDONS.
- UNIFORMLY SPACED TENDONS SHALL BE STRESSED BEFORE BANDED TENDONS.

**LEGEND**

- ← = TENDON LIVE END (STRESS END)
- = TENDON DEAD LOAD
- ⌒ = TENDON DRAPE
- X" =

XREF SHEETS:

**PARTIAL TENDON LAYOUT PLAN**  
SCALE: 1/8"=1'-0"



THE SEAL APPEARING ON THIS DOCUMENT WAS AUTHORIZED BY R. TRENT PERKINS, P.E. 84264

THIS DOCUMENT IS THE RENDERING OF A PROFESSIONAL SERVICE, THE ESSENCE OF WHICH IS THE PROVIDING OF ADVICE, JUDGEMENT, OPINION, OR SIMILAR PROFESSIONAL SKILL.



**PARKIN - PERKINS - OLSEN**  
CONSULTING ENGINEERING, INC.  
9330 LBJ Freeway Suite 1055  
Dallas, Texas 75243  
Tel 214.221.2220 Fax 214.221.2252  
Project No. 39155  
Registration No. F-1479

REVISIONS	
△	SLAB ON VOID FOUNDATION 11/18/2011
△	SLAB ON GRADE FOR METER BANK 12/21/2011

**KELLER SPRINGS LOFTS**  
LOFT APARTMENTS IN ADDISON, TEXAS

CONSTRUCTION ISSUE  
10-17-2011

**BGO** architects  
4144 N. Central Exp., Suite 855  
Dallas, TX 75204  
214.520.8878  
bgoarchitects.com

DATE  
08-05-2011

PROJECT  
11129

SHEET NUMBER  
**S3.12**