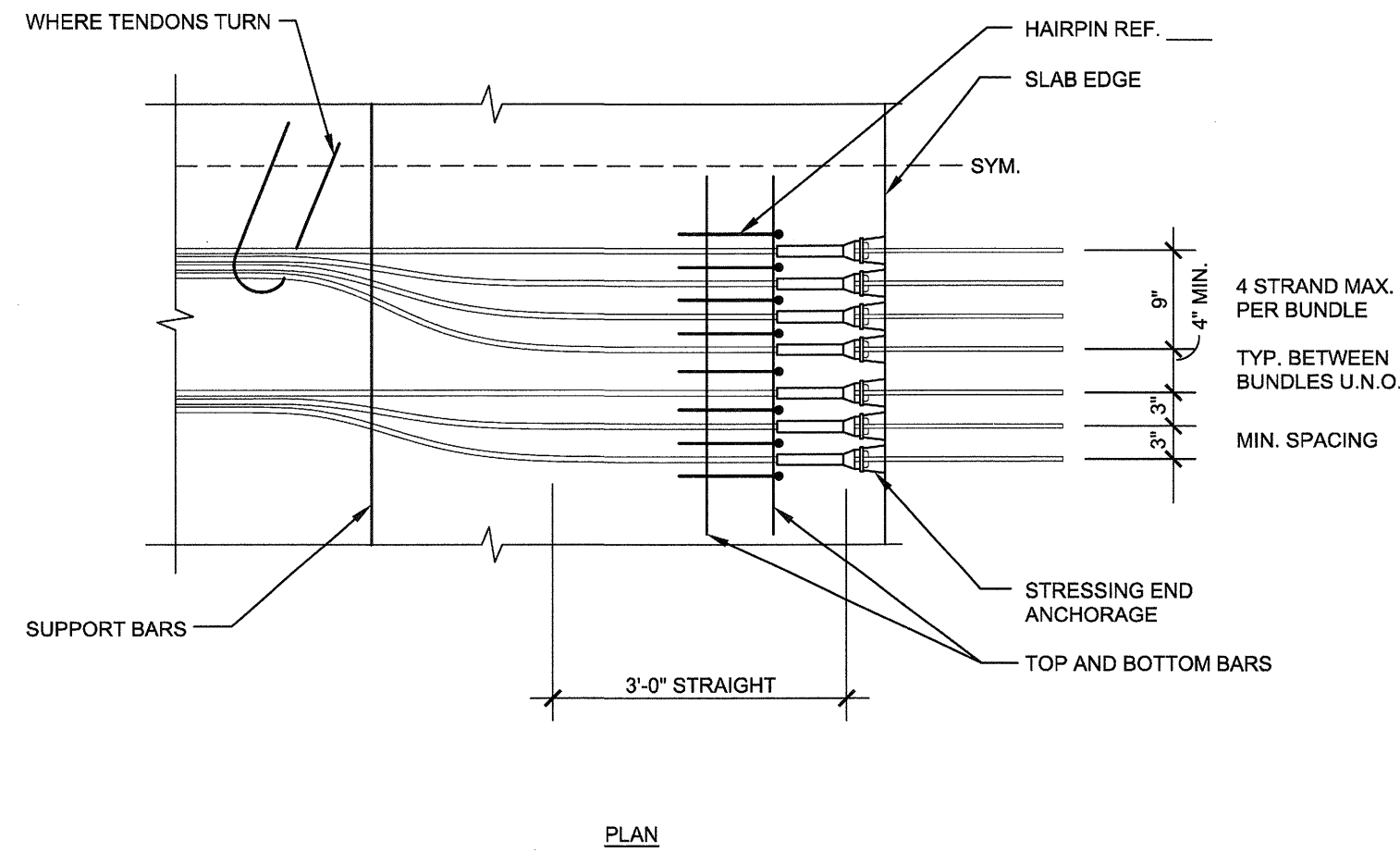
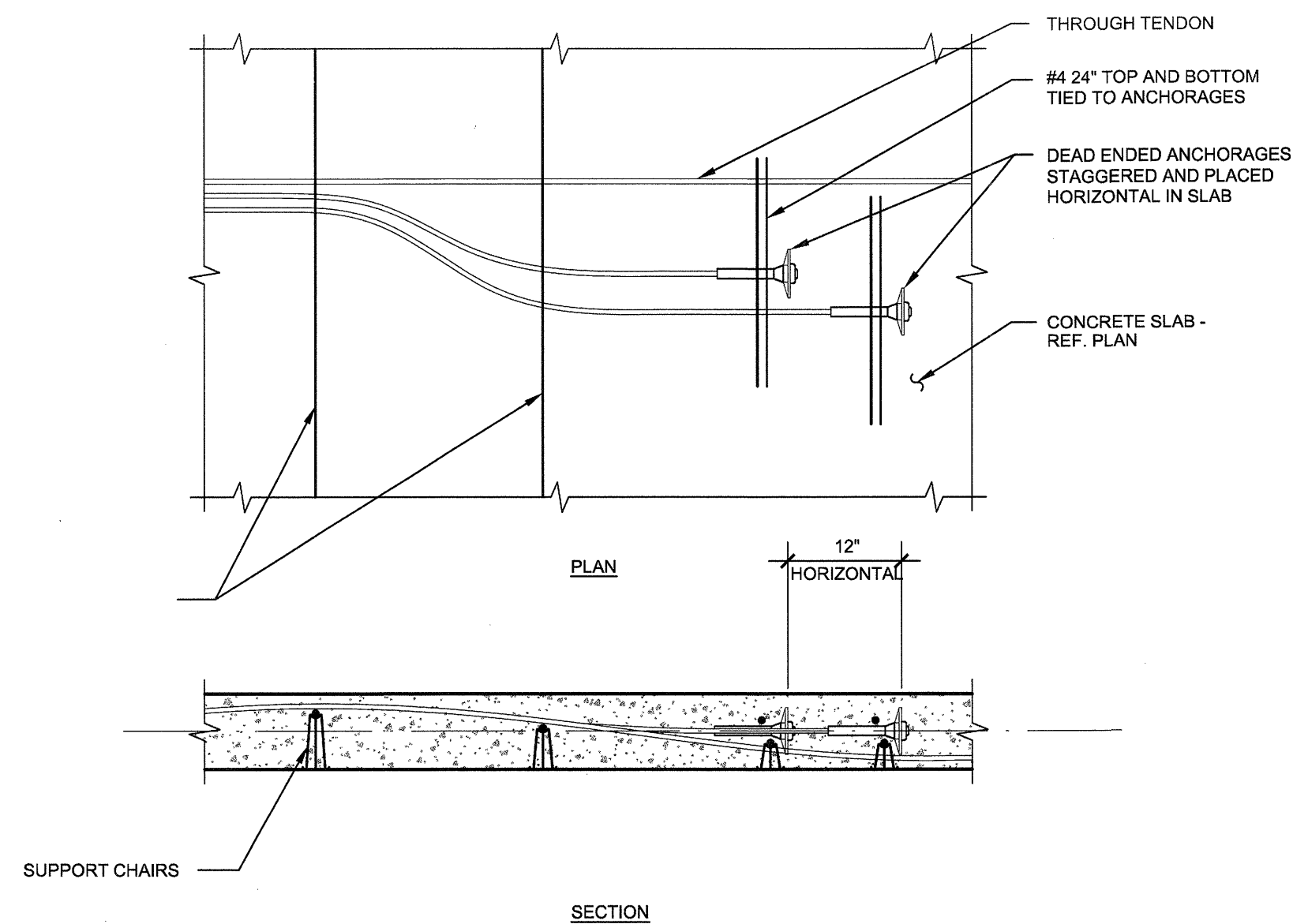


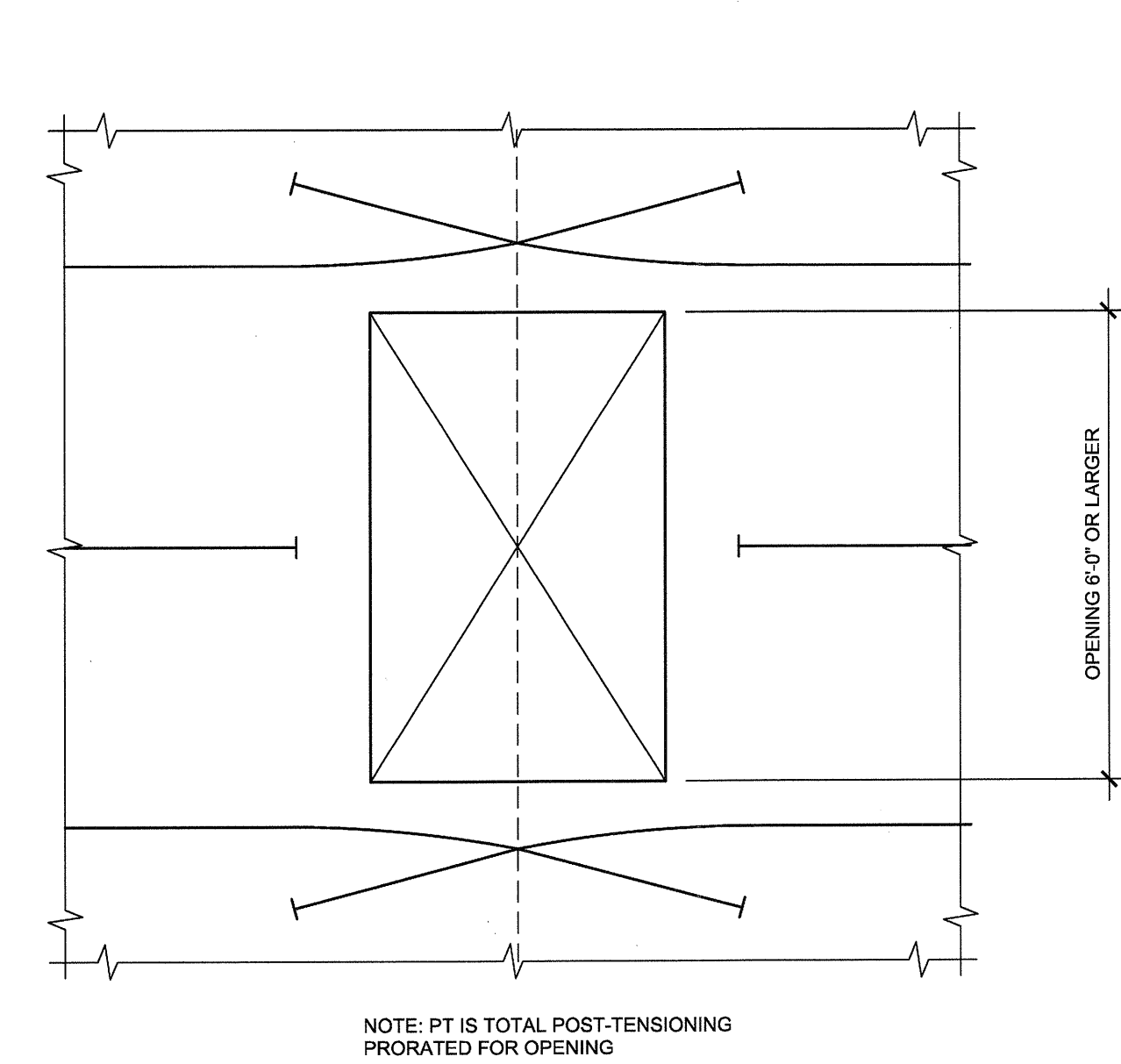
1  
S3.03  
TYPICAL REINFORCEMENT OF TENDON BAND AT SLAB EDGE OR AT INTERMEDIATE STRESSING  
NO SCALE



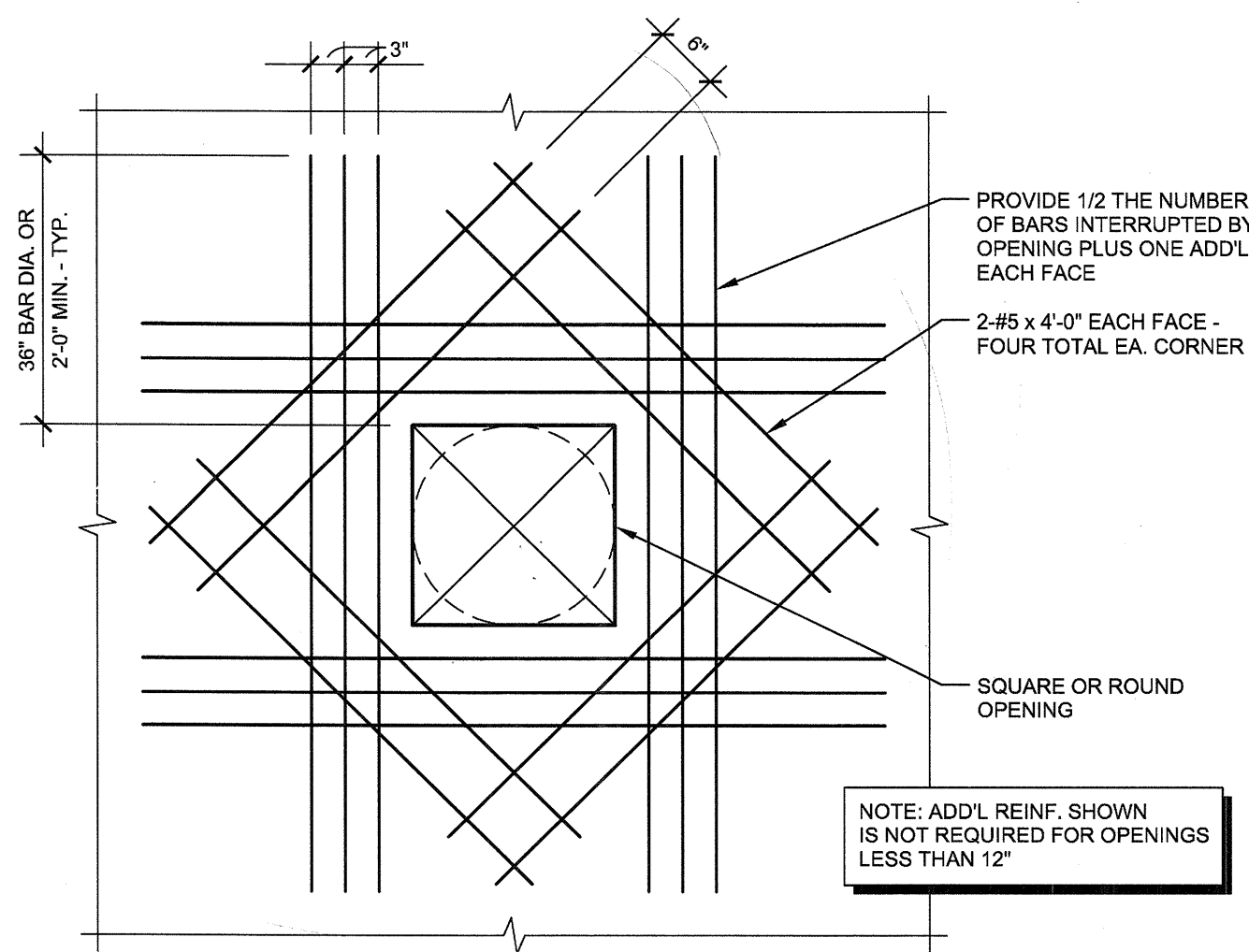
2  
S3.03  
FLARING OF BANDED TENDONS AT SLAB EDGE  
NO SCALE



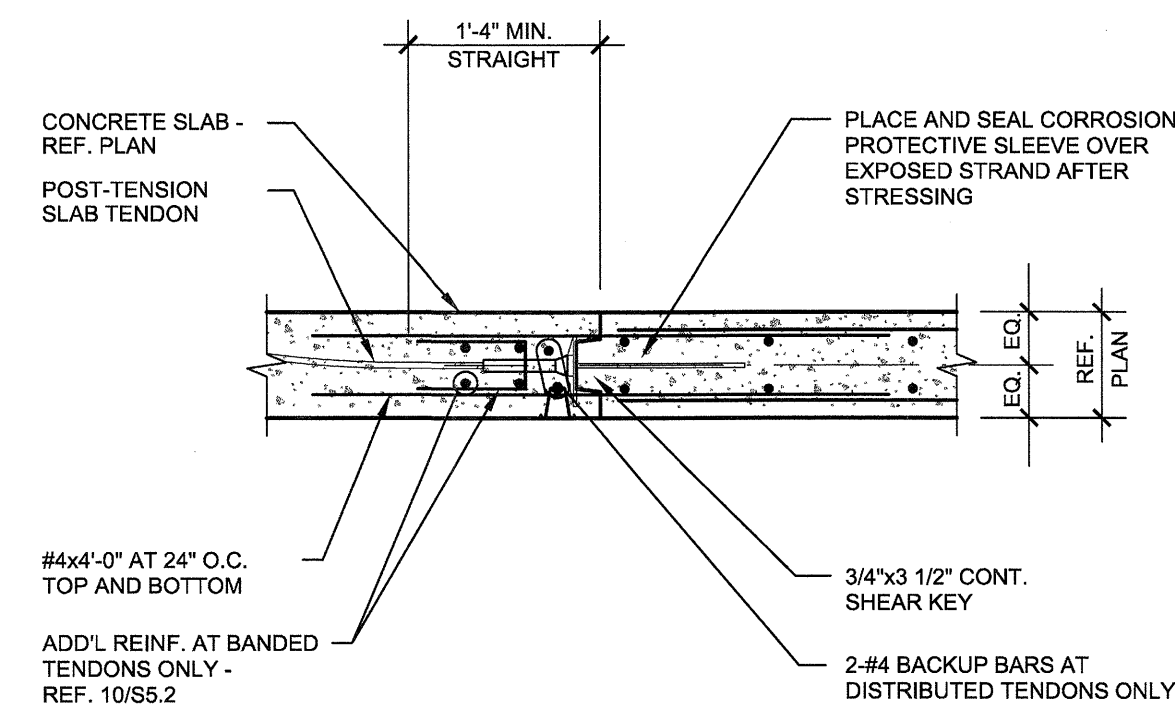
3  
S3.03  
PLACEMENT OF ADDED TENDON  
NO SCALE



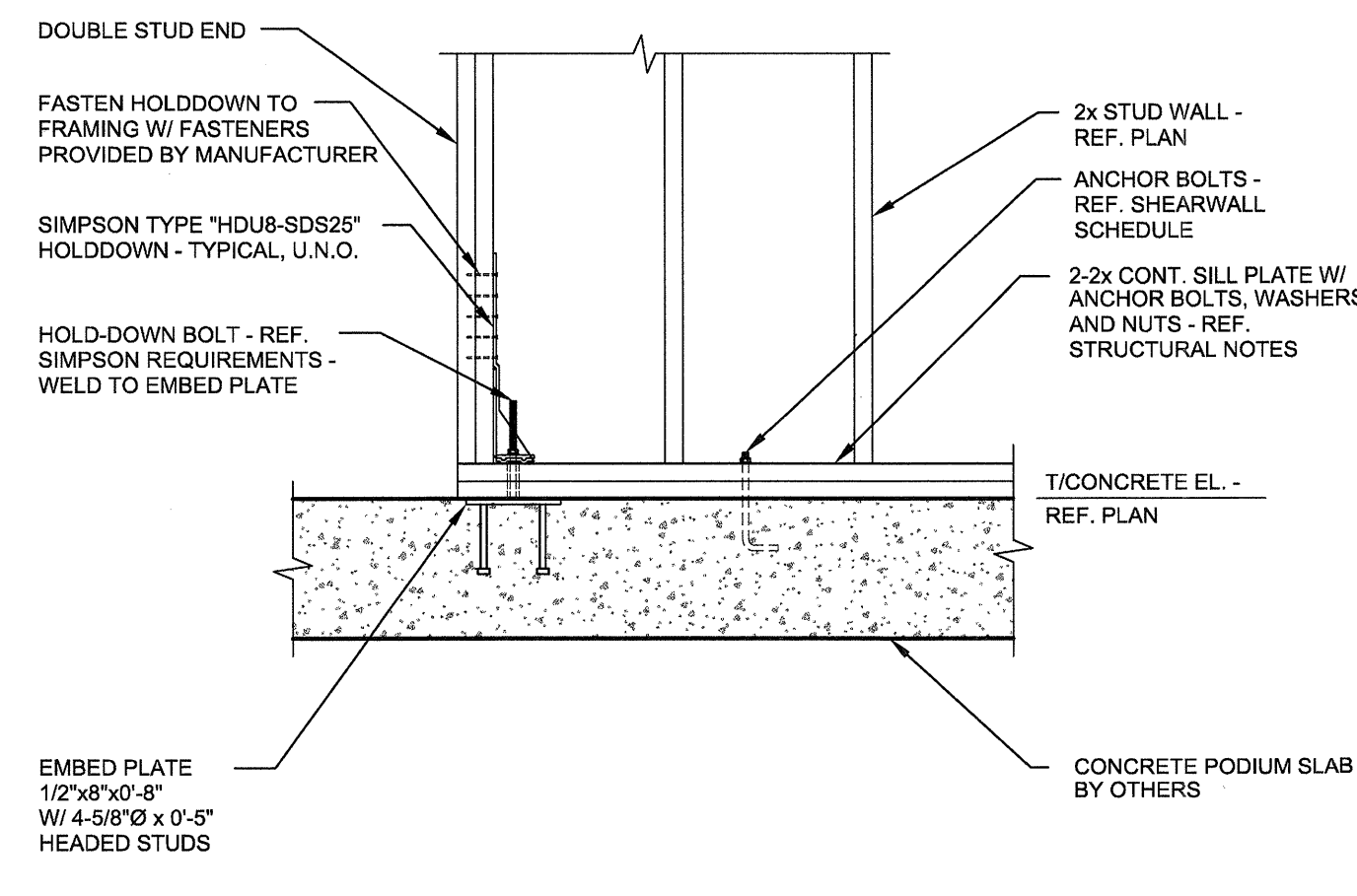
4  
S3.03  
ARRANGEMENT OF TENDONS OPENING 6'-0\"/>



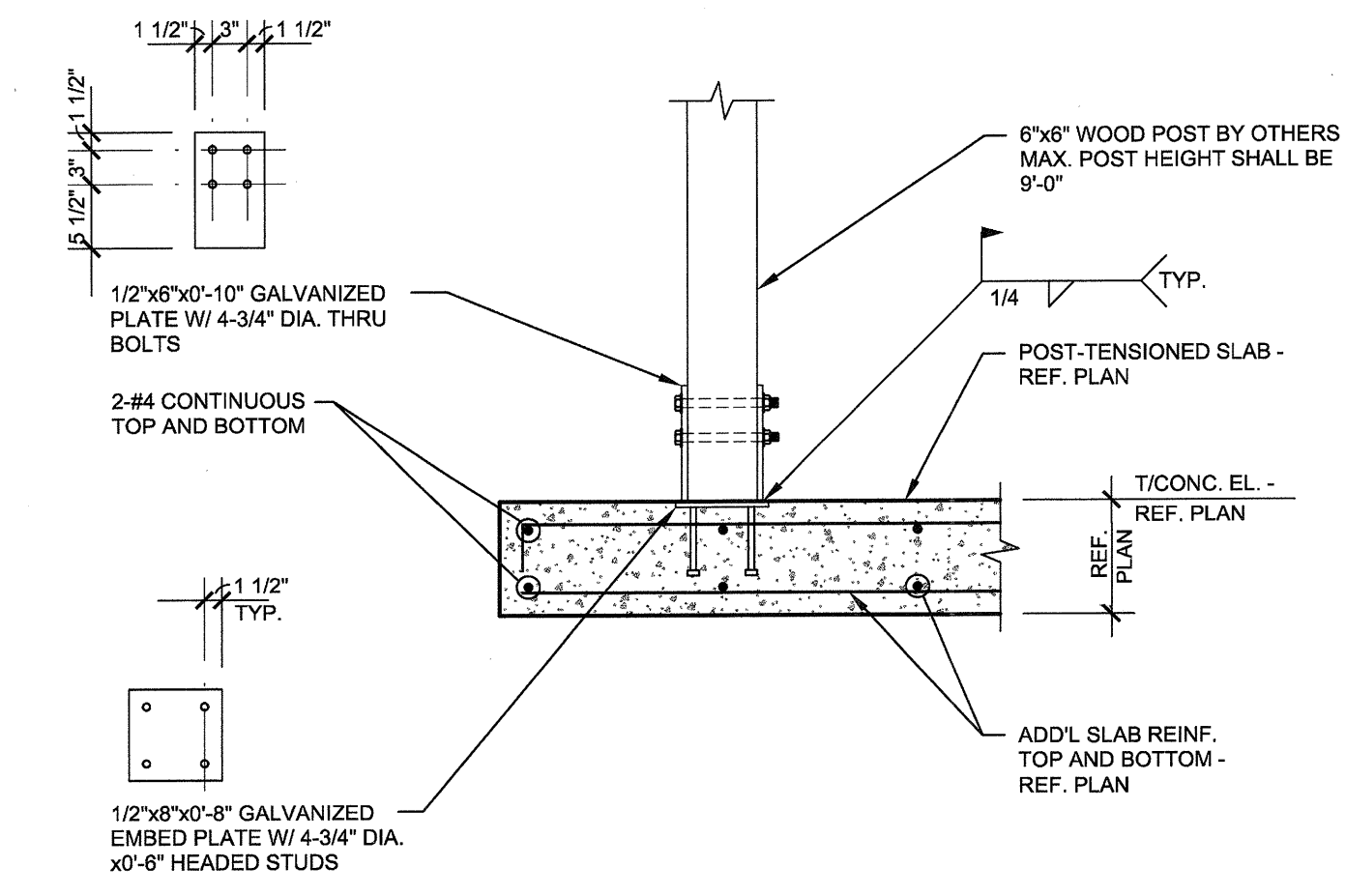
5  
S3.03  
TYPICAL CONCRETE SLAB OPENING DETAIL  
NO SCALE



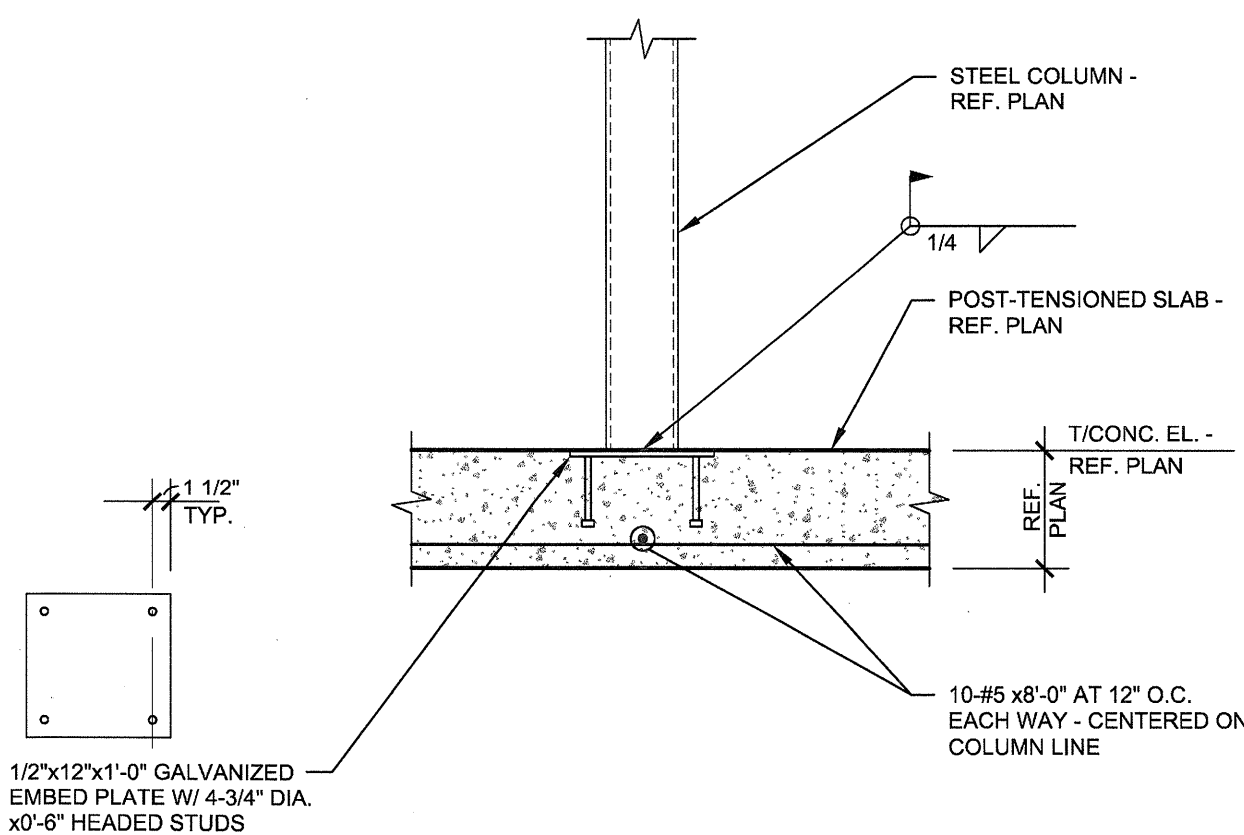
6  
S3.03  
TYPICAL POUR STRIP DETAIL  
NO SCALE



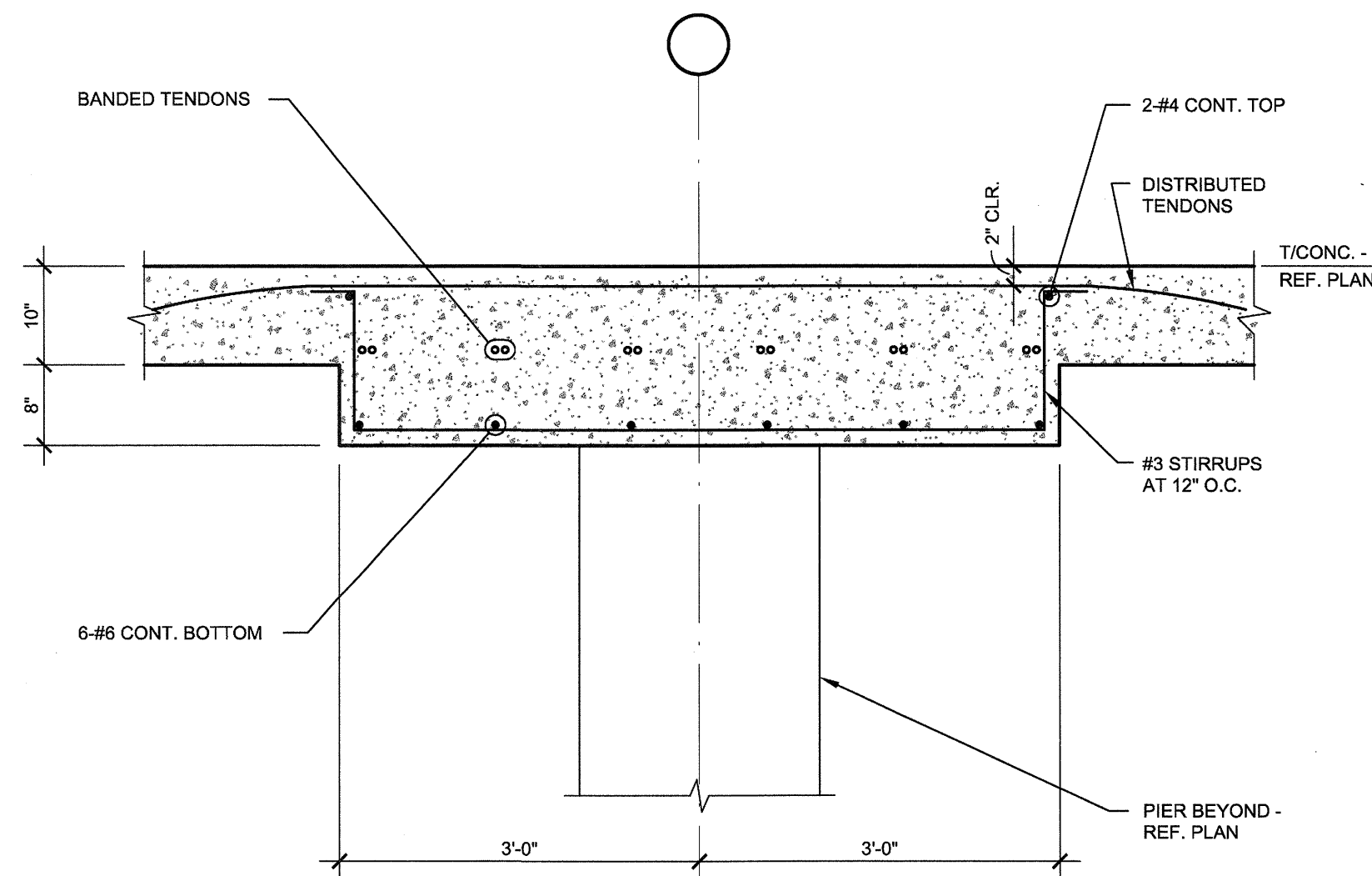
7  
S3.03  
HOLDDOWN DETAIL  
SCALE: 3/4\"/>



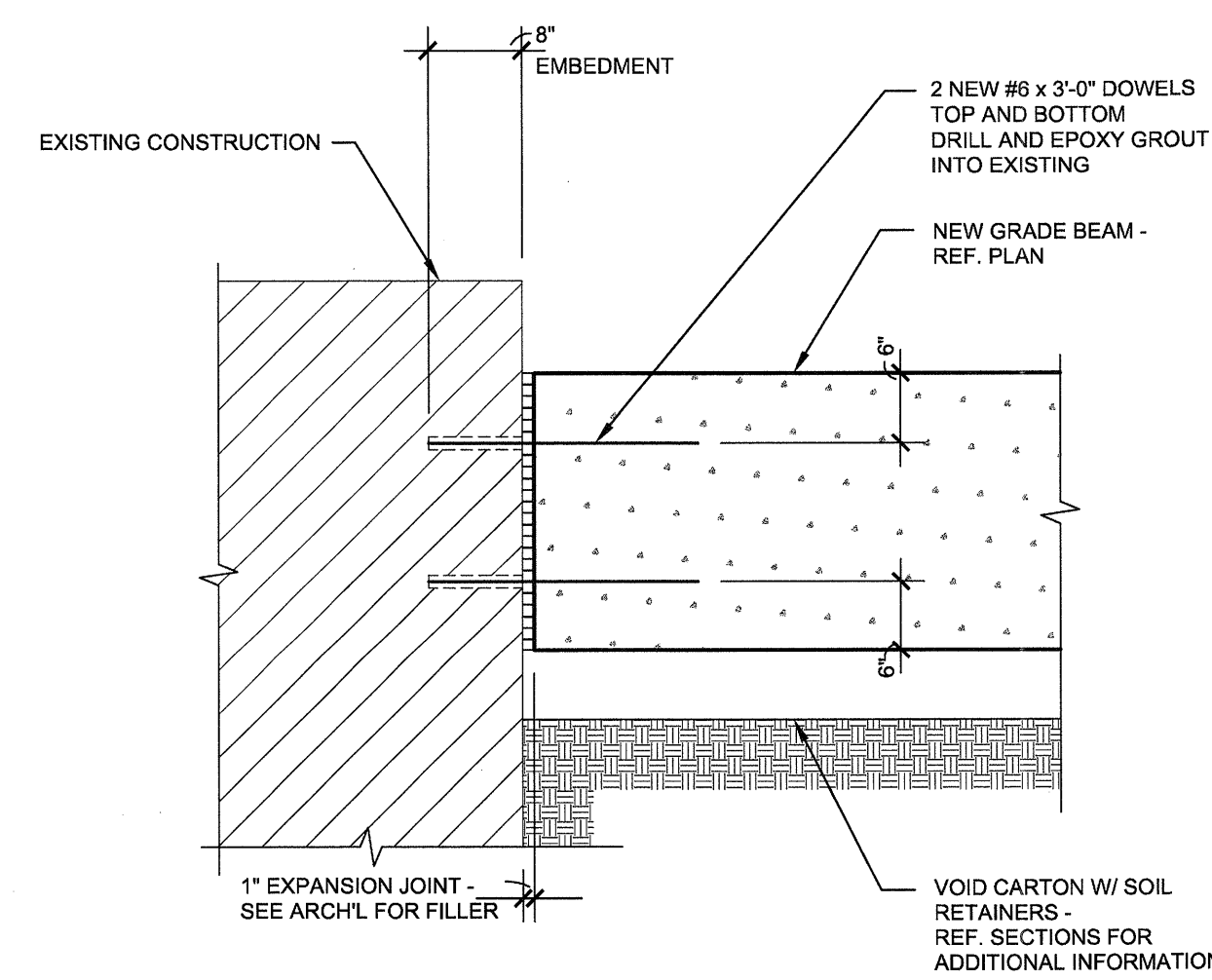
8  
S3.03  
SECTION RFI 160  
NO SCALE



9  
S3.03  
SECTION  
NO SCALE



10  
S3.03  
TYPICAL SECTION AT SLAB BAND  
SCALE: 3/4\"/>



11  
S3.03  
DETAIL  
NO SCALE

REVISIONS	
SLAB ON VOID FOUNDATION	11/18/2011

**KELLER SPRINGS LOFTS**  
 LOFT APARTMENTS IN ADDISON, TEXAS

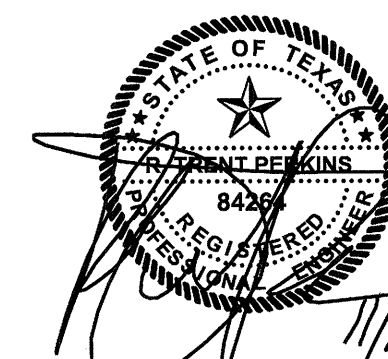
CONSTRUCTION ISSUE  
 10-17-2011

**BGO architects**  
 4144 N. Central Expy., Suite 855  
 Dallas, TX 75204  
 214.520.8878  
 bgoarchitects.com

DATE  
 08-05-2011

PROJECT  
 11129

SHEET NUMBER  
**S3.03**



THE SEAL APPEARING ON THIS DOCUMENT WAS AUTHORIZED BY  
 T. TRENT PERKINS, P.E. 84264

THIS DOCUMENT IS THE RENDERING OF A PROFESSIONAL SERVICE, THE ESSENCE OF WHICH IS THE PROVIDING OF ADVICE, JUDGEMENT, OPINION, OR SIMILAR PROFESSIONAL SKILL.

**P/P/O**  
 PARKIN - PERKINS - OLSEN  
 CONSULTING ENGINEERING, INC.  
 9330 LBJ Freeway Suite 1053  
 Dallas, Texas 75243  
 Tel 214.221.2220 Fax 214.221.2252  
 Project No. 39155  
 Registration No. F-1479