

TYPICAL FASTENING SCHEDULE		
CONNECTION	FASTENING	LOCATION
JOIST TO SILL OR GIRDER	3-8d COMMON NAILS	TOENAIL
BRIDGING TO JOIST	2-8d COMMON NAILS	TOENAIL EACH END
1x6 SUBFLOOR OR LESS TO EACH JOIST	2-8d COMMON NAILS	FACE NAIL
WIDER THAN 1x6 SUBFLOOR TO EACH JOIST	3-8d COMMON NAILS	FACE NAIL
2x SUBFLOOR TO JOIST OR GIRDER	2-16d COMMON NAILS	BLIND AND FACE NAIL
SOLE PLATE TO JOIST OR BLOCKING	16d COMMON NAILS @ 16" O.C.	TYPICAL FACE NAIL
SOLE PLATE TO JOIST OR BLOCKING AT BRACED WALL PANEL	3-16d PER 16"	BRACED WALL PANELS
TOP PLATE TO STUD	2-16d COMMON NAILS	END NAIL
STUD TO SOLE PLATE	4-8d COMMON NAILS	TOENAIL
STUD TO SOLE PLATE (ALTERNATE)	2-16d COMMON NAILS	END NAIL
DOUBLE STUDS	16d @ 24" O.C.	FACE NAIL
DOUBLE TOP PLATES	16d @ 16" O.C.	TYPICAL FACE NAIL
LAP SPLICE AT DOUBLE TOP PLATES (MINIMUM 4'-0" LONG)	8-16d COMMON NAILS @ 4" O.C.	LAP SPLICE
BLOCKING BETWEEN JOISTS OR RAFTERS TO TOP PLATE	3-8d COMMON NAILS	TOENAIL
RIM JOIST TO TOP PLATE	8d COMMON NAILS @ 6" O.C.	TOENAIL
TOP PLATE CORNERS AND INTERSECTIONS	2-16d COMMON NAILS	FACE NAIL
CONTINUOUS HEADER, TWO PIECES	16d COMMON NAILS	16" O.C. ALONG EDGE
CEILING JOISTS TO PLATE	3-8d COMMON NAILS	TOENAIL
CONTINUOUS HEADER TO STUD	4-8d COMMON NAILS	TOENAIL
CEILING JOISTS, LAPS OVER PARTITIONS	3-16d COMMON NAILS	FACE NAIL
CEILING JOISTS TO PARALLEL RAFTERS	3-16d COMMON NAILS	FACE NAIL
RAFTERS TO PLATE	3-8d COMMON NAILS	TOENAIL
1x DIAGONAL BRACE TO EACH STUD AND PLATE	2-8d COMMON NAILS	FACE NAIL
1x8 OR LESS SHEATHING TO EACH BEARING	2-8d COMMON NAILS	FACE NAIL
WIDER THAN 1x8 SHEATHING TO EACH BEARING	3-8d COMMON NAILS	FACE NAIL
BUILT-UP CORNER STUDS	16d COMMON NAILS @ 24" O.C.	24" O.C.
BUILT-UP GIRDER AND BEAMS	20d COMMON NAILS @ 32" O.C.	FACE NAIL AT TOP AND BOTTOM STAGGERED ON OPPOSITE SIDES
	2-20d COMMON NAILS	FACE NAIL AT ENDS AND AT EACH SPLICE
2x PLANKS	16d COMMON NAILS	AT EACH BEARING
COLLAR TIE TO RAFTER	3-10d COMMON NAILS	FACE NAIL
JACK RAFTERS TO HIP	3-10d COMMON NAILS 2-16d COMMON NAILS	TOENAIL FACE NAIL
ROOF RAFTER TO 2x RIDGE BEAM	2-16d COMMON NAILS 2-16d COMMON NAILS	TOENAIL FACE NAIL
JOIST TO BAND JOIST	3-16d COMMON NAILS	FACE NAIL
LEDGER STRIP	3-16d COMMON NAILS	FACE NAIL
WOOD STRUCTURAL PANELS AND PARTICLEBOARD (PANEL THICKNESS)	8d COMMON NAILS (15/32" OR LESS) 10d COMMON NAILS (15/32" OR MORE)	NAILS SPACED 6" O.C. AT PANEL EDGES AND 12" O.C. AT INTERMEDIATE SUPPORTS
PANEL SIDING (PANEL THICKNESS):	6d GALVANIZED CASING NAILS (1/2" OR LESS) 8d GALVANIZED CASING NAILS (5/8" THICK)	NAILS SPACED 3" O.C. AT PANEL EDGES AND 6" O.C. AT INTERMEDIATE SUPPORTS
FIBERBOARD SHEATHING (PANEL THICKNESS)	11 GAGE GALVANIZED ROOFING NAIL (1/2" THICK)	NAILS SPACED 3" O.C. AT PANEL EDGES AND 6" O.C. AT INTERMEDIATE SUPPORTS
INTERIOR PANELING (PANEL THICKNESS)	4d FINISH NAILS (1/4" THICK) 6d FINISH NAILS (3/8" THICK)	NAILS SPACED 6" O.C. AT PANEL EDGES AND 12" O.C. AT INTERMEDIATE SUPPORTS

- NOTES:**
- FASTENINGS INDICATED ABOVE ARE MINIMUMS TO BE PROVIDED UNLESS NOTED OTHERWISE.
 - REFER TO TABLE 2304.9.1 IN THE IBC 2009 BUILDING CODE FOR ADD'L REQUIREMENTS AND ALTERNATE FASTENERS.

1 SCHEDULE
NO SCALE

TYPICAL STEEL LINTEL SCHEDULE FOR OPENINGS IN MASONRY VENEER

MAXIMUM SPAN	SIZE	MINIMUM BEARING
3'-0"	L3 1/2x3 1/2x3/8	8"
5'-0"	L4x4x3/8	8"
8'-0"	L5x3 1/2x3/8 LLV	12"
10'-0"	L6x4x3/8 LLV	12"

- NOTES:**
- CONTACT ENGINEER OF RECORD FOR OPENINGS LARGER THAN 10'-0"
 - ALL LINTELS IN EXTERIOR WALLS SHALL BE PROTECTED WITH PAINT OR HOT DIP GALVANIZING CONFORMING TO ASTM A123.

7 SCHEDULE
NO SCALE

LOAD BEARING STUD WALL SCHEDULE				
LOCATION	LEVEL	GRADE AND SPECIES	SIZE AND SPACING AT 10'-1" PLATE HEIGHTS	SIZE AND SPACING AT PLATE HEIGHTS BETWEEN 10'-1" AND 11'-7"
EXTERIOR WALLS, U.N.O.	4	STUD GRADE DOUGLAS FIR-LARCH (DFL)	2x4 @ 16" O.C.	N/A
	3	STUD GRADE DOUGLAS FIR-LARCH (DFL)	2x4 @ 16" O.C.	N/A
	2	STUD GRADE DOUGLAS FIR-LARCH (DFL)	2x4 @ 12" O.C.	N/A
INTERIOR WALLS, U.N.O.	1	STUD GRADE DOUGLAS FIR-LARCH (DFL)	2-2x4 @ 16" O.C.	2-2x4 @ 12" O.C.
	4	STUD GRADE DOUGLAS FIR-LARCH (DFL)	2x4 @ 16" O.C.	N/A
	3	STUD GRADE DOUGLAS FIR-LARCH (DFL)	2x4 @ 12" O.C.	N/A
PUBLIC CORRIDOR WALLS, U.N.O.	1	STUD GRADE DOUGLAS FIR-LARCH (DFL)	2-2x4 @ 16" O.C.	2-2x4 @ 8" O.C.
	4	STUD GRADE DOUGLAS FIR-LARCH (DFL)	2x4 @ 16" O.C.	N/A
	3	STUD GRADE DOUGLAS FIR-LARCH (DFL)	2x4 @ 16" O.C.	N/A
INTERIOR DOUBLE PARTY WALLS, U.N.O.	2	STUD GRADE DOUGLAS FIR-LARCH (DFL)	2x4 @ 12" O.C.	N/A
	3	STUD GRADE DOUGLAS FIR-LARCH (DFL)	2x4 @ 16" O.C.	N/A
	1	STUD GRADE DOUGLAS FIR-LARCH (DFL)	2-2x4 @ 16" O.C.	2-2x4 @ 12" O.C.

- NOTES:**
- ABOVE SCHEDULE IS APPLICABLE TO LOAD BEARING WALLS ONLY. STUD SIZES AND SPACINGS ARE ENGINEERING MINIMUMS. REFER TO ARCHITECTURAL DRAWINGS FOR ADDITIONAL REQUIREMENTS.
 - COORDINATE ALL PLUMBING WALL LOCATIONS WITH ARCHITECTURAL DRAWINGS. PLUMBING WALLS SHALL BE 2x6 @ 16" O.C., UNLESS NOTED OTHERWISE.
 - ALL BALLOON FRAMED WALLS WITH PLATE HEIGHTS GREATER THAN 13'-0" SHALL BE 2x6 @ 12" O.C.
 - ALL NON-LOAD BEARING WALLS SHALL MEET ARCHITECTURAL REQUIREMENTS. AS A MINIMUM, ALL NON-LOAD BEARING WALLS SHALL BE FRAMED WITH 2x4 STUDS AT 16" O.C.
 - AT CONTRACTOR'S OPTION, ENGINEER FINGER-JOINED STUDS IN THE SAME GRADE AND SPECIES MAY BE USED.

2 SCHEDULE
NO SCALE

SCHEDULE	
MARK	DESCRIPTION
1A	5/8" GYPSUM WALLBOARD APPLIED TO ONE FACE OF WALL AS INDICATED ON PLAN. FASTEN TO WALL FRAMING WITH 6d WALLBOARD NAILS AT 7" O.C. AT PANEL EDGES AND INTERMEDIATE STUDS. FASTEN SHEAR WALL TO FOUNDATION WITH 1/2" DIAMETER ANCHOR BOLTS AT 48" O.C.
2A	5/8" GYPSUM WALLBOARD APPLIED TO BOTH FACES OF WALL IN ACCORDANCE WITH TYPE 1A. FASTEN SHEAR WALL TO FOUNDATION WITH 1/2" DIAMETER ANCHOR BOLTS AT 48" O.C.
1B	5/8" GYPSUM WALLBOARD APPLIED TO ONE FACE OF WALL AS INDICATED ON PLAN. FASTEN TO WALL FRAMING WITH 6d WALLBOARD NAILS AT 4" O.C. AT PANEL EDGES AND INTERMEDIATE STUDS. FASTEN SHEAR WALL TO FOUNDATION WITH 1/2" DIAMETER ANCHOR BOLTS AT 48" O.C.
2B	5/8" GYPSUM WALLBOARD APPLIED TO BOTH FACES OF WALL IN ACCORDANCE WITH TYPE 1B. FASTEN SHEAR WALL TO FOUNDATION WITH 1/2" DIAMETER ANCHOR BOLTS AT 42" O.C.
1C	5/8" GYPSUM WALLBOARD APPLIED TO ONE FACE OF WALL AS INDICATED ON PLAN. FASTEN TO WALL FRAMING WITH 6d WALLBOARD NAILS AT 7" O.C. AT PANEL EDGES AND INTERMEDIATE STUDS INCLUDING BLOCKING. PROVIDE SOLID 2x BLOCKING AT ALL PANEL EDGES. FASTEN SHEAR WALL TO FOUNDATION WITH 1/2" DIAMETER ANCHOR BOLTS AT 48" O.C.
2C	5/8" GYPSUM WALLBOARD APPLIED TO BOTH FACES OF WALL IN ACCORDANCE WITH TYPE 1C. FASTEN SHEAR WALL TO FOUNDATION WITH 1/2" DIAMETER ANCHOR BOLTS AT 36" O.C.
1D	TWO LAYERS OF 5/8" GYPSUM WALLBOARD APPLIED TO ONE FACE OF WALL AS INDICATED ON PLAN. BASE PLY SHALL BE FASTENED TO WALL FRAMING WITH 6d WALLBOARD NAILS AT 9" O.C. AT PANEL EDGES AND INTERMEDIATE STUDS, INCLUDING BLOCKING. FACE PLY SHALL BE FASTENED TO WALL FRAMING WITH 6d WALLBOARD NAILS AT 7" O.C. AT PANEL EDGES AND INTERMEDIATE STUDS. PROVIDE SOLID 2x BLOCKING AT ALL PANEL EDGES. STAGGER PANEL EDGES. FASTEN SHEARWALL TO FOUNDATION WITH 1/2" ANCHOR BOLTS AT 48" O.C.
2D	TWO LAYERS OF 5/8" GYPSUM WALLBOARD APPLIED TO BOTH FACES OF WALL IN ACCORDANCE WITH TYPE 1D. FASTEN SHEARWALL TO FOUNDATION WITH 1/2" ANCHOR BOLTS AT 24" O.C.
1E	1/2" APA RATED SHEATHING APPLIED TO WALL FACE INDICATED ON PLAN. FASTEN TO WALL FRAMING WITH 10d NAILS AT 6" O.C. AT PANEL EDGES AND 12" O.C. AT INTERMEDIATE STUDS. PROVIDE SOLID 2x BLOCKING AT ALL EDGES. FASTEN SHEAR WALL TO FOUNDATION WITH 1/2" DIAMETER ANCHOR BOLTS AT 40" O.C.
2E	1/2" APA RATED SHEATHING APPLIED TO BOTH FACES OF WALL IN ACCORDANCE WITH TYPE 1E. FASTEN SHEAR WALL TO FOUNDATION WITH 1/2" DIAMETER ANCHOR BOLTS AT 20" O.C.
1F	1/2" APA RATED SHEATHING APPLIED TO WALL FACE INDICATED ON PLAN. FASTEN TO WALL FRAMING WITH 10d NAILS AT 4" O.C. AT PANEL EDGES AND 12" O.C. AT INTERMEDIATE STUDS. PROVIDE SOLID 2x BLOCKING AT ALL EDGES. FASTEN SHEAR WALL TO FOUNDATION WITH 1/2" DIAMETER ANCHOR BOLTS AT 24" O.C.
2F	1/2" APA RATED SHEATHING APPLIED TO BOTH FACES OF WALL IN ACCORDANCE WITH TYPE 1F. FASTEN SHEAR WALL TO FOUNDATION WITH 1/2" DIAMETER ANCHOR BOLTS AT 12" O.C.

- NOTES:**
- FOR SHEARWALL TYPE 1A HILTI X-CP 72P8S23 @ 18" O.C. MAY BE USED AT ALL INTERIOR CONDITIONS.
 - FOR SHEARWALL TYPE 2A AND 1B HILTI X-CP 72P8S23 @ 14" O.C. MAY BE USED AT ALL INTERIOR CONDITIONS.
 - FOR SHEARWALL TYPE 2B HILTI X-CP 72P8S23 @ 6" O.C. MAY BE USED AT ALL INTERIOR CONDITIONS.
 - GYPSUM WALL BOARD USED IN SHEARWALLS SHALL MEET OR EXCEED THE REQUIREMENTS OF ASTM C36 AND THE APPLICATION REQUIREMENTS OF ASTM C940.

5 SCHEDULE
NO SCALE

BEAM SUPPORT SCHEDULE	
FLUSH/DROP BEAM SIZE	STUD / COLUMN SUPPORT 1
2-2x10	2-2x STUDS
2-2x12	2-2x STUDS
3 1/2"x9 1/4" PSL	2-2x STUDS
3 1/2"x11 1/4" PSL	3-2x STUDS
3 1/2"x14" PSL	3-2x STUDS
3 1/2"x16" PSL	4-2x STUDS
3 1/2"x18" PSL	5-2x STUDS
5 1/4"x18" PSL	6-2x STUDS

- NOTES:**
- INDICATES NUMBER OF FULL HEIGHT STUDS REQUIRED AT EACH END OF FLUSH OR DROP BEAM.
 - CONTACT ENGINEER OF RECORD FOR OTHER BEAM SIZES.

3 SCHEDULE
NO SCALE

NON-LOAD BEARING HEADER SCHEDULE	
SPAN	HEADER
0' TO 3'-0"	2-2x4
3'-0" TO 6'-0"	2-2x6
6'-0" TO 9'-0"	2-2x8
> 9'-0"	2-2x10

- NOTES:**
- HEADER MATERIAL TO BE #3 S.Y.P., UNLESS NOTED OTHERWISE.
 - USE 1/2" PLYWOOD SPACERS BETWEEN 2x MEMBERS.

4 SCHEDULE
NO SCALE

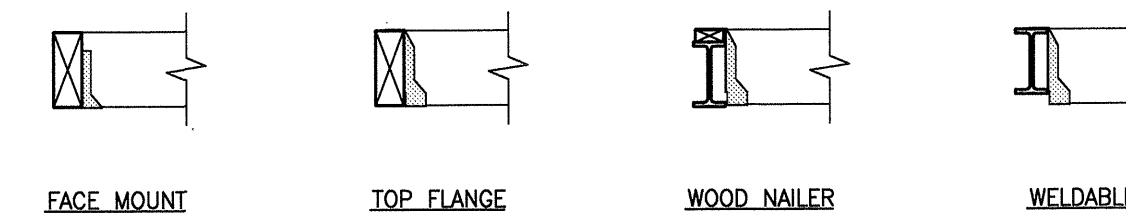
SCHEDULE			
MARK	DESCRIPTION	MARK	DESCRIPTION
1	CS22	5	LTT20B OR STHD8
2	CS18	6	HTT16 OR STHD14
3	CS16 OR 2-CS22	7	HDBA OR PDHB
4	2-CS16	8	HD10A

SHEARWALL ANCHORAGE NOTES:

- PROVIDE A 2-2x MEMBER AT EACH END OF SHEAR WALLS WHERE ANY ANCHOR IS SPECIFIED.
- ANCHORS SHALL BE PLACED ON EACH END OF THE DESIGNATED CORRESPONDING WALL, REF. PLAN.
- FASTEN LTT20B AND HTT16 ANCHORS TO FOUNDATION CONCRETE WITH SIMPSON SSTB16, OR APPROVED SUBSTITUTE. ANCHOR BOLTS. CONTRACTOR MAY USE 5/8" HILTI HIT HY150 ADHESIVE ANCHOR BOLTS (MINIMUM 7 1/2" EMBEDMENT) IN LIEU OF CAST-IN ANCHOR BOLTS.
- FASTEN HDBA, PDHB AND HD10A ANCHORS TO FOUNDATION CONCRETE WITH SIMPSON SSTB28, OR APPROVED SUBSTITUTE. ANCHOR BOLTS. CONTRACTOR MAY USE 7/8" HILTI HIT HY150 ADHESIVE ANCHOR BOLTS (MINIMUM 11 1/4" EMBEDMENT) IN LIEU OF CAST-IN ANCHOR BOLTS.

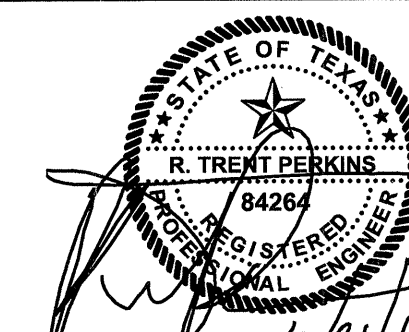
6 SCHEDULE
NO SCALE

BEAM SIZE	INSTALLATION TYPE			
	FACE MOUNT	TOP FLANGE	WOOD NAILER	WELDABLE
2-2x10	HU210-2	HU210-2TF	WNP210-2	WM210-2
2-2x12	UU212-2	HU212-2TF	WNP212-2	WM212-2
3 1/2"x9 1/4" PSL	HHUS410	EGQ3.62-SDS3	EGQ3.62-SDS3	GLTV3.56/9.25
3 1/2"x11 1/4" PSL	HHUS410	EGQ3.62-SDS3	EGQ3.62-SDS3	GLTV3.59
3 1/2"x14" PSL	HHUS410	EGQ3.62-SDS3	EGQ3.62-SDS3	GLTV3.514
3 1/2"x16" PSL	HGUS412	EGQ3.62-SDS3	EGQ3.62-SDS3	GLTV3.516
3 1/2"x18" PSL	HGUS412	EGQ3.62-SDS3	EGQ3.62-SDS3	GLTV3.518
5 1/4"x18" PSL	HGUS5.50/14	EGQ5.50-SDS3	EGQ5.50-SDS3	GLTV5.518



- NOTES:**
- REFERENCE STRUCTURAL NOTES FOR ADDITIONAL INFORMATION.
 - CONTACT ENGINEER OF RECORD FOR OTHER BEAM SIZES.
 - AT END BEAM CONDITIONS, PROVIDE HUCQ412-SDS AND HUCQ610-SDS HANGERS FOR 3 1/2" AND 5 1/4" WIDE BEAMS, RESPECTIVELY.

8 SCHEDULE
NO SCALE



THE SEAL APPEARING ON THIS DOCUMENT WAS AUTHORIZED BY R. TRENT PERKINS, P.E. 84264

THIS DOCUMENT IS THE RENDERING OF A PROFESSIONAL SERVICE, THE ESSENCE OF WHICH IS THE PROVIDING OF ADVICE, JUDGEMENT, OPINION, OR SIMILAR PROFESSIONAL SKILL.



PARKIN - PERKINS - OLSEN
CONSULTING ENGINEERING, INC.
9330 LBJ Freeway Suite 1055
Dallas, Texas 75243
Tel 214.221.2220 Fax 214.221.2252
Project No. 39155
Registration No. F-1479

REVISIONS

NO.	DATE	DESCRIPTION

KELLER SPRINGS LOFTS
LOFT APARTMENTS IN ADDISON, TEXAS

CONSTRUCTION ISSUE
10-17-2011



4144 N. Central Expy., Suite 935
Dallas, TX 75204
214.520.8878
bgoarchitects.com

DATE

08-05-2011

PROJECT

11129

SHEET NUMBER

S1.03