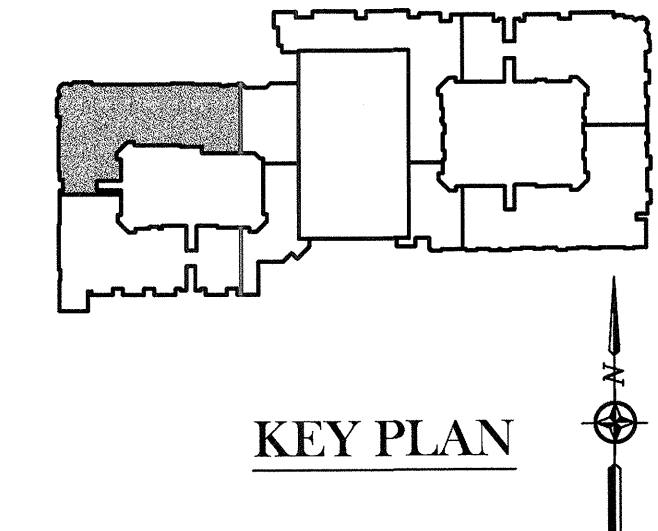
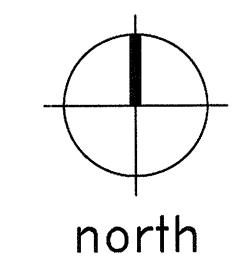


PARTIAL FOUNDATION PLAN
SCALE: 1/8"=1'-0"



THE SEAL APPEARING ON THIS DOCUMENT WAS AUTHORIZED BY
R. TRENT PERKINS, P.E. 84264

STATE OF TEXAS
REGISTERED PROFESSIONAL ENGINEER
4264

THIS DOCUMENT IS THE RENDERING OF A PROFESSIONAL SERVICE, THE ESSENCE OF WHICH IS THE PROVIDING OF ADVICE, JUDGEMENT, OPINION, OR SIMILAR PROFESSIONAL SKILL.

PRO
PARKIN - PERKINS - OLSEN
CONSULTING ENGINEERING, INC.
9330 LBJ Freeway Suite 1055
Dallas, Texas 75243
Tel 214.221.2220 Fax 214.221.2252
Project No. 39155
Registration No. F-1479

- CONCRETE PODIUM DECK PLAN NOTES:
- REFER TO SHEETS S1.01, S1.02, AND S1.03 FOR STRUCTURAL NOTES AND SCHEDULES.
 - REFER TO SHEETS S3.01 - S3.05 FOR TYPICAL POST-TENSIONED SLAB DETAILS.
 - PIERS AT PODIUM DECK SHALL BE 18" DIAMETER CONCRETE PIERS, UNLESS NOTED OTHERWISE. PIERS ARE CENTERED ON GRID LINES, UNLESS NOTED OTHERWISE. REFER TO 1/S3.01 FOR TYPICAL PIER DETAIL.
 - T/CONC. = TOP OF CONCRETE ELEVATIONS. T/CONC. = REF. PLAN, UNLESS NOTED OTHERWISE.
 - PODIUM DECK SHALL BE 10 INCH THICK POST-TENSIONED CONCRETE SLAB, UNLESS NOTED OTHERWISE. DROP CAPS, SLAB BANDS AND BEAMS SHALL BE 18 INCHES THICK, UNLESS NOTED OTHERWISE.
 - COORDINATE FLOOR DEPRESSIONS, DROPS AND DIMENSIONS WITH ARCHITECTURAL DRAWINGS.
 - POST-TENSIONED SLAB SHALL NOT BE CORE DRILLED. COORDINATE THE LOCATION OF ALL SLEEVES, LEAVE-OUTS, OR HOLES WITH ARCHITECTURAL, MECHANICAL, ELECTRICAL, AND PLUMBING DRAWINGS.
 - PROVIDE HILTI HCL-WF 1/2" CAST-IN THREADED ROD ANCHORS AT 8'-0" ON CENTER EACH WAY AND AS REQUIRED FOR THE SUPPORT OF PODIUM SLAB SUPPORTED PLUMBING, DUCTWORK, OR EQUIPMENT.
 - TOP BARS OVER PIERS SHALL BE PLACED WITHIN A WIDTH NOT GREATER THAN THE PIER WIDTH PLUS SIXTEEN (16) INCHES ON EACH SIDE. MAXIMUM BAR SPACING SHALL BE TWELVE (12) INCHES. REFER TO THE TYPICAL DETAILS. TOP BARS OCCUR AT ALL PIERS IN BOTH DIRECTIONS.
 - BOTTOM BARS AT PIER TO BE PLACED OVER PIERS WITH MAXIMUM SPACING EQUAL TO TWELVE (12) INCHES. EXTEND AT LEAST EVERY SECOND BOTTOM BAR TO THE SUPPORT AT EACH END OF THE SPAN.

REVISIONS	
△	SLAB ON VOID FOUNDATION 11/18/2011

KELLER SPRINGS LOFTS

LOFT APARTMENTS IN ADDISON, TEXAS

CONSTRUCTION ISSUE
10-17-2011

BGO architects
4144 N. Central Expy., Suite 855
Dallas, TX 75204
214.520.8878
bgoarchitects.com

DATE
08-05-2011

PROJECT
11129

SHEET NUMBER
S2.11