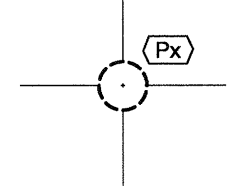
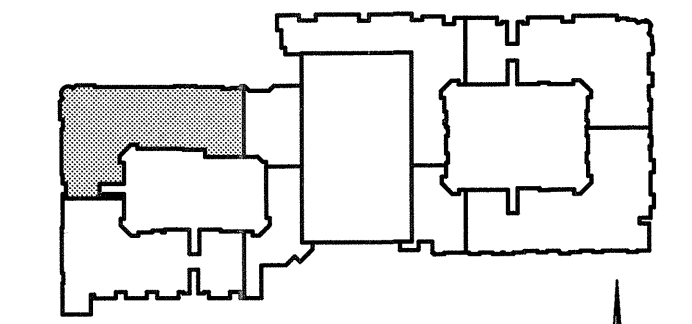
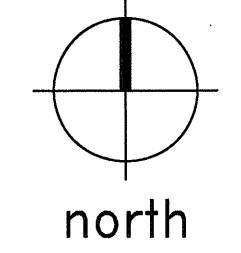


- PLAN NOTES:**
1. REFER TO SHEETS S1.01, S1.02 AND S1.03 FOR STRUCTURAL NOTES AND SCHEDULES.
  2. REFER TO SHEETS S3.01 - S3.04 FOR TYPICAL FOUNDATION DETAILS.
  3. PIERS ARE CENTERED BENEATH GRADE BEAMS, UNLESS NOTED OTHERWISE.
  4. CONCRETE PIERS ARE NOTED THUS ON PLAN (REF. 1/S3.01):

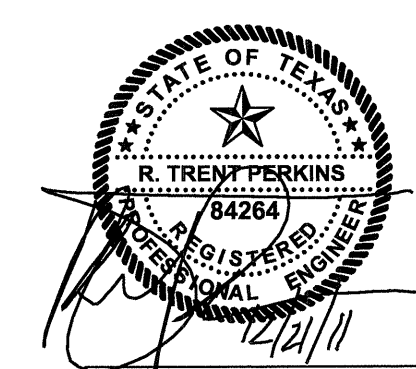


CONCRETE PIER SCHEDULE				
MARK	DIAMETER	REINFORCING	PENETRATION	TOP OF PIER ELEVATION
P1	18" DIA.	6-#7 VERTICAL #3 TIES AT 10" O.C.	5'-0"	639'-9 1/4"
P2				639'-3 1/4"
P3				638'-9 1/4"
P3A				638'-1 1/4"
P4				638'-3 1/4"
P5				637'-9 1/4"
P6				637'-11 1/4"
P6A				637'-3 1/4"
P7				635'-9 1/4"
P8				635'-3 1/4"
P9				634'-3 1/4"
P10				641'-1 1/4"
P11				640'-7 1/4"
P12				640'-1 1/4"
P13				639'-7 1/4"
P14				639'-1 1/4"
P15				634'-9 1/4"
P16				634'-7 1/4"
P17				636'-2"

1  
S2.11P  
PARTIAL  
PIER AND BEAM PLAN  
SCALE: 1/8"=1'-0"



KEY PLAN



THE SEAL APPEARING  
ON THIS DOCUMENT  
WAS AUTHORIZED BY  
R. TRENT PERKINS, P.E. 84264

THIS DOCUMENT IS THE RENDERING OF A PROFESSIONAL  
SERVICE, THE ESSENCE OF WHICH IS THE PROVIDING OF  
ADVICE, JUDGEMENT, OPINION, OR SIMILAR PROFESSIONAL  
SKILL.

**PRO**  
PARKIN - PERKINS - OLSEN  
CONSULTING ENGINEERING, INC.  
9330 LBJ Freeway Suite 1055  
Dallas, Texas 75243  
Tel 214.221.2220 Fax 214.221.2252  
Project No. 39155  
Registration No. F-1479

REVISIONS	
△ SLAB ON VOID FOUNDATION	11/18/2011
△ SLAB ON GRADE FOR METER BANK	12/21/2011

**KELLER SPRINGS LOFTS**  
LOFT APARTMENTS IN ADDISON, TEXAS

CONSTRUCTION ISSUE  
10-17-2011

**BGO**  
architects  
4144 N. Central Expy.,  
Suite 655  
Dallas, TX 75204  
214.520.8878  
bgoarchitects.com

DATE  
08-05-2011

PROJECT  
11129

SHEET NUMBER

**S2.11P**