

REVISIONS

△	SLAB ON VOID FOUNDATION	11/18/2011
---	-------------------------	------------

KELLER SPRINGS LOFTS
 LOFT APARTMENTS IN ADDISON, TEXAS

CONSTRUCTION ISSUE
 10-17-2011

BGO architects
 4144 N. Central Expy., Suite 855
 Dallas, TX 75204
 214.520.8878
 bgoarchitects.com

DATE
 08-05-2011

PROJECT
 11129

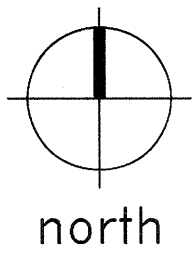
SHEET NUMBER
S2.12P

CONCRETE PIER SCHEDULE

MARK	DIAMETER	REINFORCING	PENETRATION	TOP OF PIER ELEVATION
P1	18" DIA.	6-#7 VERTICAL #3 TIES AT 10" O.C.	5'-0"	639'-9 1/4"
P2				639'-3 1/4"
P3				638'-9 1/4"
P3A				638'-1 1/4"
P4				638'-3 1/4"
P5				637'-9 1/4"
P6				637'-11 1/4"
P6A				637'-3 1/4"
P7				635'-9 1/4"
P8				635'-3 1/4"
P9				634'-3 1/4"

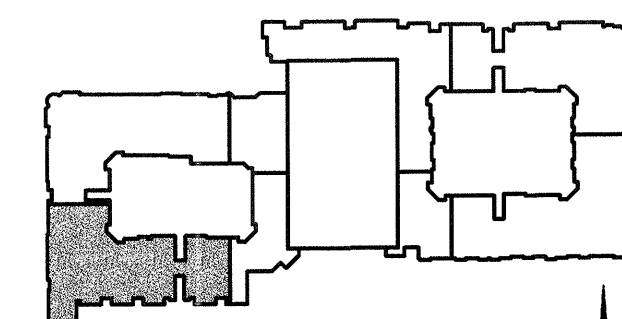
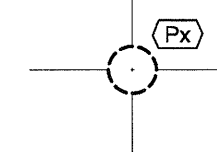
P10				641'-1 1/4"
P11				640'-7 1/4"
P12				640'-1 1/4"
P13				639'-7 1/4"
P14				639'-1 1/4"
P15				634'-9 1/4"
P16				634'-7 1/4"
P17				636'-2"

PARTIAL PIER AND BEAM PLAN
 SCALE: 1/8"=1'-0"

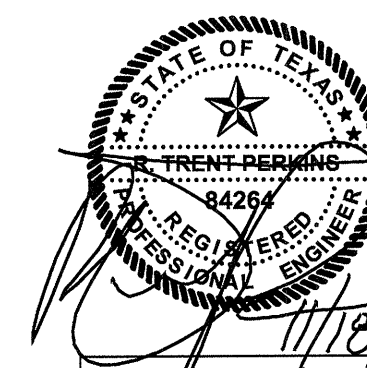


PLAN NOTES:

- REFER TO SHEETS S1.01, S1.02 AND S1.03 FOR STRUCTURAL NOTES AND SCHEDULES.
- REFER TO SHEETS S3.01 - S3.04 FOR TYPICAL FOUNDATION DETAILS.
- PIERS ARE CENTERED BENEATH GRADE BEAMS, UNLESS NOTED OTHERWISE.
- CONCRETE PIERS ARE NOTED THUS ON PLAN (REF. 1/S3.01):



KEY PLAN



THE SEAL APPEARING ON THIS DOCUMENT WAS AUTHORIZED BY R. TRENT PERKINS, P.E. 84264

THIS DOCUMENT IS THE RENDERING OF A PROFESSIONAL SERVICE, THE ESSENCE OF WHICH IS THE PROVIDING OF ADVICE, JUDGEMENT, OPINION, OR SIMILAR PROFESSIONAL SKILL.



PARKIN - PERKINS - OLSEN CONSULTING ENGINEERING, INC.
 9330 LBJ Freeway Suite 1055
 Dallas, Texas 75243
 Tel 214.221.2220 Fax 214.221.2352
 Project No. 39155
 Registration No. F-1479