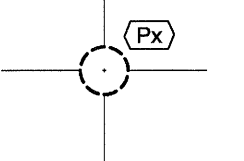


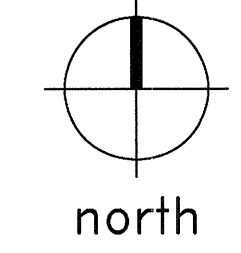
CONCRETE PIER SCHEDULE

MARK	DIAMETER	REINFORCING	PENETRATION	TOP OF PIER ELEVATION
P1	18" DIA.	6-#7 VERTICAL #3 TIES AT 10" O.C.	5'-0"	639'-9 1/4"
P2				639'-3 1/4"
P3				638'-9 1/4"
P3A				638'-1 1/4"
P4				638'-3 1/4"
P5				637'-9 1/4"
P6				637'-11 1/4"
P6A				637'-3 1/4"
P7				635'-9 1/4"
P8				635'-3 1/4"
P9				634'-3 1/4"
P10				641'-1 1/4"
P11				640'-7 1/4"
P12				640'-1 1/4"
P13				639'-7 1/4"
P14				639'-1 1/4"
P15				634'-9 1/4"
P16				634'-7 1/4"
P17				636'-2"

- PLAN NOTES:**
1. REFER TO SHEETS S1.01, S1.02 AND S1.03 FOR STRUCTURAL NOTES AND SCHEDULES.
 2. REFER TO SHEETS S3.01 - S3.04 FOR TYPICAL FOUNDATION DETAILS.
 3. PIERS ARE CENTERED BENEATH GRADE BEAMS, UNLESS NOTED OTHERWISE.
 4. CONCRETE PIERS ARE NOTED THUS ON PLAN (REF. 1/S3.01):



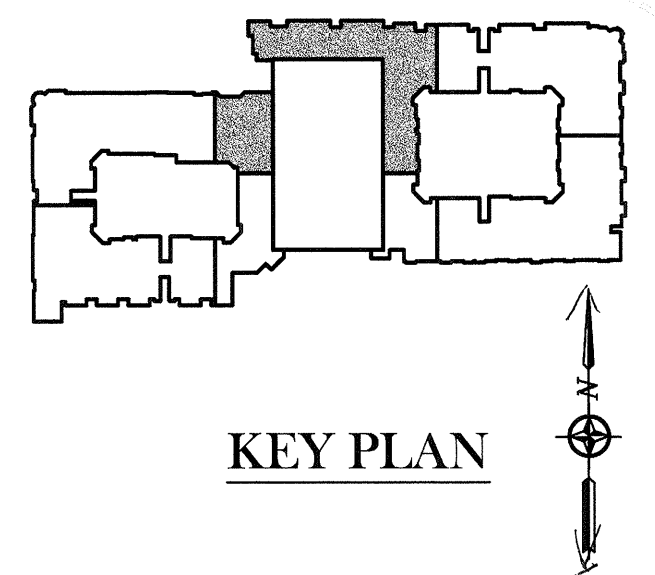
PARTIAL PIER AND BEAM PLAN
SCALE: 1/8" = 1'-0"



THE SEAL APPEARING ON THIS DOCUMENT WAS AUTHORIZED BY
TRENT PERKINS, P.E. 84264

PARKIN - PERKINS - OLSEN
CONSULTING ENGINEERING, INC.
9330 LBJ Freeway Suite 1055
Dallas, Texas 75243
Tel 214.221.2220 Fax 214.221.2252
Project No. 39155
Registration No. F-1479

THIS DOCUMENT IS THE RENDERING OF A PROFESSIONAL SERVICE, THE ESSENCE OF WHICH IS THE PROVIDING OF ADVICE, JUDGEMENT, OPINION, OR SIMILAR PROFESSIONAL SKILL.



REVISIONS

△	SLAB ON VOID FOUNDATION.	11/18/2011
---	--------------------------	------------

KELLER SPRINGS LOFTS

LOFT APARTMENTS IN ADDISON, TEXAS

CONSTRUCTION ISSUE
10-17-2011

BGO
architects
4144 N. Central Expy.,
Suite 855
Dallas, TX 75204
214.520.8878
bgoarchitects.com

DATE
08-05-2011

PROJECT
11129

SHEET NUMBER
S2.13P