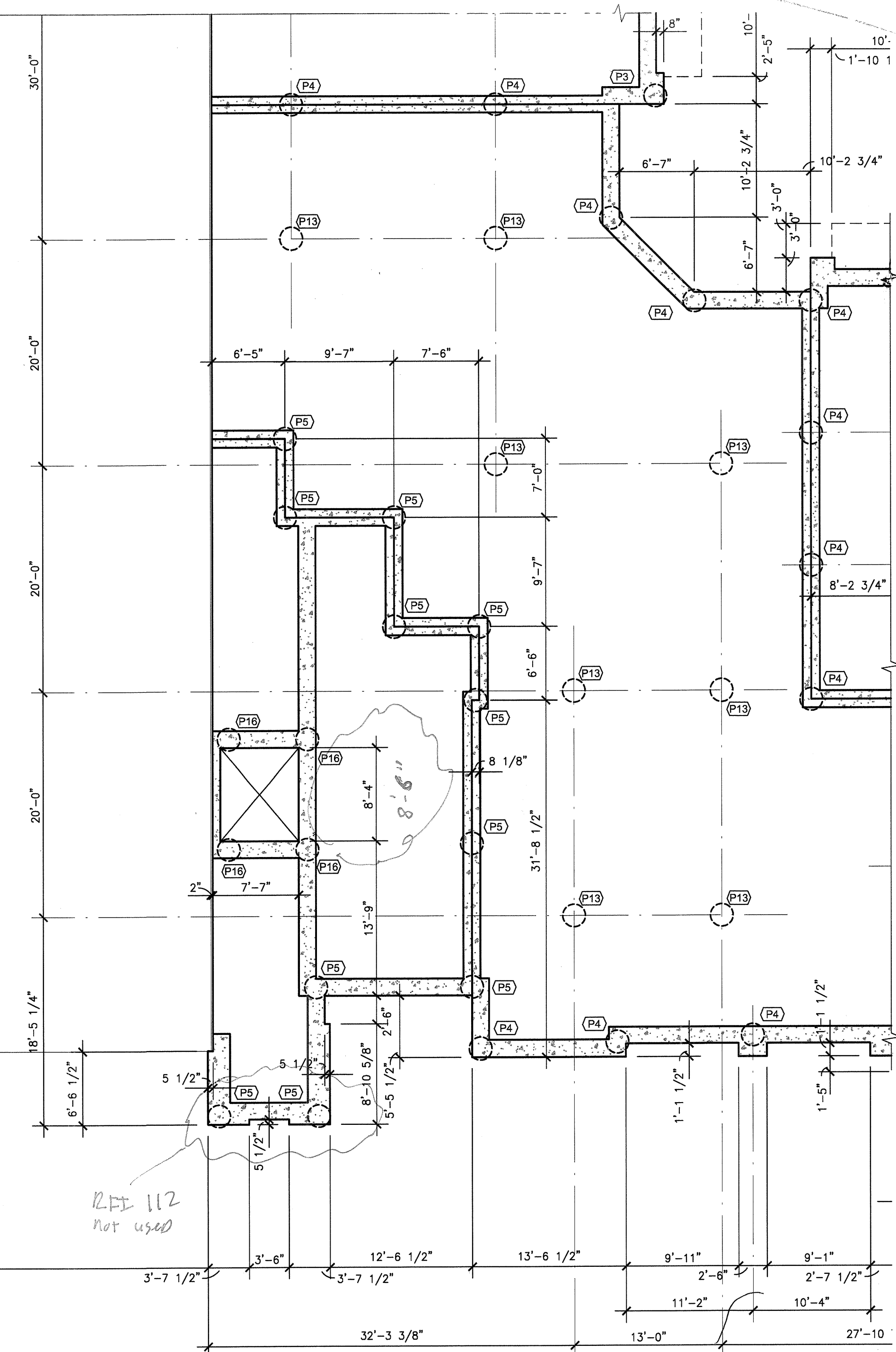
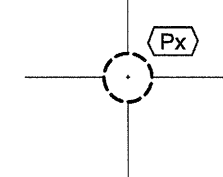


CONCRETE PIER SCHEDULE				
MARK	DIAMETER	REINFORCING	PENETRATION	TOP OF PIER ELEVATION
P1	18" DIA.	6-#7 VERTICAL #3 TIES AT 10" O.C.	5'-0"	639'-9 1/4"
P2				639'-3 1/4"
P3				638'-9 1/4"
P3A				638'-1 1/4"
P4				638'-3 1/4"
P5				637'-9 1/4"
P6				637'-11 1/4"
P6A				637'-3 1/4"
P7				635'-9 1/4"
P8				635'-3 1/4"
P9				634'-3 1/4"
P10				641'-1 1/4"
P11				640'-7 1/4"
P12				640'-1 1/4"
P13				639'-7 1/4"
P14				639'-1 1/4"
P15				634'-9 1/4"
P16				634'-7 1/4"
P17				636'-2"

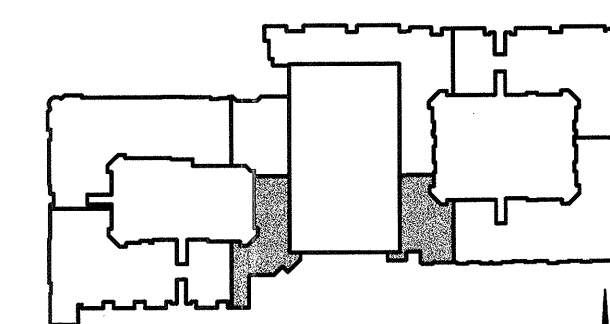
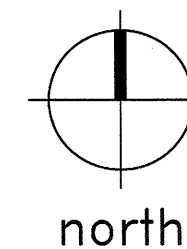


PLAN NOTES:

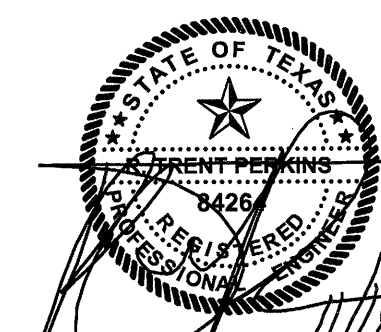
1. REFER TO SHEETS S1.01, S1.02 AND S1.03 FOR STRUCTURAL NOTES AND SCHEDULES.
2. REFER TO SHEETS S3.01 - S3.04 FOR TYPICAL FOUNDATION DETAILS.
3. PIERS ARE CENTERED BENEATH GRADE BEAMS, UNLESS NOTED OTHERWISE.
4. CONCRETE PIERS ARE NOTED THUS ON PLAN (REF. 1/S3.01):



1
PARTIAL
PIER AND BEAM PLAN
SCALE: 1/8"=1'-0"



KEY PLAN



THE SEAL APPEARING
ON THIS DOCUMENT
WAS AUTHORIZED BY
R. TRENT PERKINS, P.E. 84264

THIS DOCUMENT IS THE RENDERING OF A PROFESSIONAL
SERVICE, THE ESSENCE OF WHICH IS THE PROVIDING OF
ADVICE, JUDGEMENT, OPINION, OR SIMILAR PROFESSIONAL
SKILL.



PARKIN - PERKINS - OLSEN
CONSULTING ENGINEERING, INC.
9330 LBJ Freeway Suite 1055
Dallas, Texas 75243
Tel 214.221.2220 Fax 214.221.2252
Project No. 39155
Registration No. F-1479

REVISIONS

△ SLAB ON VOID FOUNDATION. 11/18/2011

KELLER SPRINGS LOFTS

LOFT APARTMENTS IN ADDISON, TEXAS

CONSTRUCTION ISSUE
10-17-2011

BGO
architects

4144 N. Central Expy.,
Suite 855
Dallas, TX 75204
214.520.8878
bgoarchitects.com

DATE
08-05-2011

PROJECT
11129

SHEET NUMBER
S2.14P