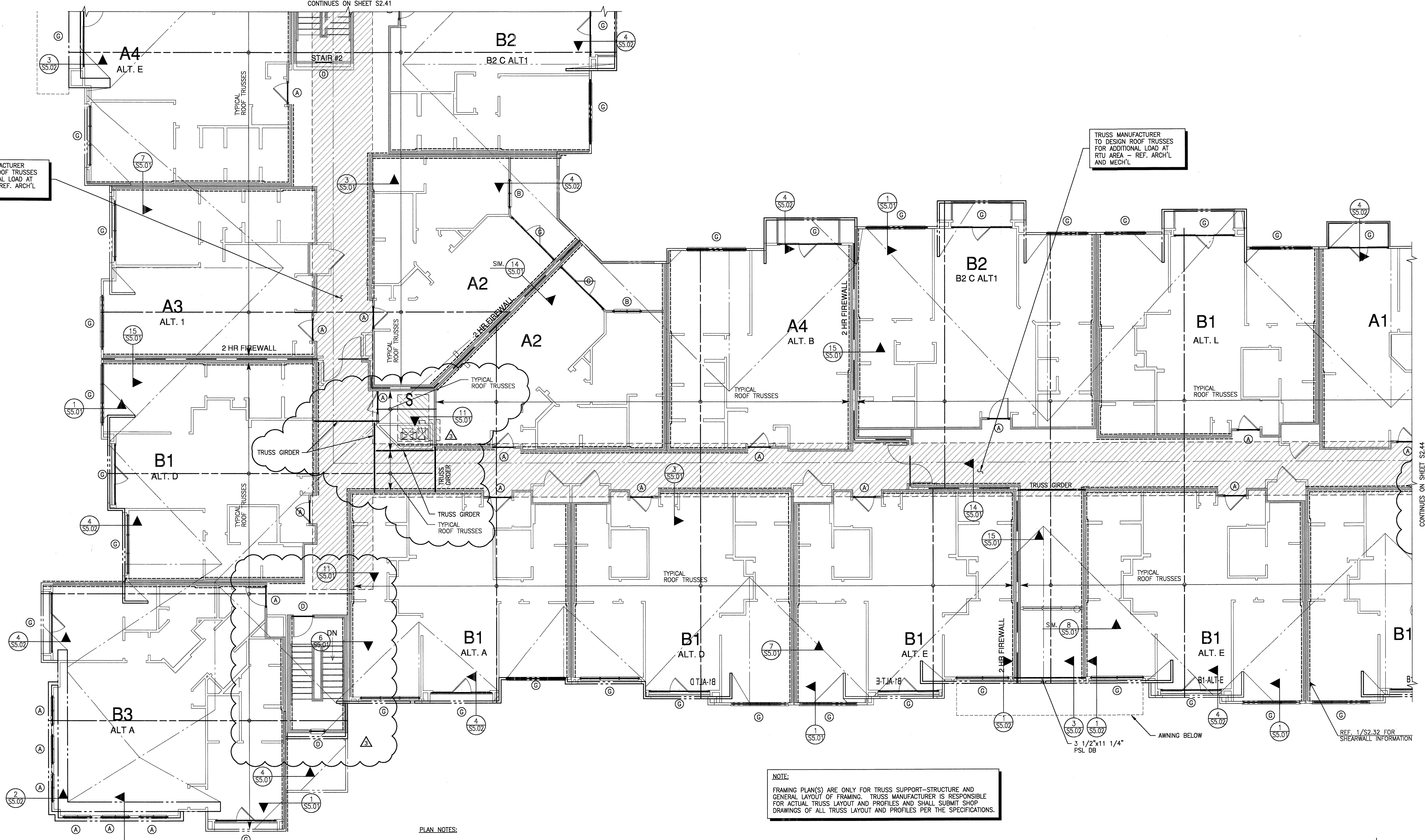


CONTINUES ON SHEET S2.41

TRUSS MANUFACTURER TO DESIGN ROOF TRUSSES FOR ADDITIONAL LOAD AT RTU AREA - REF. ARCH'L AND MECH'L

TRUSS MANUFACTURER TO DESIGN ROOF TRUSSES FOR ADDITIONAL LOAD AT RTU AREA - REF. ARCH'L AND MECH'L



CONTINUES ON SHEET S2.44

NOTE:
FRAMING PLAN(S) ARE ONLY FOR TRUSS SUPPORT-STRUCTURE AND GENERAL LAYOUT OF FRAMING. TRUSS MANUFACTURER IS RESPONSIBLE FOR ACTUAL TRUSS LAYOUT AND PROFILES AND SHALL SUBMIT SHOP DRAWINGS OF ALL TRUSS LAYOUT AND PROFILES PER THE SPECIFICATIONS.

- PLAN NOTES:**
- REFER TO SHEETS 1.01 - S1.03 FOR STRUCTURAL NOTES AND SCHEDULES.
 - REFER TO SHEETS S5.01 AND S5.02 FOR TYPICAL FRAMING DETAILS.
 - ALL ROOF TRUSSES SHALL BE SPACED AT 24" O.C., UNLESS NOTED OTHERWISE. PROVIDE TRUSS BRIDGING IN ACCORDANCE WITH THE MANUFACTURER'S RECOMMENDATIONS. COORDINATE HEIGHT AND CONFIGURATIONS WITH ARCHITECTURAL DRAWINGS.
 - ALL WOOD BEAMS ARE LOAD BEARING HEADERS, UNLESS NOTED OTHERWISE. (DB = DROP BEAM, FB = FLUSH BEAM). REFER TO SCHEDULES FOR SUPPORT REQUIREMENTS AT HEADERS AND BEAMS.
 - ALL WALLS SHOWN ARE BELOW THIS LEVEL, UNLESS NOTED OTHERWISE.
 - INDICATES ASSUMED INTERIOR LOAD BEARING WALLS BELOW THIS LEVEL. ALL EXTERIOR WALLS SHALL BE LOAD BEARING.
 - POST/STUD COLUMNS SHALL BE CONTINUOUS TO FOUNDATION. CONNECT WOOD BEAMS AND COLUMNS WITH SIMPSON TYPE "ACE" POST CAPS OR APPROVED SUBSTITUTE.

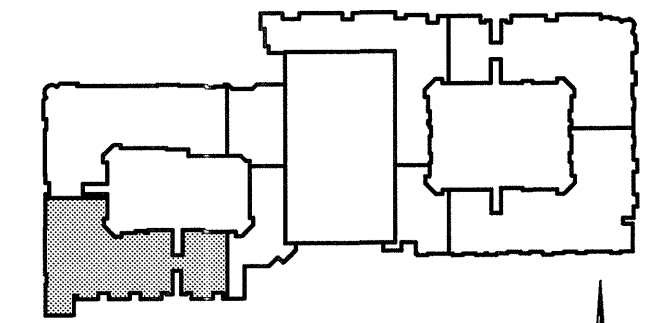
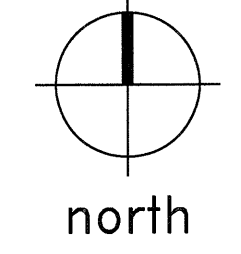
- SHEARWALL NOTES**
- ALL SHEARWALLS INDICATED ON PLAN ARE LOCATED AT FLOOR BELOW.
 - ALL SHEARWALLS ARE INDICATED ON PLAN TYPICAL, UNLESS NOTED OTHERWISE. REFERENCE SHEARWALL SCHEDULE S/51.03.
 - REFERENCE 3/S4.02 AND 4/S4.02 FOR TYPICAL SHEARWALL ELEVATIONS.

HEADER SCHEDULE			
MARK	SIZE	STUD/COLUMN AT LEVEL 1	STUD/COLUMN AT LEVELS 2,3,4
(A)	2-2x8	3-2x STUDS	2-2x STUDS
(B)	2-2x10	3-2x STUDS	2-2x STUDS
(C)	2-2x12	3-2x STUDS	2-2x STUDS
(D)	3-2x8	4-2x STUDS	3-2x STUDS
(E)	3-2x10	4-2x STUDS	3-2x STUDS
(F)	3-2x12	4-2x STUDS	3-2x STUDS
(G)	3 1/2"x9 1/4" PSL	4-2x STUDS	3-2x STUDS
(H)	3 1/2"x11 1/4" PSL	5-2x STUDS	4-2x STUDS
(I)	3 1/2"x14" PSL	5-2x STUDS	4-2x STUDS
(K)	3 1/2"x16" PSL	6-2x STUDS	5-2x STUDS

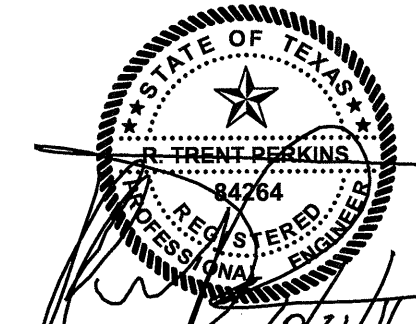
- NOTES:**
- INDICATES NUMBER OF FULL HEIGHT STUDS REQUIRED AT EACH END OF HEADER.
 - REF. TYPICAL WALL OPENING ELEVATIONS FOR NUMBER OF REQUIRED TRIM STUDS.

2 SCHEDULE NO SCALE

1 PARTIAL ROOF FRAMING PLAN SCALE: 1/8"=1'-0"



KEY PLAN



THE SEAL APPEARING ON THIS DOCUMENT WAS AUTHORIZED BY R. TRENT PERKINS, P.E. 84264

THIS DOCUMENT IS THE RENDERING OF A PROFESSIONAL SERVICE, THE ESSENCE OF WHICH IS THE PROVIDING OF ADVICE, JUDGEMENT, OPINION, OR SIMILAR PROFESSIONAL SKILL.

PRO
PARKIN - PERKINS - OLSEN
CONSULTING ENGINEERING, INC.
9330 LBJ Freeway Suite 1055
Dallas, Texas 75243
Tel 214.221.2220 Fax 214.221.2252
Project No. 39155
Registration No. F-1479

REVISIONS
COORDINATION
10-17-2011

KELLER SPRINGS LOFTS
LOFT APARTMENTS IN ADDISON, TEXAS

CONSTRUCTION ISSUE
10-17-2011

BGO architects
4144 N. Central Expy., Suite 855
Dallas, TX 75204
214.520.8878
bgoarchitects.com

DATE
08-05-2011

PROJECT
11129

SHEET NUMBER

S2.42