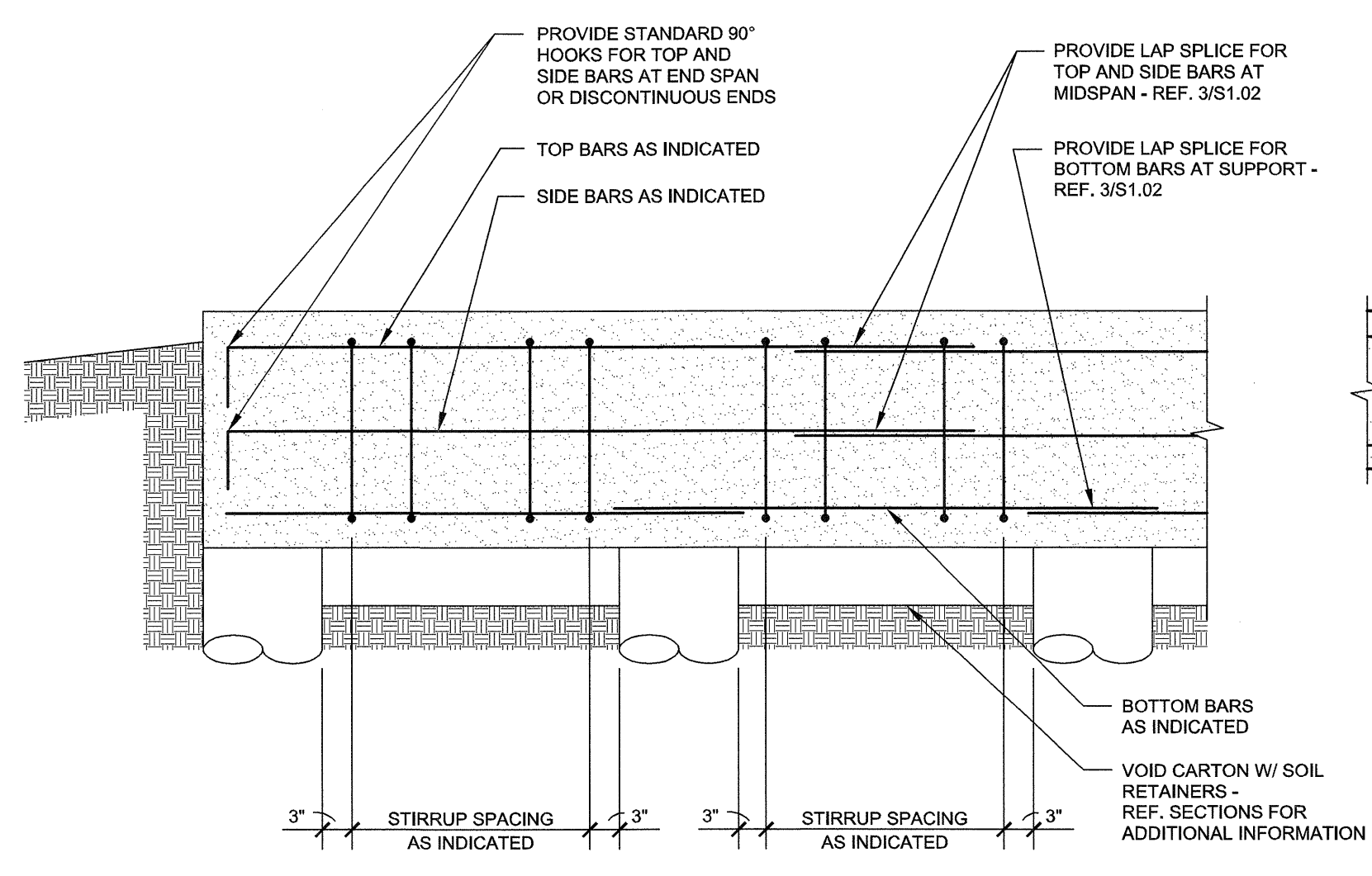
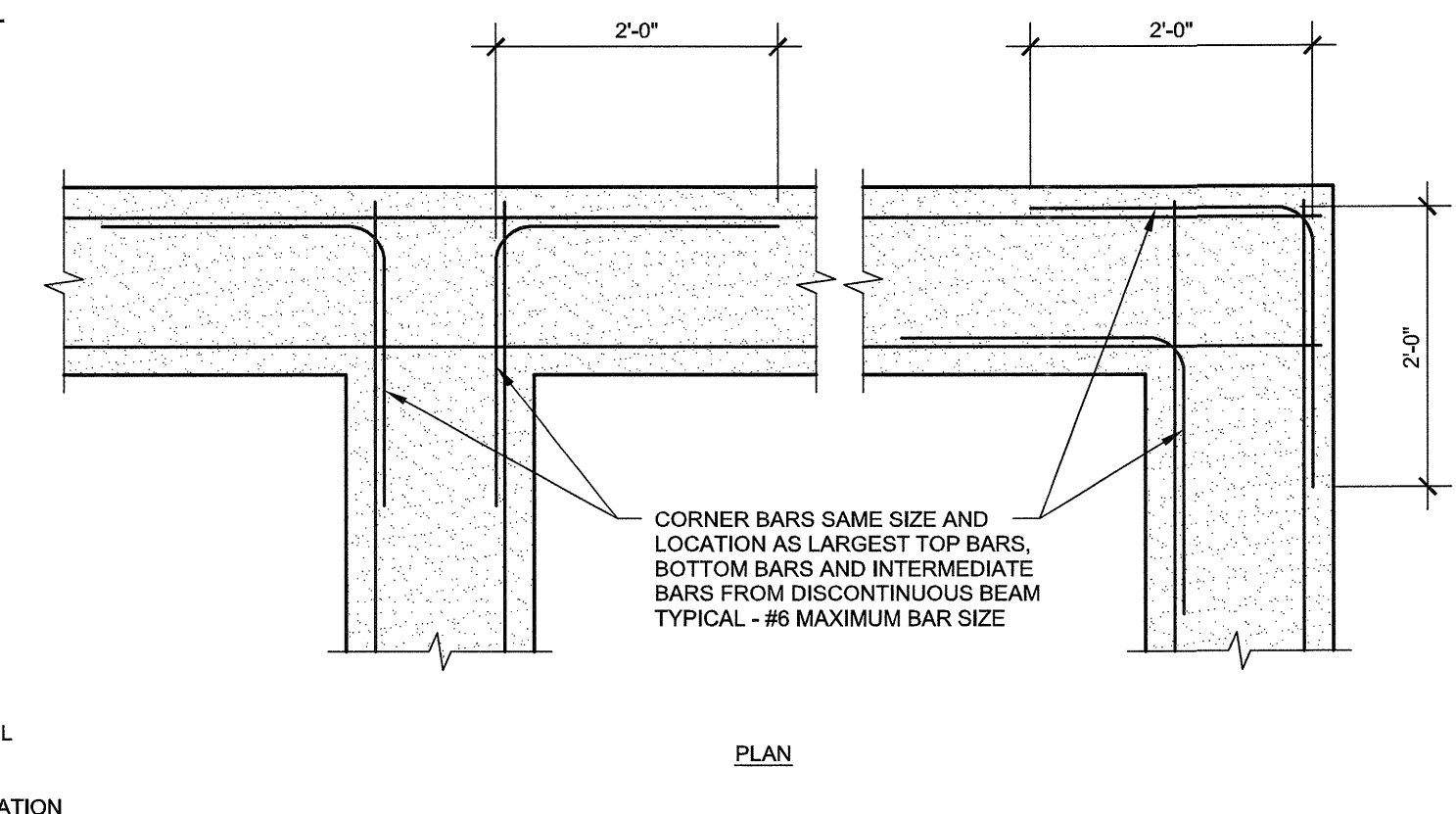


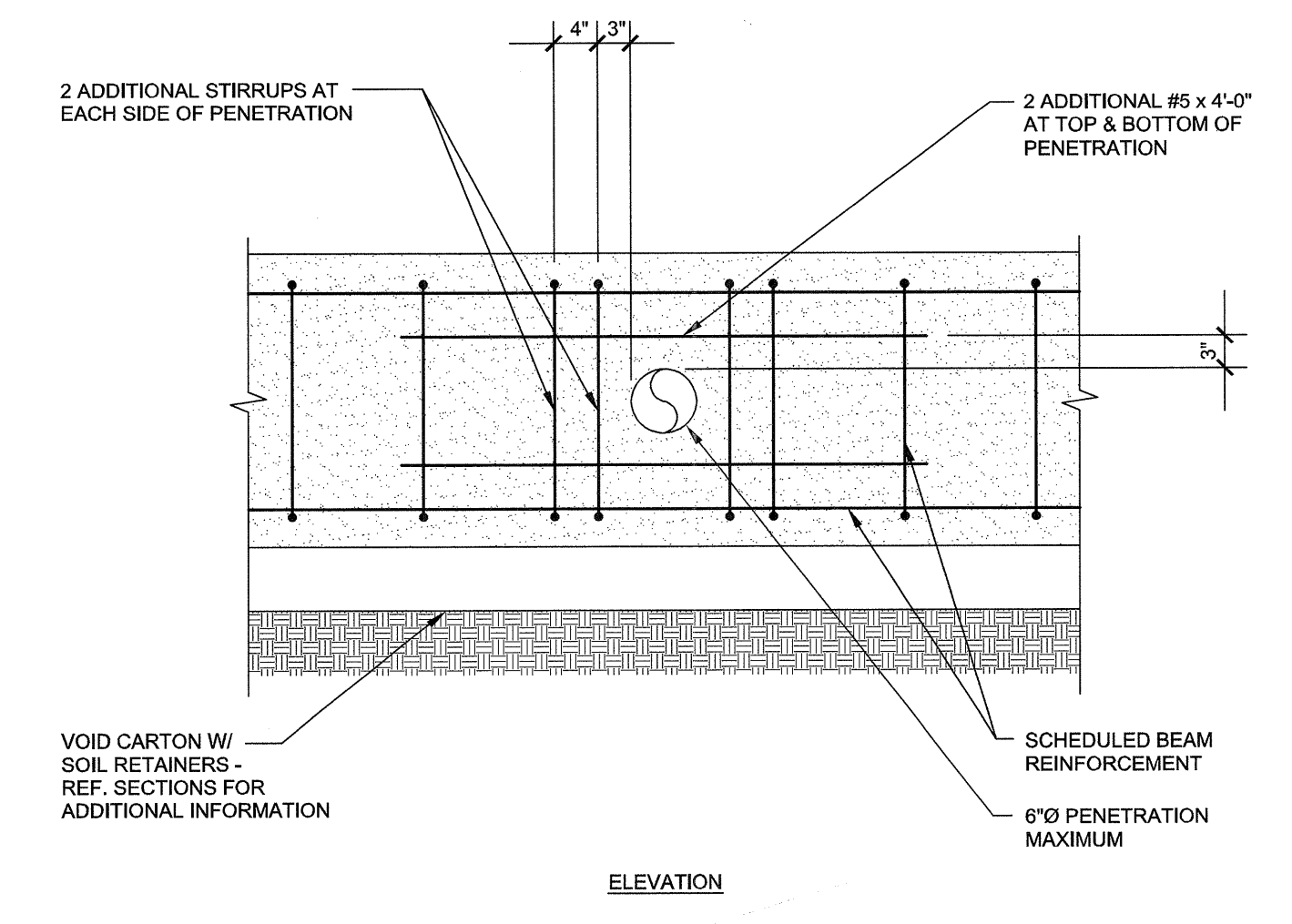
1 TYPICAL DRILLED PIER DETAIL
NO SCALE
RFI 82



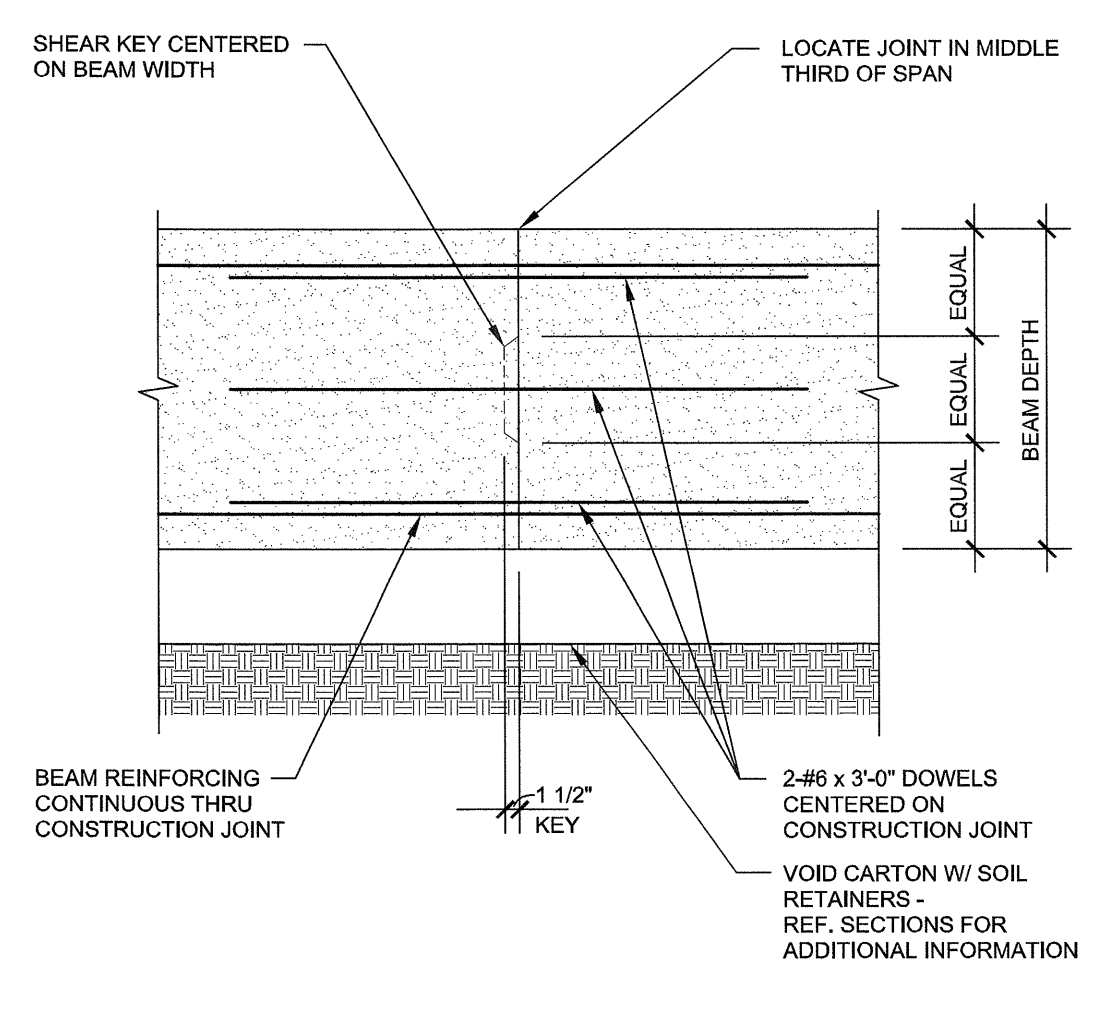
2 TYPICAL UNSCHEDULED CONCRETE BEAM REINFORCEMENT DETAIL
NO SCALE



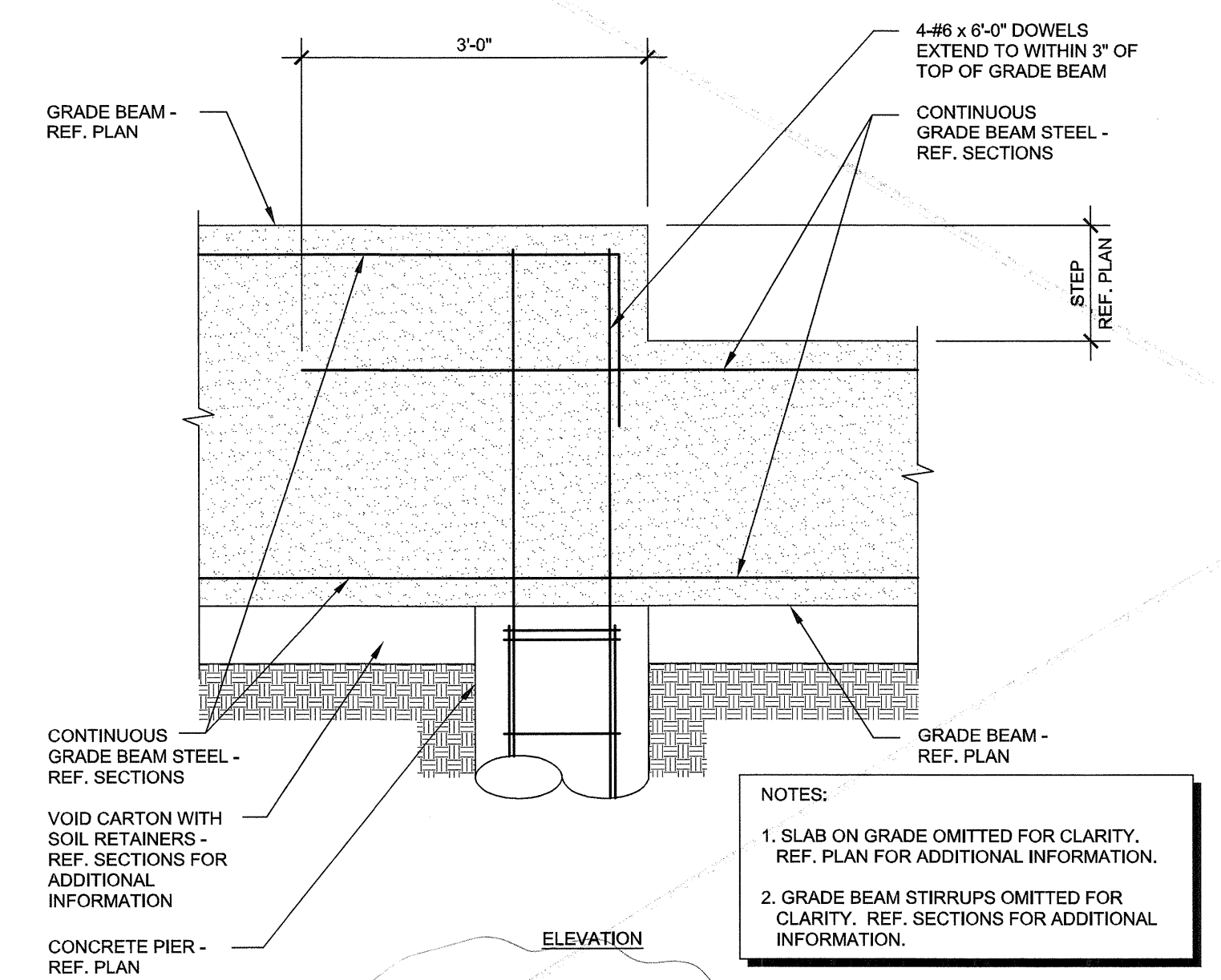
3 TYPICAL CORNER BARS AT CONCRETE WALL, BEAM AND FOOTING INTERSECTION DETAIL
NO SCALE



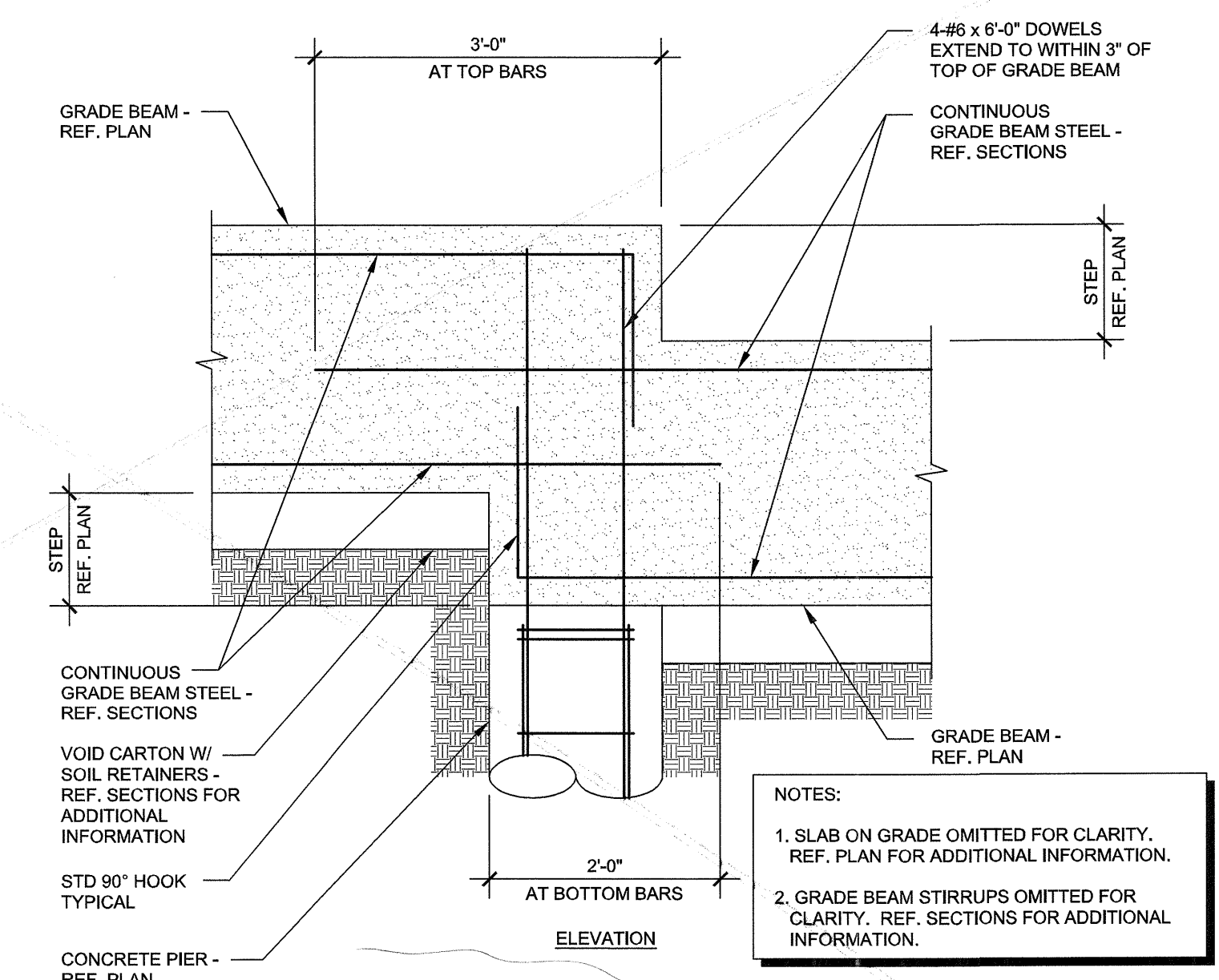
4 TYPICAL GRADE BEAM PENETRATION DETAIL
NO SCALE



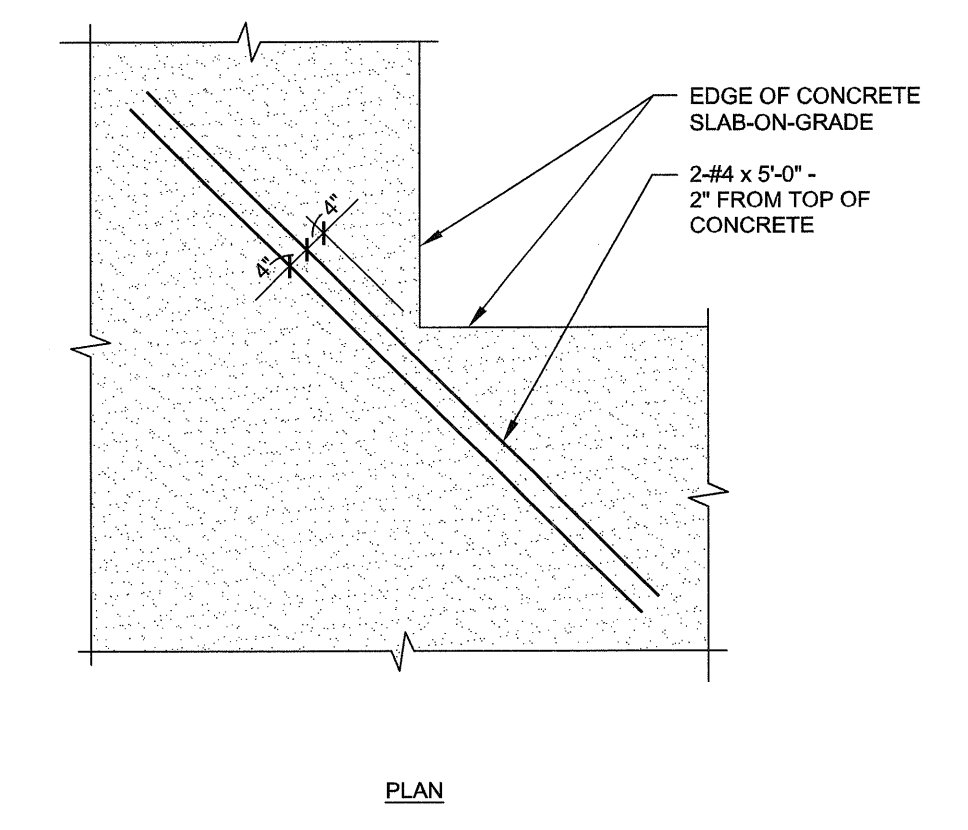
5 TYPICAL GRADE BEAM CONSTRUCTION JOINT DETAIL
NO SCALE



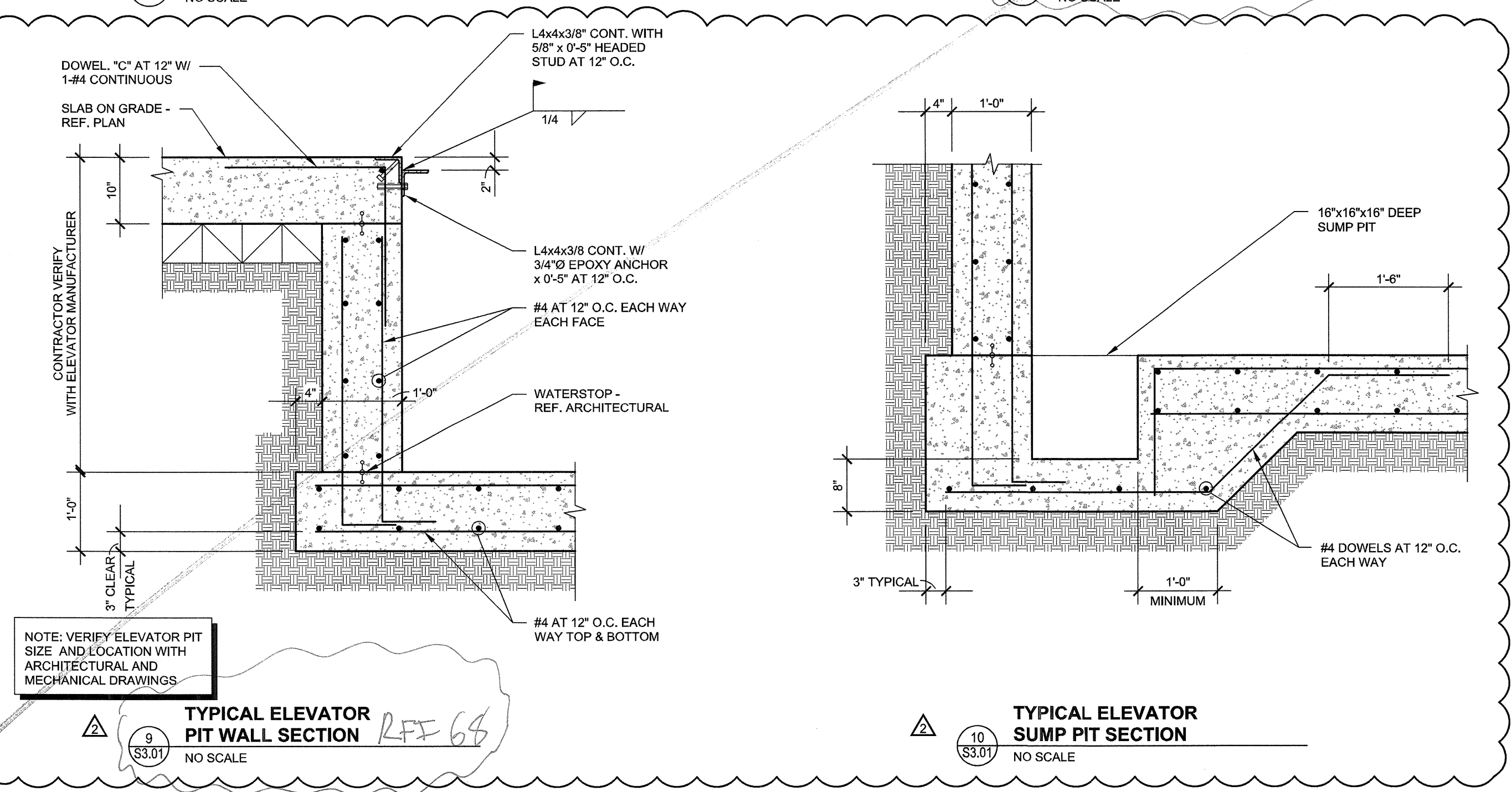
6 TYPICAL STEP IN GRADE BEAM DETAIL
NO SCALE
RFI 108



7 TYPICAL STEP IN GRADE BEAM DETAIL
NO SCALE
RFI 108



8 TYPICAL RE-ENTRANT SLAB CORNER REINFORCING DETAIL
NO SCALE



9 TYPICAL ELEVATOR PIT WALL SECTION
NO SCALE
RFI 68

10 TYPICAL ELEVATOR SUMP PIT SECTION
NO SCALE

REVISIONS	
SLAB ON VOID FOUNDATION	11/18/2011
RFI - 068	03/01/2012

KELLER SPRINGS LOFTS
LOFT APARTMENTS IN ADDISON, TEXAS

CONSTRUCTION ISSUE
10-17-2011

BGO architects
4144 N. Central Expy., Suite 855
Dallas, TX 75204
214.520.8878
bgoarchitects.com

DATE
08-05-2011

PROJECT
11129

SHEET NUMBER

S3.01



THE SEAL APPEARING ON THIS DOCUMENT WAS AUTHORIZED BY
R. TRENT PERKINS, P.E. 84264



PARKIN - PERKINS - OLSEN
CONSULTING ENGINEERING, INC.
9330 LBJ Freeway Suite 1055
Dallas, Texas 75243
Tel 214.221.2220 Fax 214.221.2252
Project No. 39155
Registration No. P-1479

THIS DOCUMENT IS THE RENDERING OF A PROFESSIONAL SERVICE, THE ESSENCE OF WHICH IS THE PROVIDING OF ADVICE, JUDGEMENT, OPINION, OR SIMILAR PROFESSIONAL SKILL.