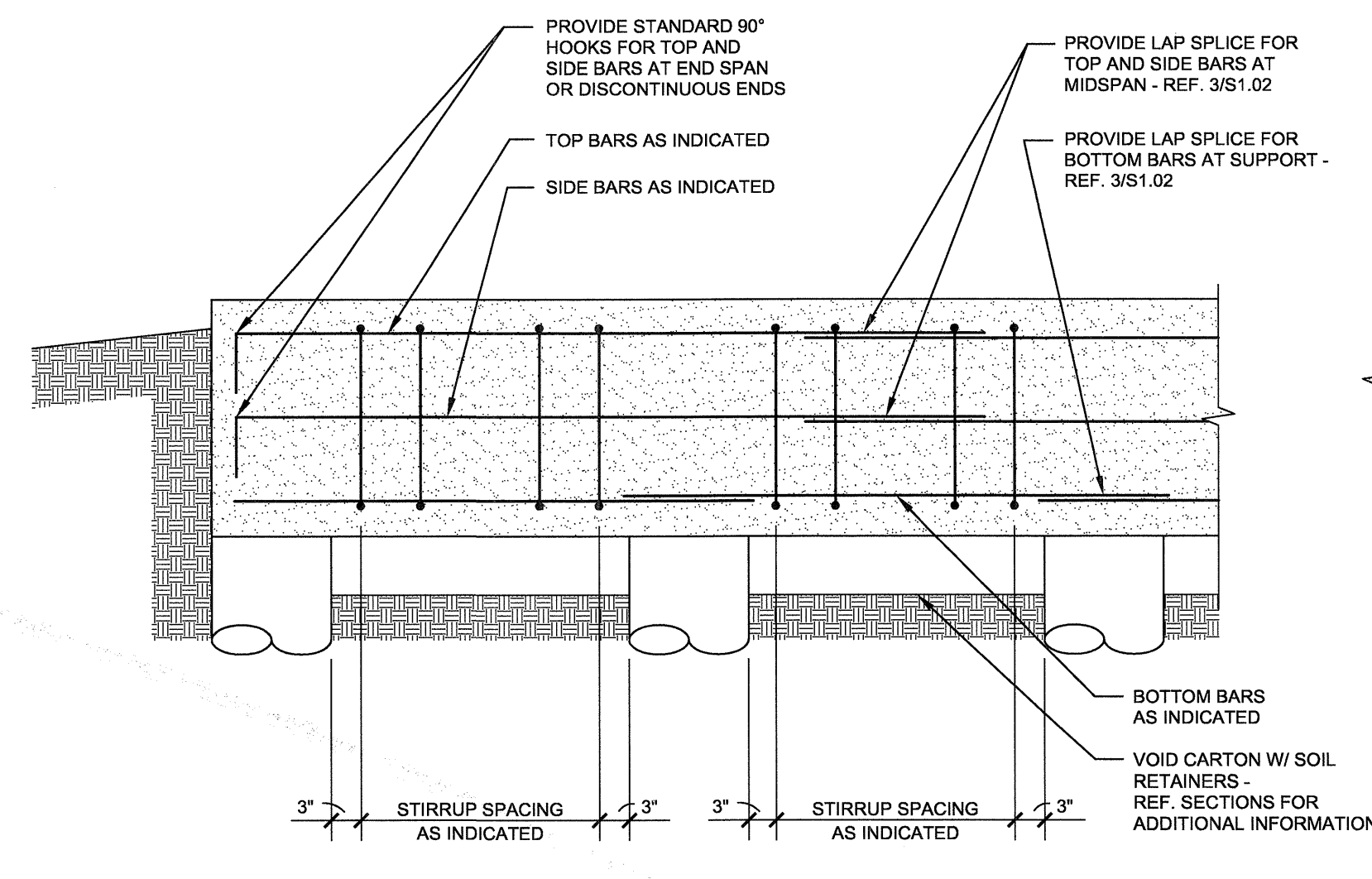
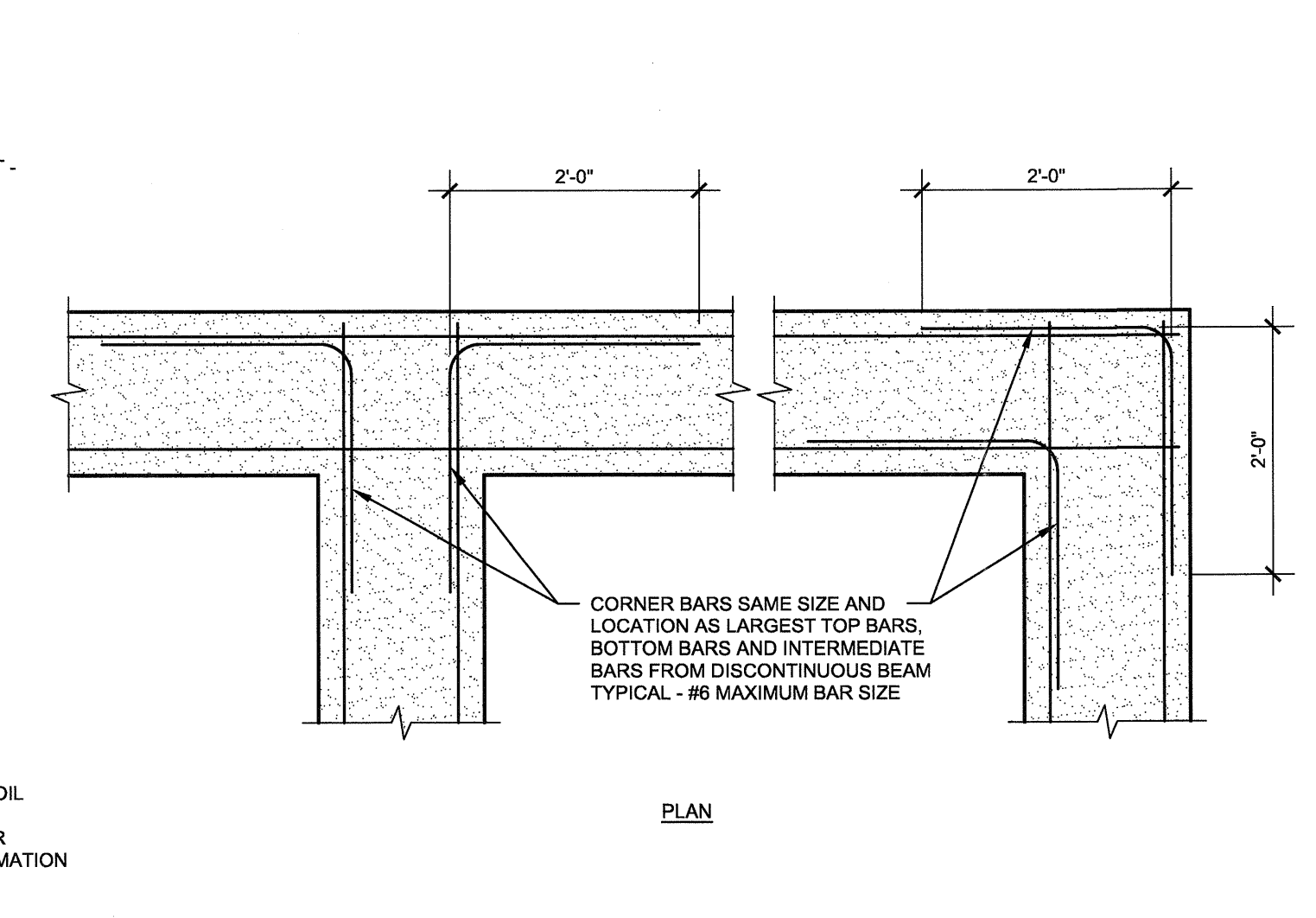


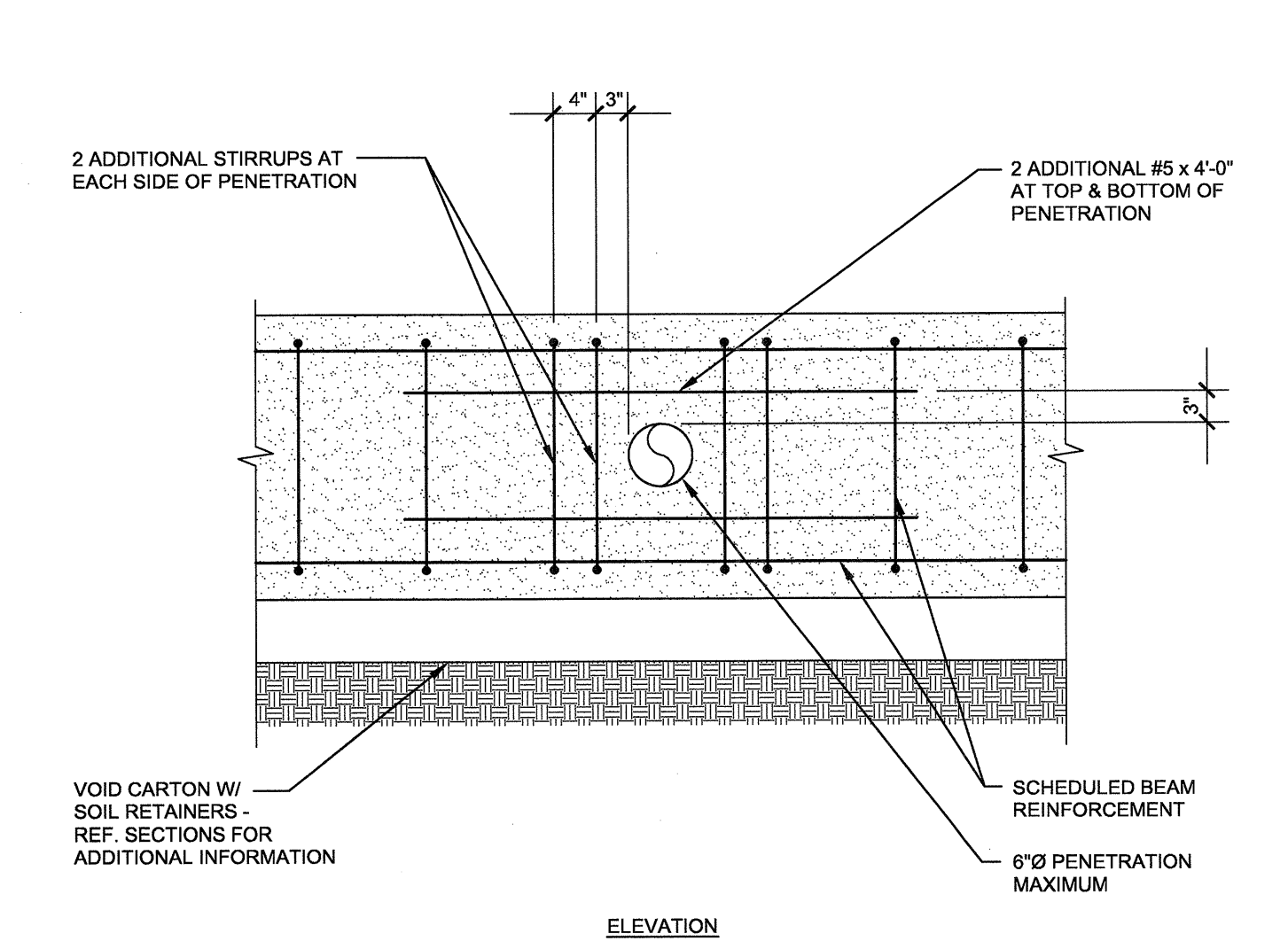
1 TYPICAL DRILLED PIER DETAIL
NO SCALE
RFI 62



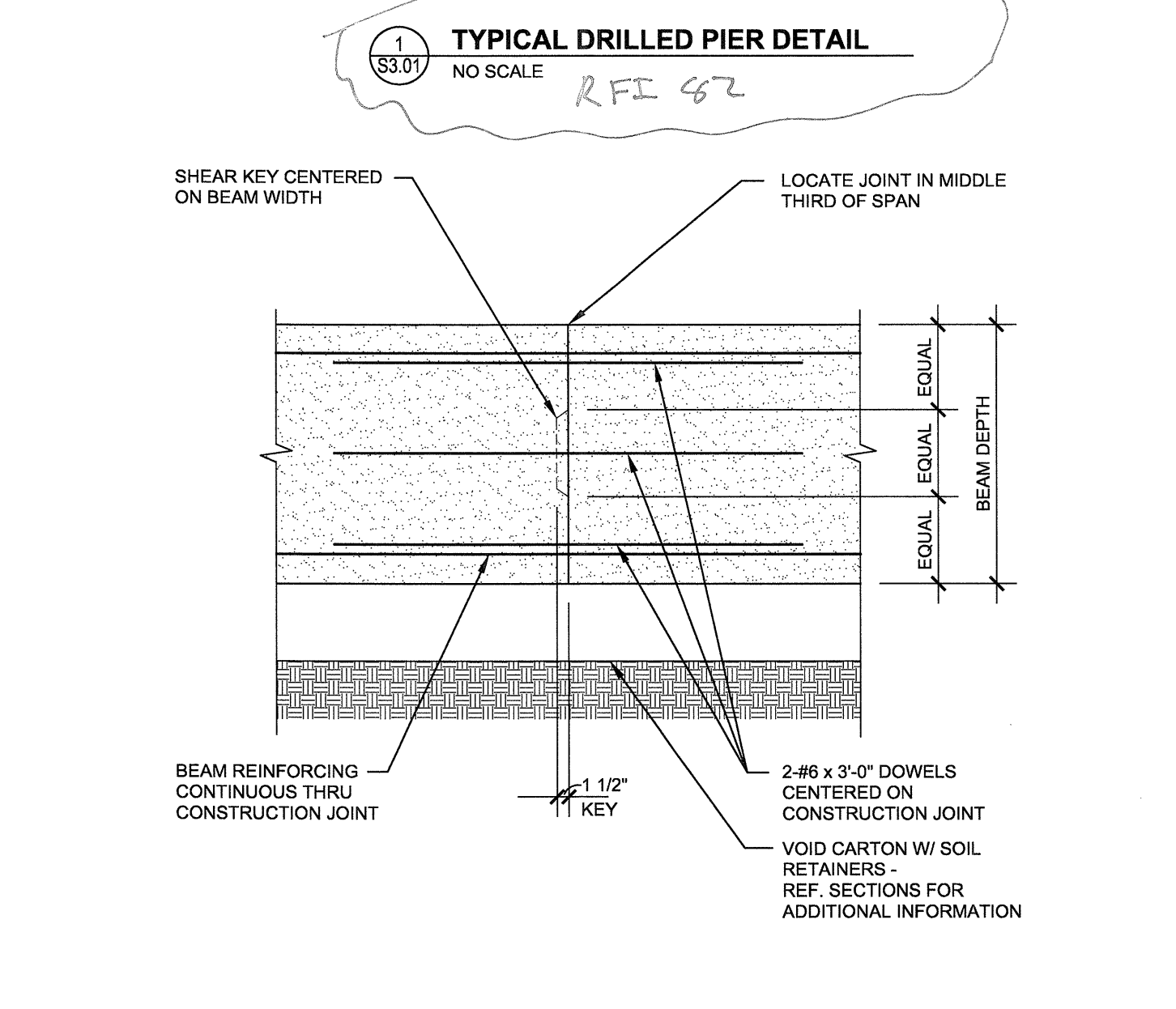
2 TYPICAL UNSCHEDULED CONCRETE BEAM REINFORCEMENT DETAIL
NO SCALE



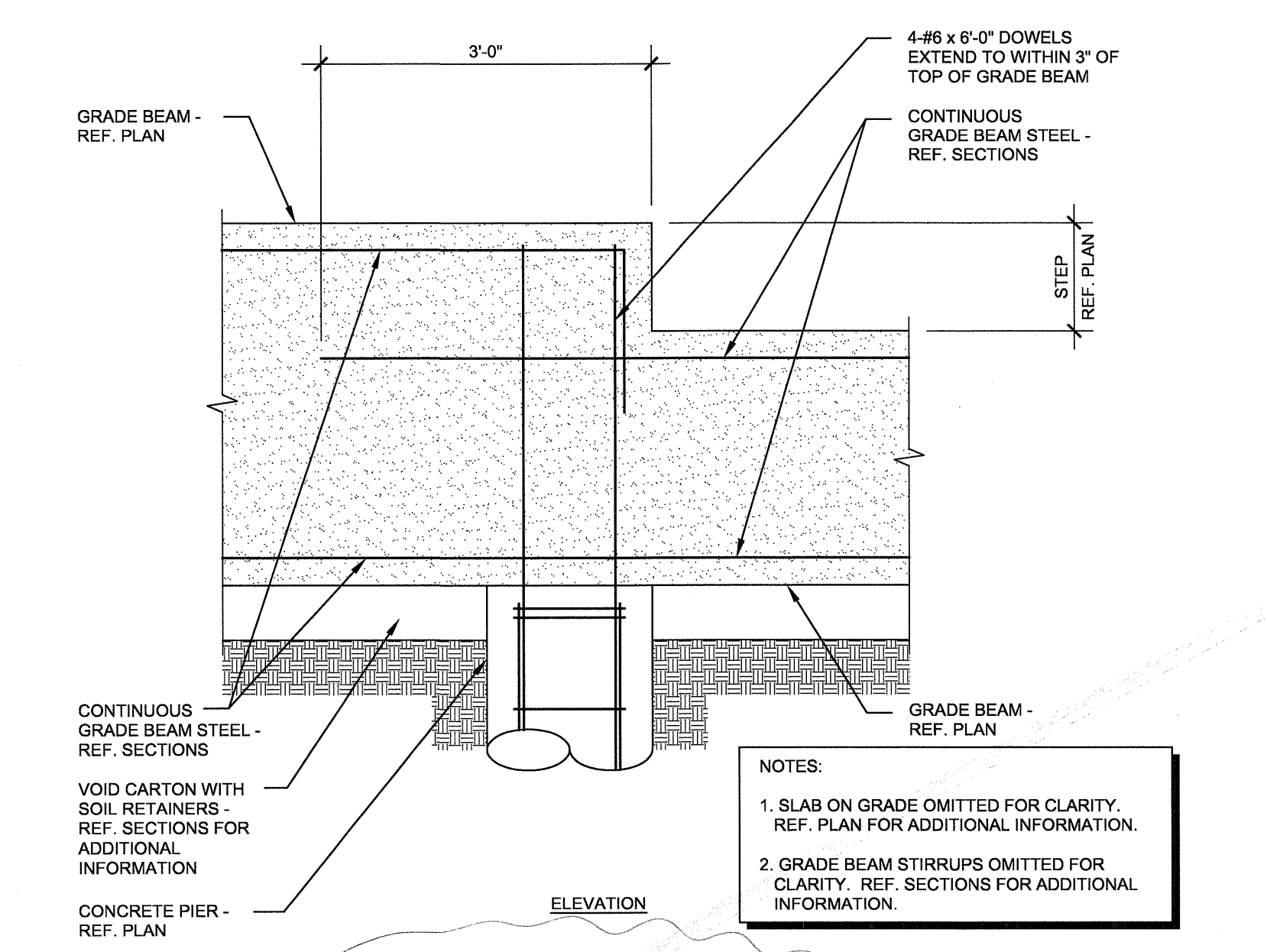
3 TYPICAL CORNER BARS AT CONCRETE WALL, BEAM AND FOOTING INTERSECTION DETAIL
NO SCALE



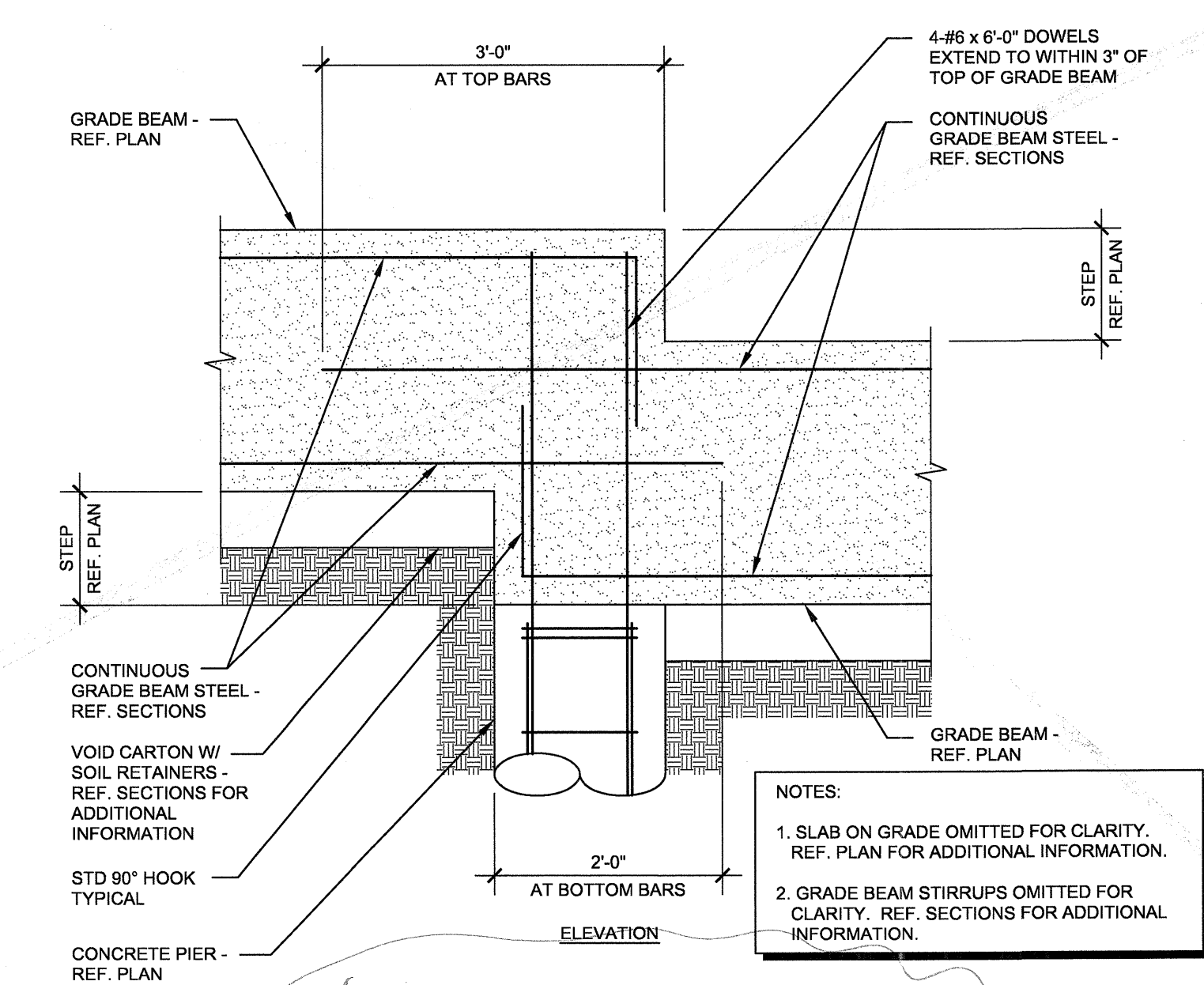
4 TYPICAL GRADE BEAM PENETRATION DETAIL
NO SCALE



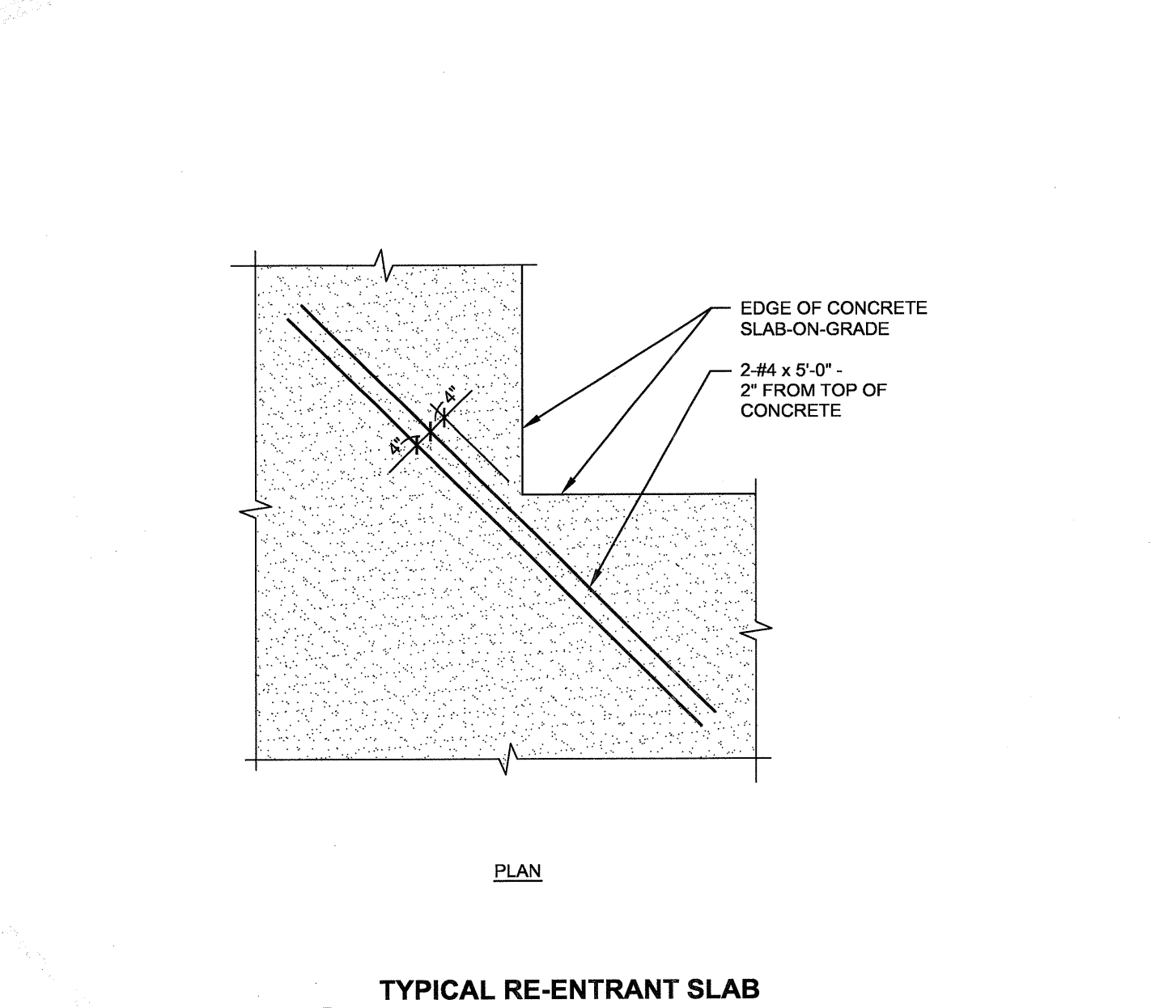
5 TYPICAL GRADE BEAM CONSTRUCTION JOINT DETAIL
NO SCALE



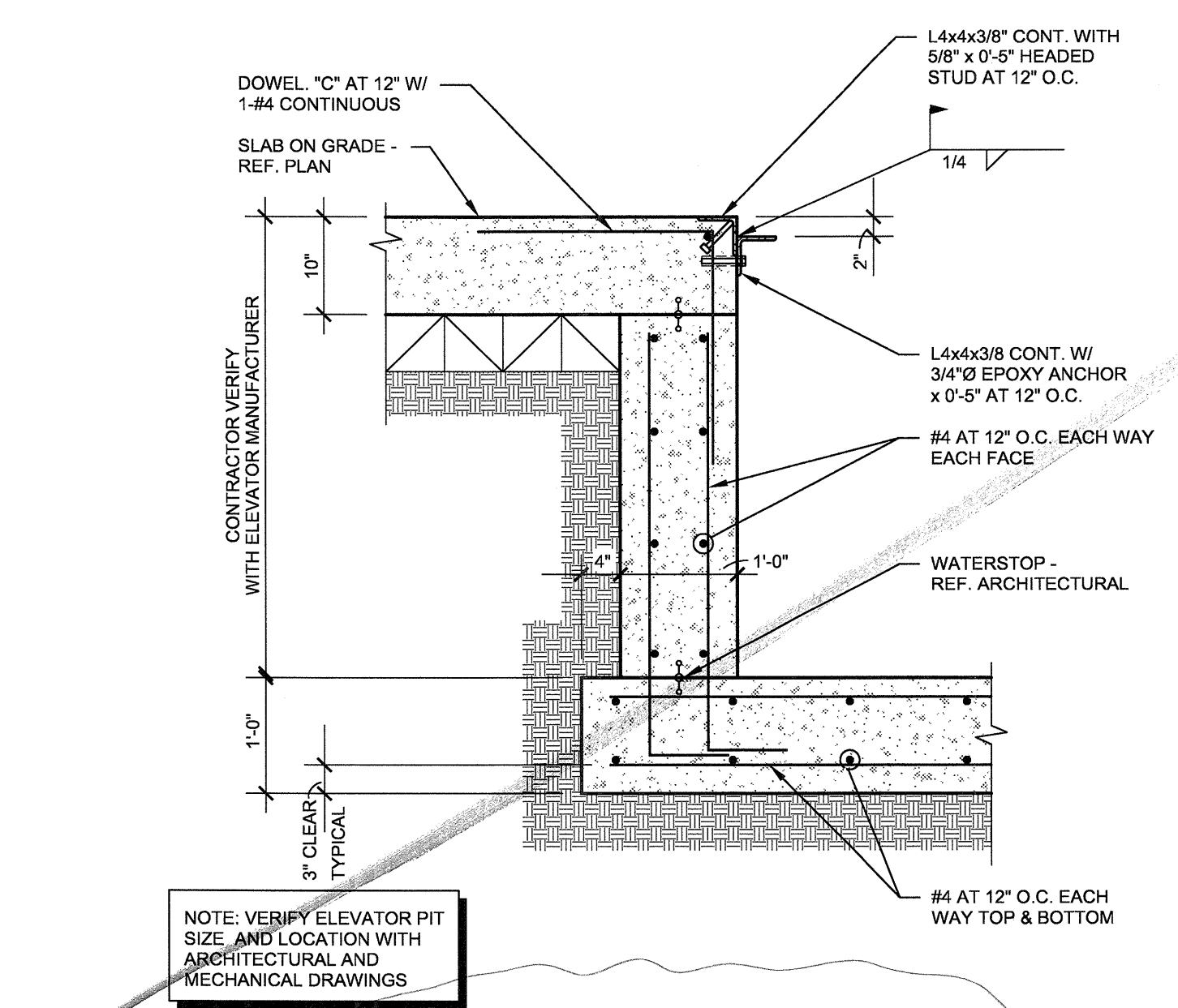
6 TYPICAL STEP IN GRADE BEAM DETAIL
NO SCALE
RFI 108



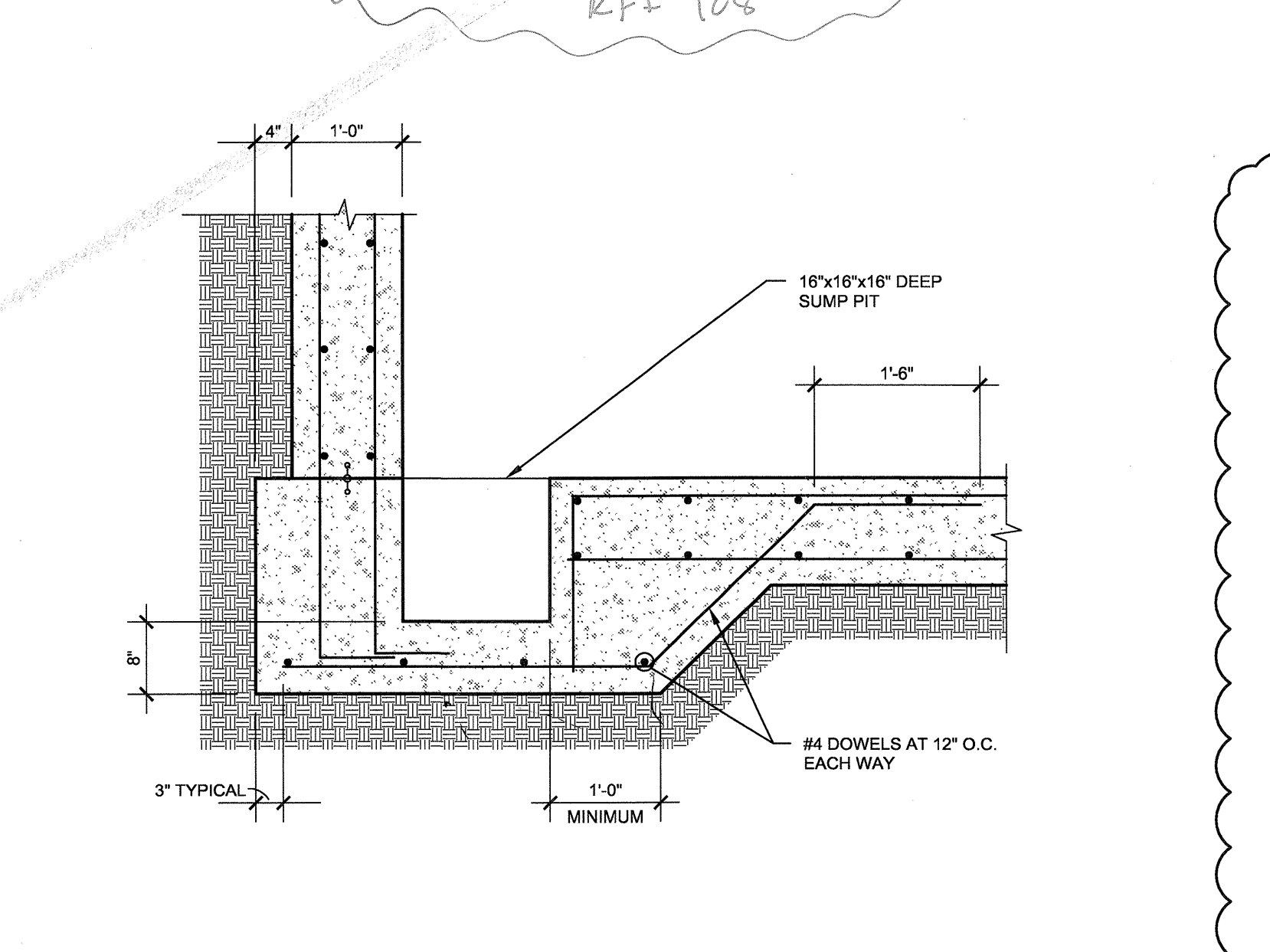
7 TYPICAL STEP IN GRADE BEAM DETAIL
NO SCALE
RFI 108



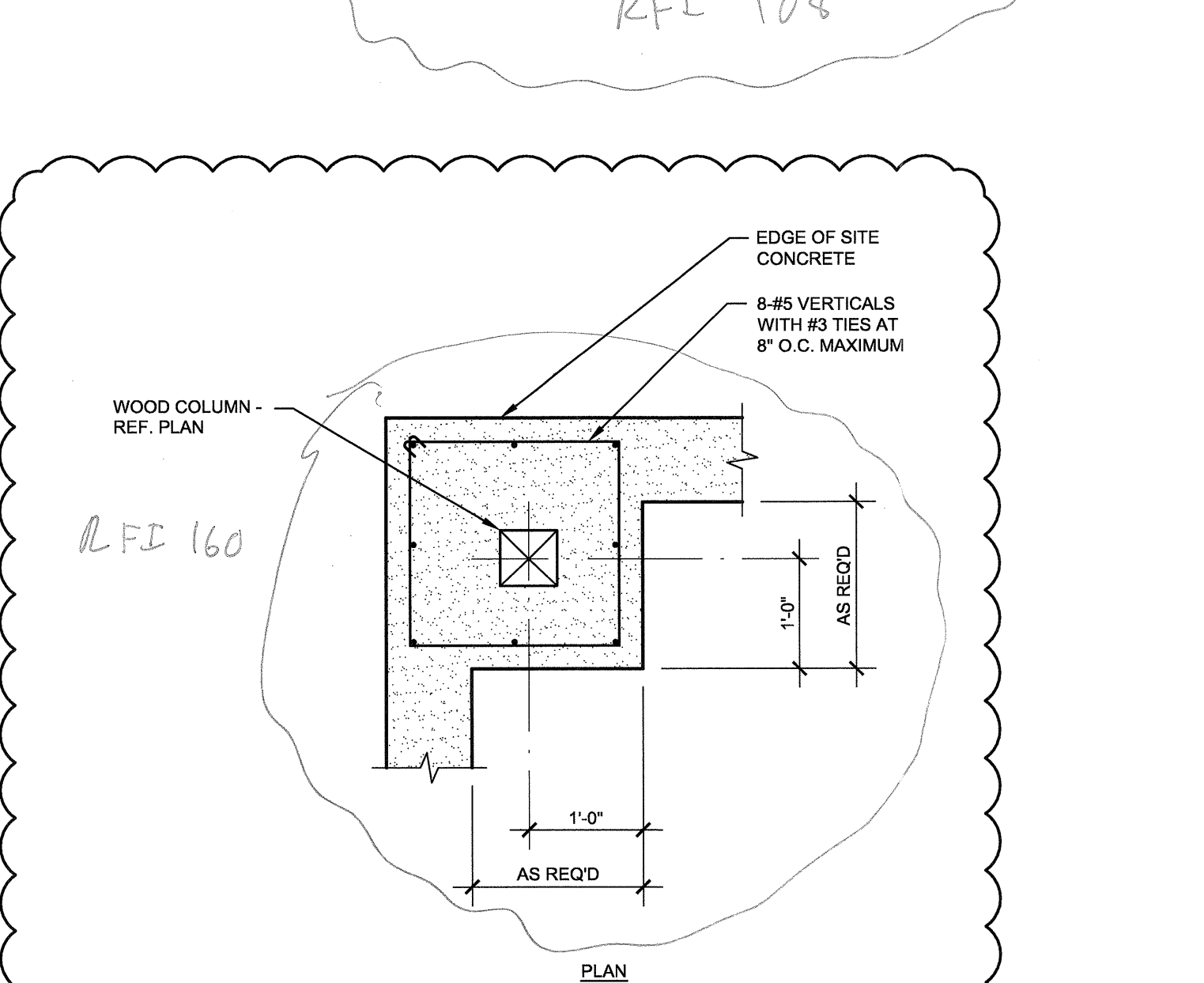
8 TYPICAL RE-ENTRANT SLAB CORNER REINFORCING DETAIL
NO SCALE



9 TYPICAL ELEVATOR PIT WALL SECTION
NO SCALE
RFI 68



10 TYPICAL ELEVATOR SUMP PIT SECTION
NO SCALE



11 TYPICAL PILASTER DETAIL
NO SCALE

REVISIONS	
△ SLAB ON VOID FOUNDATION	11/18/2011
△ RFI - 068	03/01/2012
△ RFI - 101	5/30/2012

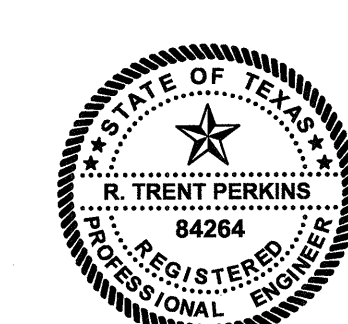
KELLER SPRINGS LOFTS
 LOFT APARTMENTS IN ADDISON, TEXAS

CONSTRUCTION ISSUE
 10-17-2011

BGO architects
 4144 N. Central Expy., Suite 855
 Dallas, TX 75204
 214.520.8878
 bgoarchitects.com

DATE
 08-05-2011
 PROJECT
 11129
 SHEET NUMBER

S3.01



THE SEAL APPEARING ON THIS DOCUMENT WAS AUTHORIZED BY R. TRENT PERKINS, P.E. 84264



PARKIN - PERKINS - OLSEN
 CONSULTING ENGINEERING, INC.
 9330 LBJ Freeway Suite 1055
 Dallas, Texas 75243
 Tel 214.221.2220 Fax 214.221.2252
 Project No. 39155
 Registration No. F-1479

THIS DOCUMENT IS THE RENDERING OF A PROFESSIONAL SERVICE, THE ESSENCE OF WHICH IS THE PROVIDING OF ADVICE, JUDGEMENT, OPINION, OR SIMILAR PROFESSIONAL SKILL.