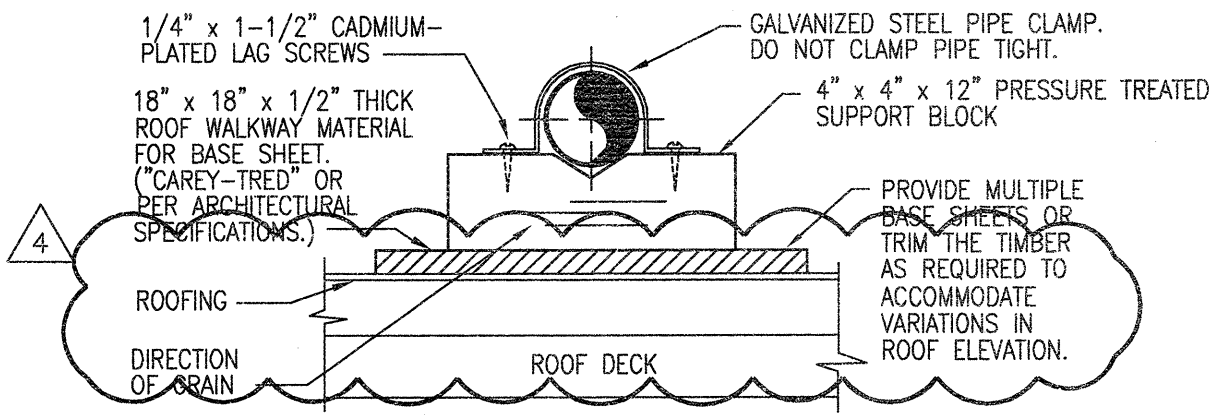


**ROOF TOP AIR CONDITIONER DETAIL**

SCHEMATIC - NO SCALE

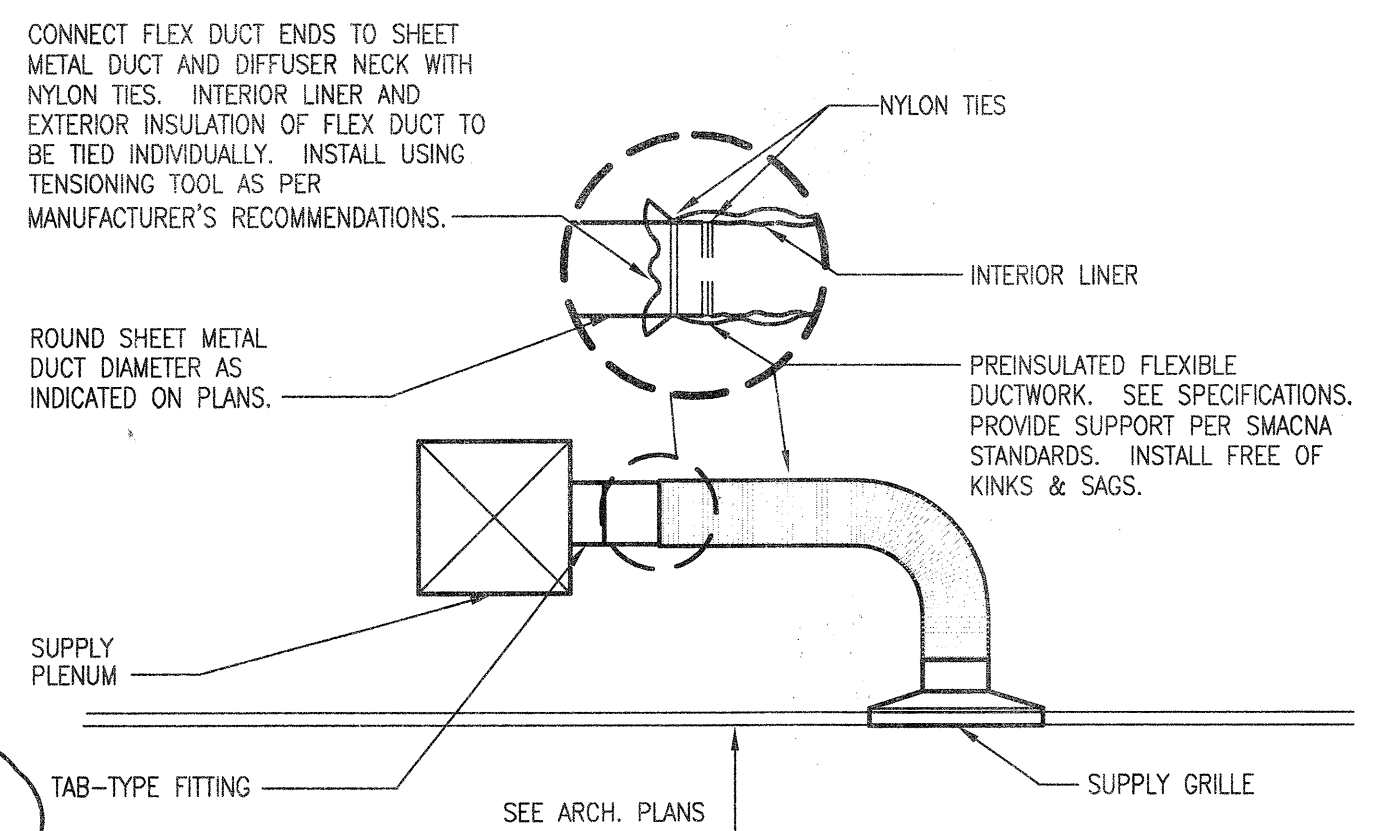
NOTE: ALL CONNECTIONS AND SERVICES MUST BE INSIDE THE PERIMETER CURB. DISCONNECT SWITCHES, BRACKETS, AND CONDUIT MUST BE CLEAR OF ALL UNIT PANELS AND AIR FLOW. MOUNTING BRACKETS MUST BE TO STRUCTURAL MEMBERS OF UNIT.



**PIPING SUPPORT (CONDENSATE)**

SCHEMATIC - NO SCALE

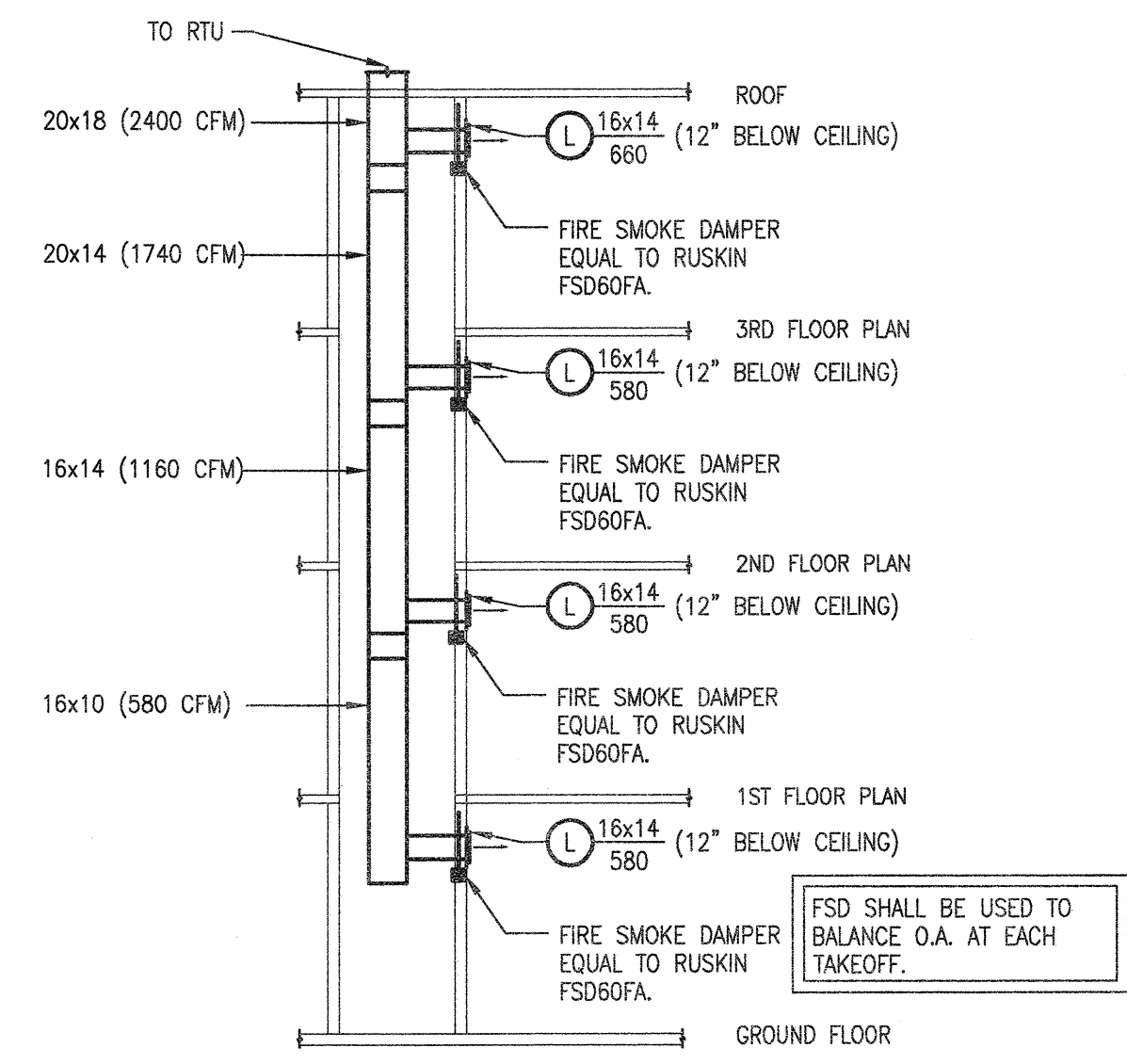
NOTES:  
1. PLACE BASE SHEETS ON ROOFING BEFORE GRAVEL, IF ANY. SET BLOCKS FREE ON BASE SHEETS. STACK BLOCKS AND NAIL THEM TOGETHER WHERE REQUIRED TO ELEVATE PIPING.  
2. SUPPORTS SHALL BE PLACED EVERY 6' ON CENTER (BASED ON SCHEDULE 40 PVC).



**FLEXIBLE DUCT TAKE-OFF DETAIL**

SCHEMATIC - NO SCALE

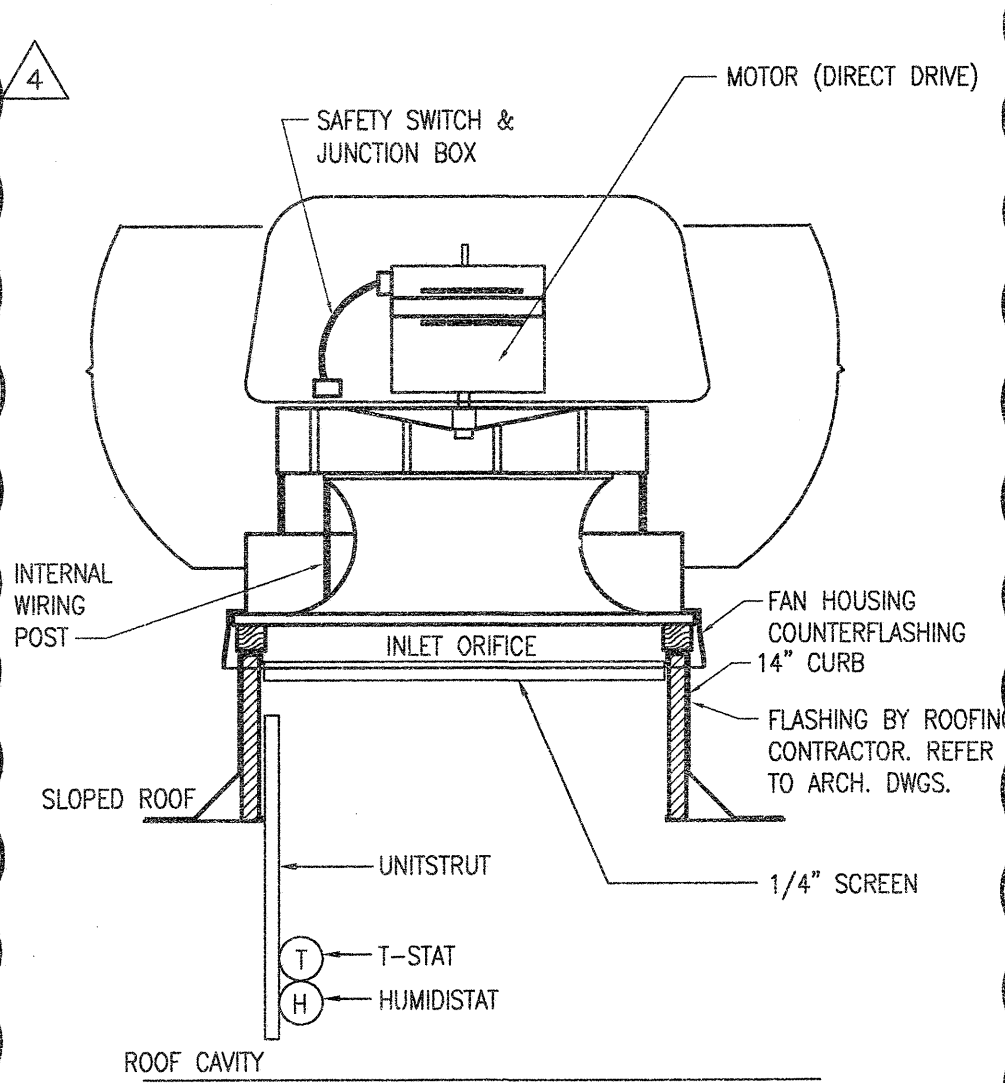
NOTE: SEAL INTERIOR LINER OF FLEX DUCT WITH MASTIC AT CONNECTION TO METAL DUCTWORK, DUCTBOARD AND DIFFUSERS.



**4 STORY CORRIDOR SUPPLY AIR RISER**

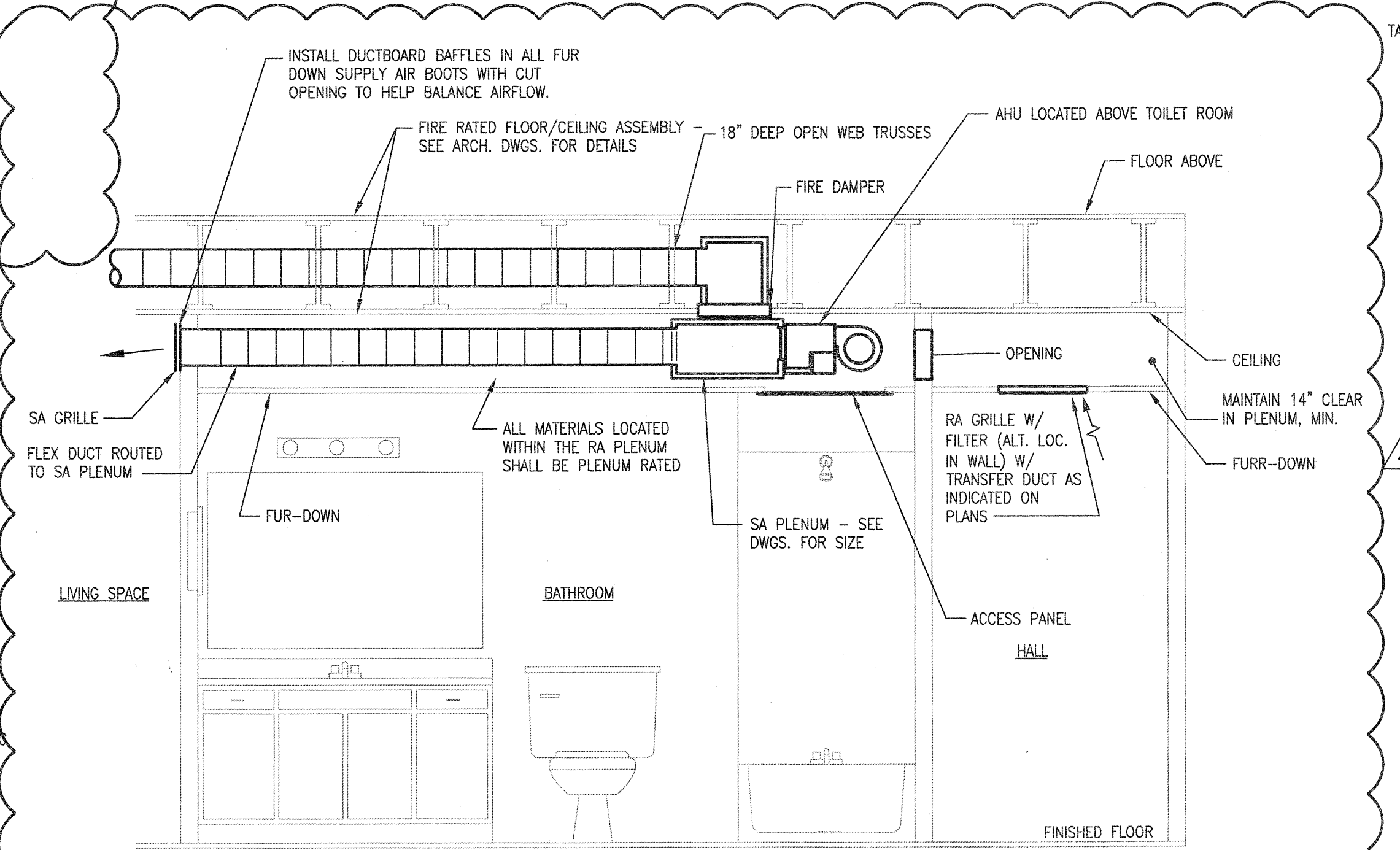
SCHEMATIC - NO SCALE

FSD SHALL BE USED TO BALANCE O.A. AT EACH TAKEOFF.



**ROOF VENTILATION FAN**

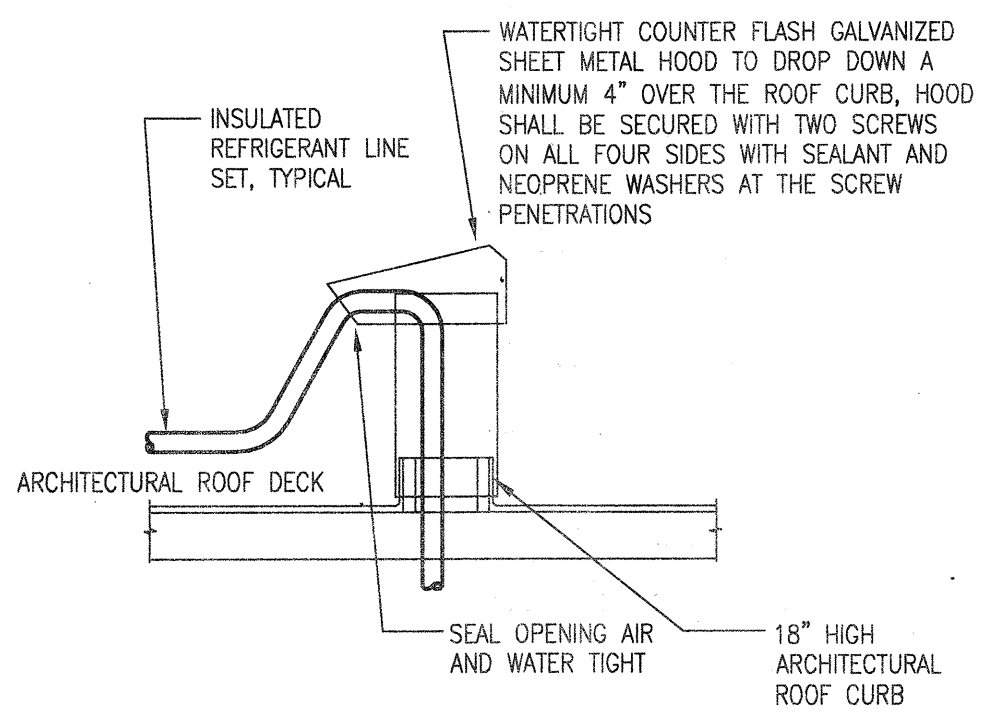
SCHEMATIC - NO SCALE



**TYPICAL SECTION THROUGH BATHROOM**

SCHEMATIC - NO SCALE

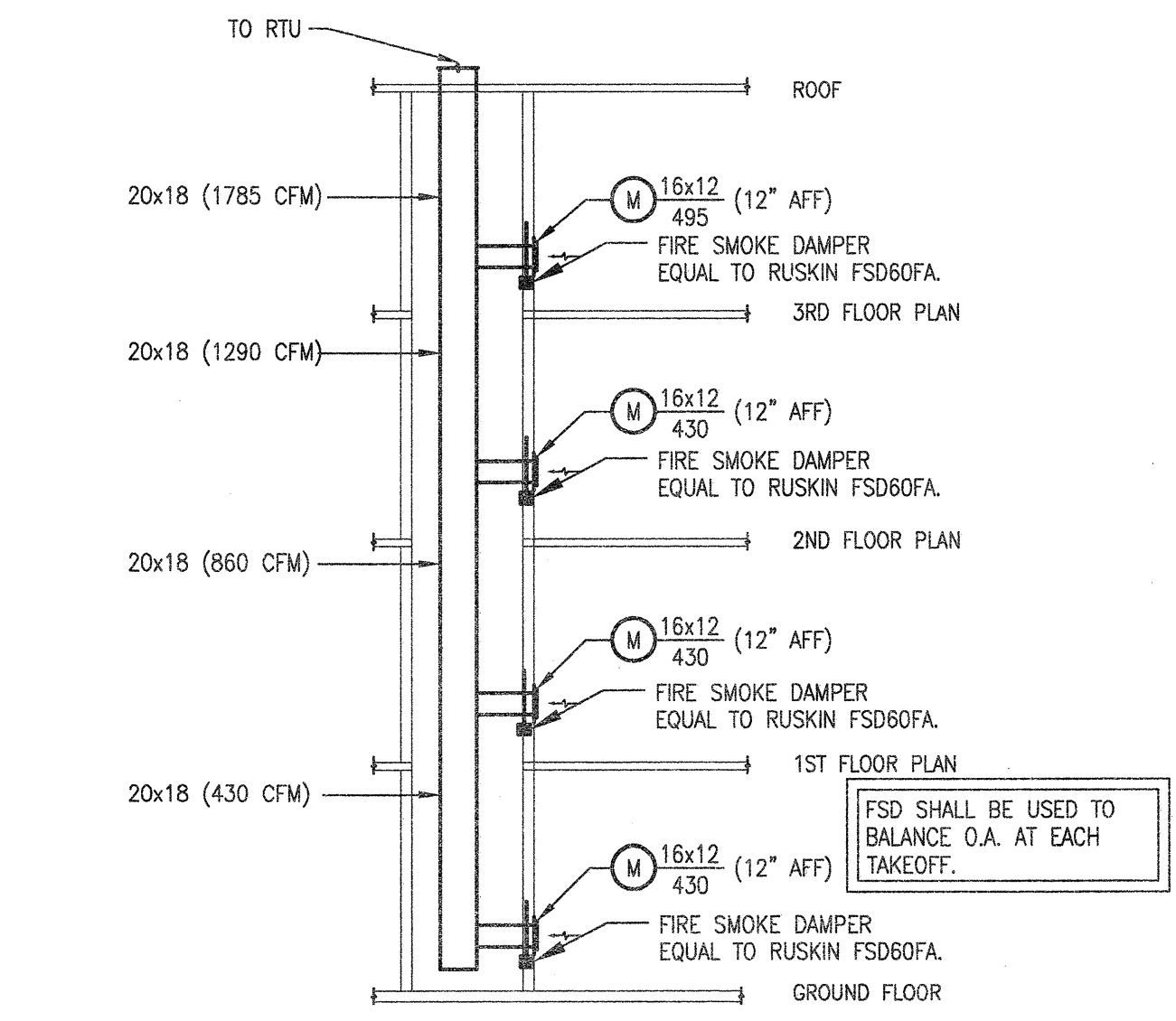
NOTES:  
1. BATHROOM WALLS SHALL BE FULL HEIGHT FROM FINISHED FLOOR TO BOTTOM OF RATED ASSEMBLY.  
2. ROUTE AIR HANDLER CONDENSATE DRAIN TO LAVATORY TAIL PIECE.  
3. PROVIDE SECONDARY CONDENSATE DRAIN ROUTED TO DISCHARGE OVER TUB. PROVIDE DISCHARGE CAP FOR A NEAT AND CLEAN APPEARANCE.  
4. ALL PLENUM PENETRATIONS TO BE SEALED AIRTIGHT.



**REFRIGERANT LINE SET HOOD DETAIL**

SCHEMATIC - NO SCALE

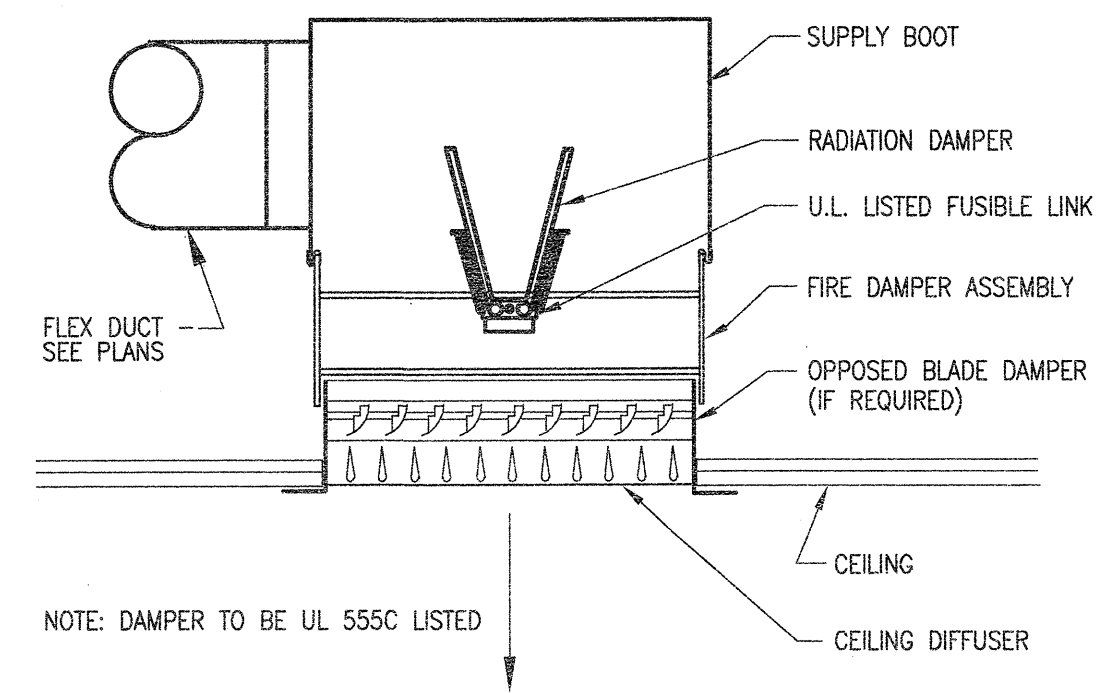
WATERTIGHT COUNTER FLASH GALVANIZED SHEET METAL HOOD TO DROP DOWN A MINIMUM 4" OVER THE ROOF CURB. HOOD SHALL BE SECURED WITH TWO SCREWS ON ALL FOUR SIDES WITH SEALANT AND NEOPRENE WASHERS AT THE SCREW PENETRATIONS.



**4 STORY CORRIDOR RETURN AIR RISER**

SCHEMATIC - NO SCALE

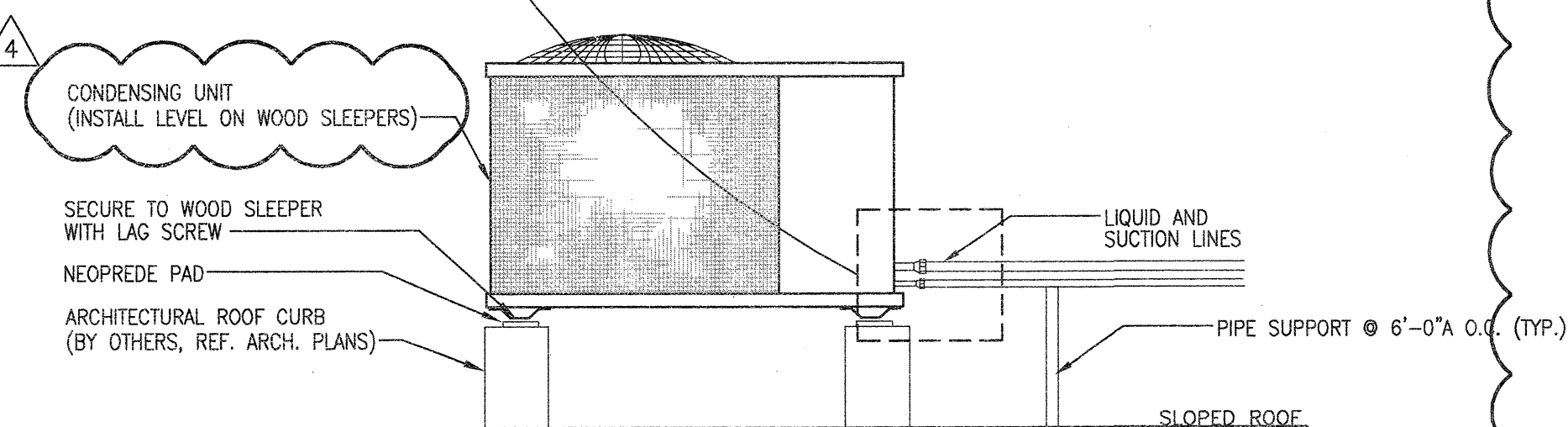
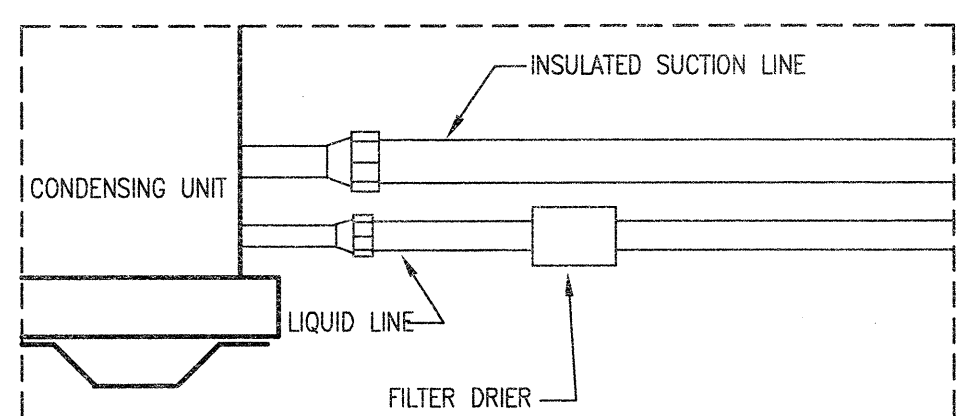
FSD SHALL BE USED TO BALANCE O.A. AT EACH TAKEOFF.



**CEILING RADIATION DAMPER DETAIL**

SCHEMATIC - NO SCALE

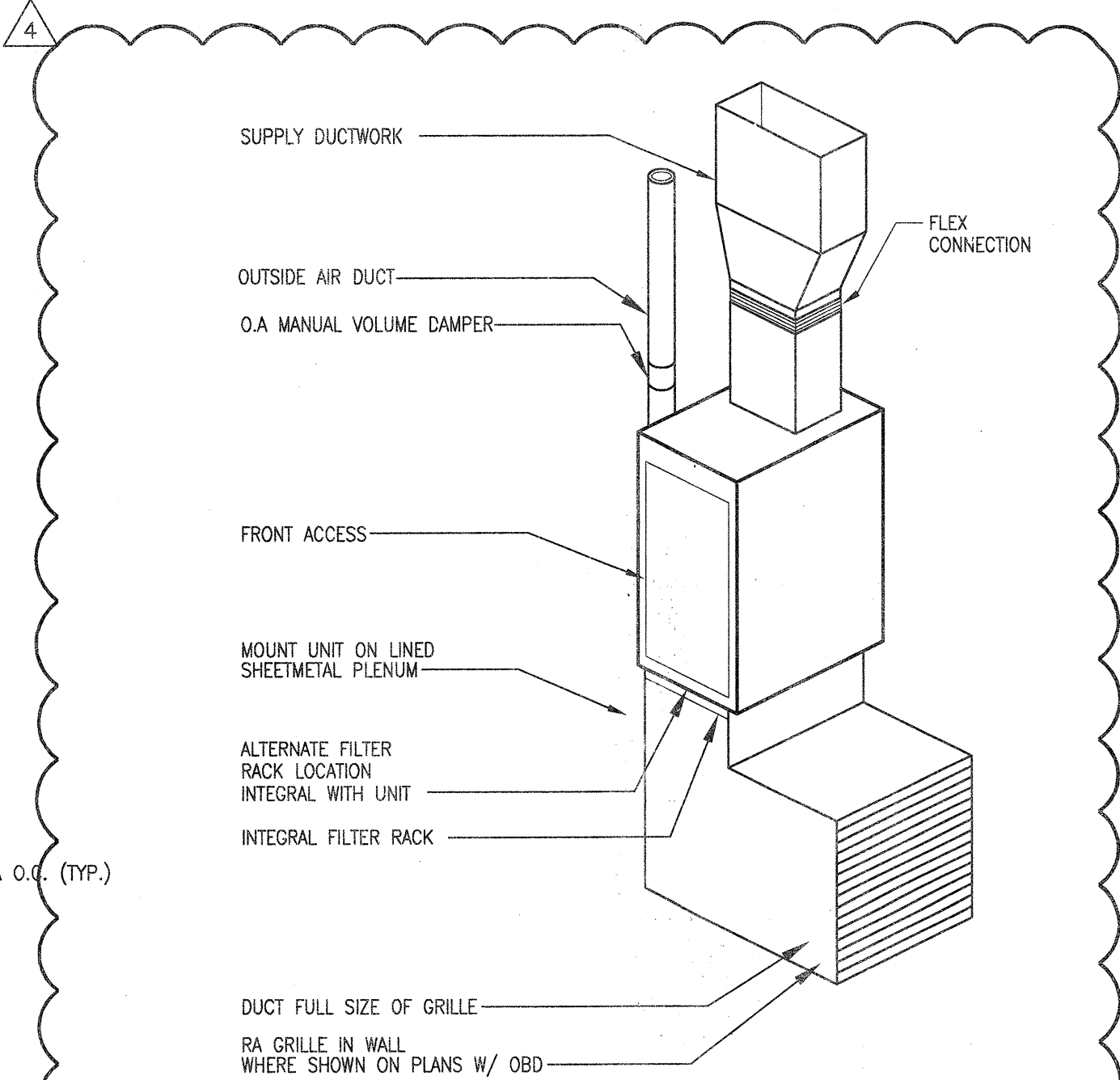
NOTE: DAMPER TO BE UL 555C LISTED



**SPLIT SYSTEM OUTDOOR CONDENSING UNIT MOUNTING**

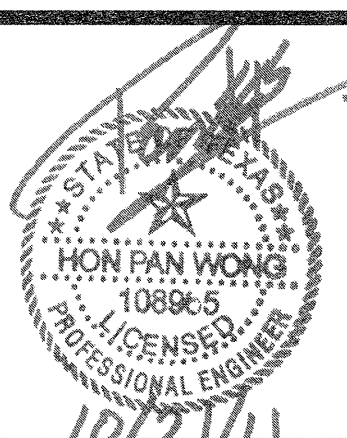
SCHEMATIC - NO SCALE

NOTES:  
1. MAINTAIN 24" CLEAR BETWEEN CONDENSING UNITS  
2. MECHANICAL CONTRACTOR TO COORDINATE ROOF CURB DIMENSIONS WITH INSTALLING CONTRACTOR PRIOR TO CONSTRUCTION.



**(COMMON AREA) AH MOUNTING DETAIL**

SCHEMATIC - NO SCALE



**REVISIONS**

1	9-2-2011	DESIGN REVISIONS
2	9-13-2011	ANSI/FHA COMMENTS
3	9-23-2011	DESIGN REVISIONS
4	10-17-2011	CONSTRUCTION ISSUE

**KELLER SPRINGS LOFTS**

LOFT APARTMENTS IN ADDISON, TEXAS

**AS BUILT**



4144 N. Central Expy. Suite 855  
Dallas, TX 75204  
214.520.8878  
bgoarchitects.com

DATE  
08-05-11

PROJECT  
11129

SHEET NUMBER

**M-1.2**

**DETAILS MECHANICAL**

**JSE** Jordan & Skala Engineers  
14750 Midway Road, Suite 330  
Dallas, TX 75244-5138  
Project Number - 113-0355  
Texas Firm Registration # F-4990  
Checked By: AHS