

4

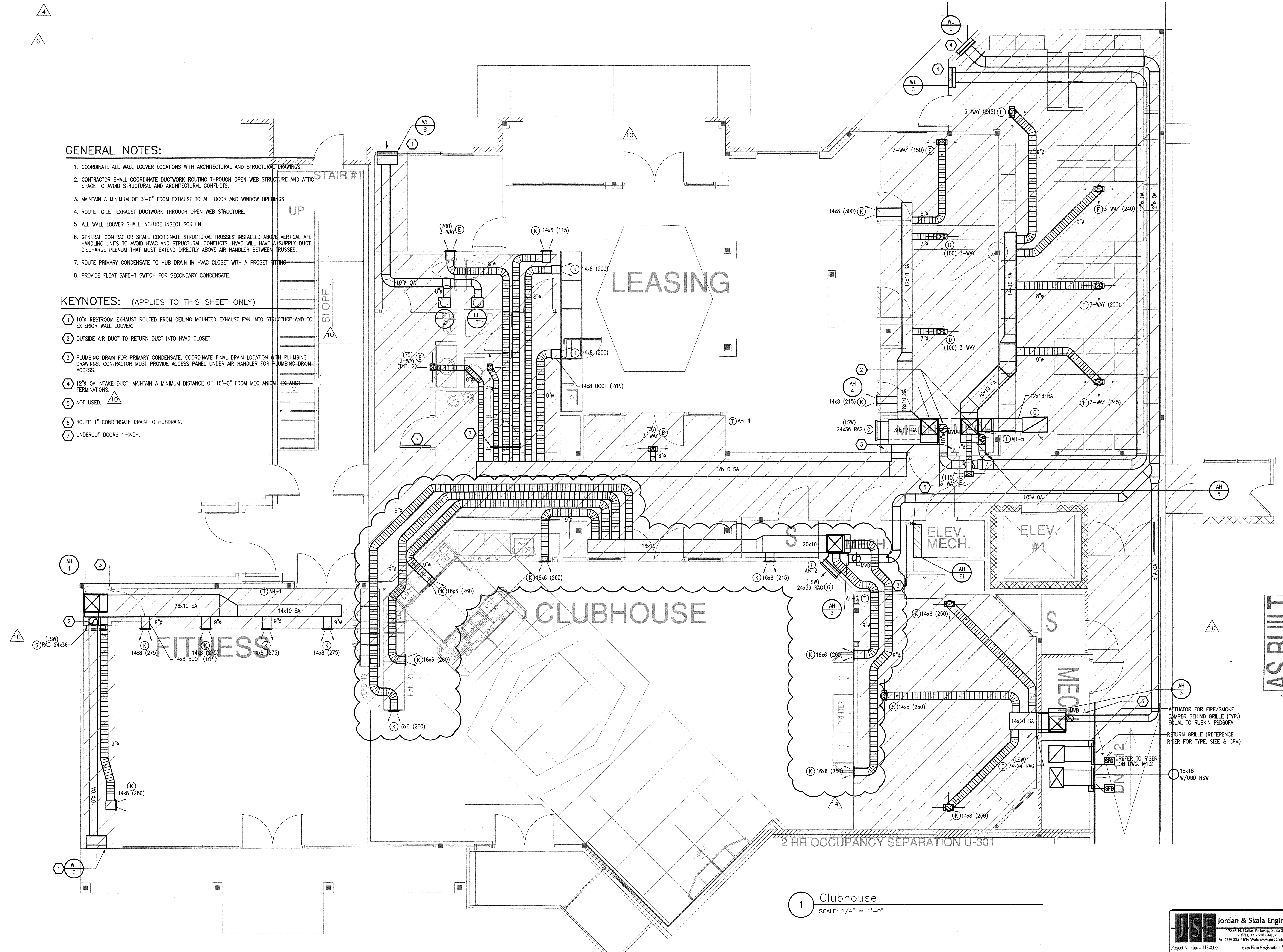
6

**GENERAL NOTES:**

1. COORDINATE ALL WALL LOUVER LOCATIONS WITH ARCHITECTURAL AND STRUCTURAL DRAWINGS.
2. CONTRACTOR SHALL COORDINATE DUCTWORK ROUTING THROUGH OPEN WEB STRUCTURE AND ATTIC SPACE TO AVOID STRUCTURAL AND ARCHITECTURAL CONFLICTS.
3. MAINTAIN A MINIMUM OF 3'-0" FROM EXHAUST TO ALL DOOR AND WINDOW OPENINGS.
4. ROUTE TOILET EXHAUST DUCTWORK THROUGH OPEN WEB STRUCTURE.
5. ALL WALL LOUVER SHALL INCLUDE INSECT SCREEN.
6. GENERAL CONTRACTOR SHALL COORDINATE STRUCTURAL TRUSSES INSTALLED ABOVE VERTICAL AIR HANDLING UNITS TO AVOID HVAC AND STRUCTURAL CONFLICTS. HVAC WILL HAVE A SUPPLY DUCT DISCHARGE PLENUM THAT MUST EXTEND DIRECTLY ABOVE AIR HANDLER BETWEEN TRUSSES.
7. ROUTE PRIMARY CONDENSATE TO HUB DRAIN IN HVAC CLOSET WITH A PROSET FITTING.
8. PROVIDE FLOAT SAFE-T SWITCH FOR SECONDARY CONDENSATE.

**KEYNOTES: (APPLIES TO THIS SHEET ONLY)**

- 1 10" RESTROOM EXHAUST ROUTED FROM CEILING MOUNTED EXHAUST FAN INTO STRUCTURE AND TO EXTERIOR WALL LOUVER.
- 2 OUTSIDE AIR DUCT TO RETURN DUCT INTO HVAC CLOSET.
- 3 PLUMBING DRAIN FOR PRIMARY CONDENSATE. COORDINATE FINAL DRAIN LOCATION WITH PLUMBING DRAWINGS. CONTRACTOR MUST PROVIDE ACCESS PANEL UNDER AIR HANDLER FOR PLUMBING DRAIN ACCESS.
- 4 12" GA INTAKE DUCT. MAINTAIN A MINIMUM DISTANCE OF 10'-0" FROM MECHANICAL EXHAUST TERMINATIONS.
- 5 NOT USED.
- 6 ROUTE 1" CONDENSATE DRAIN TO HUBDRAIN.
- 7 UNDERCUT DOORS 1-INCH.



1 Clubhouse  
SCALE: 1/4" = 1'-0"



**REVISIONS**

1	9-2-2011	DESIGN REVISIONS
2	9-13-2011	ANSI/FHA COMMENTS DESIGN REVISIONS
3	9-23-2011	CONSTRUCTION ISSUE DESIGN REVISIONS
4	10-17-2011	DESIGN REVISIONS
5	12-21-2011	DESIGN REVISIONS
6	1-17-2012	DESIGN REVISIONS
7	2-15-2012	TRANSFORMER REVISIONS
8	3-27-2012	CLUBHOUSE REVISIONS
9	4-17-2012	COORDINATION

**KELLER SPRINGS LOFTS**

LOFT APARTMENTS IN ADDISON, TEXAS

10	5-15-2012	COORDINATION
11	5-30-2012	SITE COORDINATION
12	6-01-12	LIGHTING REVISIONS
13	6-29-12	SITE COORDINATION
14	9-05-12	CLUB REVISIONS

**BGO architects**

4144 N. Central Expy. Suite 855  
Dallas, TX 75204  
214.520.8878  
bgoarchitects.com

DATE  
08-05-11

PROJECT  
11129

SHEET NUMBER  
**M-9.1**

**CLUBHOUSE MECHANICAL**

**JSE** Jordan & Skala Engineers  
17835 N. Dallas Parkway, Suite 310  
Dallas, TX 75287-6857  
V: (469) 985-1616 Web: www.jordanskala.com  
Project Number - 113-0355 Texas Firm Registration # F-4990  
Drawn By: CJH Checked By: AHS

AS BUILT

ACTUATOR FOR FIRE/SMOKE DAMPER BEHIND GRILLE (TYP.) EQUAL TO RUSKIN FSD60FA.  
RETURN GRILLE (REFERENCE RISER FOR TYPE, SIZE & CFM)

REFER TO RISER ON DWG. M1.2

2 HR OCCUPANCY SEPARATION U-301