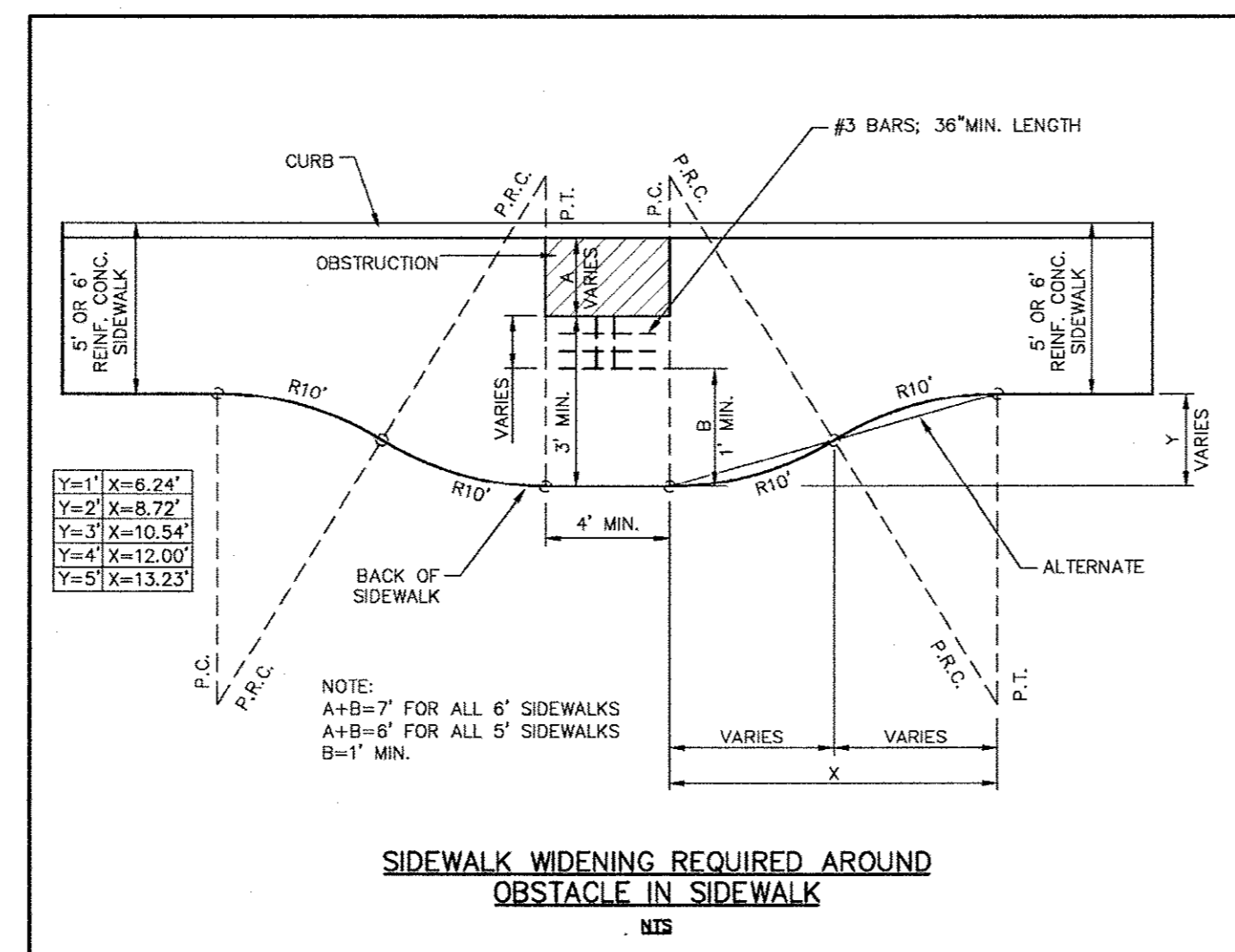
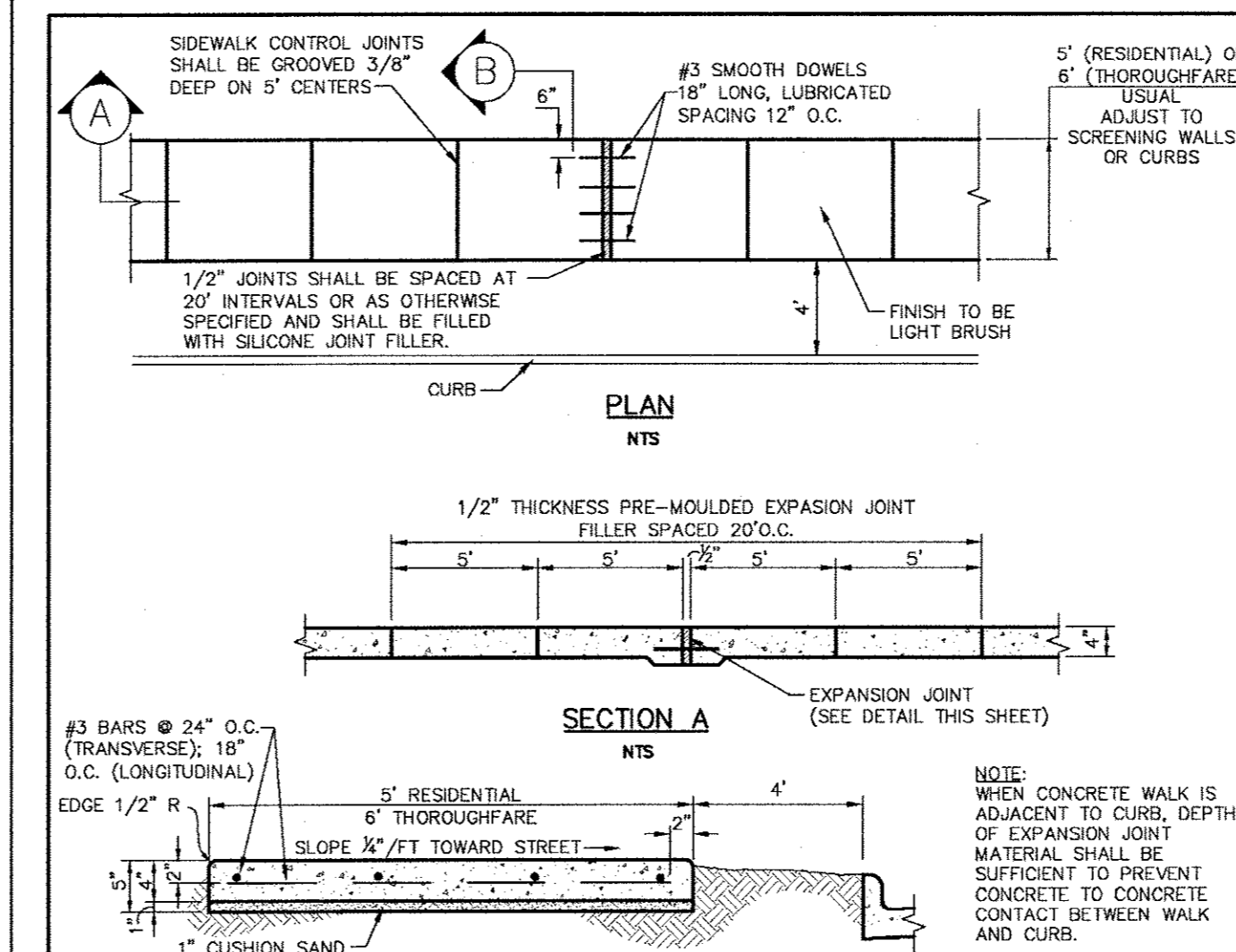


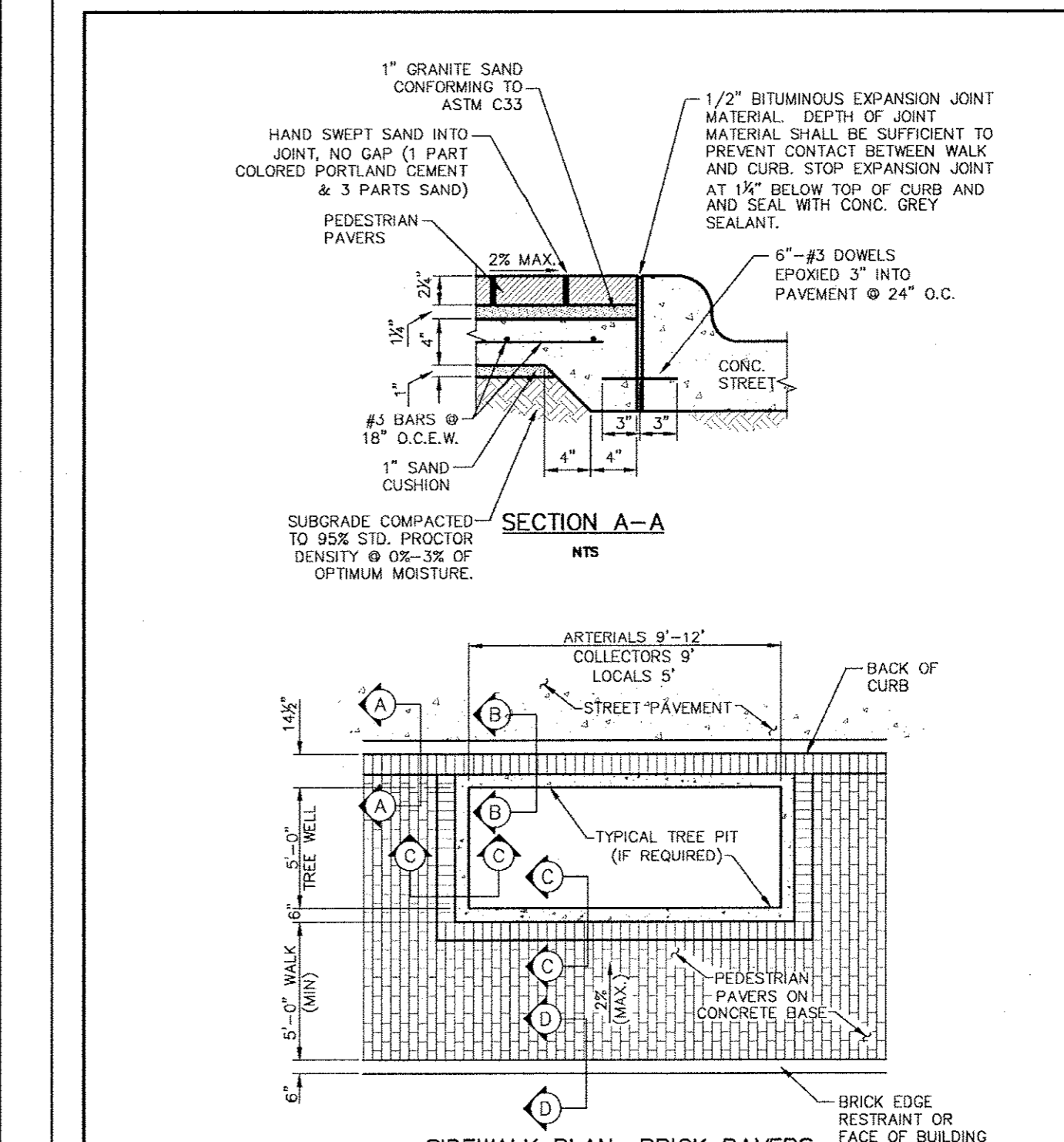
 PUBLIC WORKS DEPARTMENT	SPACING DIAGRAM FOR TRANSVERSE JOINTS	STANDARD CONSTRUCTION DETAILS PAVING	
		DATE: AUGUST, 2010	SHEET: 30-P22



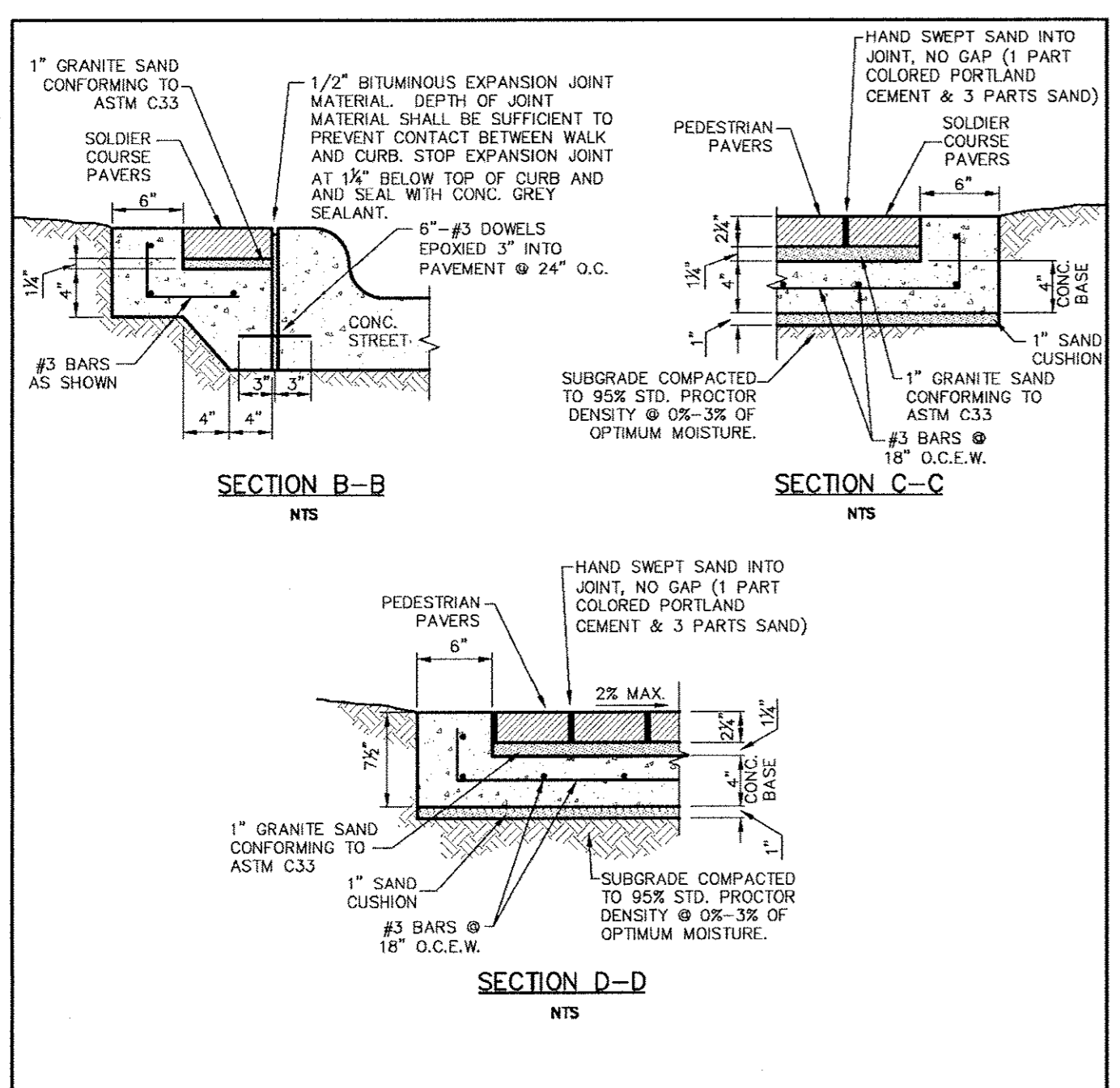
 PUBLIC WORKS DEPARTMENT	SIDEWALK WIDENING REQUIRED AROUND OBSTACLE IN SIDEWALK & JOINT DETAIL FOR SIDEWALKS ADJACENT TO CURB	STANDARD CONSTRUCTION DETAILS PAVING	
		DATE: AUGUST, 2010	SHEET: 30-P23



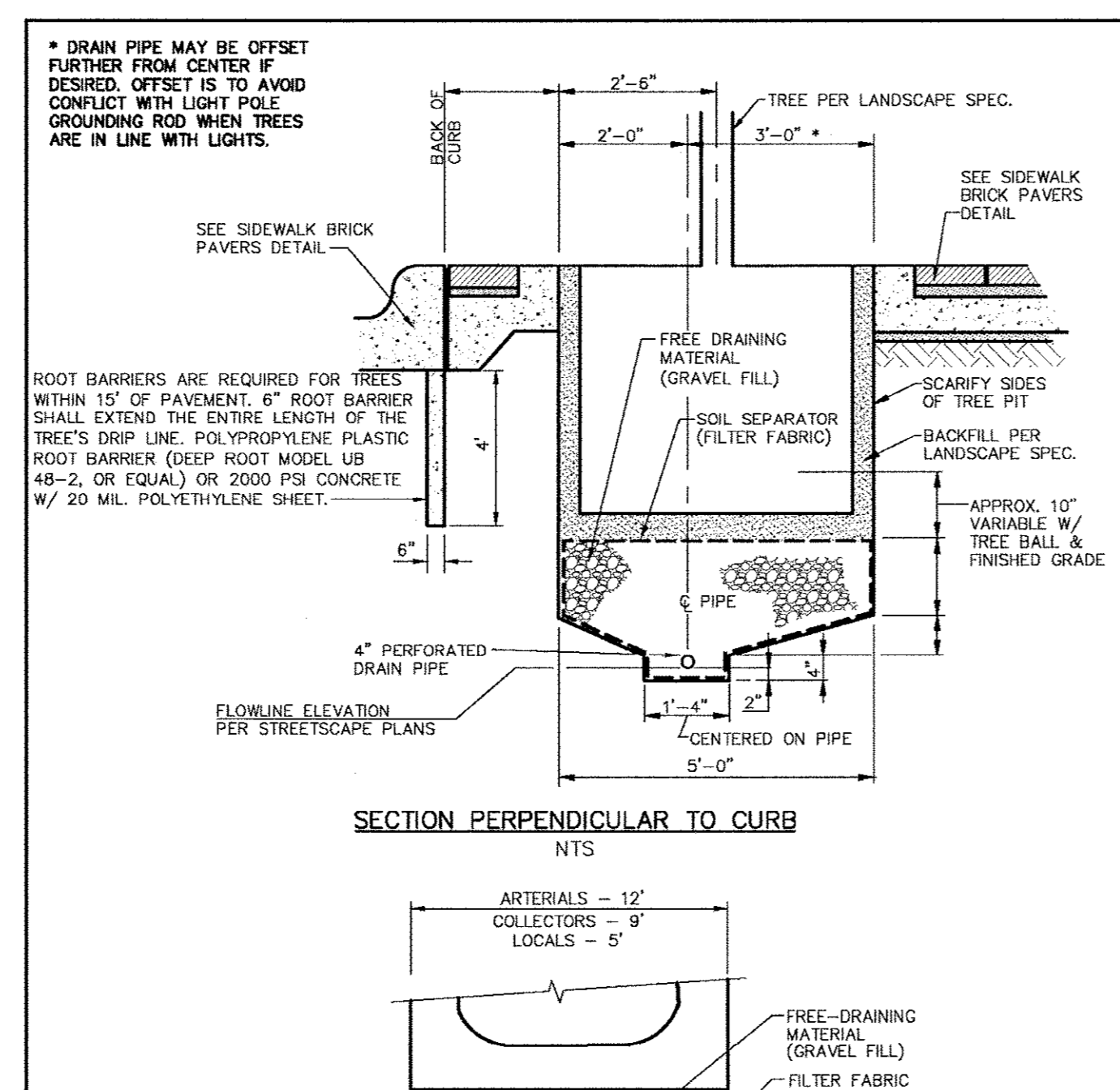
 PUBLIC WORKS DEPARTMENT	CONCRETE SIDEWALK	STANDARD CONSTRUCTION DETAILS PAVING	
		DATE: AUGUST, 2010	SHEET: 30-P26



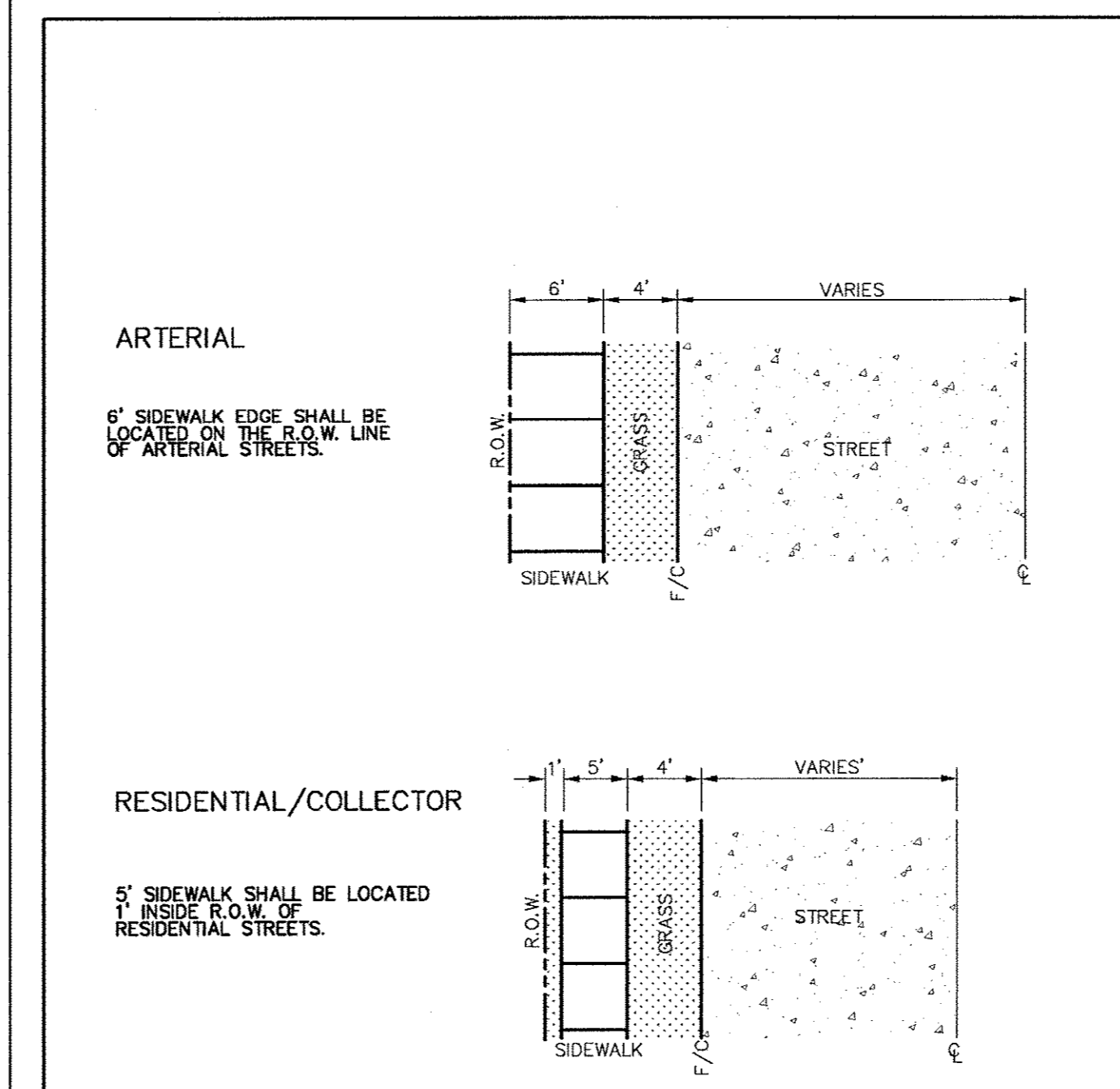
 PUBLIC WORKS DEPARTMENT	SIDEWALK BRICK PAVERS	STANDARD CONSTRUCTION DETAILS PAVING	
		DATE: AUGUST, 2010	SHEET: 30-P28



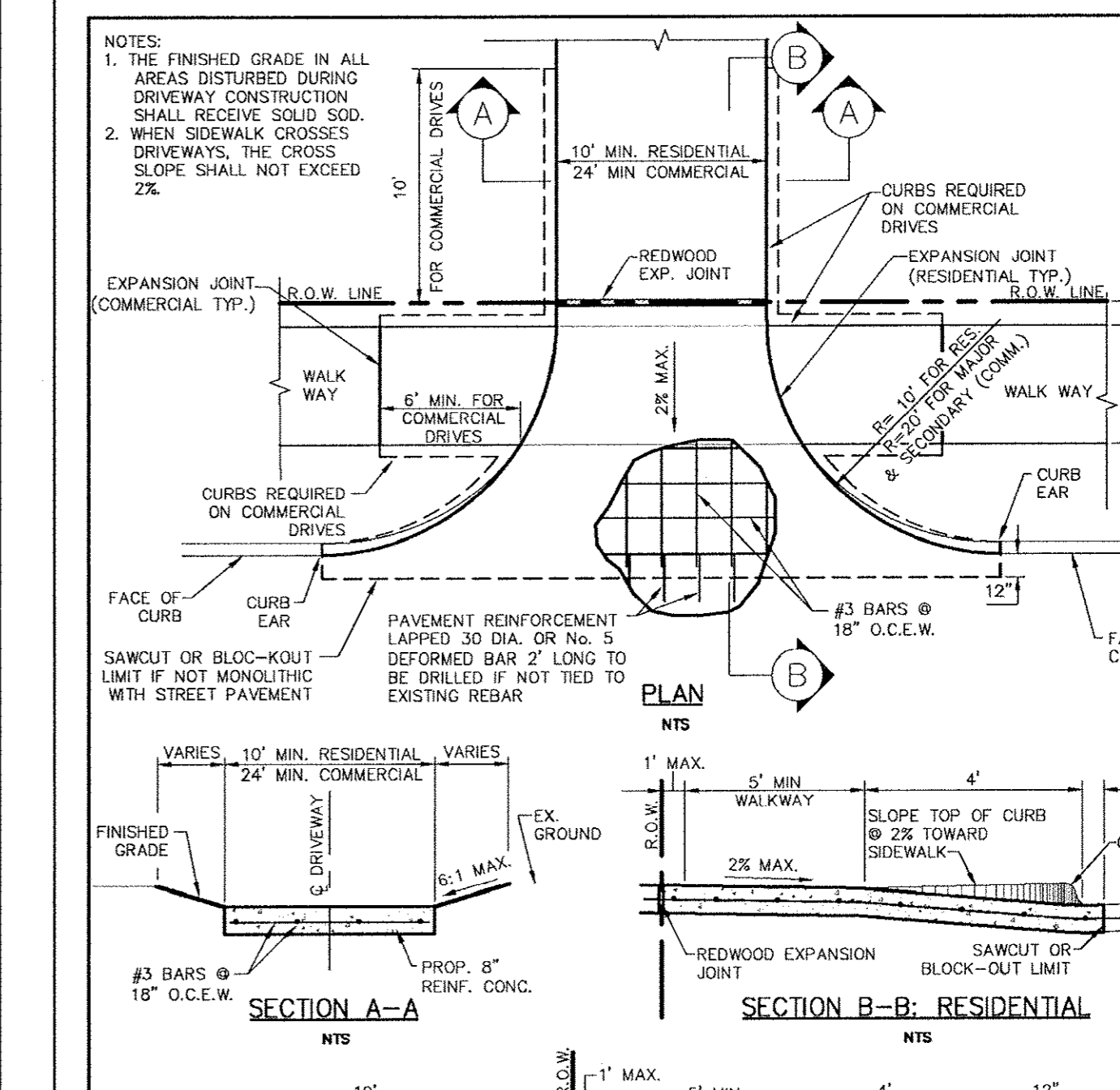
 PUBLIC WORKS DEPARTMENT	SIDEWALK BRICK PAVERS CONTINUED	STANDARD CONSTRUCTION DETAILS PAVING	
		DATE: AUGUST, 2010	SHEET: 30-P29



 PUBLIC WORKS DEPARTMENT	SUBSURFACE DRAIN SYSTEM	STANDARD CONSTRUCTION DETAILS PAVING	
		DATE: AUGUST, 2010	SHEET: 30-P30



 PUBLIC WORKS DEPARTMENT	CONCRETE SIDEWALK CONTINUED	STANDARD CONSTRUCTION DETAILS PAVING	
		DATE: AUGUST, 2010	SHEET: 30-P31



 PUBLIC WORKS DEPARTMENT	DRIVEWAY RETURN DETAILS	STANDARD CONSTRUCTION DETAILS PAVING	
		DATE: AUGUST, 2010	SHEET: 30-P32

Kimley-Horn and Associates, Inc.
 1000 N. TEXAS ST. SUITE 1000
 FORT WORTH, TX 76102-7000
 TEL: 817.339.9270 FAX: 817.339.9271
 WWW.KHACONLINE.COM

DAVID L. MEYERS
 81512
 REGISTERED PROFESSIONAL ENGINEER
 STATE OF TEXAS

Keller Springs Lofts
Loft Apartments in Addison
 Town of Addison, Texas

PAVING DETAILS

DATE: OCTOBER 11, 2011	DESIGN: KHA	CITY NO.:
DRAWN: KHA	CHECKED: KHA	
	KHA NO.: 064362003	
SHEET		