

**STORM SEWER — GENERAL NOTES:**

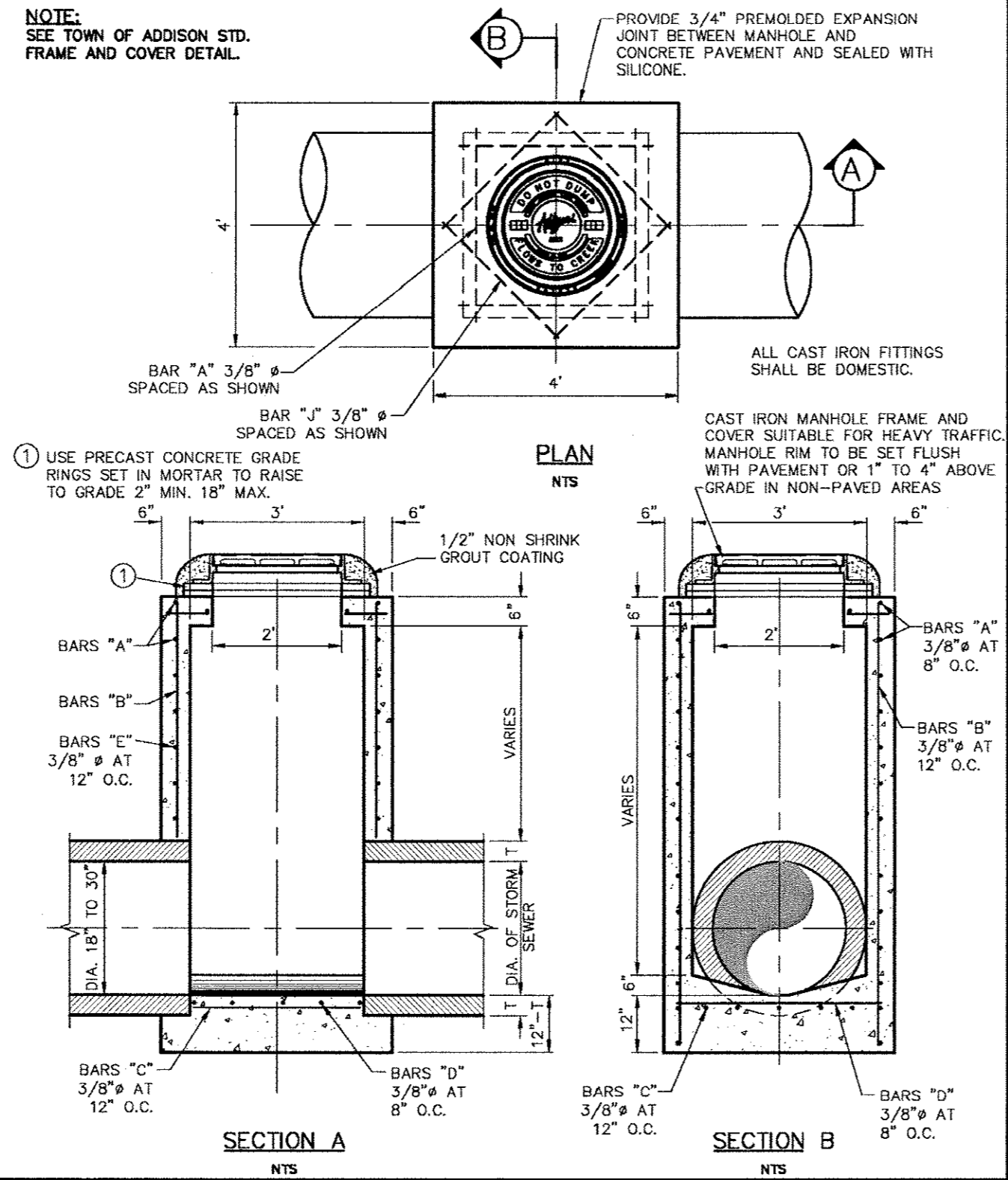
1. ALL CONCRETE DRAINAGE STRUCTURES SHALL BE CLASS C CONCRETE MINIMUM.
2. ALL CRUSHED STONE SHALL BE 3/4", PASSING #4 SIEVE (GRADE 4).
3. ALL FIELD JOINTS WILL BE APPROVED BY THE TOWN ENGINEER IF NECESSARY. FIELD JOINTS SHALL BE WIPED ON THE INSIDE AND OUTSIDE TO PROVIDE FOR SMOOTH FLOW OF WATER.
4. RAMNECK COMPOUND OR APPROVED EQUAL SHALL BE USED FOR JOINT SEALS.
5. ALL STORM SEWER PIPE SHALL BE CAMERA INSPECTED AFTER THE INSTALLATION OF ALL PAVING AND UTILITIES AND PRIOR TO FINAL ACCEPTANCE OF THE PROJECT.

*Addison!*  
PUBLIC WORKS DEPARTMENT

STORM SEWER  
GENERAL NOTES

STANDARD CONSTRUCTION DETAILS  
STORM DRAINAGE  
DATE: AUGUST, 2010 REV DATE: SHEET: SD-001

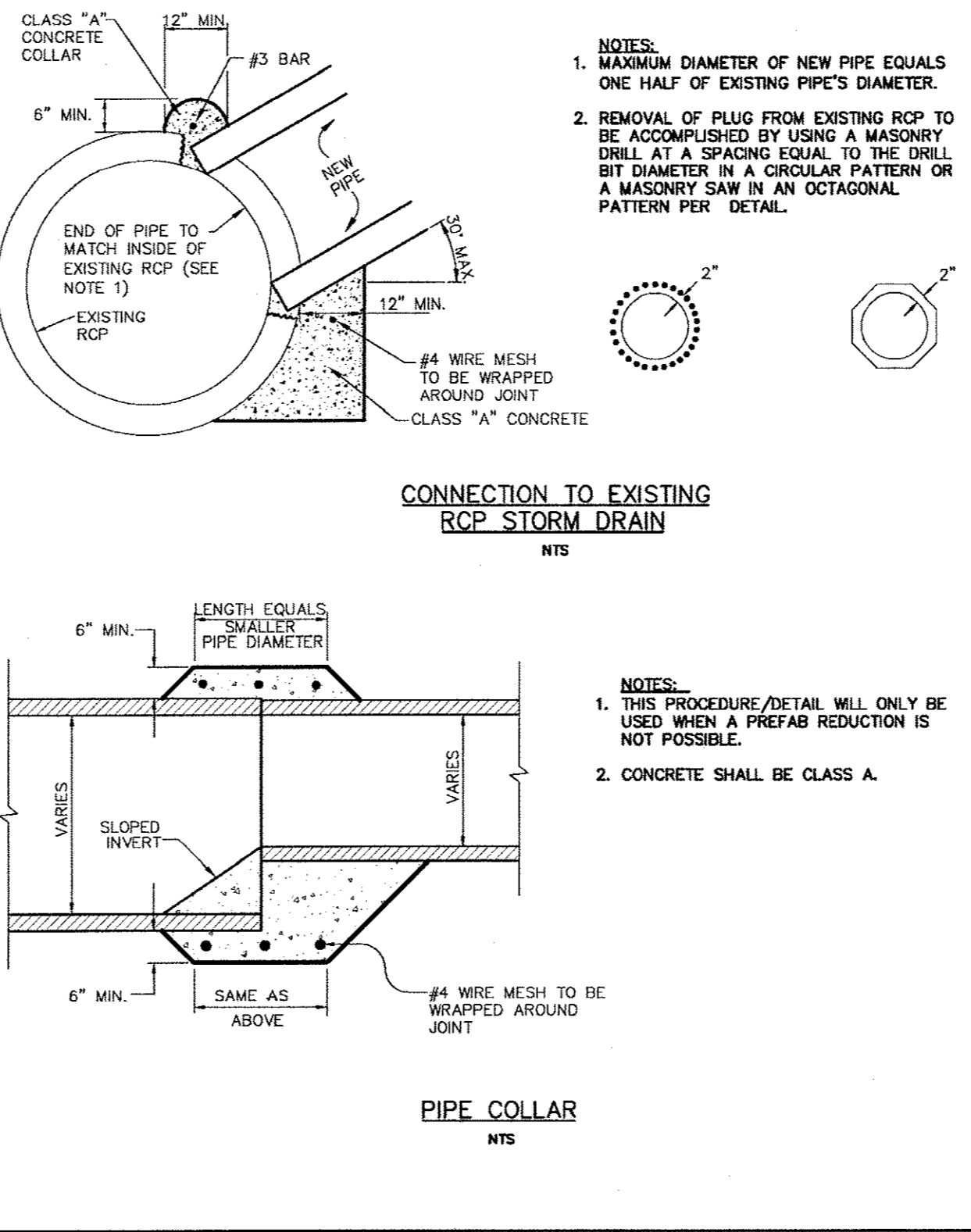
NOTE:  
SEE TOWN OF ADDISON STD.  
FRAME AND COVER DETAIL.



*Addison!*  
PUBLIC WORKS DEPARTMENT

TYPE "A" STORM SEWER  
MANHOLE  
(FOR 18" TO 30" RCP)

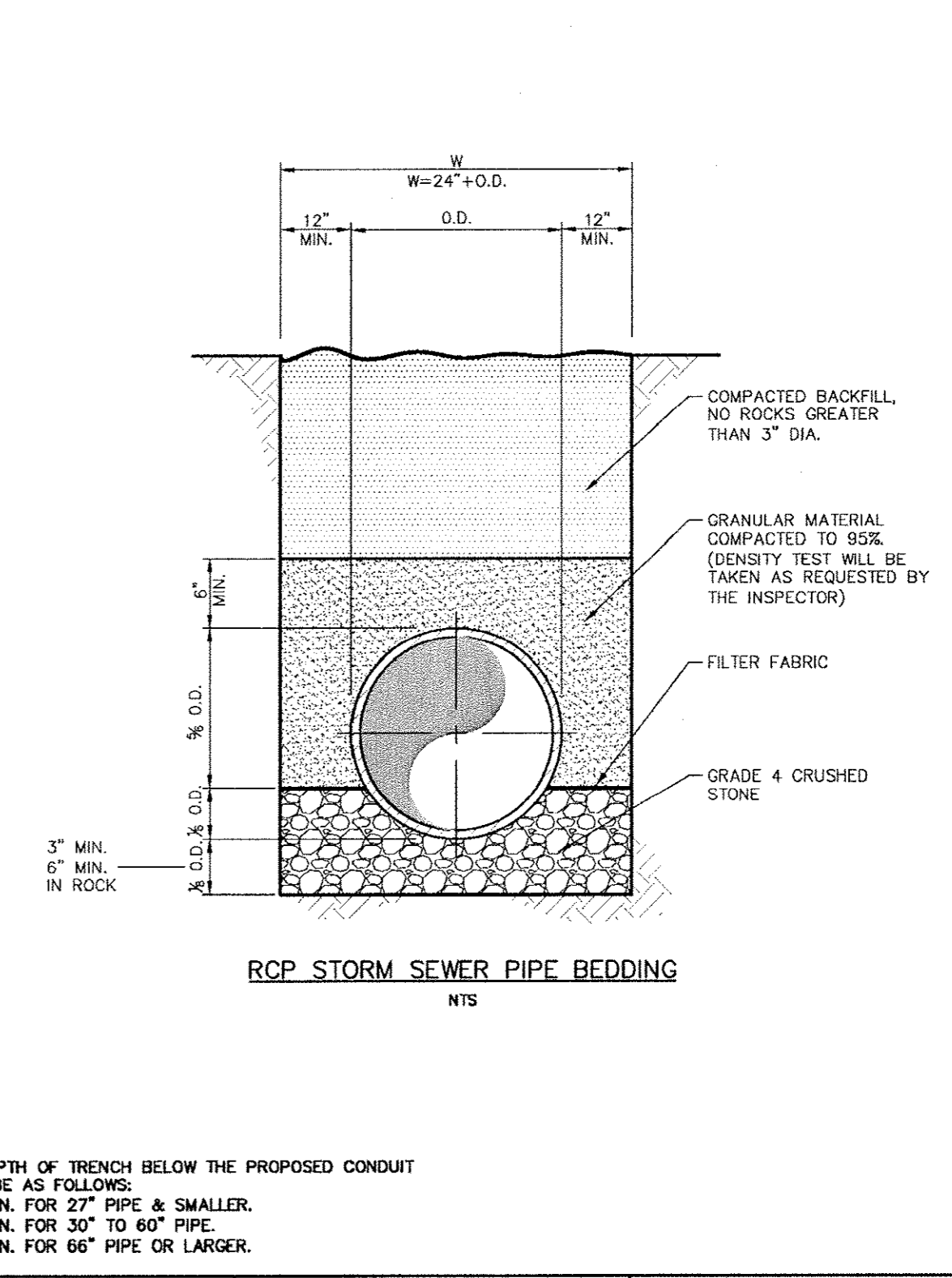
STANDARD CONSTRUCTION DETAILS  
STORM DRAINAGE  
DATE: AUGUST, 2010 REV DATE: SHEET: SD-005



*Addison!*  
PUBLIC WORKS DEPARTMENT

CONNECTION TO EXISTING  
RCP STORM DRAIN  
PIPE COLLAR

STANDARD CONSTRUCTION DETAILS  
STORM DRAINAGE  
DATE: AUGUST, 2010 REV DATE: SHEET: SD-005

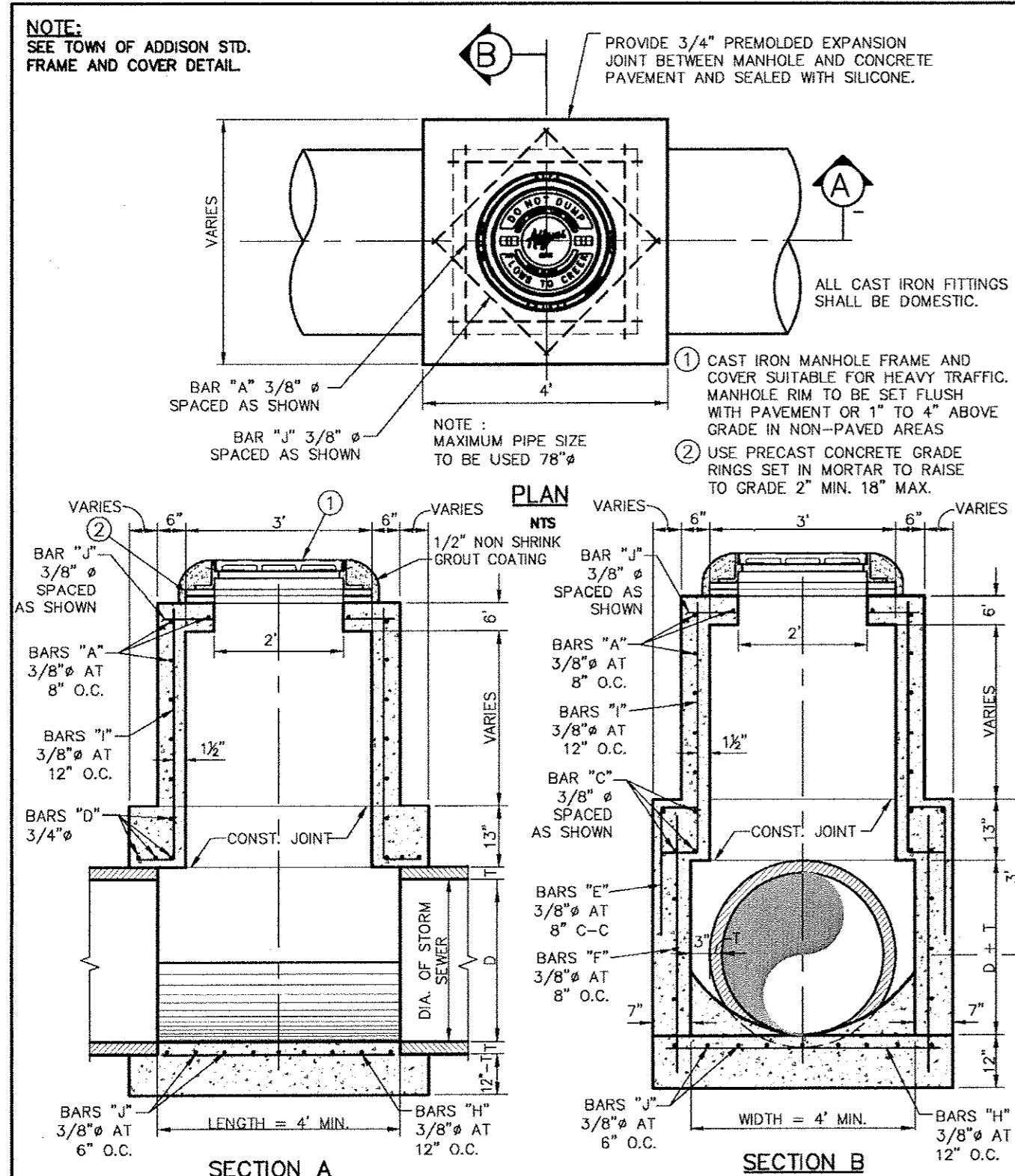


*Addison!*  
PUBLIC WORKS DEPARTMENT

RCP STORM SEWER  
PIPE BEDDING

STANDARD CONSTRUCTION DETAILS  
STORM DRAINAGE  
DATE: AUGUST, 2010 REV DATE: SHEET: SD-003

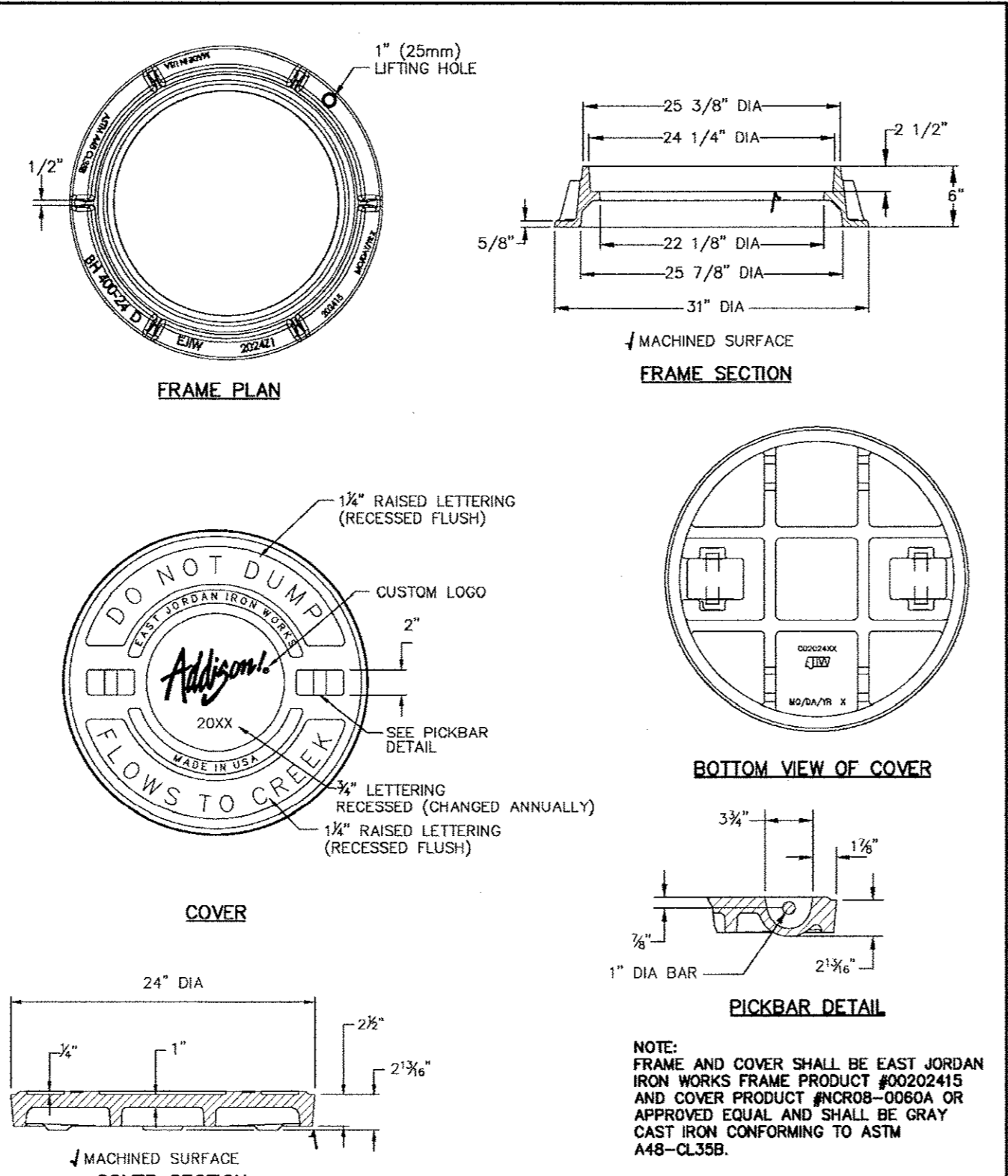
NOTE:  
SEE TOWN OF ADDISON STD.  
FRAME AND COVER DETAIL.



*Addison!*  
PUBLIC WORKS DEPARTMENT

TYPE "B" STORM SEWER  
MANHOLE  
(FOR 33" TO 78" RCP)

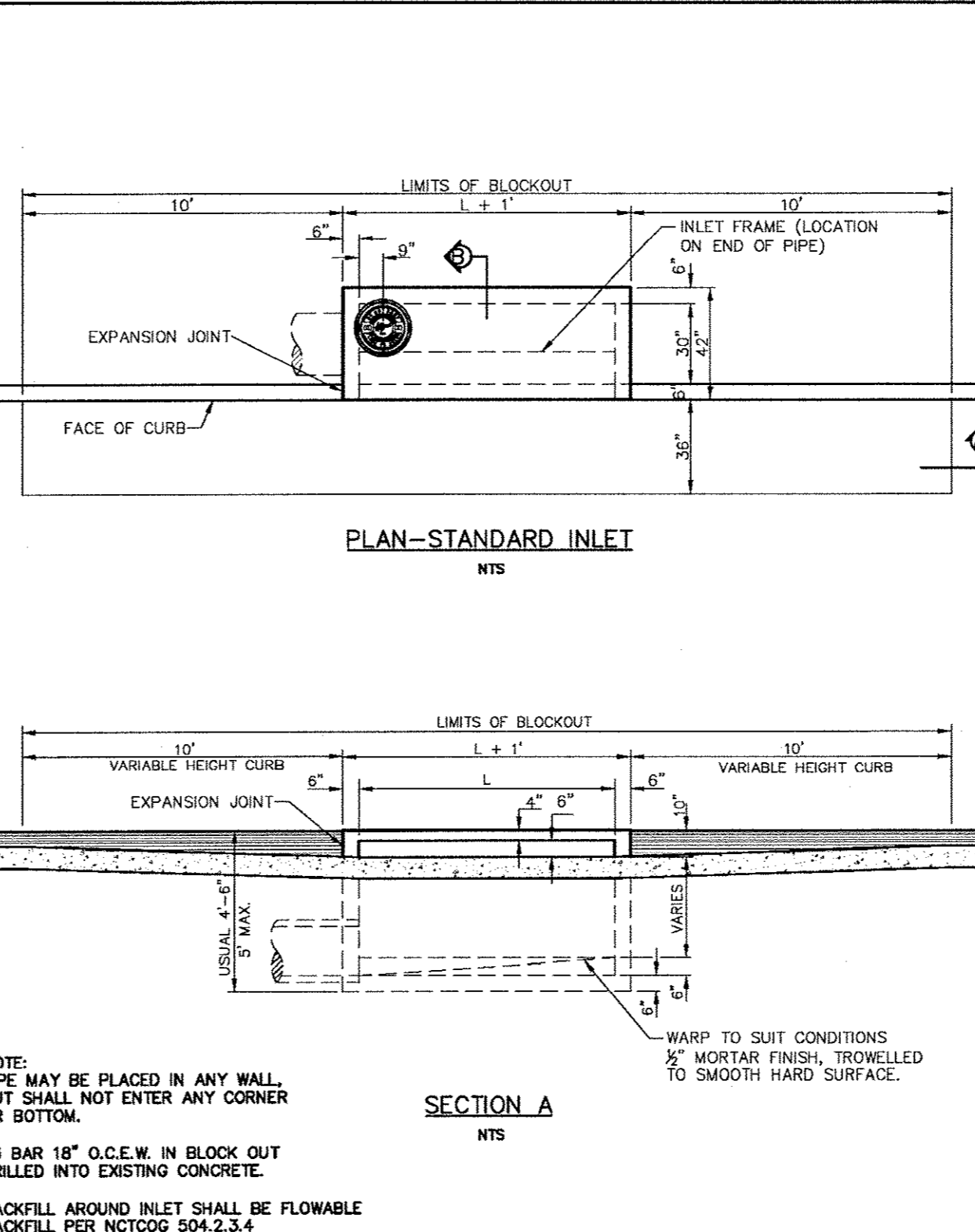
STANDARD CONSTRUCTION DETAILS  
STORM DRAINAGE  
DATE: AUGUST, 2010 REV DATE: SHEET: SD-007



*Addison!*  
PUBLIC WORKS DEPARTMENT

STORM MANHOLE  
FRAME & COVER

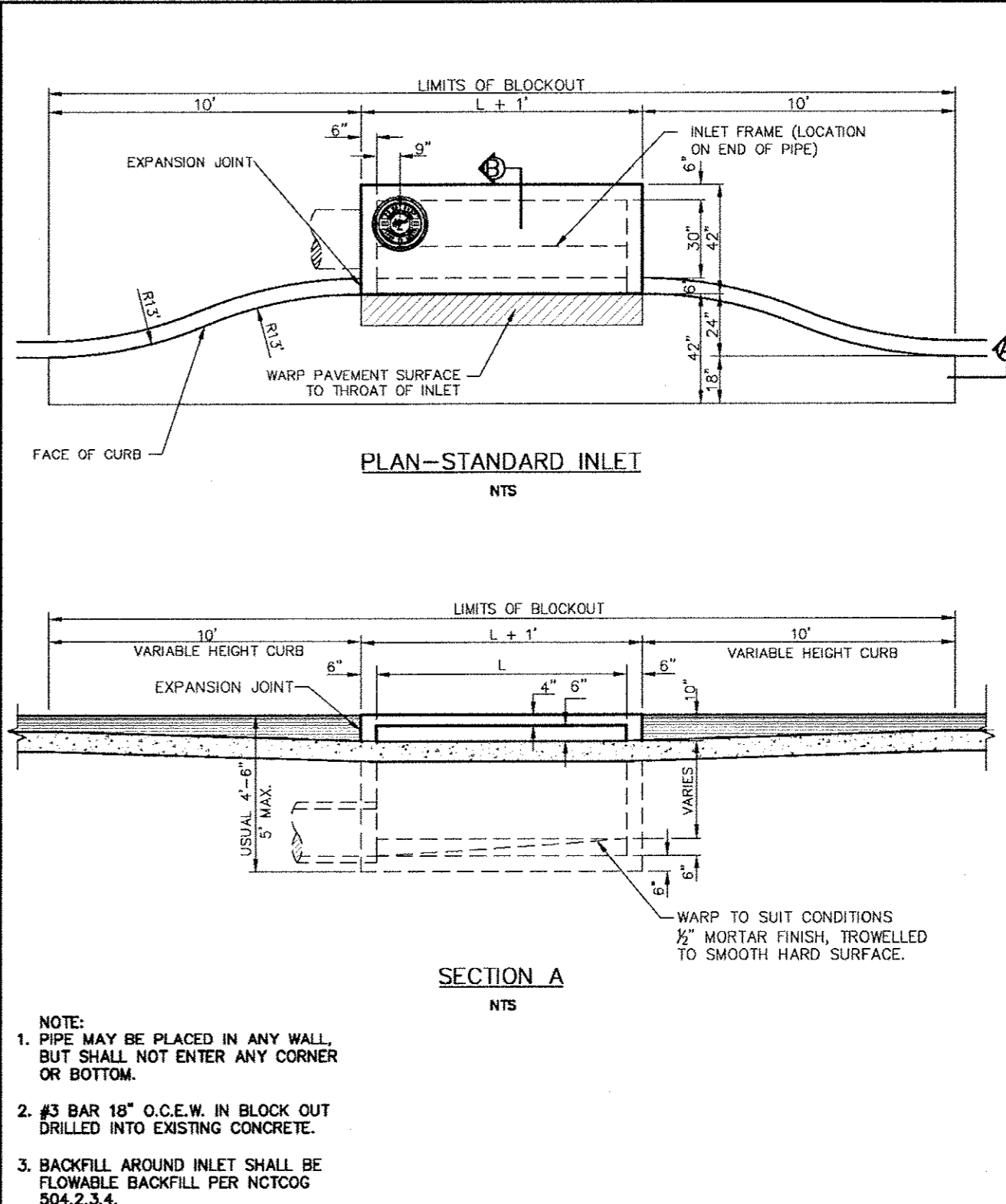
STANDARD CONSTRUCTION DETAILS  
STORM DRAINAGE  
DATE: AUGUST, 2010 REV DATE: SHEET: SD-008



*Addison!*  
PUBLIC WORKS DEPARTMENT

STANDARD CURB INLET

STANDARD CONSTRUCTION DETAILS  
STORM DRAINAGE  
DATE: AUGUST, 2010 REV DATE: SHEET: SD-010



*Addison!*  
PUBLIC WORKS DEPARTMENT

RECESSED CURB INLET

STANDARD CONSTRUCTION DETAILS  
STORM DRAINAGE  
DATE: AUGUST, 2010 REV DATE: SHEET: SD-011

Kimley-Horn  
and Associates, Inc.  
1000 West 11th Street, Suite 800  
Dallas, TX 75201-8888  
Phone: 972-770-8000  
Fax: 972-770-8888

STATE OF TEXAS  
DAVID E. MEYERS  
REGISTERED PROFESSIONAL ENGINEER  
No. 81512  
12/11/2011

**Keller Springs Lofts**  
**Loft Apartments in Addison**  
Town of Addison, Texas

**STORM WATER DETAILS**

DATE: OCTOBER 11, 2011  
DESIGN: KHA  
DRAWN: KHA  
CHECKED: KHA  
KHA NO.: 064-362003  
CITY NO.:

SHEET  
**C13**