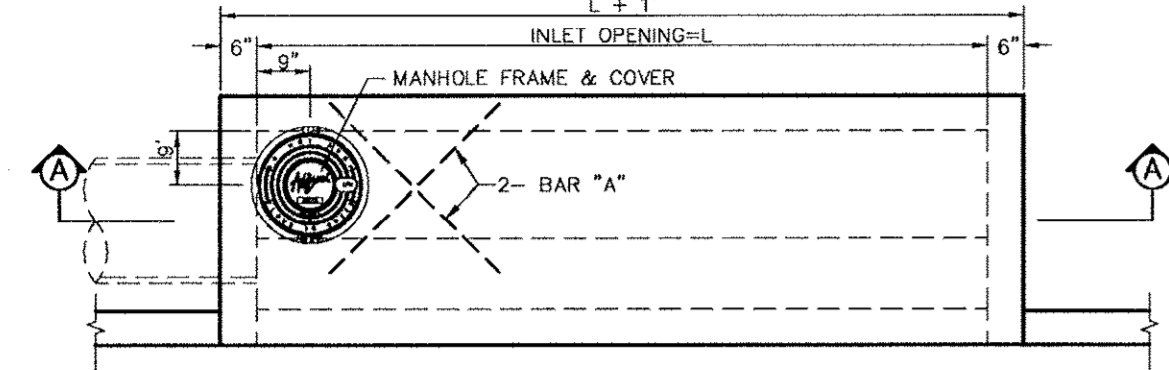
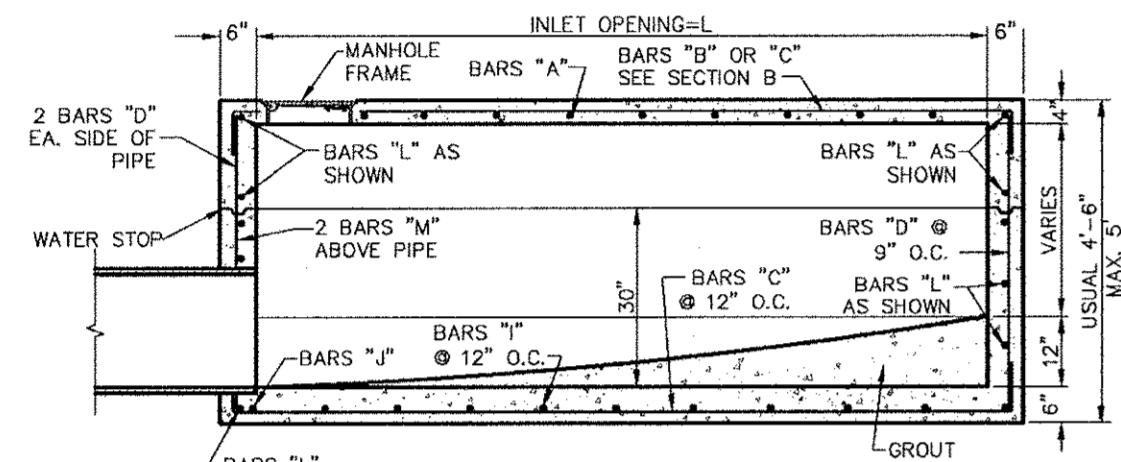


NOTE: REINFORCEMENT SHOWN IS ADDITIONAL FOR SPECIAL CONDITION, FOR REMAINDER OF REINFORCEMENT SEE SECTIONS.



PLAN-STANDARD INLET  
NTS

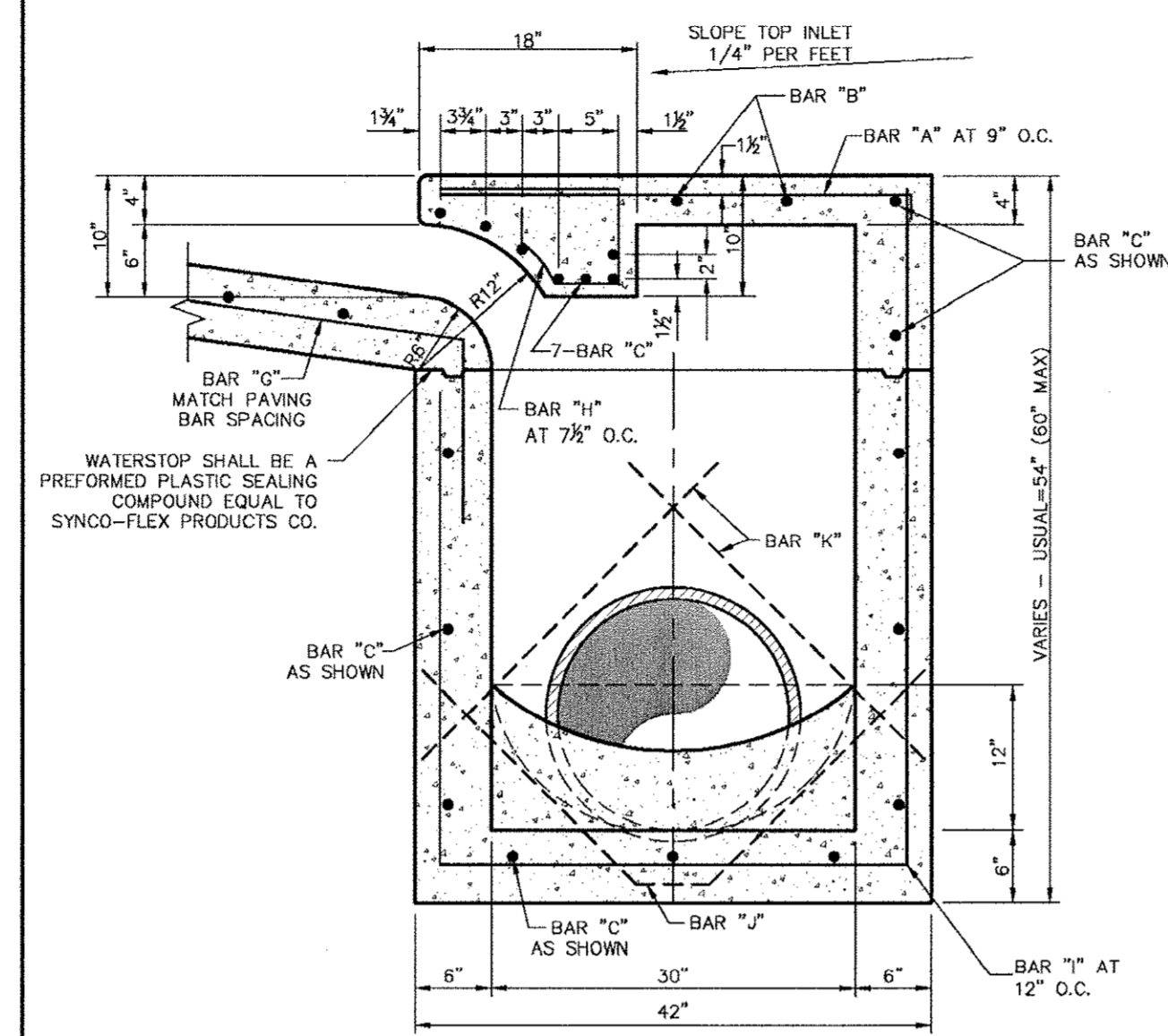


SECTION A  
NTS

**Addison!**  
PUBLIC WORKS DEPARTMENT

STANDARD CURB INLET 4, 6, 8 & 10 FOOT INLETS

STANDARD CONSTRUCTION DETAILS  
STORM DRAINAGE  
DATE: AUGUST, 2010 REV DATE: SHEET: SD-012



SECTION "B"  
NTS

**Addison!**  
PUBLIC WORKS DEPARTMENT

TYPICAL SECTION "B" STANDARD & RECESSED CURB INLETS (4, 6, 8 & 10 FOOT INLETS)

STANDARD CONSTRUCTION DETAILS  
STORM DRAINAGE  
DATE: AUGUST, 2010 REV DATE: SHEET: SD-013

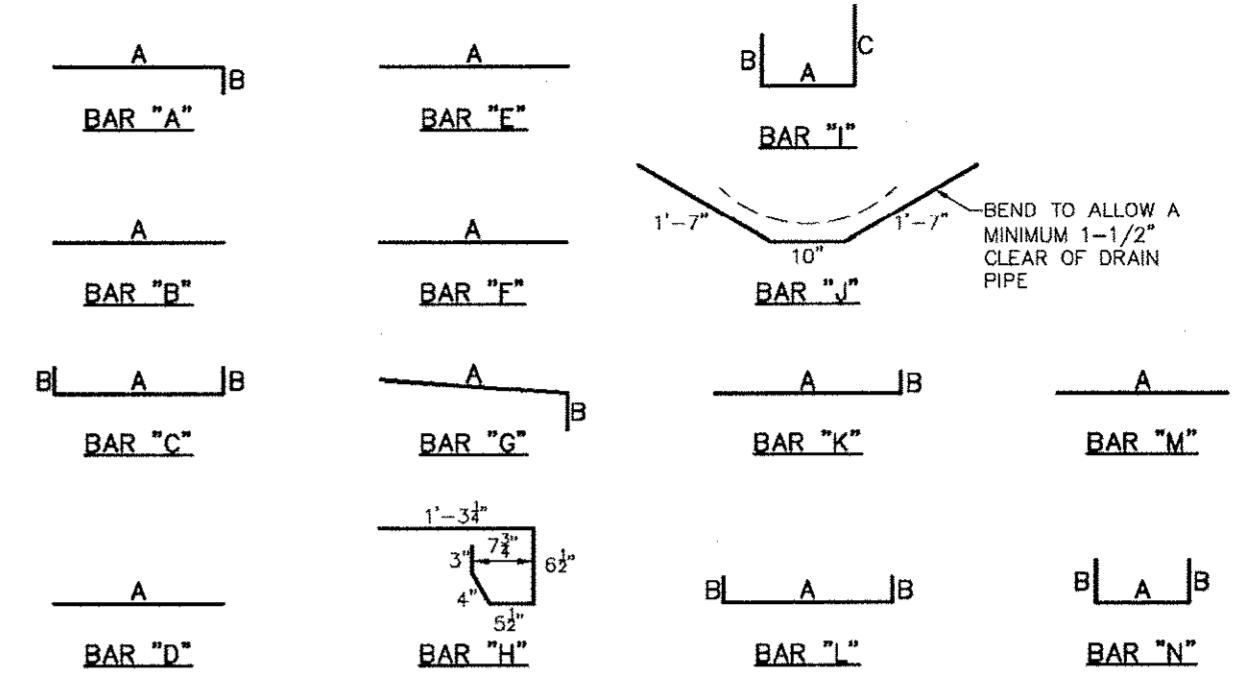
INLET LENGTH	BAR TYPE	BAR DIA (1/8")	NO REQ'D	BAR DIMENSIONS		
				A	B	C
4'	A	3	6	3'-2"	0'-3"	-
4'	B	3	2	2'-10"	0'-6"	-
4'	C	4	18	4'-8"	0'-5"	-
4'	D	4	9	4'-8"	-	-
4'	G	3	4	2'-0"	1'-3"	-
4'	H	3	7	-	-	-
4'	I	4	3	3'-2"	3'-2"	4'-8"
4'	J	5	1	-	-	-
4'	K	5	2	3'-2"	0'-6"	-
4'	L	4	11	3'-2"	0'-6"	-
4'	M	4	2	3'-0"	-	-
6'	A	3	9	3'-2"	0'-3"	-
6'	B	3	2	4'-10"	-	-
6'	C	4	18	8'-6"	0'-6"	-
6'	D	4	9	4'-8"	-	-
6'	G	3	6	2'-0"	1'-3"	-
6'	H	3	11	-	-	-
6'	I	4	5	3'-2"	3'-2"	4'-8"
6'	J	5	1	-	-	-
6'	K	5	2	3'-2"	0'-6"	-
6'	L	4	11	3'-2"	0'-6"	-
6'	M	4	2	3'-0"	-	-
8'	A	3	12	3'-2"	0'-3"	-
8'	B	3	2	6'-10"	-	-
8'	C	4	18	10'-8"	0'-6"	-
8'	D	4	9	4'-8"	-	-
8'	G	3	7	2'-0"	1'-3"	-
8'	H	3	14	-	-	-
8'	I	4	7	3'-2"	3'-2"	4'-8"
8'	J	5	1	-	-	-
8'	K	5	2	3'-2"	0'-6"	-
8'	L	4	11	3'-2"	0'-6"	-
8'	M	4	2	3'-0"	-	-
10'	A	3	15	3'-2"	0'-3"	-
10'	B	3	2	8'-10"	-	-
10'	C	4	18	10'-8"	0'-6"	-
10'	D	4	9	4'-8"	-	-
10'	G	3	9	2'-0"	1'-3"	-
10'	H	3	17	-	-	-
10'	I	4	9	3'-2"	3'-2"	4'-8"
10'	J	5	1	-	-	-
10'	K	5	2	3'-2"	0'-6"	-
10'	L	4	11	3'-2"	0'-6"	-
10'	M	4	2	3'-0"	-	-

\* SEE DIAGRAM FOR DIMENSIONS  
\*\* FIELD CUT AS REQUIRED TO ACCOMMODATE DRAIN PIPE

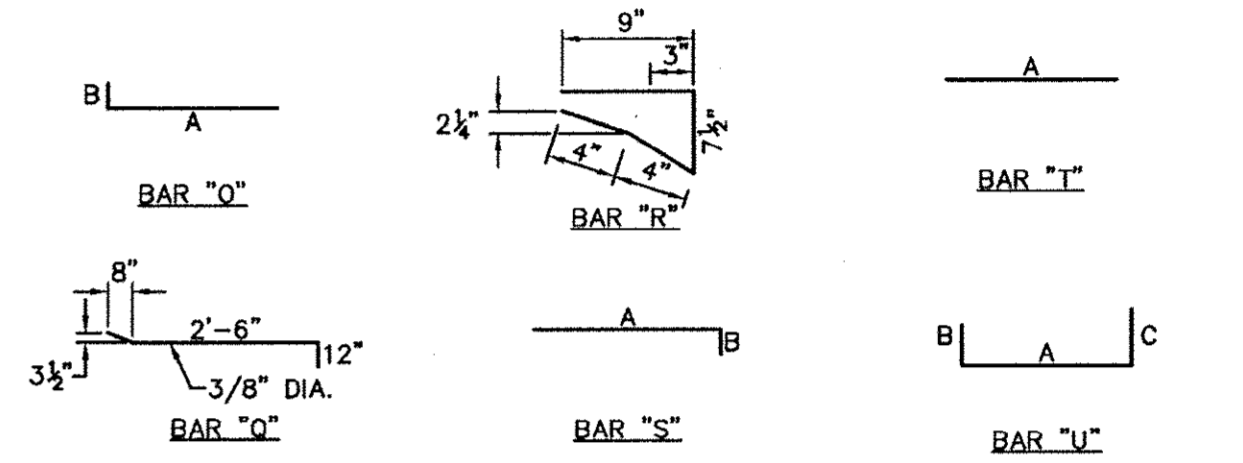
**Addison!**  
PUBLIC WORKS DEPARTMENT

REINFORCING STEEL SCHEDULE 4, 6, 8 & 10 FOOT INLETS

STANDARD CONSTRUCTION DETAILS  
STORM DRAINAGE  
DATE: AUGUST, 2010 REV DATE: SHEET: SD-014



REINFORCING BAR DIAGRAMS  
NTS



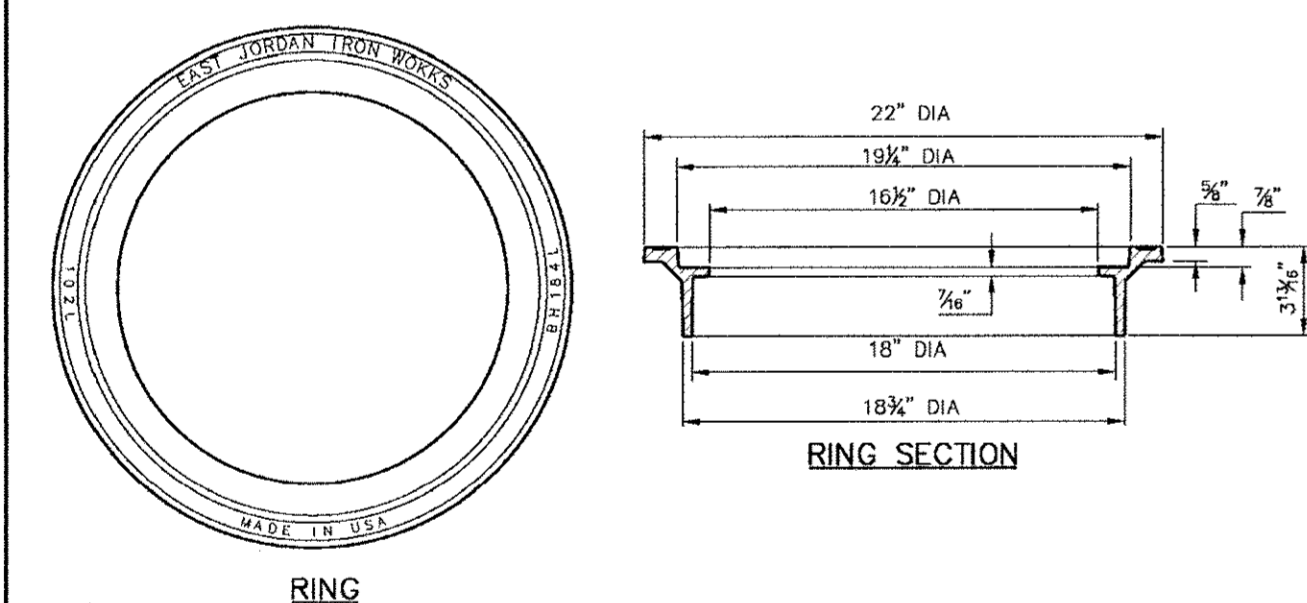
BAR DIAGRAMS (BRICK ON INLET)  
NTS

NOTE: BAR DESIGNATIONS AND DIMENSIONS ARE DIFFERENT FROM STEEL SCHEDULE FOR REGULAR INLETS

**Addison!**  
PUBLIC WORKS DEPARTMENT

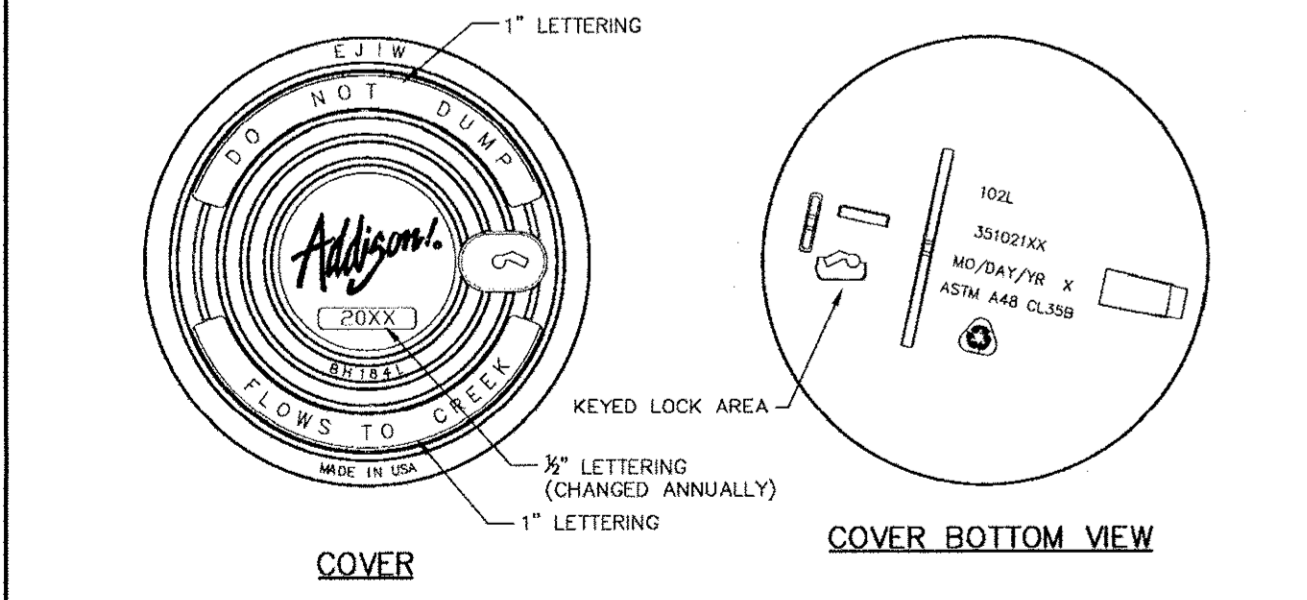
REINFORCING BAR DIAGRAMS

STANDARD CONSTRUCTION DETAILS  
STORM DRAINAGE  
DATE: AUGUST, 2010 REV DATE: SHEET: SD-015



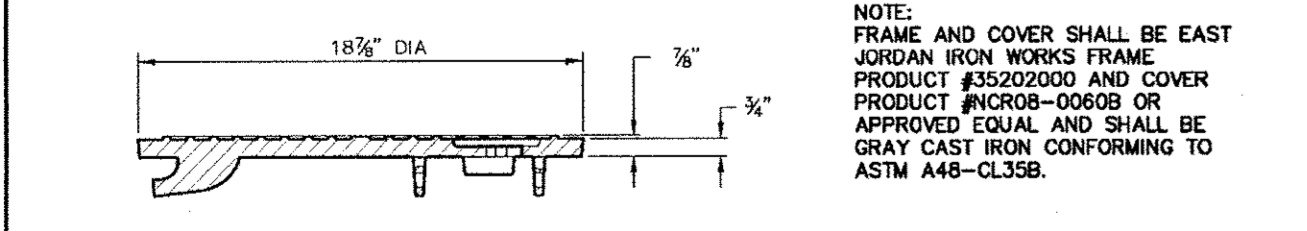
RING

RING SECTION



COVER

COVER BOTTOM VIEW



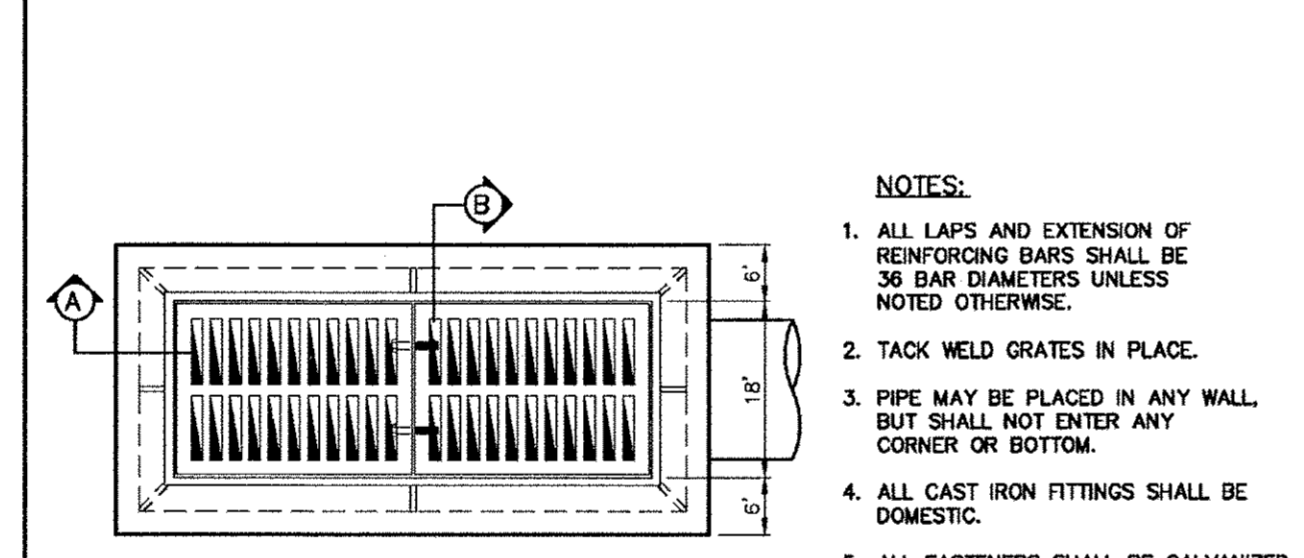
COVER SECTION

NOTE: FRAME AND COVER SHALL BE EAST JORDAN IRON WORKS FRAME PRODUCT #EJ2020000 AND COVER PRODUCT #NCROB-00809 OR APPROVED EQUAL AND SHALL BE GRAY CAST IRON CONFORMING TO ASTM A48-CL35B.

**Addison!**  
PUBLIC WORKS DEPARTMENT

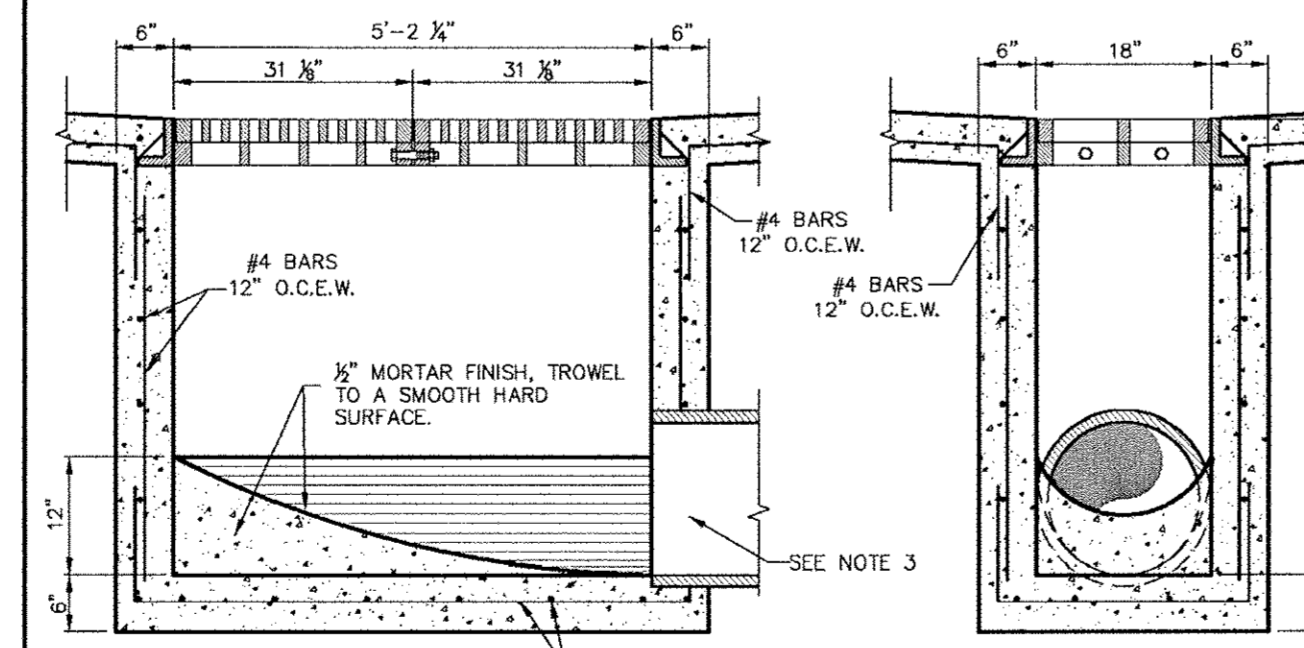
INLET FRAME & COVER

STANDARD CONSTRUCTION DETAILS  
STORM DRAINAGE  
DATE: AUGUST, 2010 REV DATE: SHEET: SD-014



PLAN  
NTS

- NOTES:
1. ALL LAPS AND EXTENSION OF REINFORCING BARS SHALL BE 36 BAR DIAMETERS UNLESS NOTED OTHERWISE.
  2. TACK WELD GRATES IN PLACE.
  3. PIPE MAY BE PLACED IN ANY WALL BUT SHALL NOT ENTER ANY CORNER OR BOTTOM.
  4. ALL CAST IRON FITTINGS SHALL BE DOMESTIC.
  5. ALL FASTENERS SHALL BE GALVANIZED.



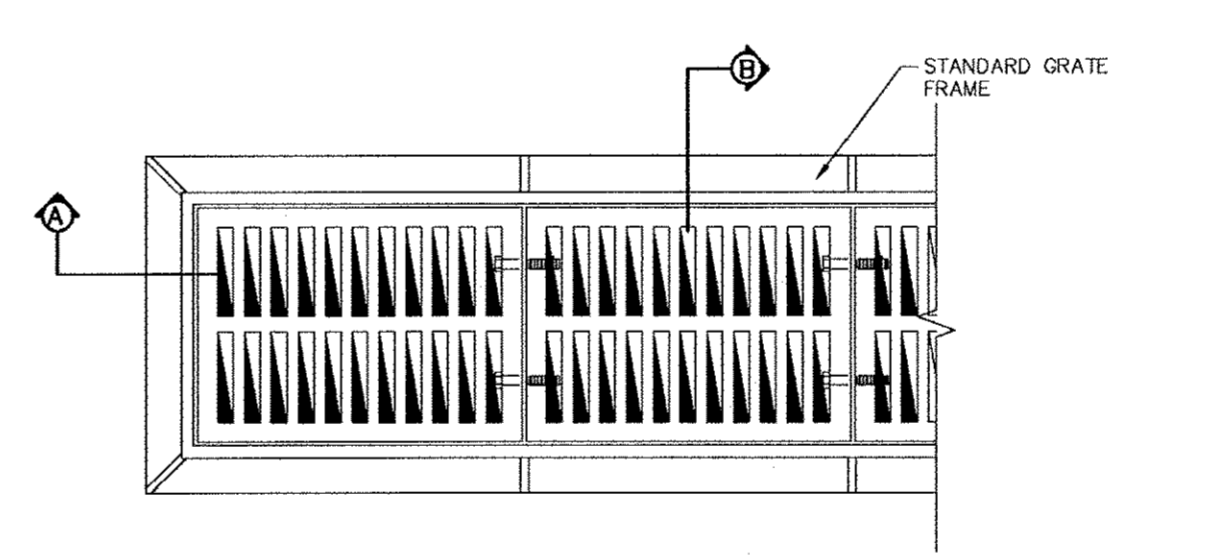
SECTION A  
NTS

SECTION B  
NTS

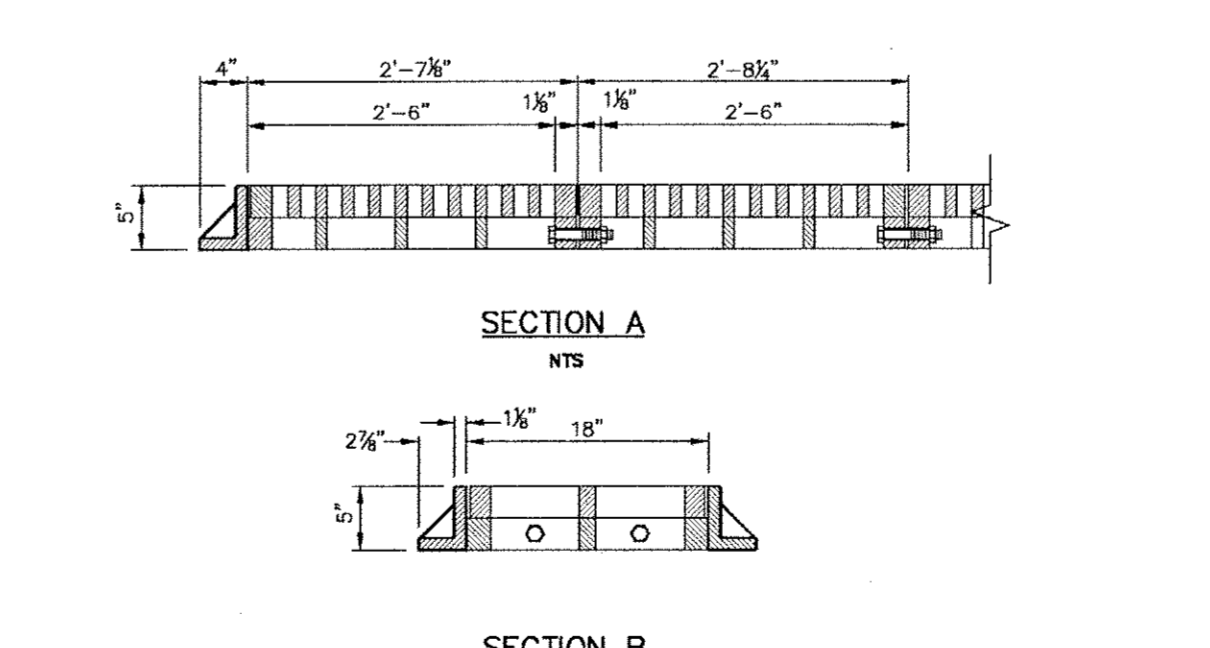
**Addison!**  
PUBLIC WORKS DEPARTMENT

TWO GRATE INLET

STANDARD CONSTRUCTION DETAILS  
STORM DRAINAGE  
DATE: AUGUST, 2010 REV DATE: SHEET: SD-016



PLAN  
NTS



SECTION A  
NTS

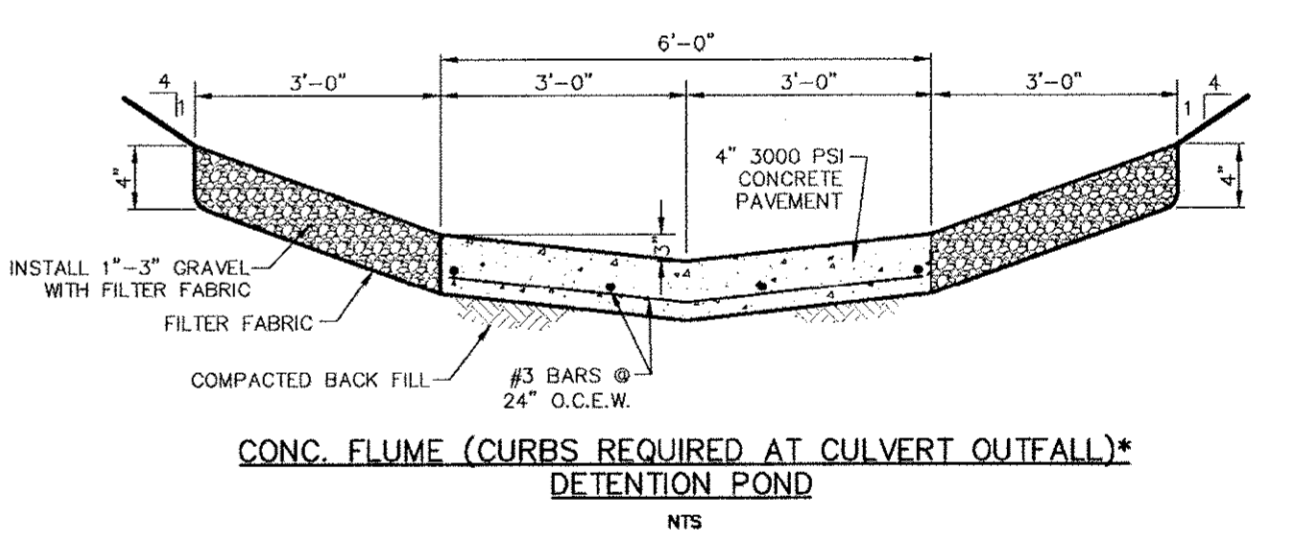
SECTION B  
NTS

- NOTES:
1. GRATE AND FRAME SHALL BE PATTERN NO. 814 AS MANUFACTURED BY BASS AND HAYES FOUNDRY OR APPROVED EQUAL.
  2. ALL CAST IRON FITTINGS SHALL BE DOMESTIC.
  3. ALL FASTENERS SHALL BE GALVANIZED.

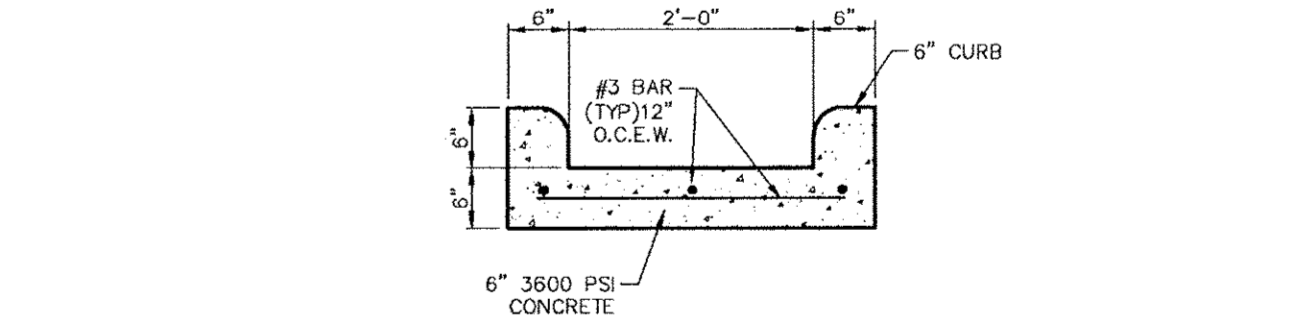
**Addison!**  
PUBLIC WORKS DEPARTMENT

GRATE DETAIL

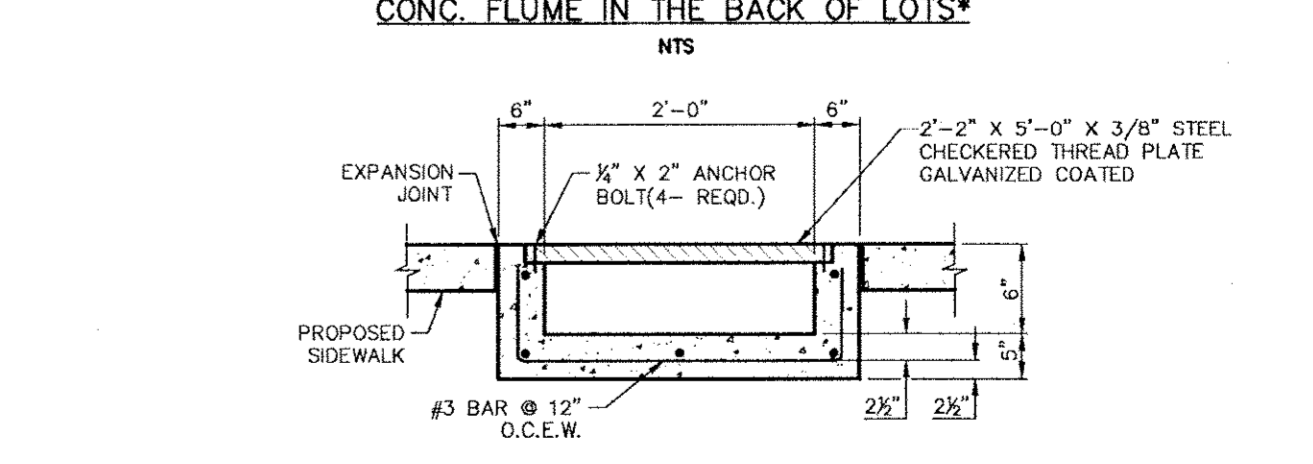
STANDARD CONSTRUCTION DETAILS  
STORM DRAINAGE  
DATE: AUGUST, 2010 REV DATE: SHEET: SD-014



CONC. FLUME (CURBS REQUIRED AT CULVERT OUTFALL)\*  
DETENTION POND  
NTS



CONC. FLUME IN THE BACK OF LOTS\*  
NTS



CONC. FLUME WITH PLATE COVER\*  
NTS

\*FOR ALL FLUMES THE MINIMUM SLOPE WILL BE 0.75%

**Addison!**  
PUBLIC WORKS DEPARTMENT

STORM RELATED FLUMES

STANDARD CONSTRUCTION DETAILS  
STORM DRAINAGE  
DATE: AUGUST, 2010 REV DATE: SHEET: SD-015

Kimley-Horn and Associates, Inc.  
1000 WEST 11TH STREET, SUITE 200  
DALLAS, TEXAS 75208  
TEL: 972.382.7270  
FAX: 972.382.7271

STATE OF TEXAS  
DAVID E. MEYERS  
REGISTERED PROFESSIONAL ENGINEER  
NO. 11512  
EXPIRES 12/31/2011

Keller Springs Lofts  
Loft Apartments in Addison  
Town of Addison, Texas

STORM WATER DETAILS

DATE: OCTOBER 11, 2011  
DESIGN: KHA  
DRAWN: KHA  
CHECKED: KHA  
KHA NO.: 064362003  
CITY NO.:

SHEET  
C14