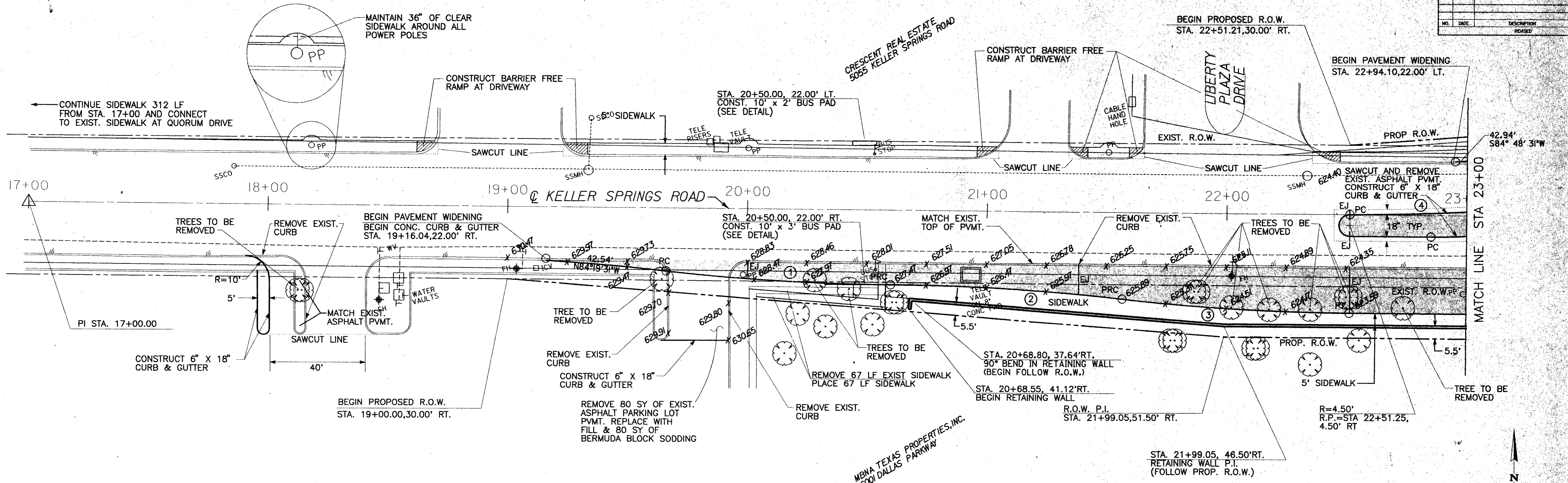
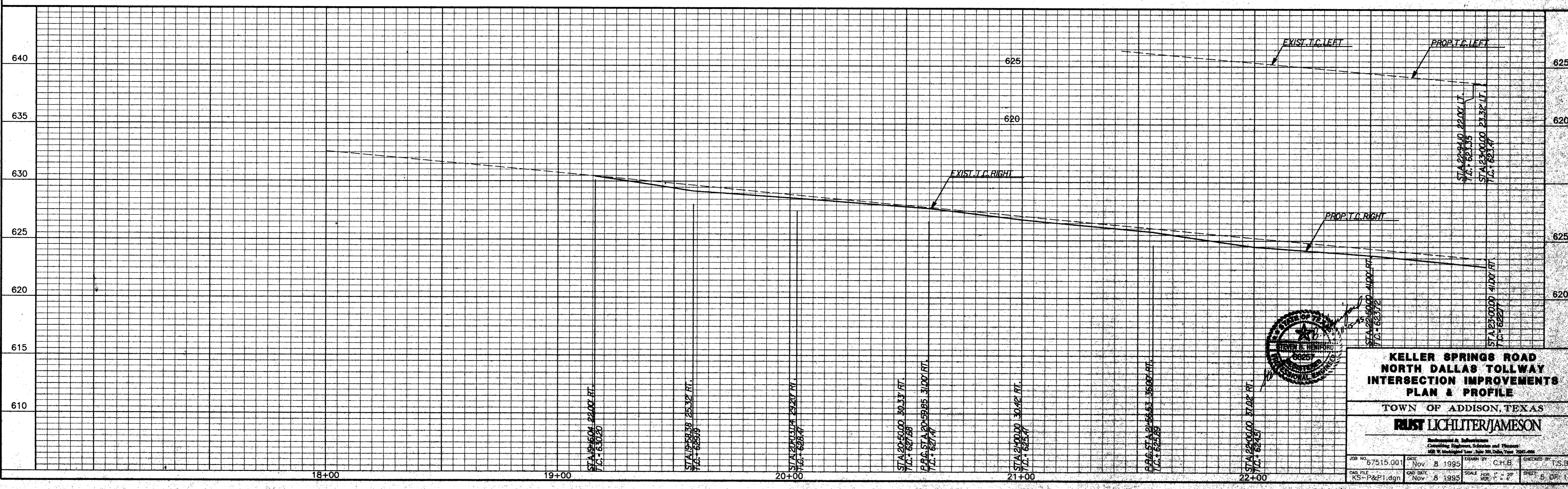
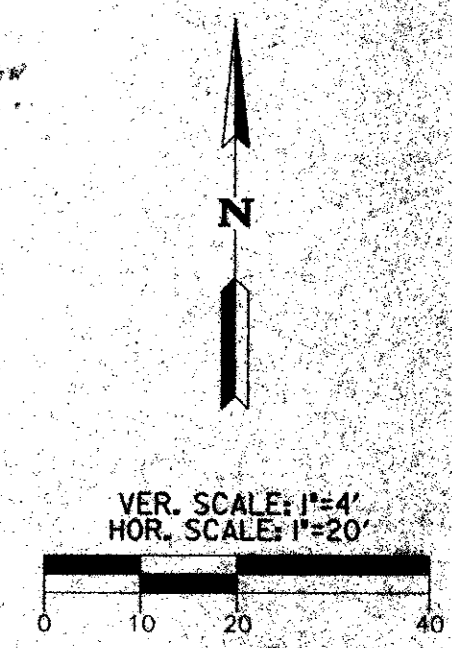


NO.	DATE	DESCRIPTION	BY



<p><b>CURVE DATA 1</b>  PC STA 19+66.22, 26.11' RT.  PI STA 20+31.42, 31.00' RT.  PT STA 20+59.85, 31.00' RT.  <math>\Delta=05^{\circ}58'17''</math>  R=900.00  L=93.80  T=46.94</p>	<p><b>CURVE DATA 2</b>  PC STA 20+59.85, 31.00' RT.  PI STA 21+08.33, 30.90' RT.  PT STA 21+56.53, 36.00' RT.  <math>\Delta=06^{\circ}09'58''</math>  R=900.00  L=96.86  T=48.48</p>	<p><b>CURVE DATA 3</b>  PC STA 21+56.53, 36.00' RT.  PI STA 22+03.77, 41.00' RT.  PT STA 22+51.27, 41.00' RT.  <math>\Delta=06^{\circ}02'32''</math>  R=900.00  L=94.91  T=47.50</p>	<p><b>CURVE DATA 4</b>  PC STA 22+51.18, 22.00' LT.  PI STA 22+94.10, 22.18' LT.  PT STA 23+36.80, 26.45' LT.  <math>\Delta=05^{\circ}27'37''</math>  R=900.00  L=85.77  T=42.92</p>
--	--	--	--



**KELLER SPRINGS ROAD  
NORTH DALLAS TOLLWAY  
INTERSECTION IMPROVEMENTS  
PLAN & PROFILE**

TOWN OF ADDISON, TEXAS

**JUST LICHLITER/JAMESON**

Professional Engineer  
Civil Engineering, Surveying, and Planning  
100 W. Main Street, Suite 500, Dallas, Texas 75201

JOB NO. 67515.001	DATE Nov 8 1995	DRAWN BY C.H.B.	CHECKED BY T.S.B.
CAD FILE KS-P&P1.dgn	CAD DATE Nov 8 1995	SCALE HOR. 1"=20'	SHEET 6 OF 14