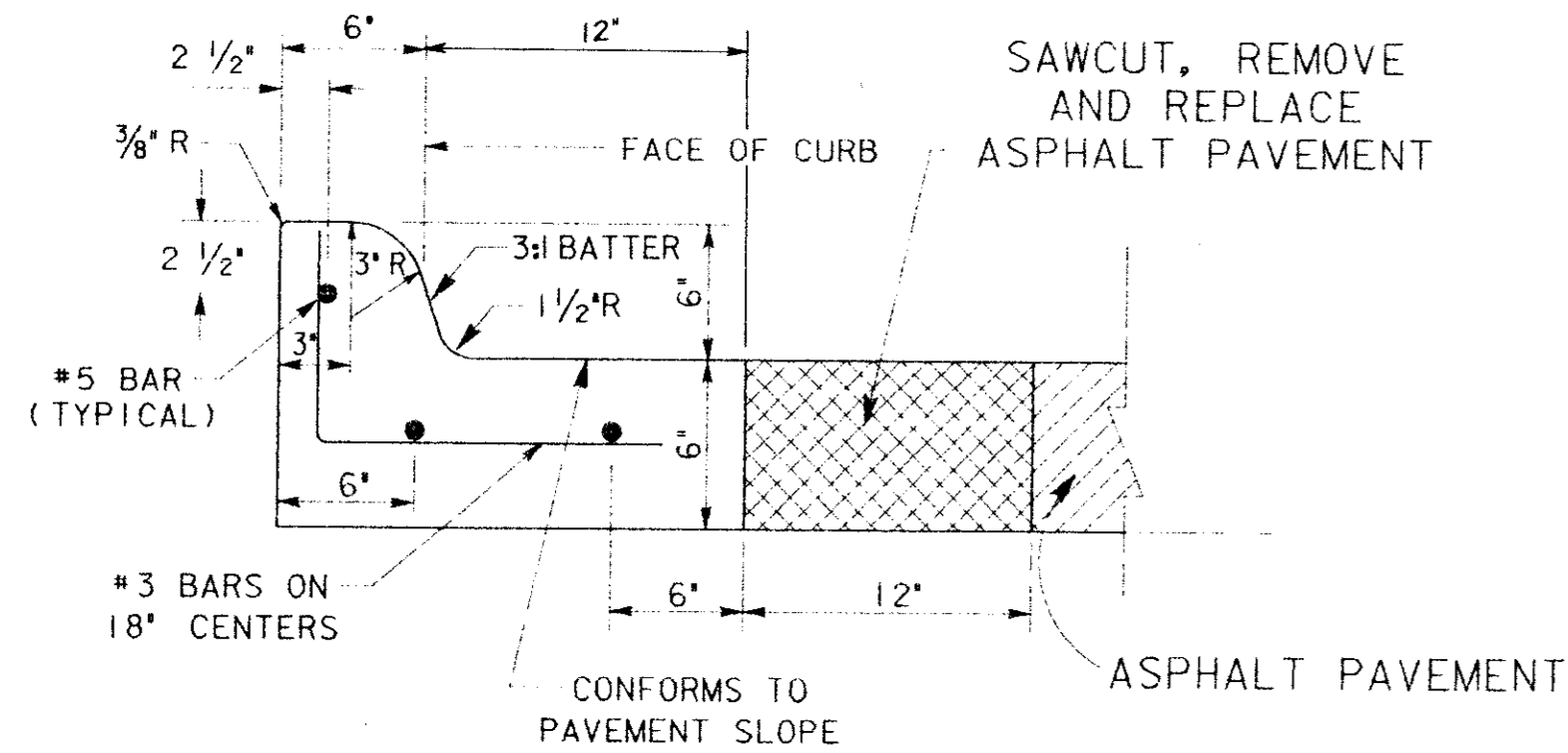


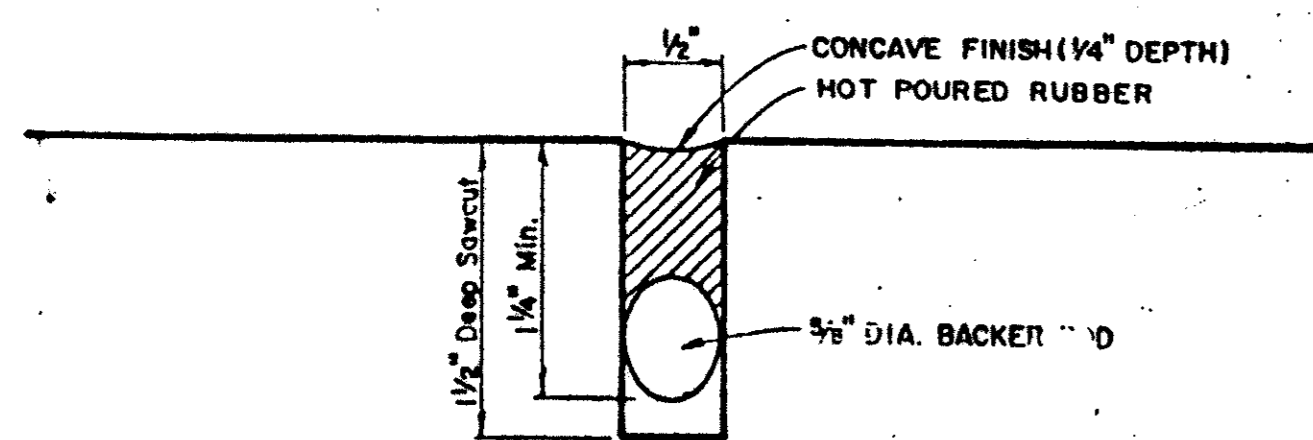
CONCRETE CURB AND GUTTER FOR CURB ADJACENT TO NEW PAVEMENT NOT TO SCALE



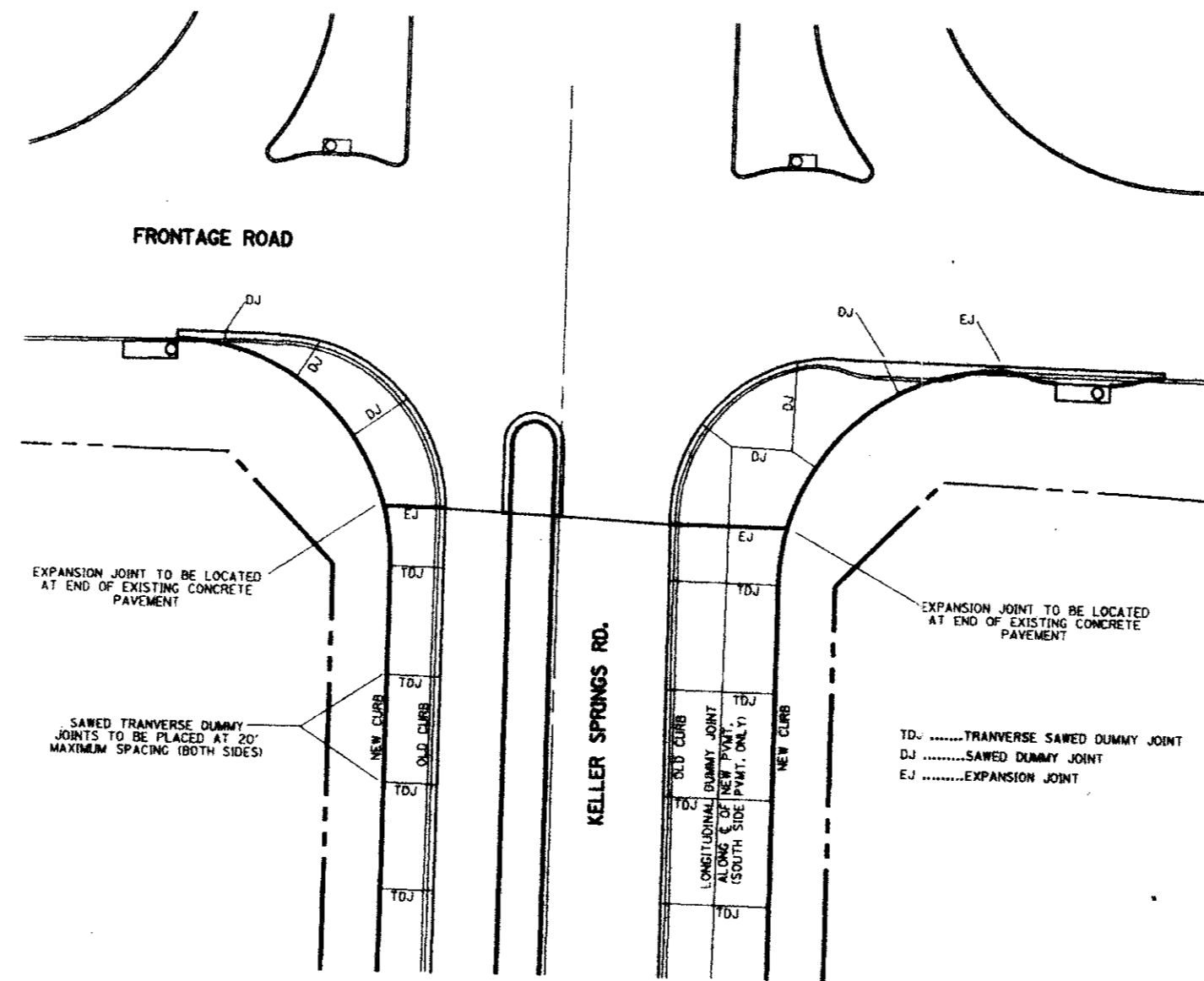
CONCRETE CURB AND GUTTER FOR RAISED MEDIAN NOT TO SCALE

GENERAL NOTES

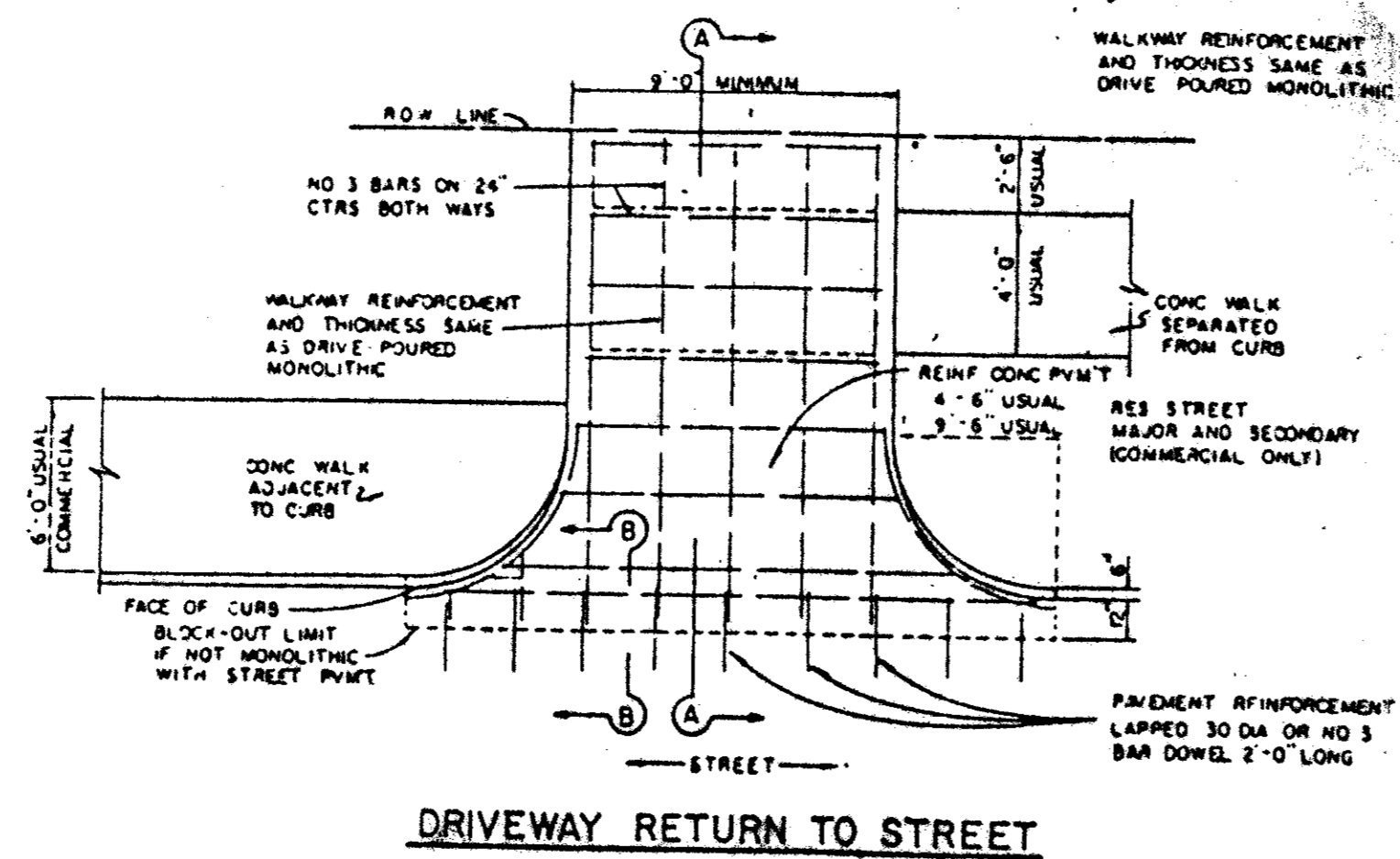
- A. GENERAL PAVEMENT THICKNESS FOR STREETS SHALL BE AS SPECIFIED BELOW IN SPECIAL NOTES.
- B. STANDARD SPECIFICATIONS REINFORCED CONCRETE PAVEMENTS
 1. ALL CURBS SHALL BE PLACED INTEGRAL WITH PAVEMENT
 2. CURBS SHALL MEET THE SAME COMPRESSIVE STRENGTH AS SPECIFIED FOR THE CONCRETE PAVEMENT.
 3. DETAIL AND ARRANGEMENT OF JOINTS, ALL TYPES, SHALL BE AS SHOWN ON THE STANDARD CONSTRUCTION DETAILS, OR AS APPROVED BY ENGINEER.
 4. BAR LAPS SHALL BE 30 DIAMETERS.
- C. BAR CHAIRS OR AN APPROVED SUPPORTING DEVICE SHALL BE FURNISHED.



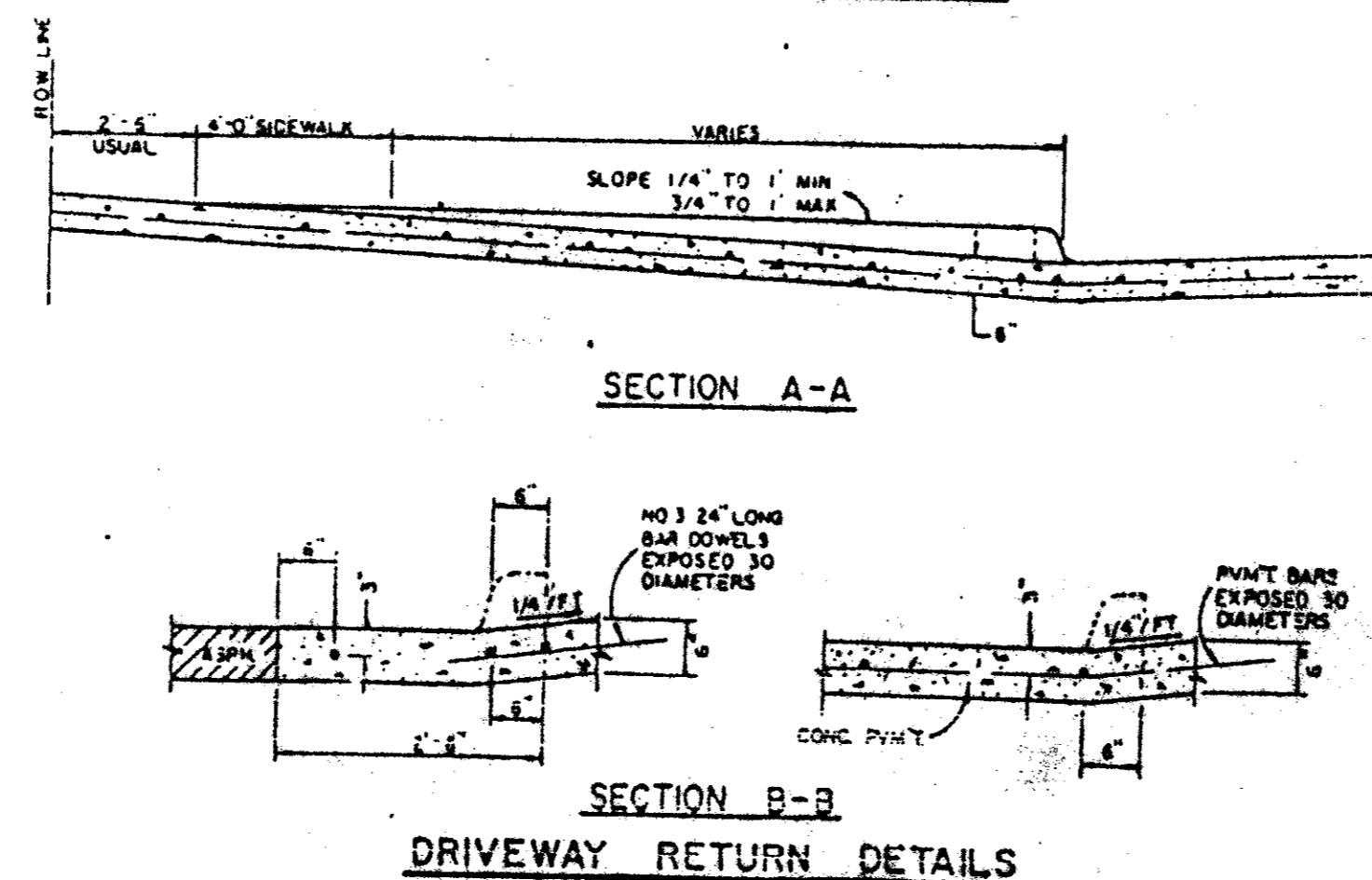
TYPICAL JOINT DETAIL



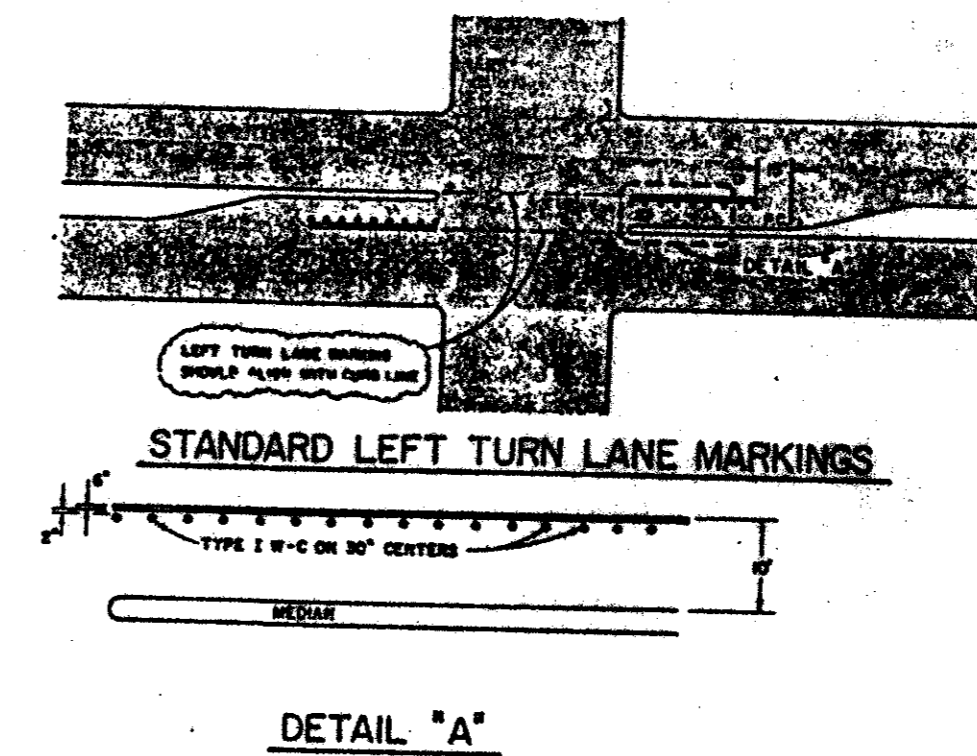
TYPICAL SAWED DUMMY JOINT LOCATION DETAIL N.T.S.



DRIVEWAY RETURN TO STREET

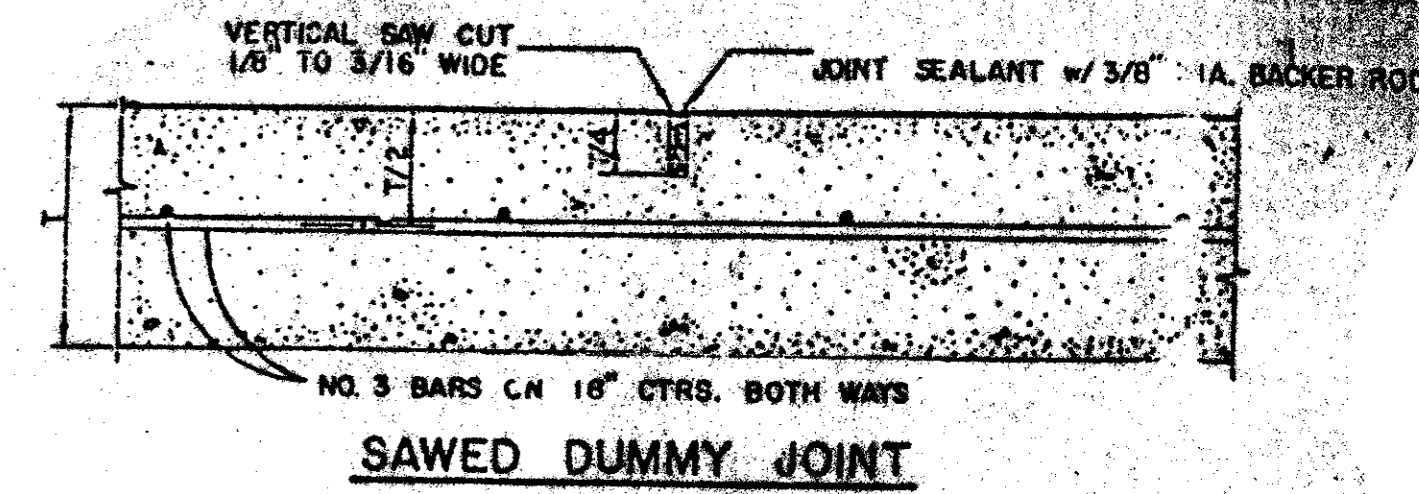


DRIVEWAY RETURN DETAILS

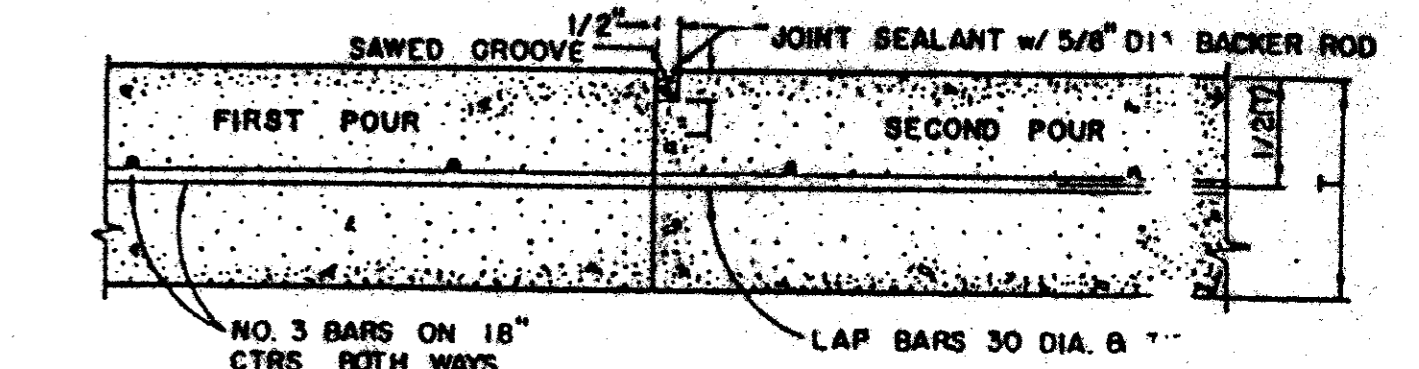


DETAIL "A"

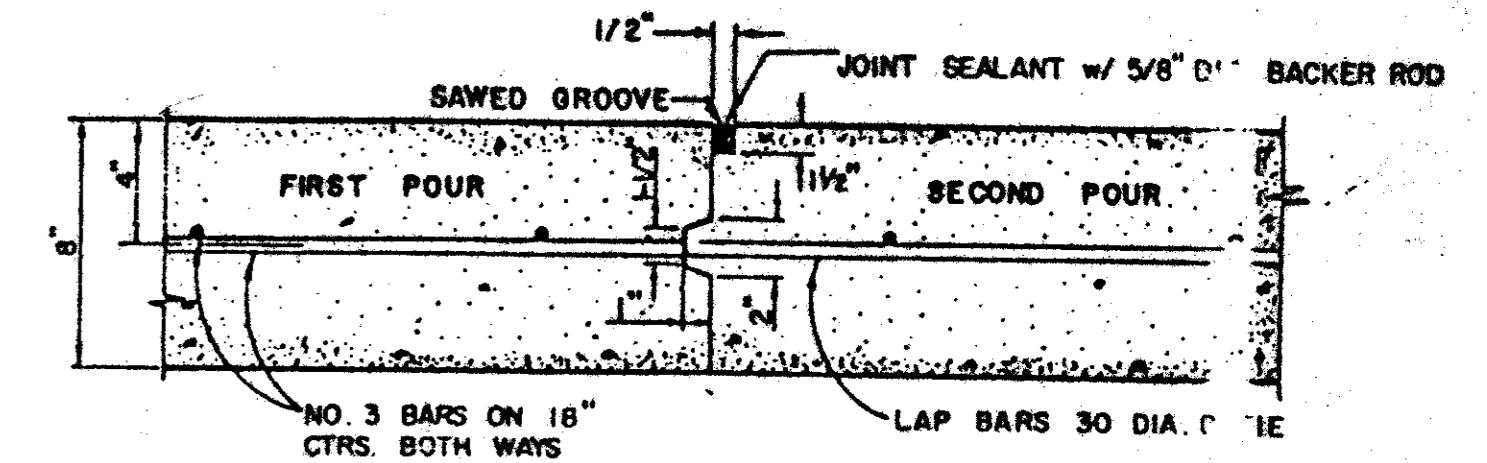
CITY OF DALLAS PAVEMENT MARKING DETAILS



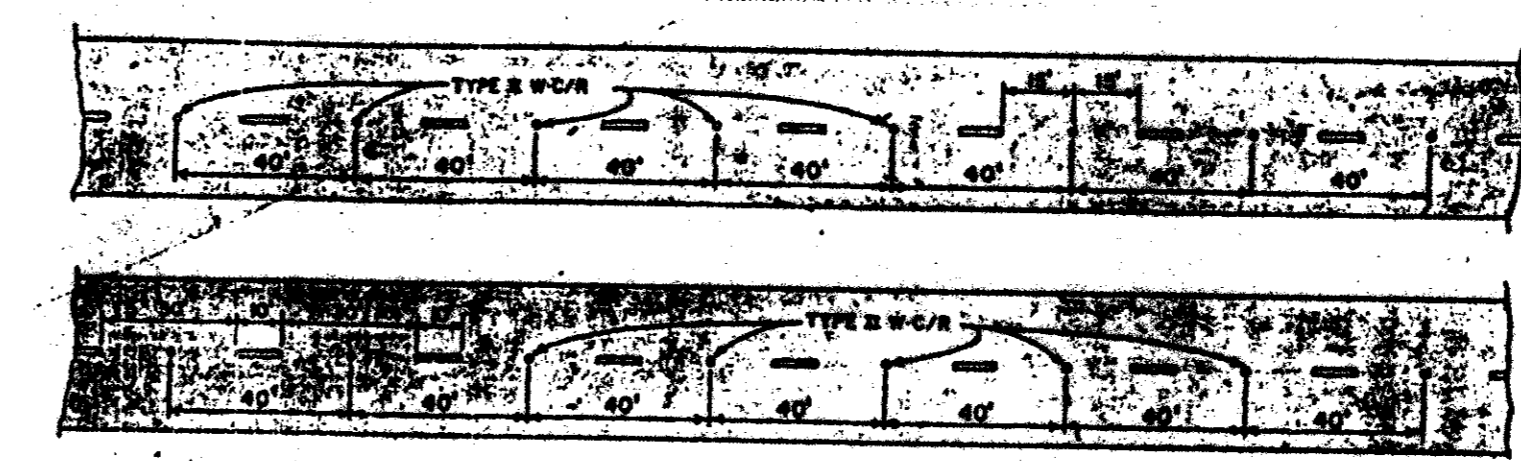
SAWED DUMMY JOINT



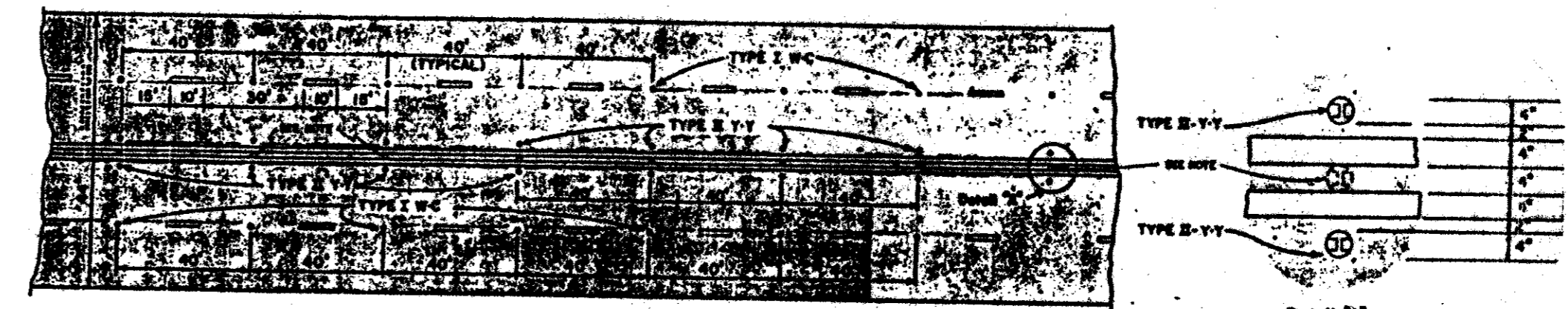
CONSTRUCTION JOINT FOR 6 INCH PAVEMENT



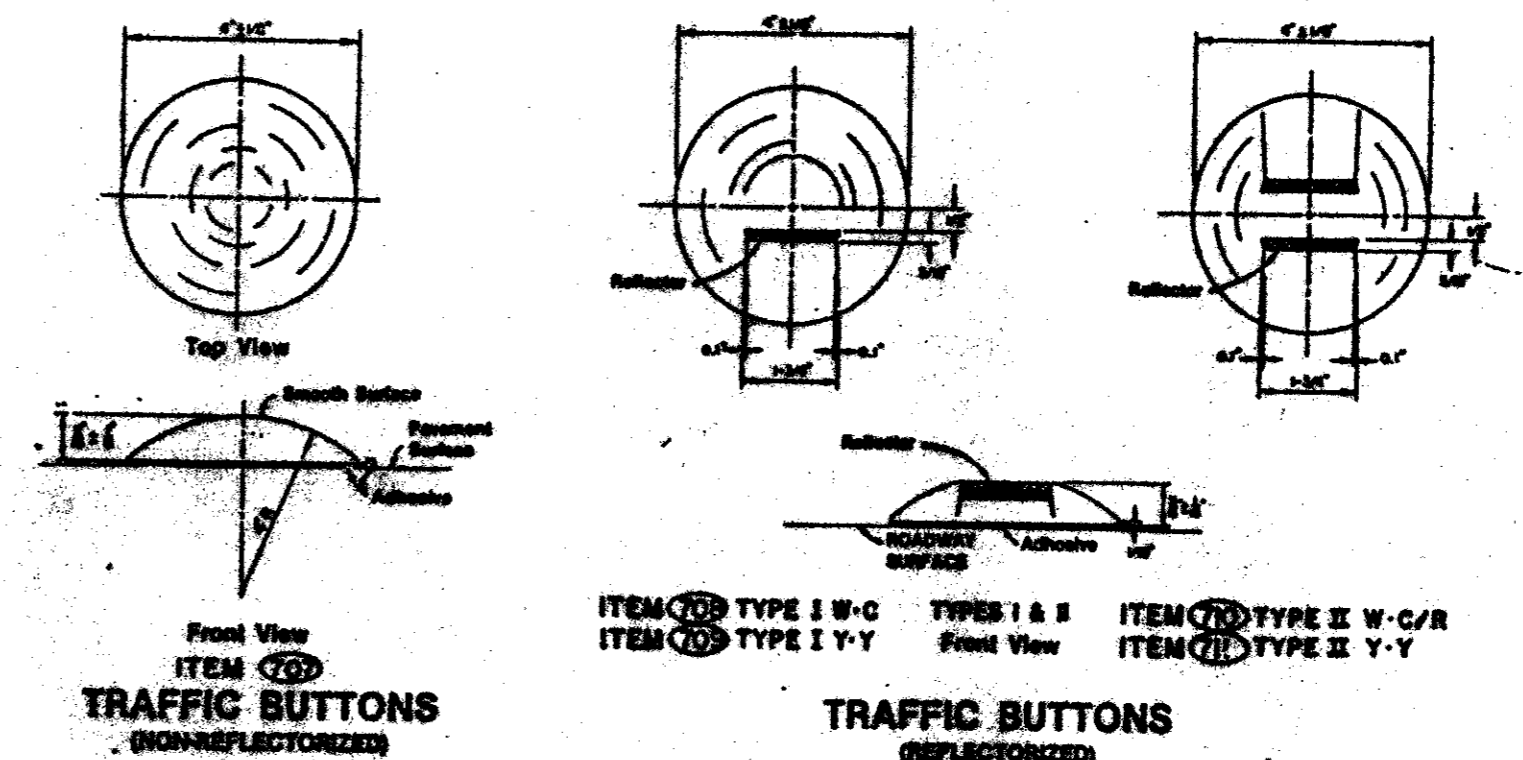
CONSTRUCTION JOINT FOR 8 INCH PAVEMENT



LANE LINES FOR DIVIDED THROUGHFARE

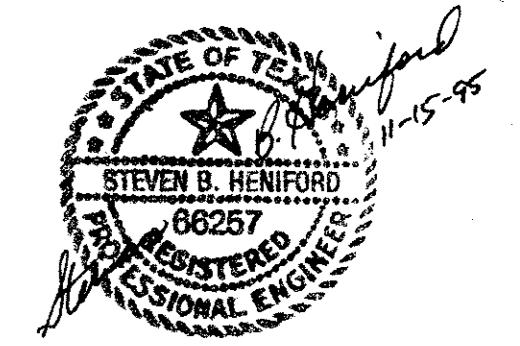


LANE LINES & CENTER LINES FOR UNDIVIDED SECONDARIES (44' or more in width)



TRAFFIC BUTTONS (NON-REFLECTORIZED)

TRAFFIC BUTTONS (REFLECTORIZED)



KELLER SPRINGS ROAD NORTH DALLAS TOLLWAY INTERSECTION IMPROVEMENTS MISCELLANEOUS DETAILS TOWN OF ADDISON, TEXAS

RUST LICHLITER/JAMESON

Professional Engineer
 Consulting Engineers, Scientists and Planners
 100 W. Mockingbird Lane, Suite 303, Dallas, Texas 75207-4995

JOB NO. 67515.00	DATE Nov 8 1995	DRAWN BY C.H.B.	CHECKED BY T.S.B.
CAD FILE KS-MISC.dgn	CAD DATE Nov 8 1995	SCALE	SHEET 9 OF 14