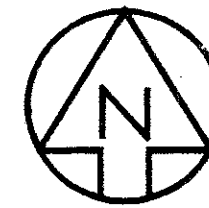


NO.	DATE	DESCRIPTION	BY

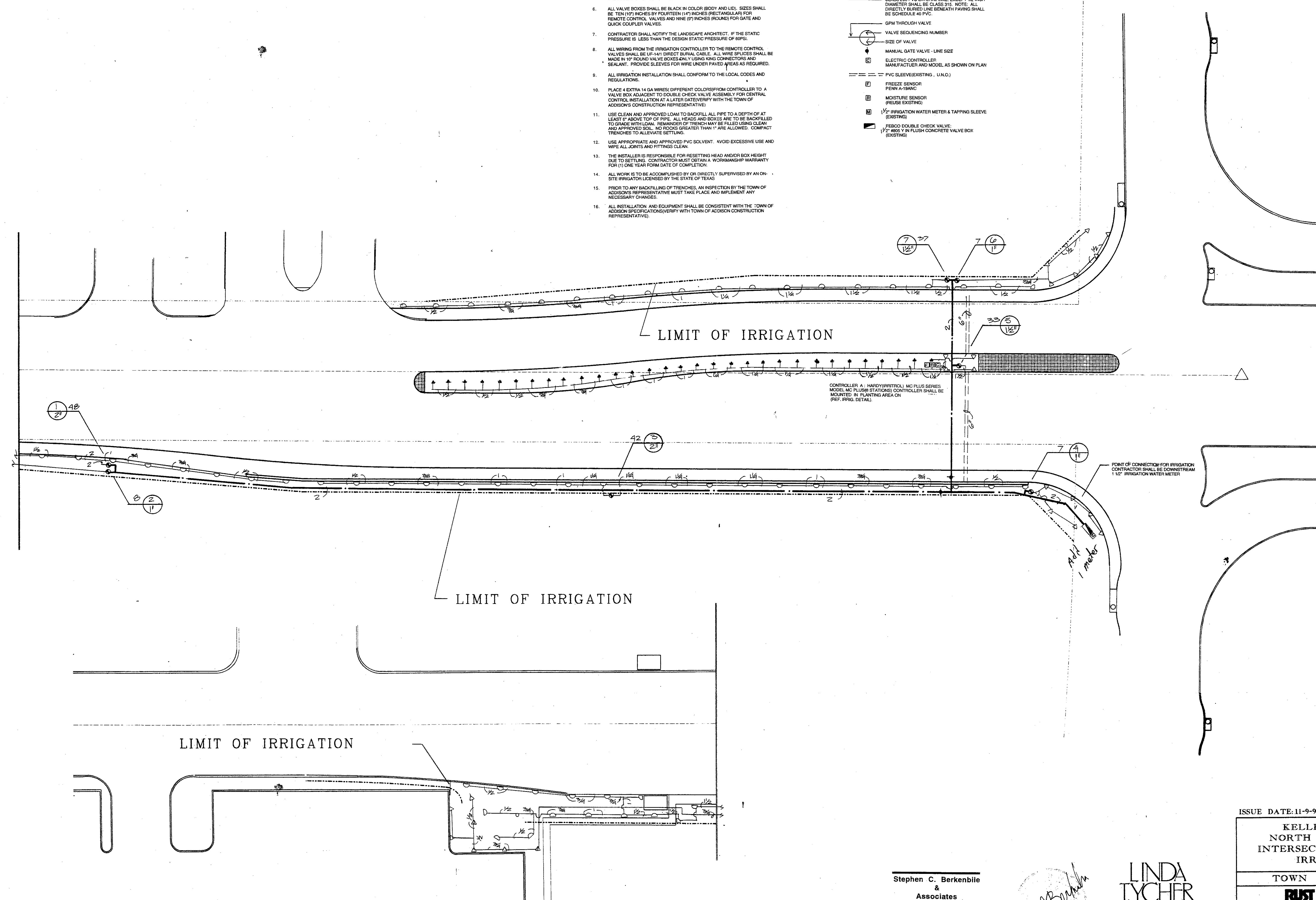


IRRIGATION NOTES

1. LINE LAYOUT IS DIAGRAMMATIC - ADJUST HEAD AND LINE LOCATIONS ON SITE TO ACCOMMODATE EXISTING JOB CONDITIONS AND TO ACHIEVE COMPLETE COVERAGE.
2. ALL MAIN LINE PIPING SHALL BE BURIED TO HAVE A MINIMUM COVER OF 18". ALL LATERAL PIPING DOWNSTREAM OF THE MAIN LINE SHALL BE BURIED TO HAVE A MINIMUM COVER OF 12".
3. ALL MAINS ARE TO DRAIN TO LOW POINTS AT A MINIMUM ONE HALF (1/2%) PERCENT SLOPE. AT LOW POINTS, INSTALL GATE VALVE TO FACILITATE DRAINAGE OF SYSTEM DURING FREEZING TEMPERATURES.
4. CONTRACTOR SHALL MAKE MINOR ADJUSTMENTS TO SYSTEM LAYOUT IN THE FIELD TO INSURE POSITIVE DRAINAGE OF MAINS AND LATERALS.
5. CONTRACTOR SHALL INSTALL AUTOMATIC DRAIN VALVES AT LOW POINTS IN THE IRRIGATION LINES AS REQUIRED TO PREVENT FREEZE DAMAGE.
6. ALL VALVE BOXES SHALL BE BLACK IN COLOR (BODY AND LID). SIZES SHALL BE TEN (10) INCHES BY FIFTEEN (15) INCHES (RECTANGULAR) FOR REMOTE CONTROL VALVES AND NINE (9) INCHES (ROUND) FOR GATE AND QUICK COUPLER VALVES.
7. CONTRACTOR SHALL NOTIFY THE LANDSCAPE ARCHITECT, IF THE STATIC PRESSURE IS LESS THAN THE DESIGN STATIC PRESSURE OF 80PSI.
8. ALL WIRING FROM THE IRRIGATION CONTROLLER TO THE REMOTE CONTROL VALVES SHALL BE #14 DIRECT BURIAL CABLE. ALL WIRE SPLICES SHALL BE MADE IN 1" ROUND VALVE BOXES AND Y USING KING CONNECTORS AND SEALANT. PROVIDE SLEEVES FOR WIRE UNDER PAVED AREAS AS REQUIRED.
9. ALL IRRIGATION INSTALLATION SHALL CONFORM TO THE LOCAL CODES AND REGULATIONS.
10. PLACE 4 EXTRA 14 GA WIRES (DIFFERENT COLORS) FROM CONTROLLER TO A VALVE BOX ADJACENT TO DOUBLE CHECK VALVE ASSEMBLY FOR CENTRAL CONTROL INSTALLATION AT A LATER DATE (VERIFY WITH THE TOWN OF ADDISON'S CONSTRUCTION REPRESENTATIVE).
11. USE CLEAN AND APPROVED LOAM TO BACKFILL ALL PIPE TO A DEPTH OF AT LEAST 6" ABOVE TOP OF PIPE. ALL HEADS AND BOXES ARE TO BE BACKFILLED TO GRADE WITH LOAM. REMAINDER OF TRENCH MAY BE FILLED USING CLEAN AND APPROVED SOIL. NO ROCKS GREATER THAN 1" ARE ALLOWED. COMPACT TRENCHES TO ALEVATE SETTLING.
12. USE APPROPRIATE AND APPROVED PVC SOLVENT. AVOID EXCESSIVE USE AND WIPE ALL JOINTS AND FITTINGS CLEAN.
13. THE INSTALLER IS RESPONSIBLE FOR RESETTING HEAD AND/OR BOX HEIGHT DUE TO SETTLING. CONTRACTOR MUST OBTAIN A WORKMANSHIP WARRANTY FOR (1) ONE YEAR FROM DATE OF COMPLETION.
14. ALL WORK IS TO BE ACCOMPLISHED BY OR DIRECTLY SUPERVISED BY AN ON-SITE IRRIGATOR LICENSED BY THE STATE OF TEXAS.
15. PRIOR TO ANY BACKFILLING OF TRENCHES, AN INSPECTION BY THE TOWN OF ADDISON'S REPRESENTATIVE MUST TAKE PLACE AND IMPLEMENT ANY NECESSARY CHANGES.
16. ALL INSTALLATION AND EQUIPMENT SHALL BE CONSISTENT WITH THE TOWN OF ADDISON SPECIFICATIONS (VERIFY WITH TOWN OF ADDISON CONSTRUCTION REPRESENTATIVE).

IRRIGATION LEGEND

- ▲ TOROMAR DIE POP-UP SHRUB SPRAY HARDIE HSN-7 1/2" FULL NOZZLE ON A TORO #4P SI BODY (1.86 GPM)
- △ TORO POP-UP SHRUB SPRAY 570Z SERIES MP1 1/2" FULL, HALF, & QUARTER NOZZLE ON A #12P SI BODY (2.19, 1.09, .5 GPM)
- ▽ TORO SHRUB SPRAY 570Z SERIES MP1 1/2" FULL, HALF, & QUARTER NOZZLE ON A 1/2" COPPER RISER WITH 570 SHRUB ADAPTER (2.19, 1.09, .5 GPM)
- ⊕ WEATHERMATIC WITH FLOW CONTROL 6000 SERIES ELECTRIC REMOTE CONTROL VALVE
- SCHEDULE 40 PVC MAINLINE
- CLASS 200 PVC LATERAL LINE, EXCEPT 1/2 INCH DIAMETER SHALL BE CLASS 315. NOTE: ALL DIRECTLY BURIED LINE BENEATH PAVING SHALL BE SCHEDULE 40 PVC
- ⊖ GPM THROUGH VALVE
- ⊙ VALVE SEQUENCING NUMBER
- ⊘ SIZE OF VALVE
- ⊚ MANUAL GATE VALVE - LINE SIZE
- ⊛ ELECTRIC CONTROLLER (MANUFACTURER AND MODEL AS SHOWN ON PLAN)
- PVC SLEEVE (EXISTING - U.N.C.)
- ⊠ FREEZE SENSOR PENN A-15ANC
- ⊡ MOISTURE SENSOR (REUSE EXISTING)
- ⊣ IRRIGATION WATER METER & TAPPING SLEEVE (EXISTING)
- ⊤ FERCO DOUBLE CHECK VALVE 1/2" 8005 Y IN FLUSH CONCRETE VALVE BOX (EXISTING)



Stephen C. Berkenbile
 & Associates
 Irrigation Design Consultants
 411 Hyde Park Place
 Duncanville, Texas 75117
 (214) 296-2724 Fax (214) 296-2724

Stephen C. Berkenbile

LINDA TYCHER
 & ASSOCIATES
 LANDSCAPE ARCHITECTS
 11411 N. CENTRAL EXPRESSWAY SUITE "V"
 DALLAS, TEXAS 75243
 PH: 214-750-1210 FAX: 214-381-8727

ISSUE DATE: 11-9-95

KELLER SPRINGS ROAD
 NORTH DALLAS TOLLWAY
 INTERSECTION IMPROVEMENTS
 IRRIGATION PLAN

TOWN OF ADDISON, TEXAS

JUST LICHLITER/JAMESON
 Environment & Infrastructure
 Consulting Engineers, Scientists and Planners
 1420 W. Mockingbird Lane, Suite 300, Dallas, Texas 75247-4906

JOB NO. 67515-001	DATE	DRAWN BY	CHECKED BY
CAD FILE	CAD DATE	SCALE	SHEET

KELLER SPRINGS @ DALLAS PARKWAY IRRIGATION 11/95