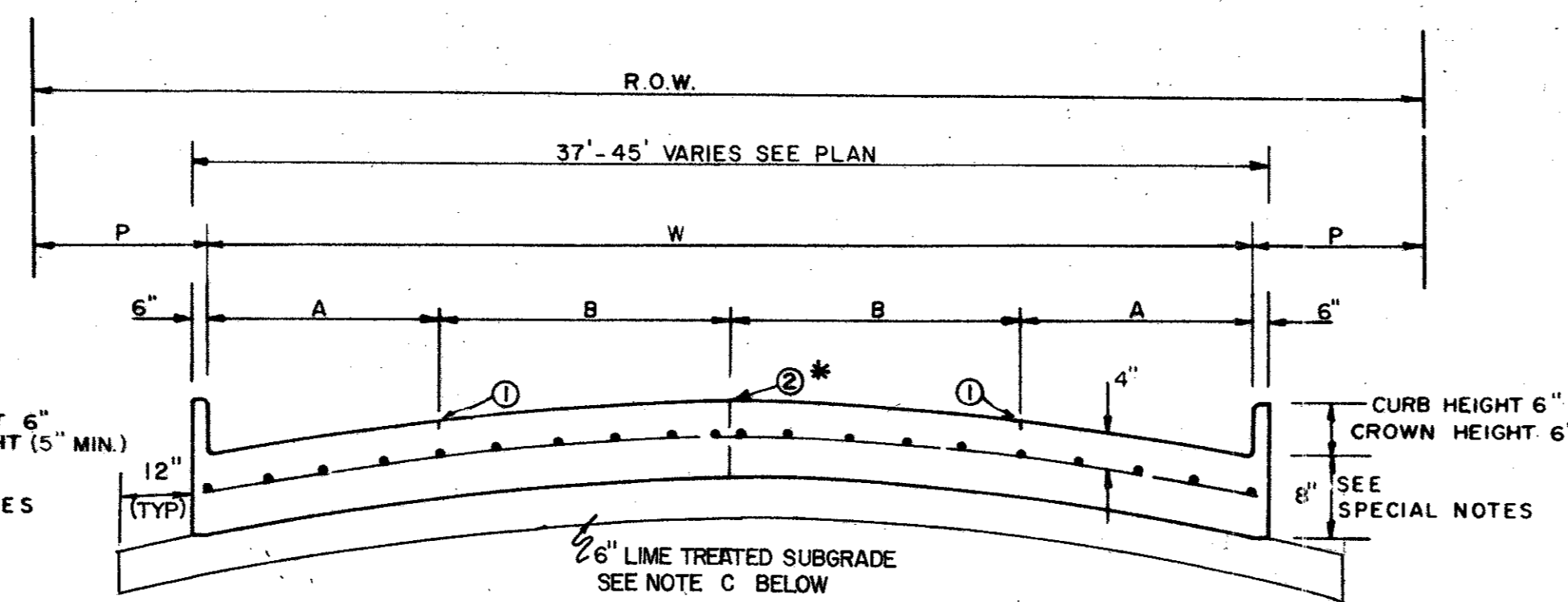
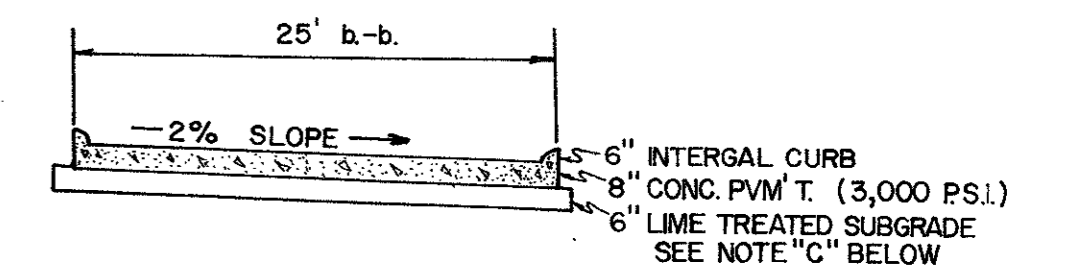


ONE MOVING LANE / TWO PARKING LANES
(LOCAL STREET)



STREET TYPE	STREET WIDTH (W)	A	B	R.O.W. WIDTH	P
COLLECTOR /	36' #	8'	10'	60'	11.5'
COLLECTOR /	40'	8' OR 10'	10' OR 12'	60'	9.5'
COLLECTOR /	44'	11'	11'	65'	10.0'

* FULL WIDTH PAVEMENT OF 36' WIDTH STREETS IS ALLOWED WHERE APPROVED BY THE TOWN OF ADDISON



TYPICAL SECTION
DOOLEY ROAD
STA. 0+20.8 TO MIDWAY RD.

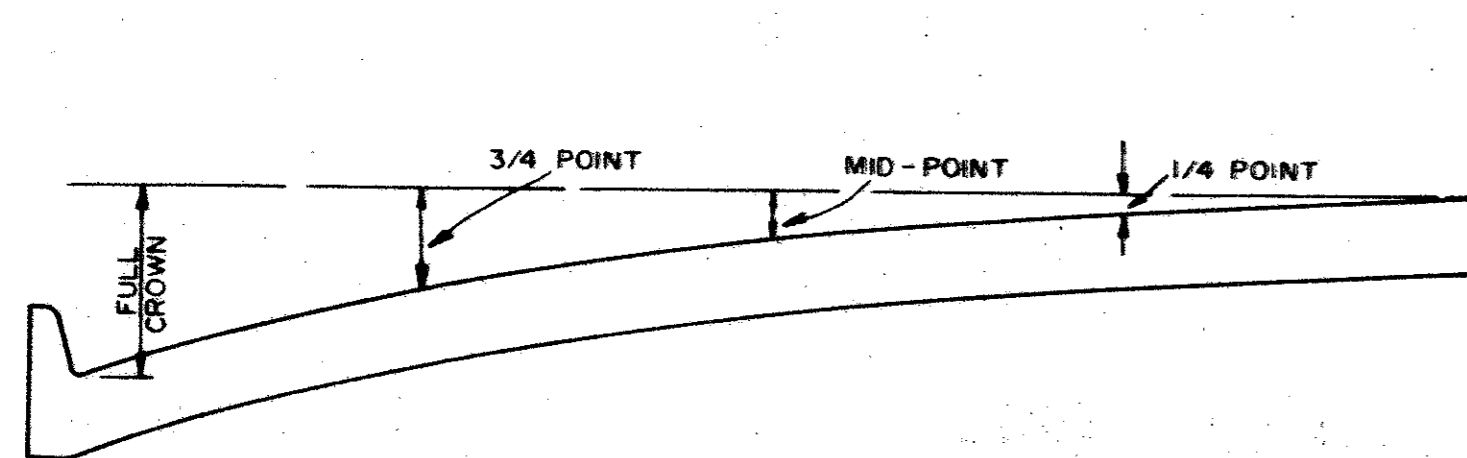
FOR DOOLEY RD. STA. 12+00-15+00
SEE PLAN SHEET NO. 6
FOR KELLER SPRINGS STA. 0+37.54-4+00
SEE PLAN SHEET NO. 7

FOUR MOVING LANES OR TWO MOVING LANES / TWO PARKING LANES

REINFORCED CONCRETE PAVEMENT

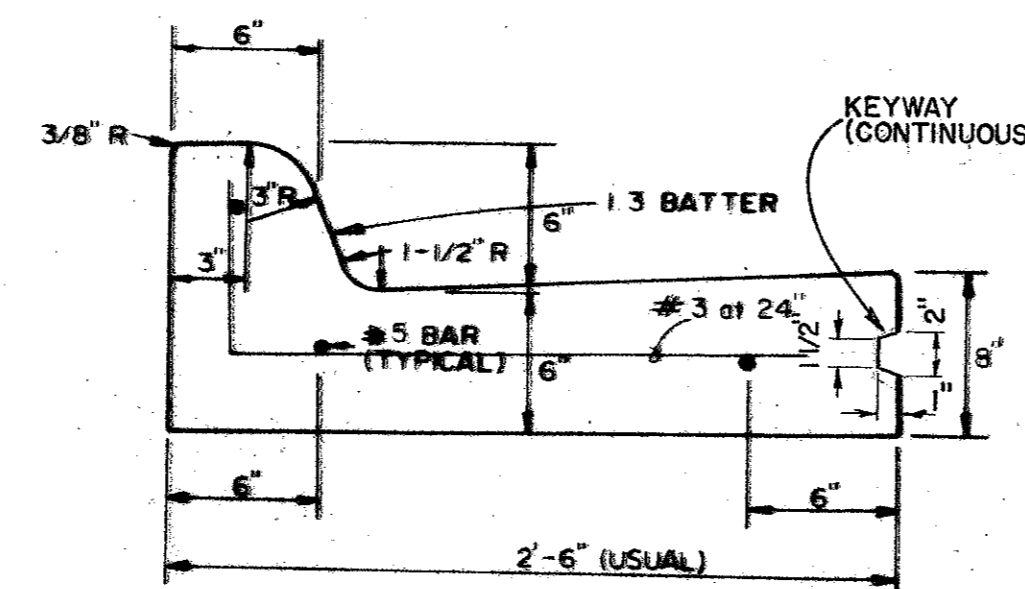
ALL REINFORCING BARS SHALL BE NO. 3 TRANSVERSE BARS TO BE SPACED ON 2'-0" CENTERS, LONGITUDINAL BARS TO BE SPACED ON 2'-0" EXCEPT WHERE NOTED

- ① SAWED LONGITUDINAL DUMMY JOINT
- ② CONSTRUCTION JOINT (FULL WIDTH P.V.M.T. IS ALLOWED WHERE APPROVED BY ENGINEER)

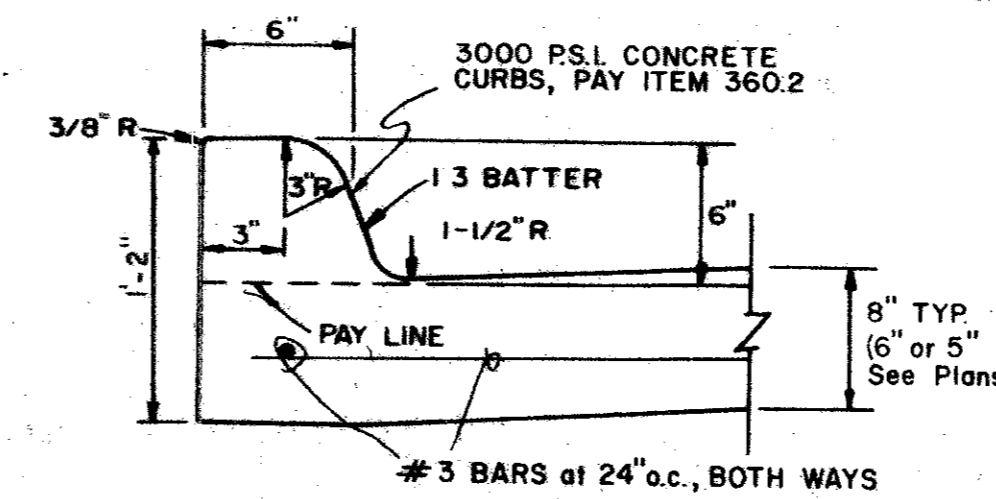


ROADWAY WIDTH (W)	TOTAL CROWN HEIGHT	3/4 POINT	MID-POINT	1/4 POINT
26'	6"	3-3/8"	1-1/2"	3/8"
36'	6"	3-3/8"	1-1/2"	3/8"
44'	6"	3-3/8"	1-1/2"	3/8"
48'	6"	3-3/8"	1-1/2"	3/8"

TABLE OF CROWN HEIGHTS AND ORDINATES FOR VARIOUS PARABOLIC SECTIONS



SEPARATE CURB-AND-GUTTER
PAY ITEM 360.3



INTEGRAL CURB
PAY ITEM 360.2

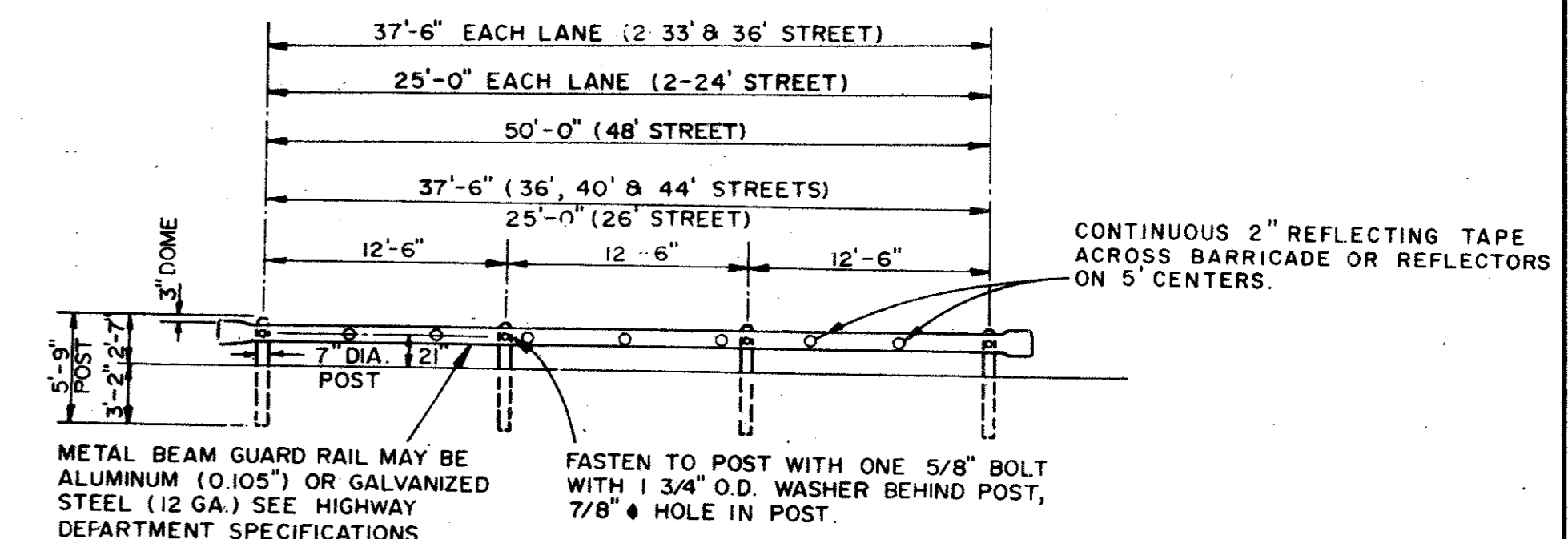
CURB AND CURB-AND-GUTTER

GENERAL NOTES

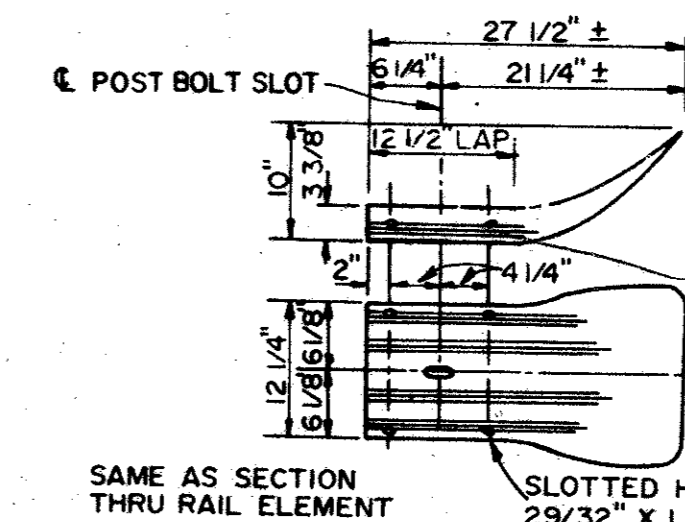
- A. GENERAL
USUAL PAVEMENT THICKNESS IS AS SHOWN IN SPECIAL NOTES. SUBGRADE DESIGN SHALL CONFORM TO THE TOWN OF ADDISON, DEPARTMENT OF ENGINEERING REQUIREMENTS, AND SHALL EXTEND 12" (MIN.) BEHIND CURB.
- B. REINFORCED CONCRETE PAVEMENT
 - 1. CONCRETE STRENGTH SHALL BE AS SHOWN IN SPECIAL NOTES.
 - 2. ALL CURBS SHALL BE INTEGRAL WITH PAVEMENT.
 - 3. DETAIL AND ARRANGEMENT OF PAVEMENT JOINTS, ALL TYPES, SHALL BE AS SHOWN ON SHEET SD-3.
 - 4. BAR LAPS SHALL BE THIRTY DIAMETERS.
- C. SUBGRADE
SUBGRADE UNDER ALL PAVEMENT SHALL BE 6 INCHES THICK AND SHALL BE STABILIZED WITH 6 PERCENT BY WEIGHT OF HYDRATED LIME (27 LBS./SY.) AND COMPACTED TO A DENSITY NOT LESS THAN 95 PERCENT AS DETERMINED BY A.A.S.H.O. T-99. LABORATORY TESTS MAY BE SUBMITTED TO THE ENGINEERING DEPARTMENT FOR APPROVAL TO LOWER AMOUNT OF LIME REQUIRED.
- D. BAR CHAIRS OR AN APPROVED DEVICE SHALL BE FURNISHED.

SPECIAL NOTES

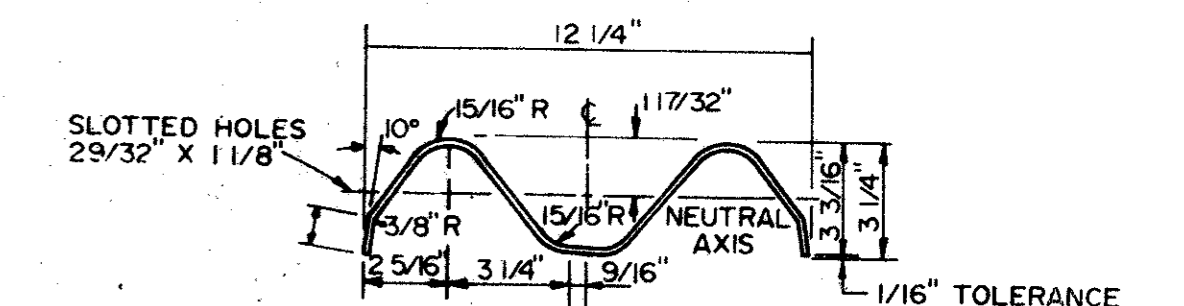
PAVEMENT THICKNESS AND STRENGTHS SHALL BE AS FOLLOWS;
TYPE (RETAIL THRU INDUSTRIAL)
8" - 3000 P.S.I.



FRONT ELEVATION



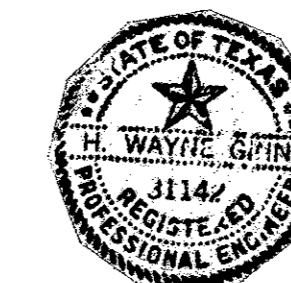
TERMINAL SECTION



NOTE: ACTUAL SECTION MAY BE SLIGHTLY DIFFERENT DEPENDING UPON THE MFR.

SECTION THRU RAIL ELEMENT

BARRICADE DETAIL
PAY ITEM 540.1



NO.	REVISION	BY	DATE
TOWN OF ADDISON, TEXAS DEPARTMENT OF ENGINEERING			
STANDARD CONSTRUCTION DETAILS PAVING			
PARABOLIC CROWN STREETS			
APPROVED		H. WAYNE GINN, P.E.	
DATE MARCH, 1984		SHEET	SD-2