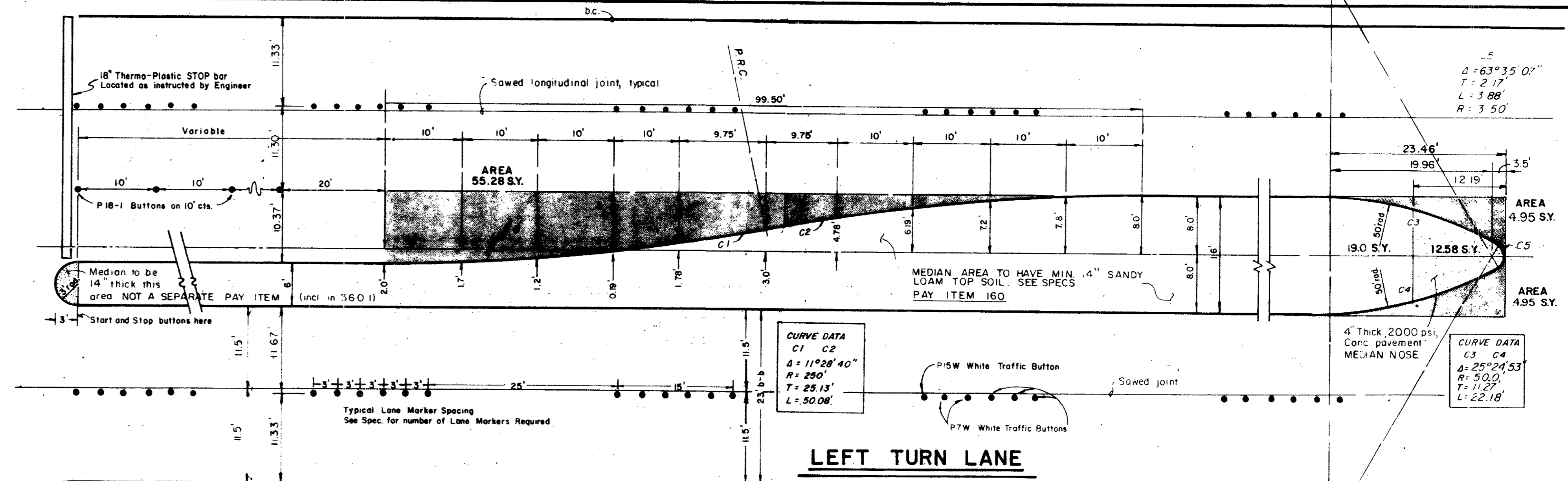
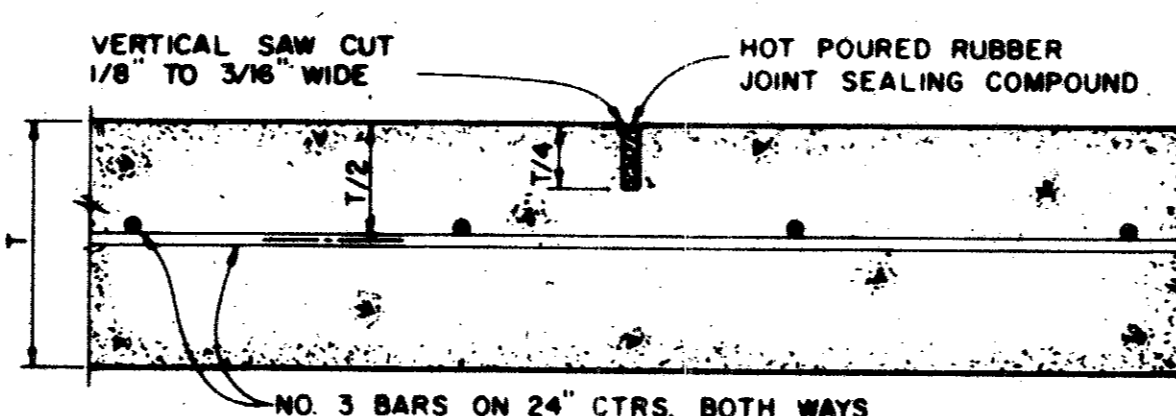


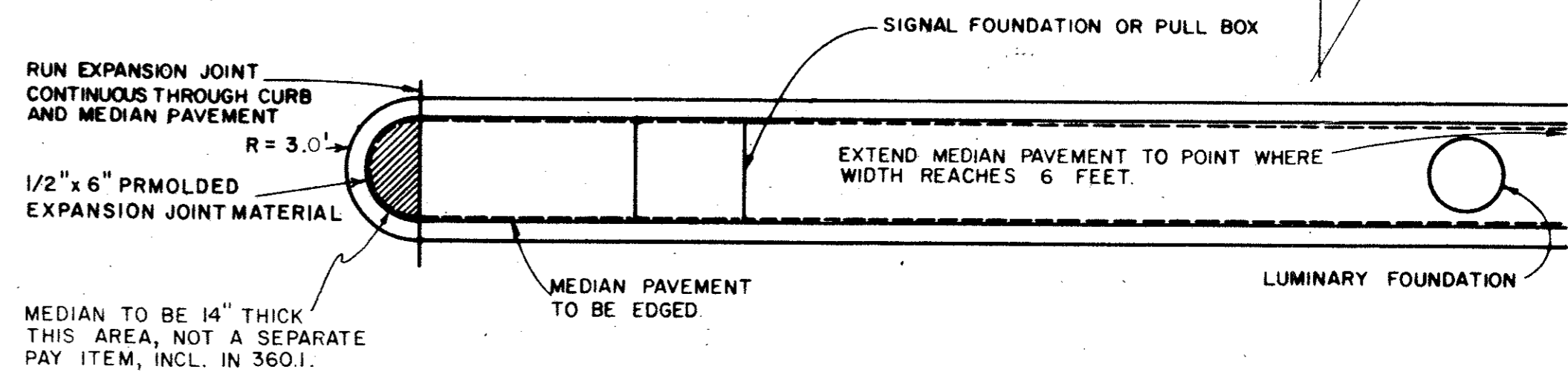
SPACING DIAGRAM FOR TRANSVERSE JOINTS



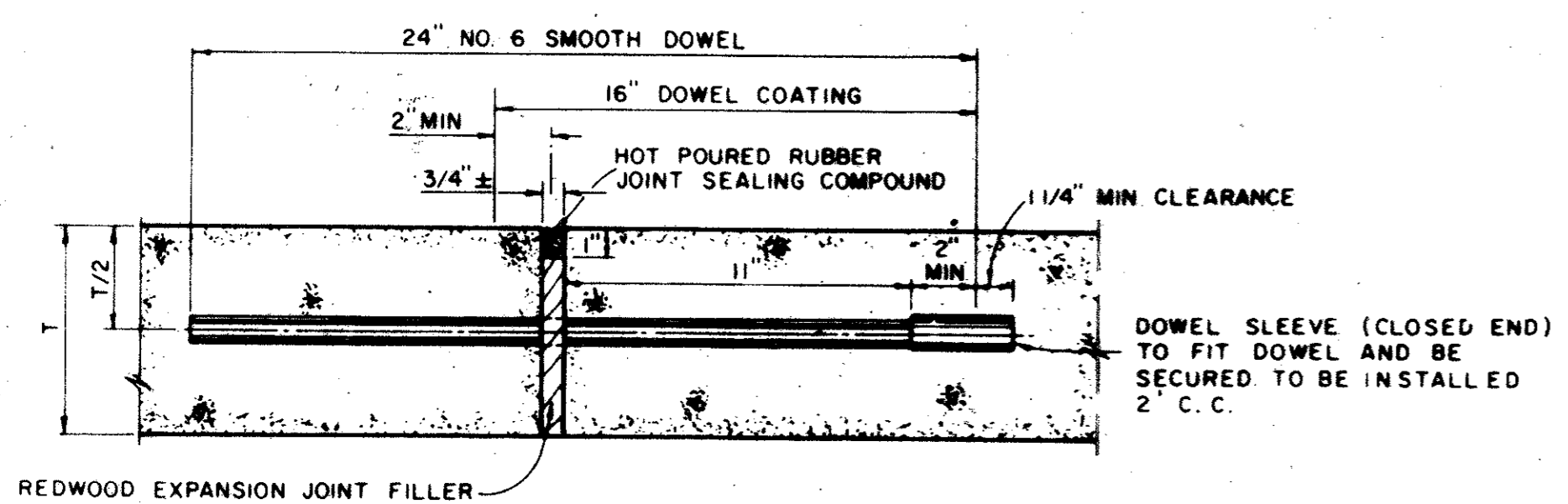
LEFT TURN LANE



SAWED DUMMY JOINT

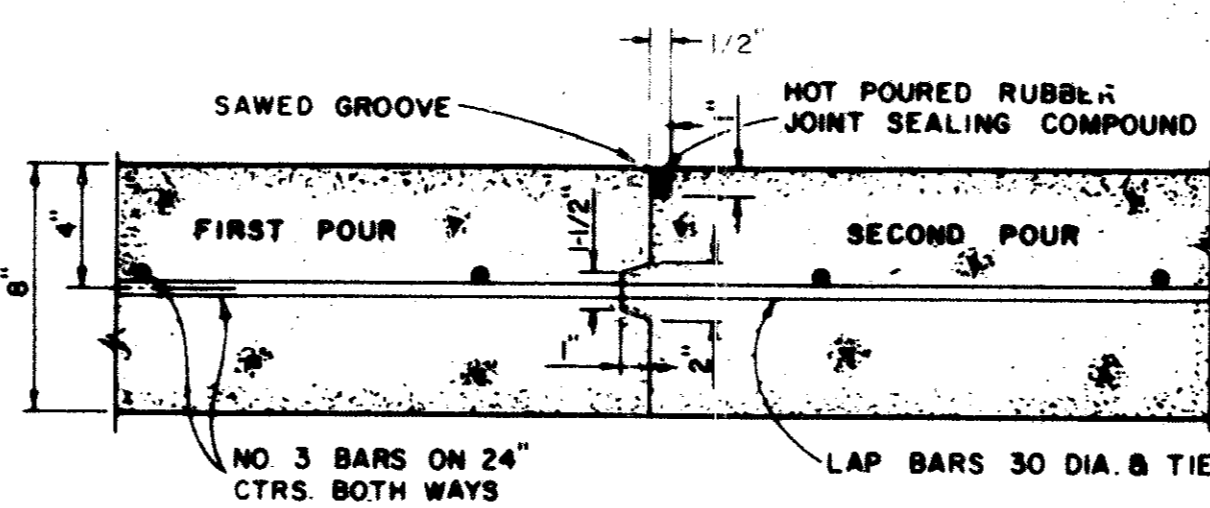


DETAIL OF 6' MEDIAN PAVEMENT

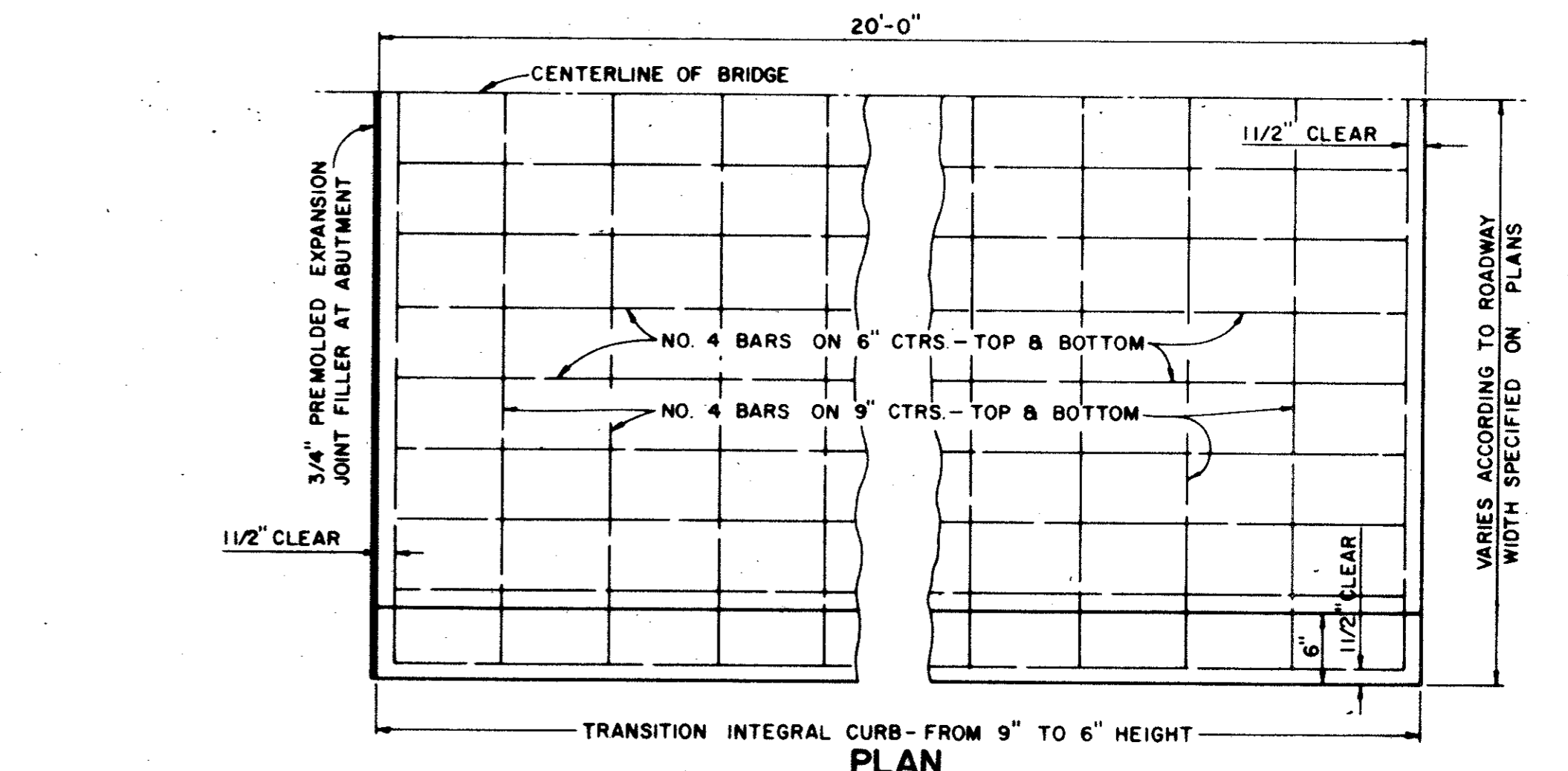


TRANSVERSE EXPANSION JOINT

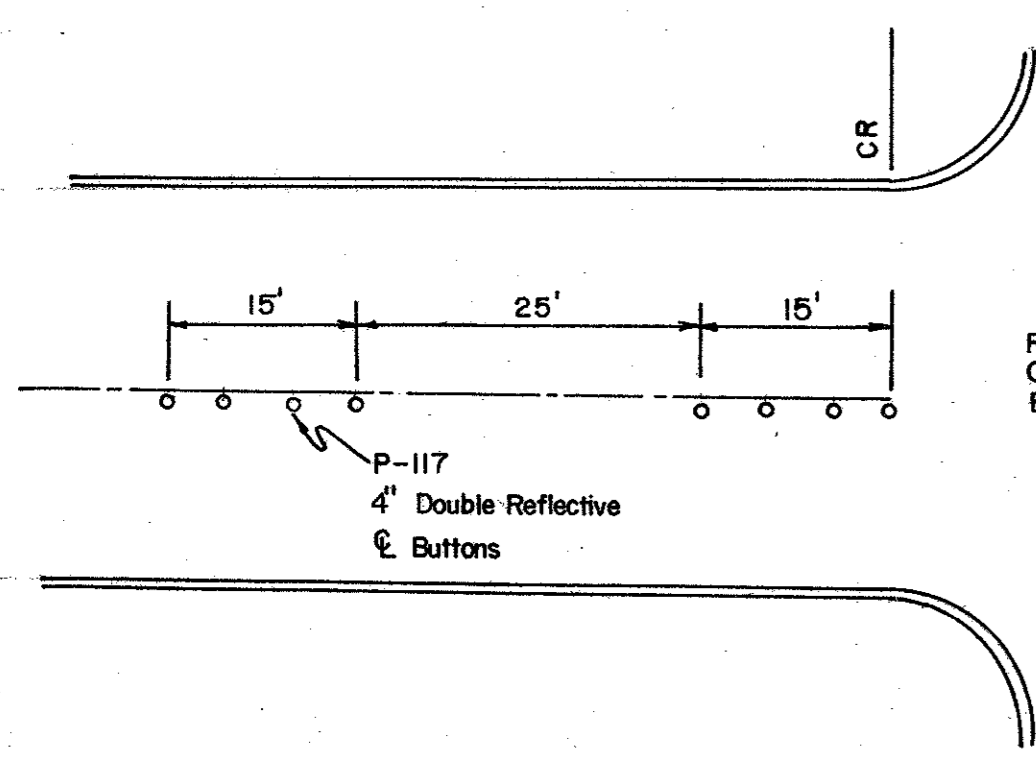
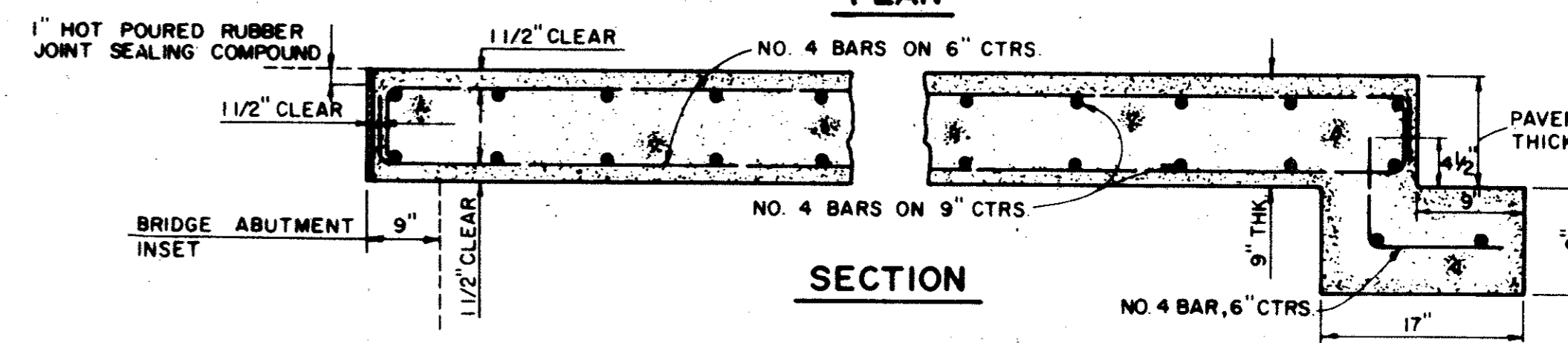
(SPACED 600 FT. MAXIMUM; LOCATE AT INTERSECTIONS)



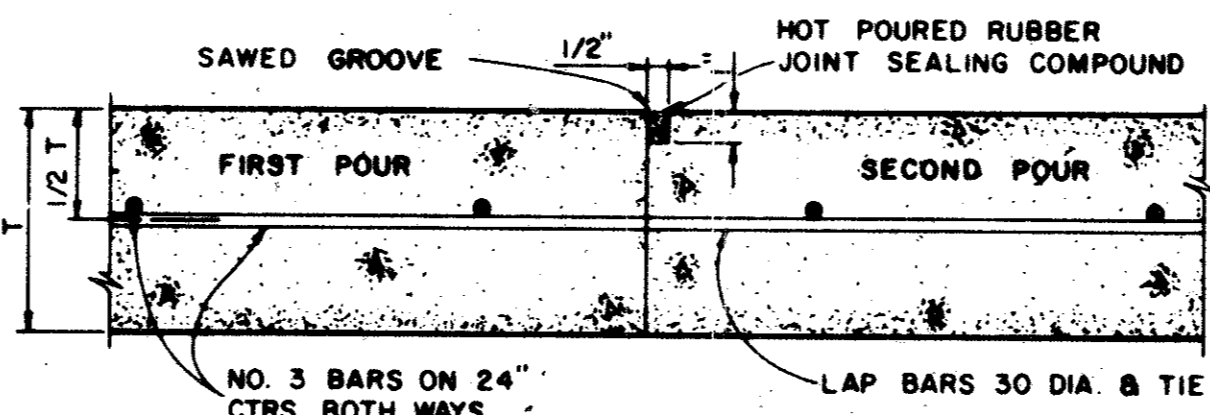
CONSTRUCTION JOINT FOR 8\"/>



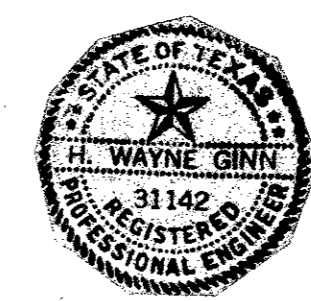
BRIDGE APPROACH SLAB



STANDARD BUTTON LAYOUT



CONSTRUCTION JOINT FOR 5\"/>



| NO. | REVISION | BY | DATE |
|---|----------|---------------------|------|
| TOWN OF ADDISON, TEXAS DEPARTMENT OF ENGINEERING | | | |
| STANDARD CONSTRUCTION DETAILS PAVING | | | |
| PAVEMENT JOINTS | | | |
| APPROVED | | H. WAYNE GINN, P.E. | |
| DATE MARCH, 1984 | | SHEET SD-3 | |