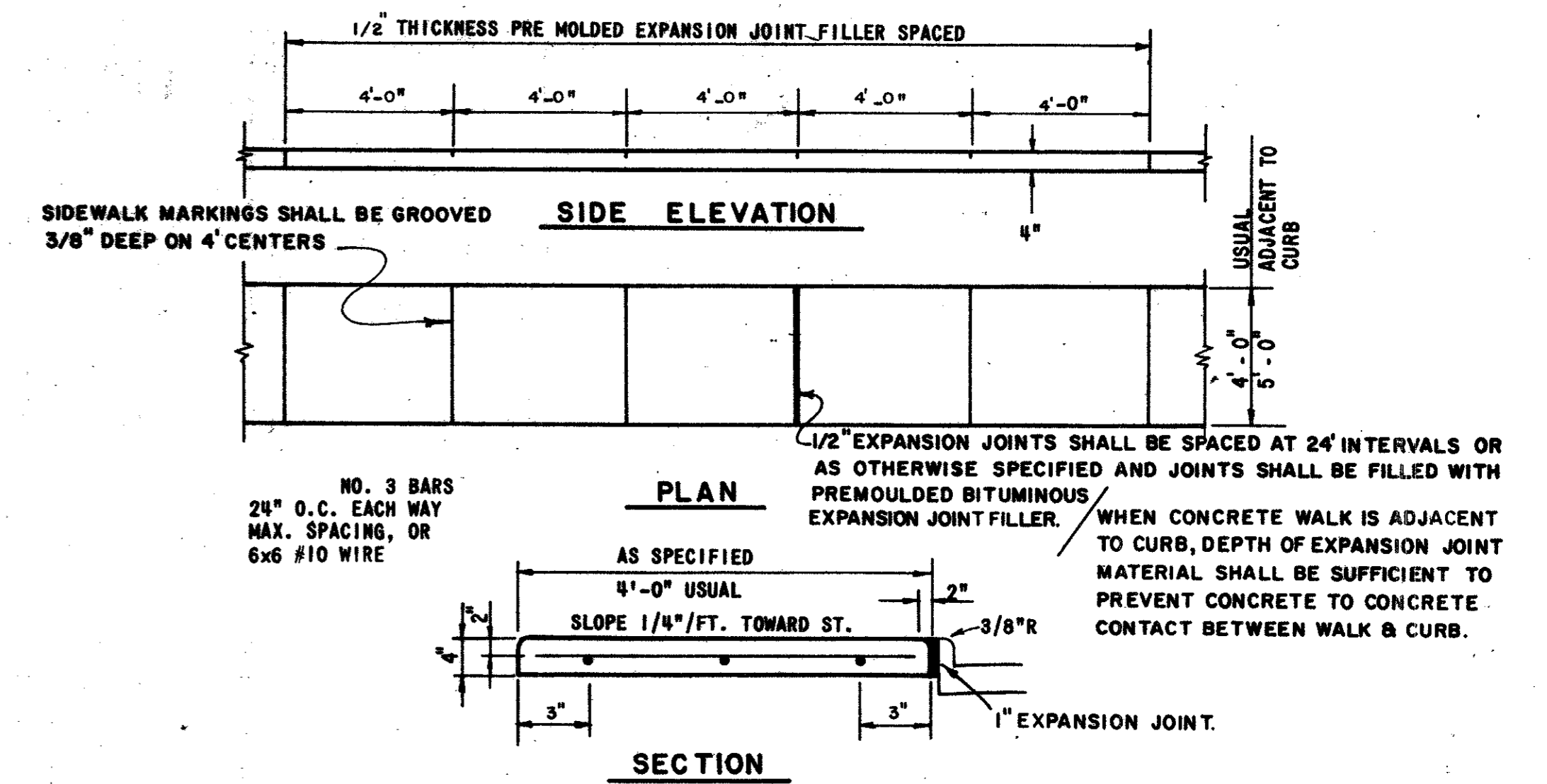
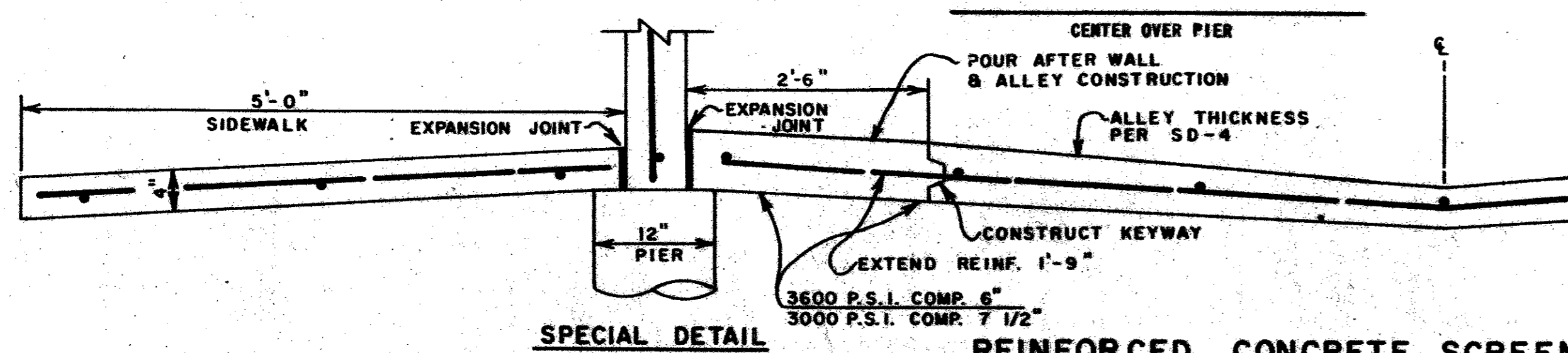


**NOTE:**

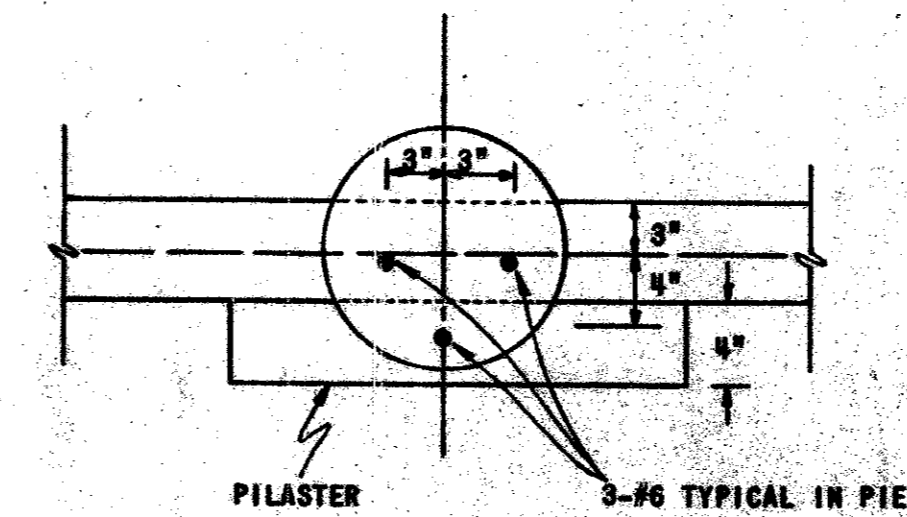
PIERS REQUIRE  
(1) BLOCK-OUT OF ALLEY PAVING  
(2) POUR BEFORE ALLEY PAVING  
OR (3) SAW OUT AFTER ALLEY PAVING  
UNLESS CONSTRUCTED PER SECTION B-B



**CONCRETE SIDEWALK**



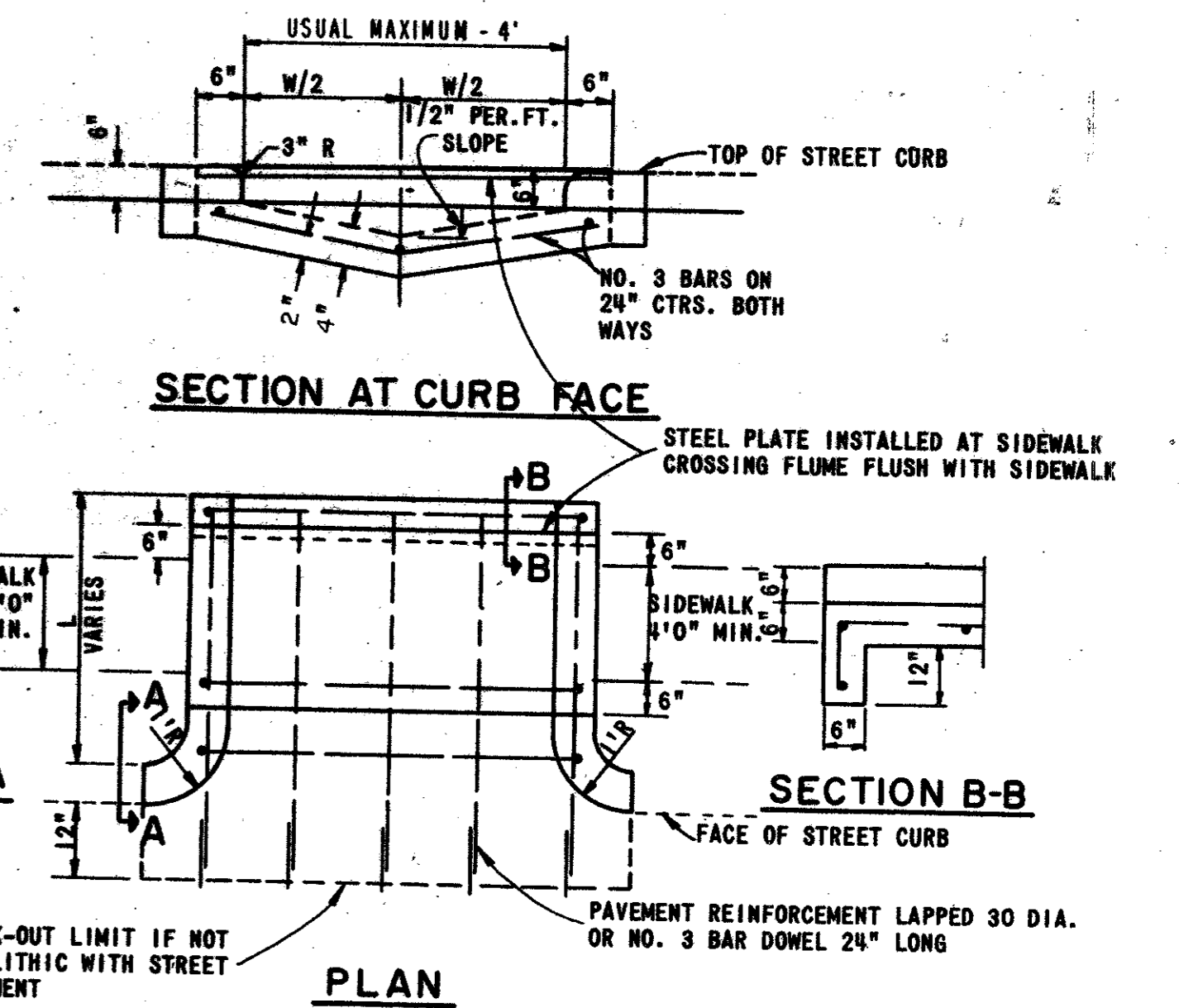
**REINFORCED CONCRETE SCREENING WALL**



**STEEL PLATE FLUME COVER**

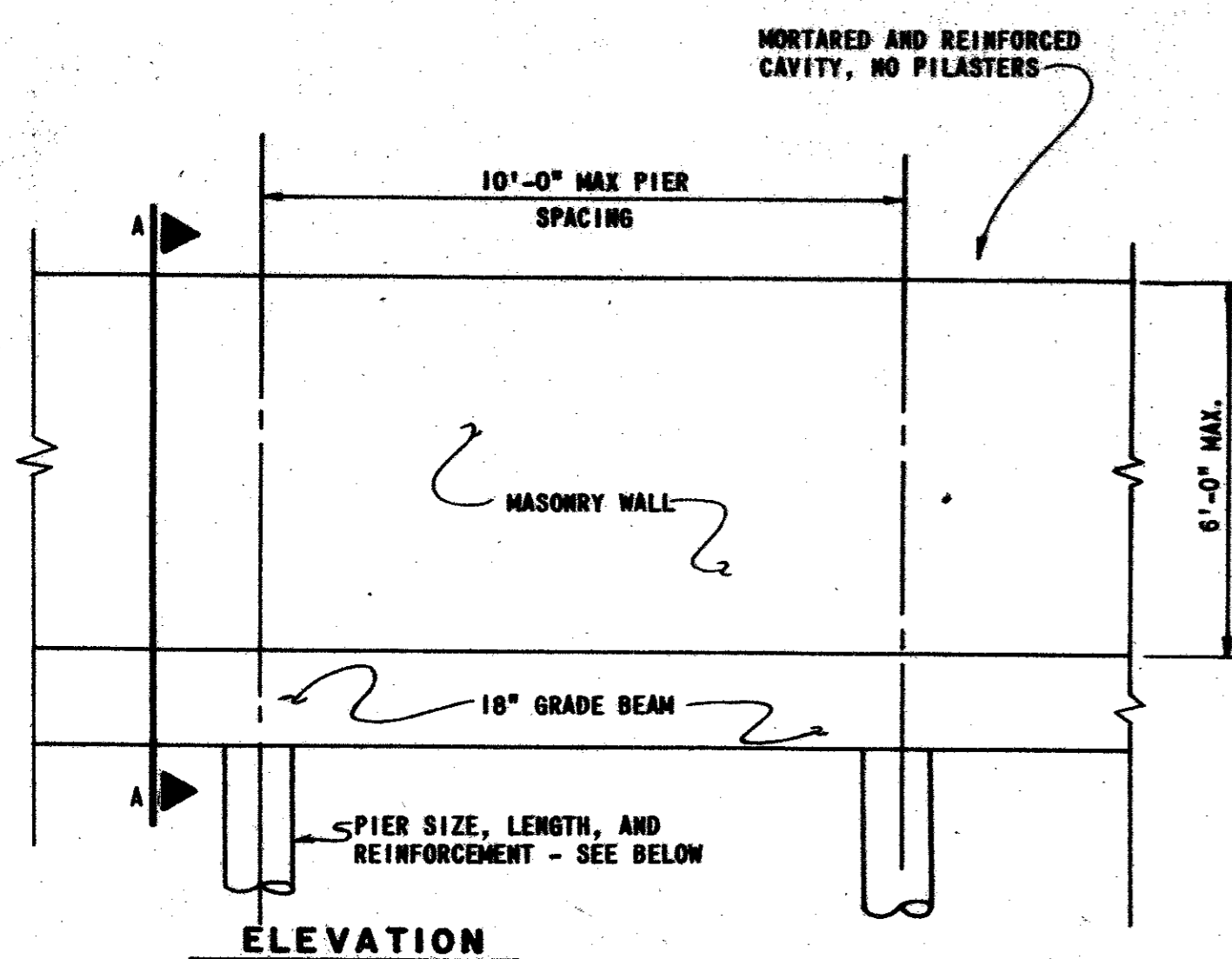
SPAN FEET	PLATE THICKNESS INCHES
4	1/2
6	5/8
8	3/4
10	7/8

BASED ON 100 P.S.I. LIVE  
LOAD AND MAX. DEAD & LIVE  
LOAD DEFLECTION OF L/240  
BOLT PLATE DOWN WITH  
BRASS BOLTS. SURFACE SHALL  
BE A NON-SKID MATERIAL.



**FLUME**

PAY ITEM 432.1

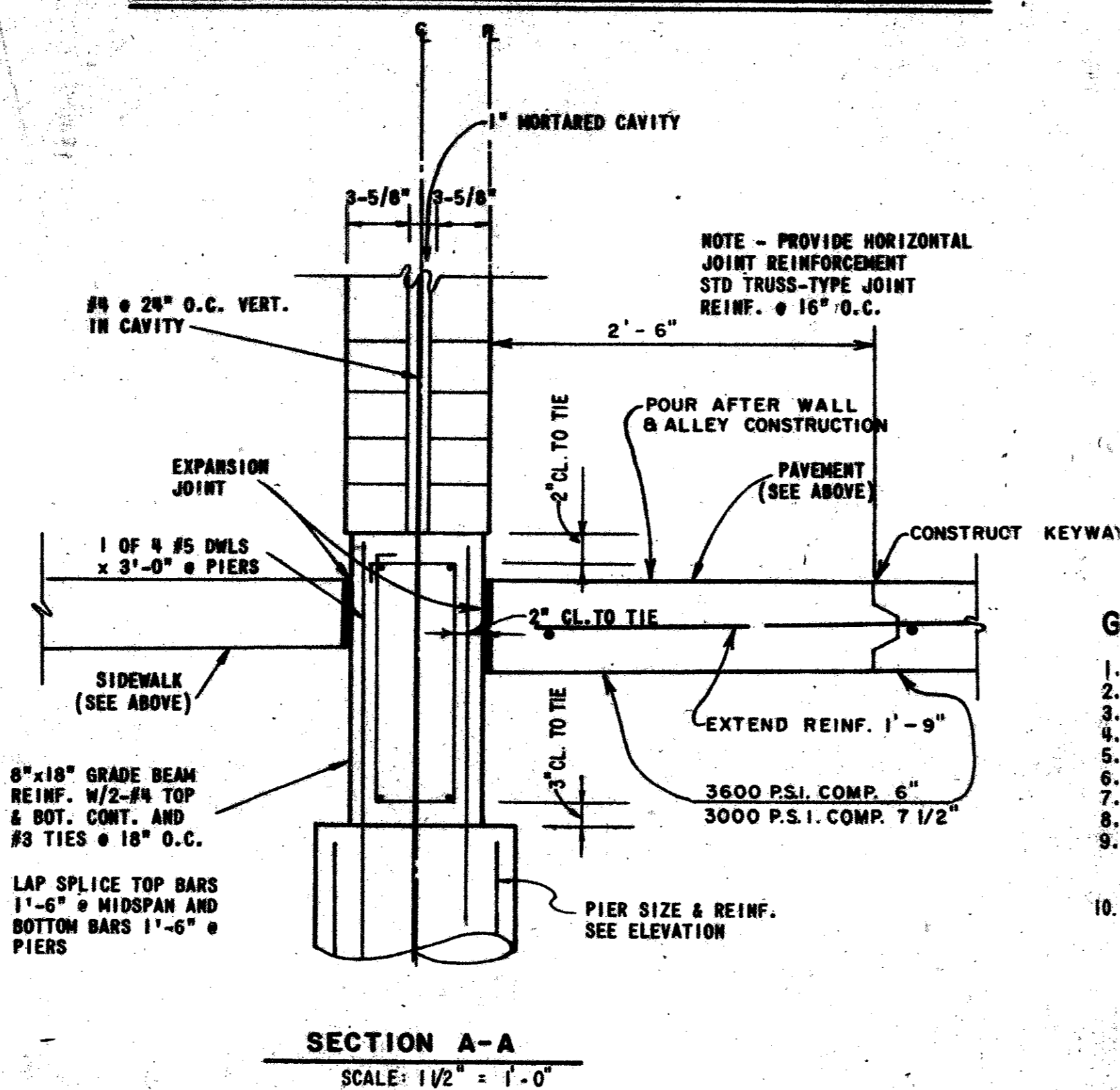


DRILLED PIERS - 12" #6 REINF. W/ 4-#4 VERT. & #4 TIES @ 24" O.C.  
MINIMUM LENGTH OF PIER IS 6'-0". \*PIER BOTTOM MAY BE EITHER OF  
THE TWO ALTERNATES:

- 12" #6 STRAIGHT SHAFT EMBEDDED MINIMUM 21'-0" INTO Limestone. RESULTING BEARING STRESS IS 8.0 KIPS PER SQUARE FOOT.
- 12" #6 SHAFT W/ 24" #4 BELL IN CLAY. RESULTING BEARING STRESS IS 2.0 KIPS PER SQUARE FOOT.

\* SEE GENERAL NOTE NO. 9

**BRICK SCREENING WALL**



**GENERAL NOTE:**

1. CONCRETE - NORMAL WEIGHT, 3000 PSI. @ 28 DAYS
2. REINFORCEMENT - ASTM A 615 - GR. 60
3. MASONRY - COMPRESSIVE STRENGTH OF 2000 PSI, f'm = 900 PSI
4. WIND LOAD - 20 PSF
5. PIER BEARING STRESSES - SEE BRICK SCREENING WALL NOTES
6. MORTAR - TYPE S, 1800 PSI
7. PROVIDE CONTROL JOINTS @ 50 FT.
8. PROVIDE EXPANSION JOINTS @ 200 FT ON CENTER MAXIMUM  
WHERE THERE IS NO ALLEY PAVEMENT, PROVIDE MIN. 9 FT.  
LENGTH OF PIERS. THIS APPLIES TO BOTH THE REINFORCED  
CONCRETE SCREENING WALL AND THE BRICK SCREENING WALL
9. ALL EXPOSED CONCRETE SHALL HAVE FINISHED SURFACE.

NO.	REVISION	BY	DATE
TOWN OF ADDISON, TEXAS DEPARTMENT OF ENGINEERING			
STANDARD CONSTRUCTION DETAILS PAVING			
SCREENING WALL - SIDEWALK			
APPROVED		H. WAYNE GINN, PE	
DATE	MARCH, 1984		SHEET 59-7

