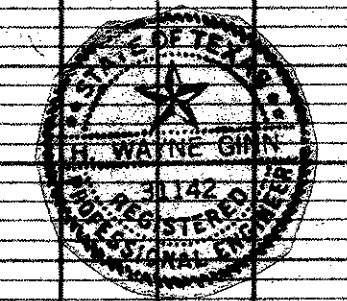
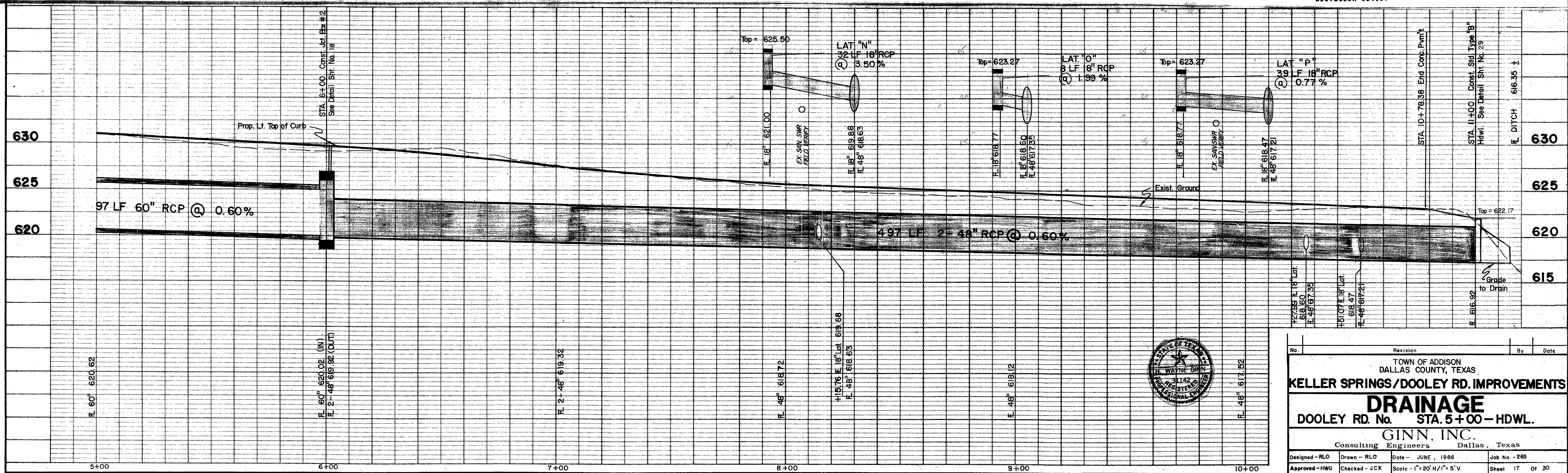


TBM - " " cut on N.W. top curb, corner of parking lot, Building 15950 Midway Road. Elevation 634.57

Addison Airport



No.		Revision		By		Date	
TOWN OF ADDISON DALLAS COUNTY, TEXAS							
KELLER SPRINGS/DOOLEY RD. IMPROVEMENTS							
DRAINAGE							
DOOLEY RD. No. STA. 5+00 - HDWL.							
GINN, INC.							
Consulting Engineers Dallas, Texas							
Designed - RLO	Drawn - RLO	Date - JUNE, 1986	Job No. - 265				
Approved - HWG	Checked - JCK	Scale - 1" = 20' H/1" = 5' V	Sheet 17		Of 30		