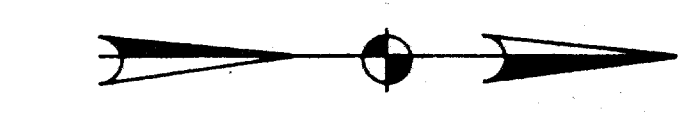


MATCH LINE 5+00

DOOLEY RD. No.



EXIST. CULVERT TO BE REMOVED
PAY ITEM NO. 100

EXIST. CULVERT TO BE REMOVED
PAY ITEM NO. 100

ADJUST W.V.
PAY ITEM 479.1

STA. 10+23.78
INSTALL 1-5\"/>

STA. 10+78.38
INSTALL 2-48\"/>

STA. 11+00 CONST. STD. HDWL.
TYPE \"B\" SEE DETAIL SHT. NO. 25
PAY ITEM. 475.3

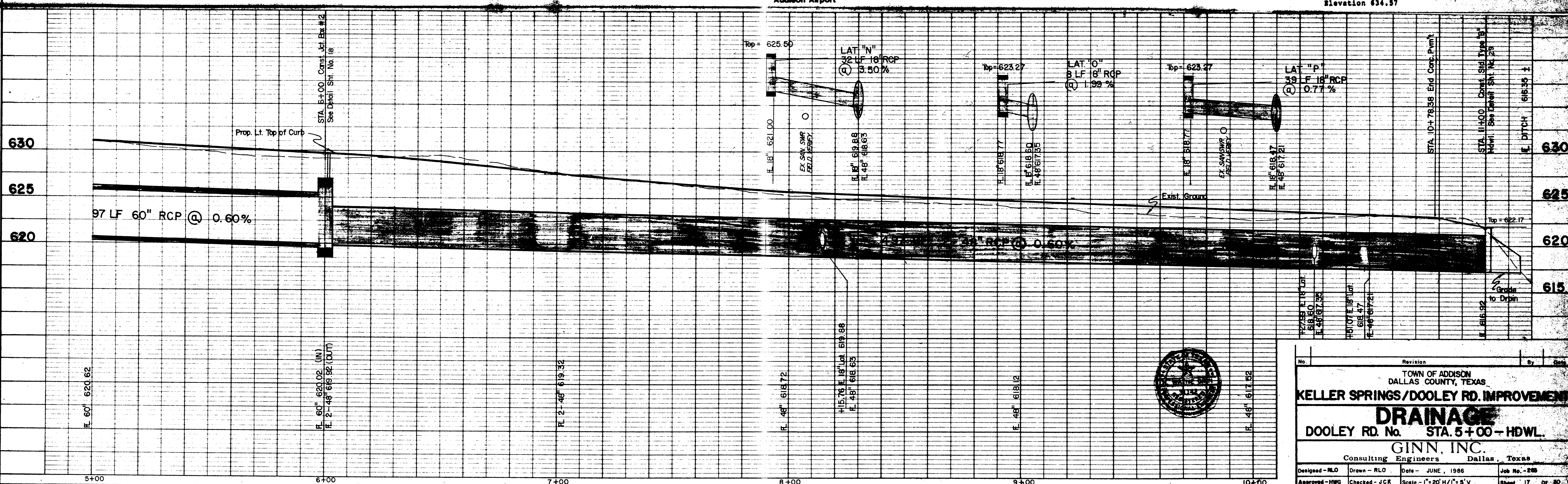
STA. 6+00-10' LT.
CONST. JUNCT. BOX NO. 2
TOP = 629.3 ± R.L. = 619.92
SEE DETAIL SHT. NO. 18
PAY ITEM 475.2

STA. 8+00
INSTALL 1-5\"/>

STA. 10+23.78
INSTALL 1-5\"/>

EXIST. 6' x 3' BOX
CULVERT
ASPHALT TRANS.
SEE PAVING SHT. NO. 10

TBM - " " cut on N.W. top curb, corner of parking lot,
Building 15950 Midway Road.
Elevation 634.57



No.		Revision		By		Date	
TOWN OF ADDISON DALLAS COUNTY, TEXAS							
KELLER SPRINGS/DOOLEY RD. IMPROVEMENT							
DRAINAGE							
DOOLEY RD. No. STA. 5+00-HDWL.							
GINN, INC.							
Consulting Engineers Dallas, Texas							
Designed - RLO	Drawn - RLO	Date - JUNE, 1986	Job No. - 288				
Approved - HWG	Checked - JCR	Scale - 1" = 20' H/1" = 8' V	Sheet 17	Of 30			