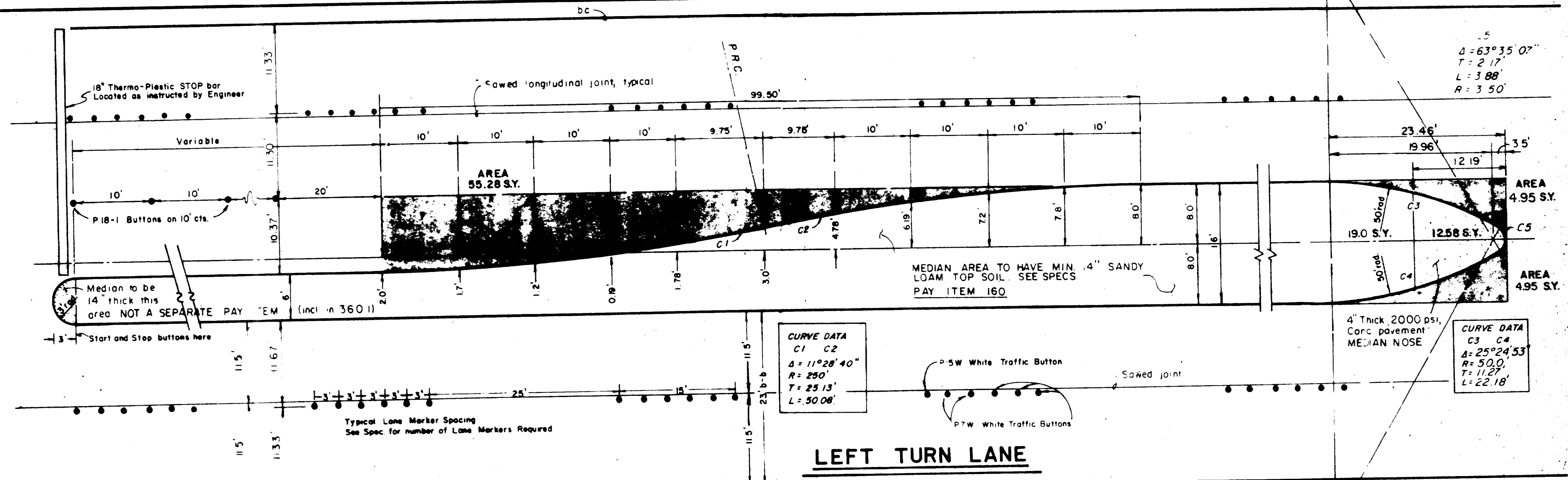
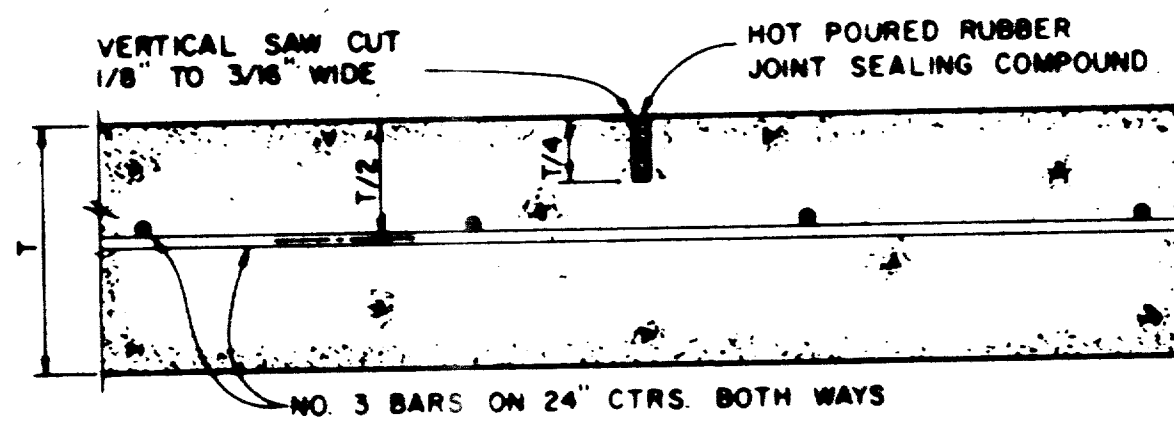


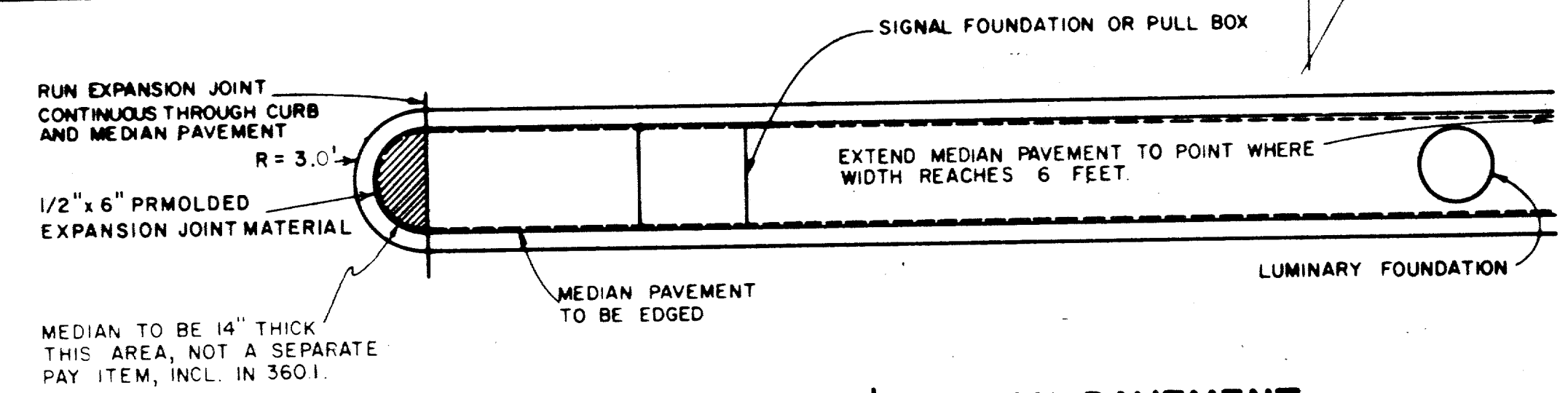
**SPACING DIAGRAM FOR TRANSVERSE JOINTS**



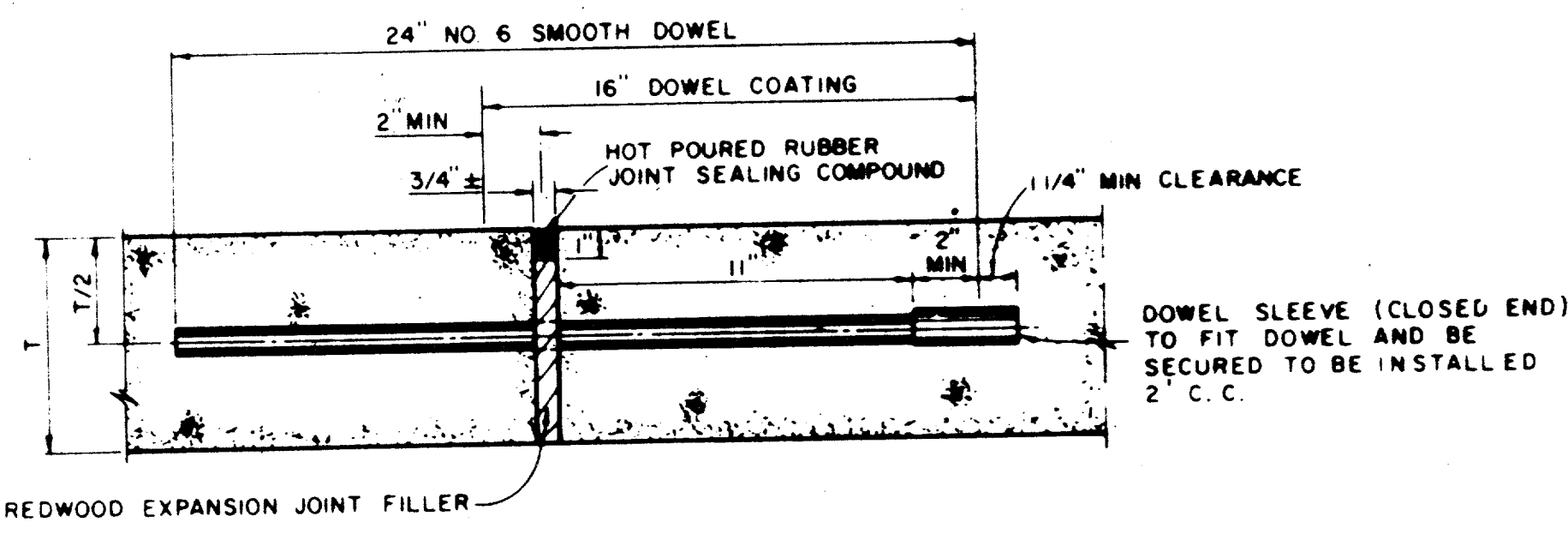
**LEFT TURN LANE**



**SAWED DUMMY JOINT**

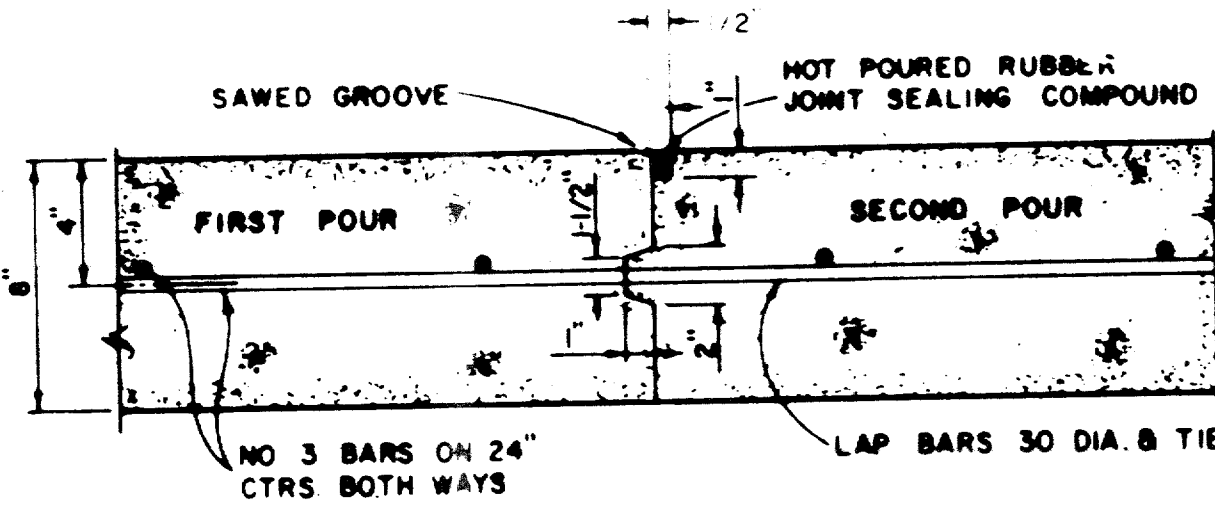


**DETAIL OF 6\"/>**

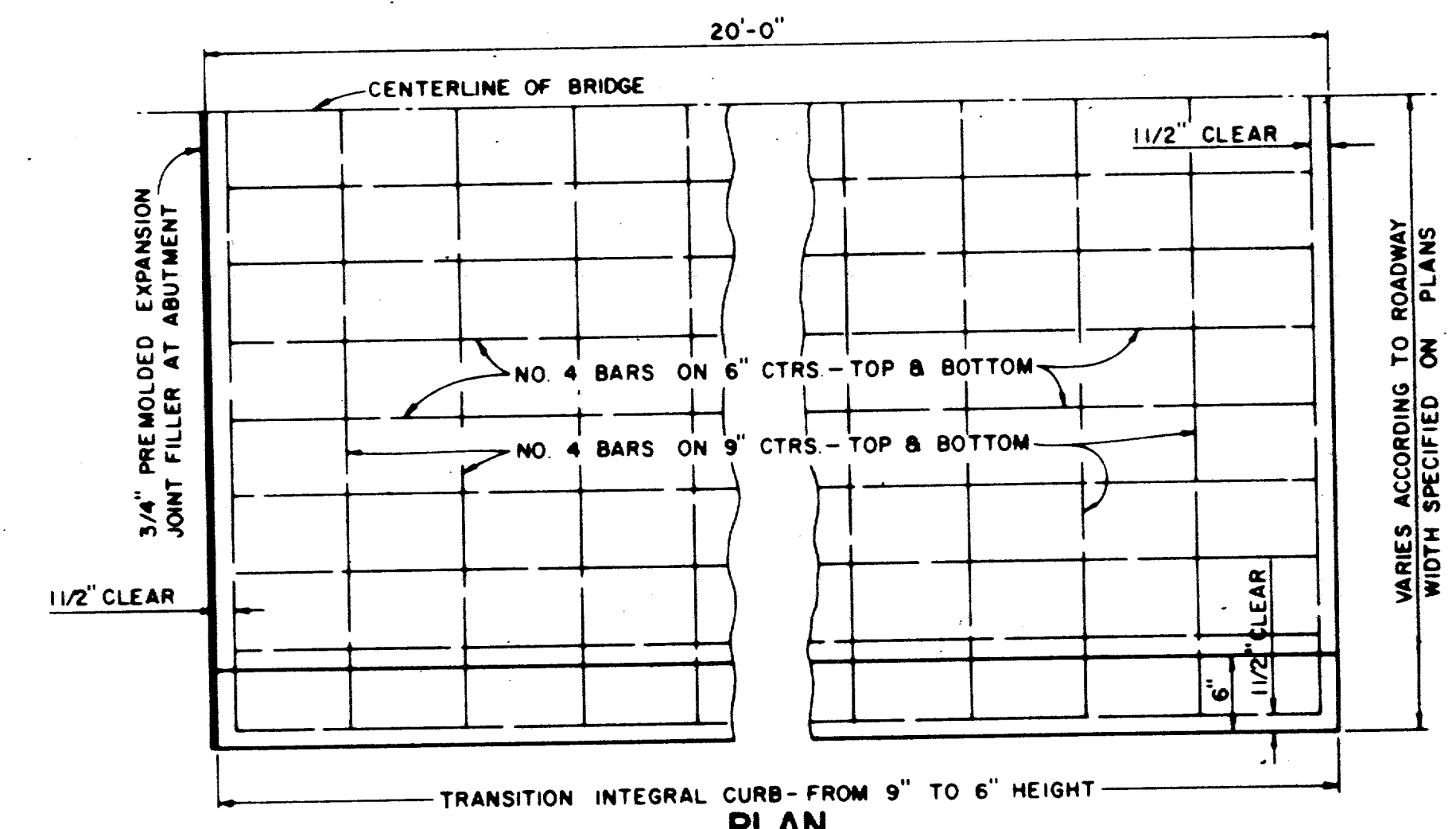


**TRANSVERSE EXPANSION JOINT**

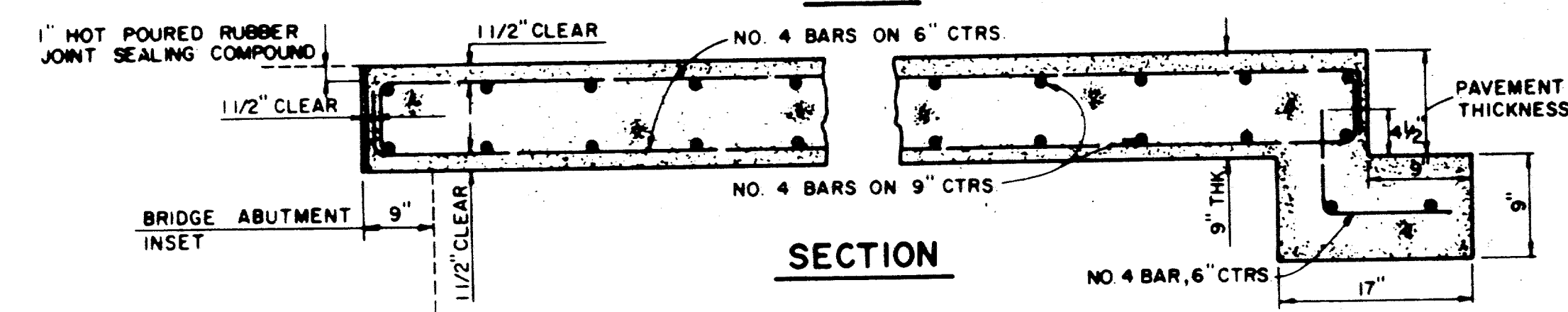
(SPACED 600 FT MAXIMUM; LOCATE AT INTERSECTIONS)



**CONSTRUCTION JOINT FOR 8\"/>**

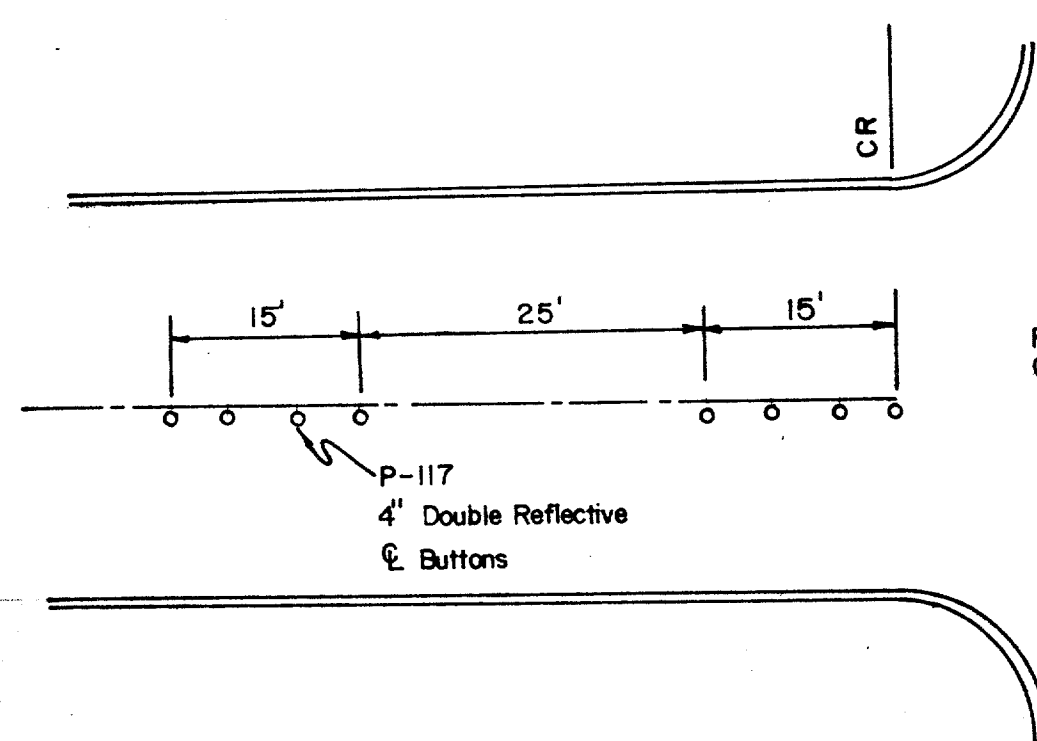


**PLAN**

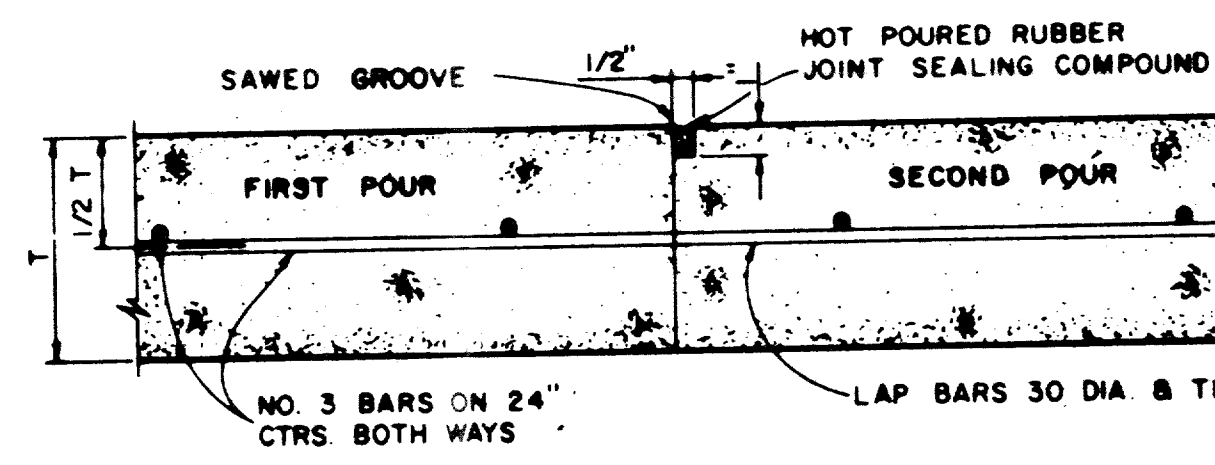


**SECTION**

**BRIDGE APPROACH SLAB**



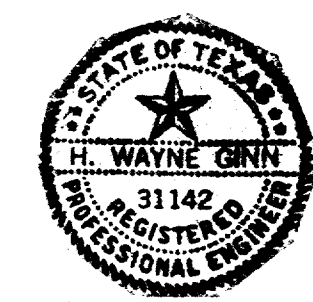
**STANDARD BUTTON LAYOUT**



**CONSTRUCTION JOINT FOR 5\"/>**

REFLECTORS PLACED 4\"/>

NOTE  
DOWELS AND REINFORCING BARS SHALL BE SUPPORTED BY AN APPROVED DEVICE



NO.	REVISION	BY	DATE
TOWN OF ADDISON, TEXAS DEPARTMENT OF ENGINEERING			
STANDARD CONSTRUCTION DETAILS PAVING			
PAVEMENT JOINTS			
APPROVED _____		H. WAYNE GINN, P.E.	
DATE MARCH, 1984		SHEET SD-3	