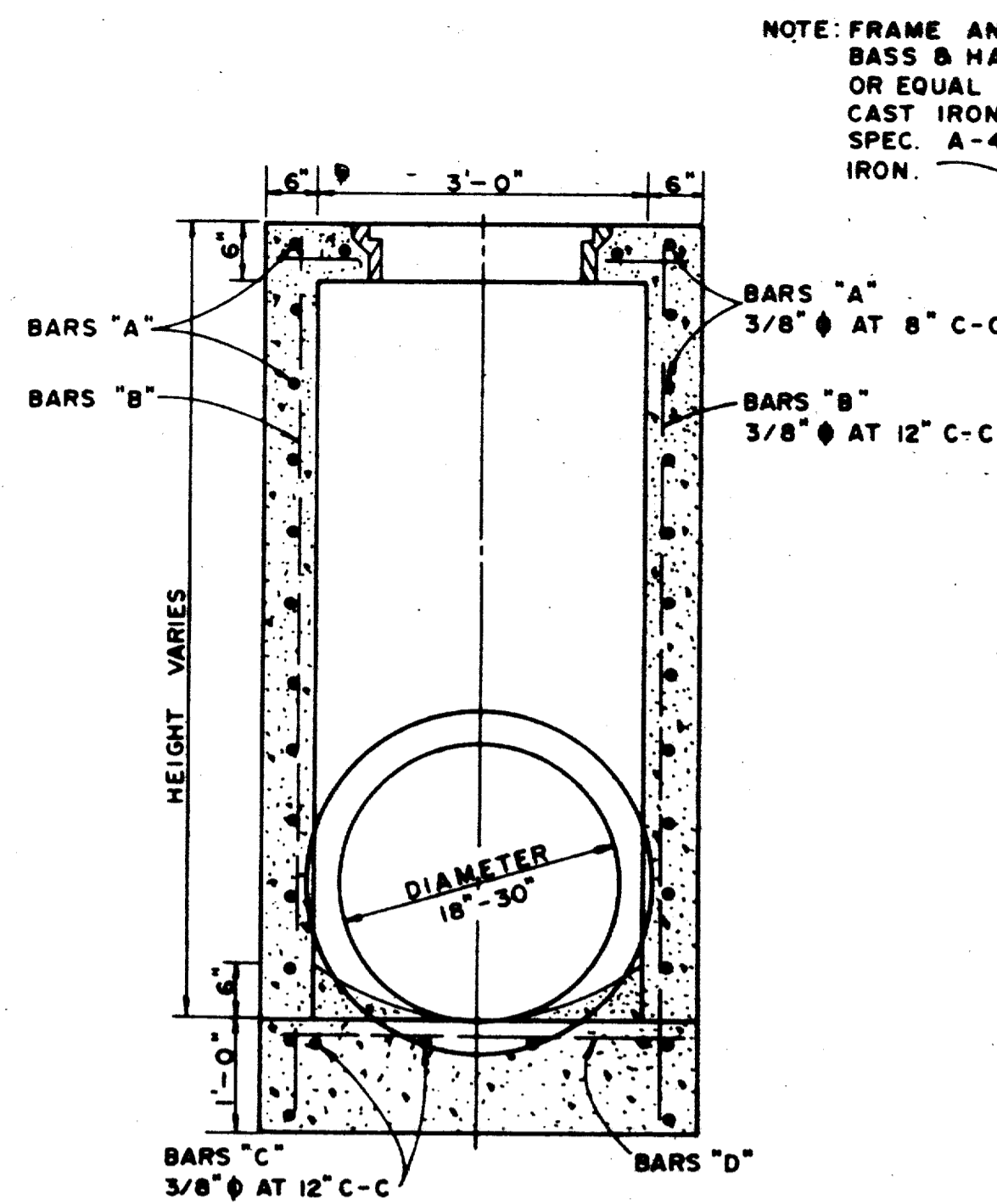


ELEVATION

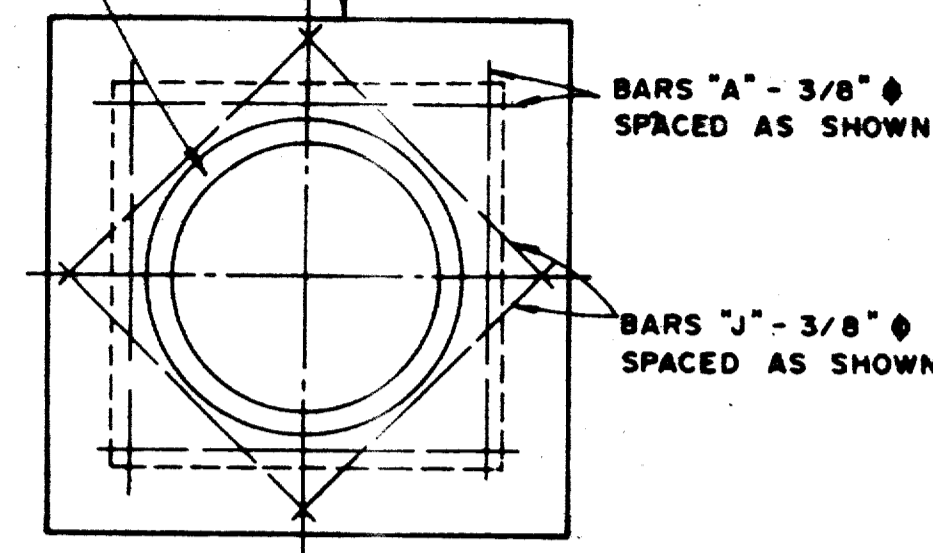
TYPE A STORM SEWER MANHOLE
(FOR PIPE 18" TO 30" IN DIAMETER)



SECTION A-A

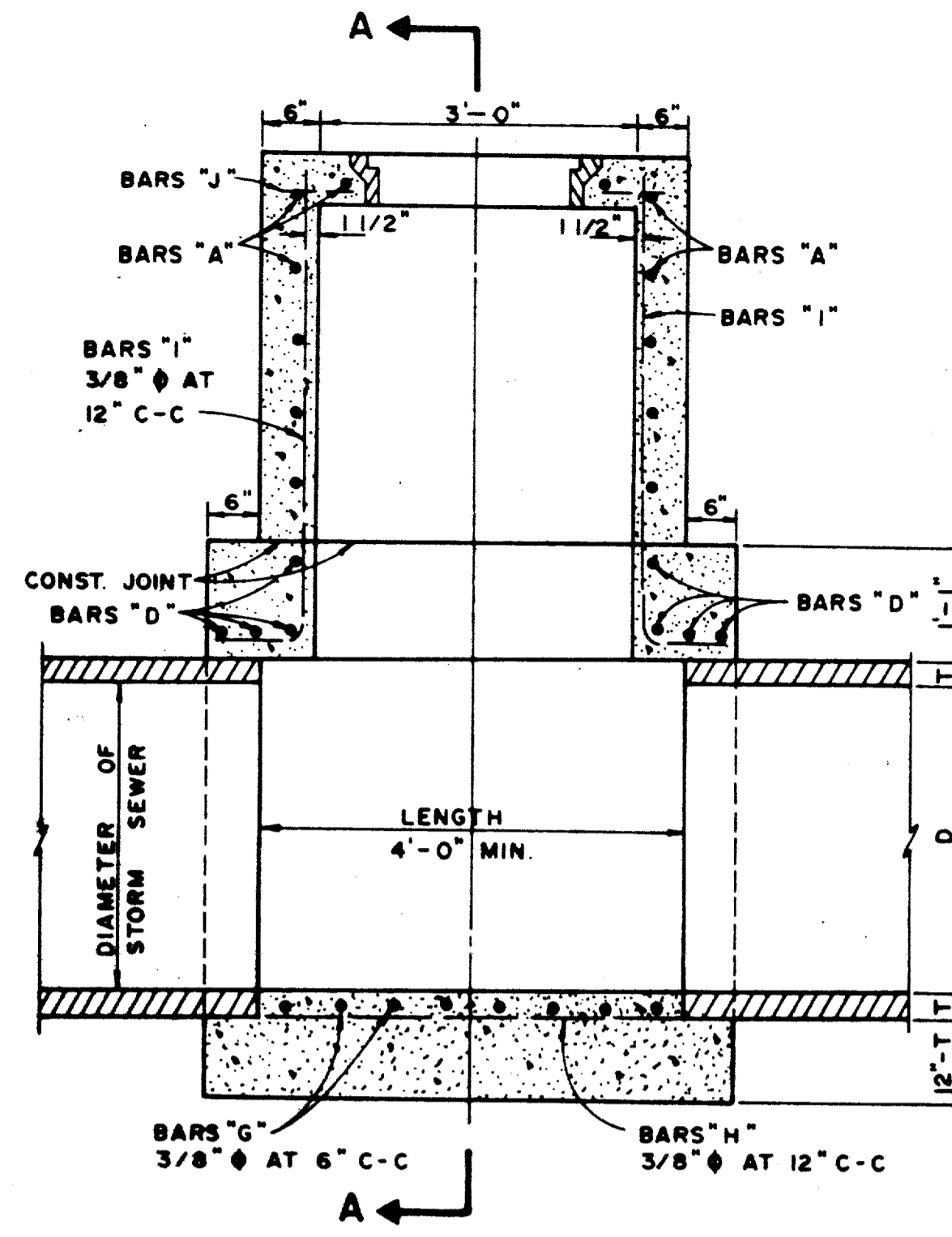
NOTE: FRAME AND COVER SHALL BE BASS & HAYS PATTERN NO. 380-24 OR EQUAL AND SHALL BE OF GRAY CAST IRON CONFORMING TO A.S.T.M. SPEC. A-48 FOR CLASS 30 CAST IRON.

PROVIDE 3/4" PREMOLDED EXPANSION JOINT BETWEEN MANHOLE AND CONCRETE PAVEMENT AND SEAL WITH HOT POURED RUBBER



TOP PLAN
TYPE A & TYPE B
STORM SEWER MANHOLE

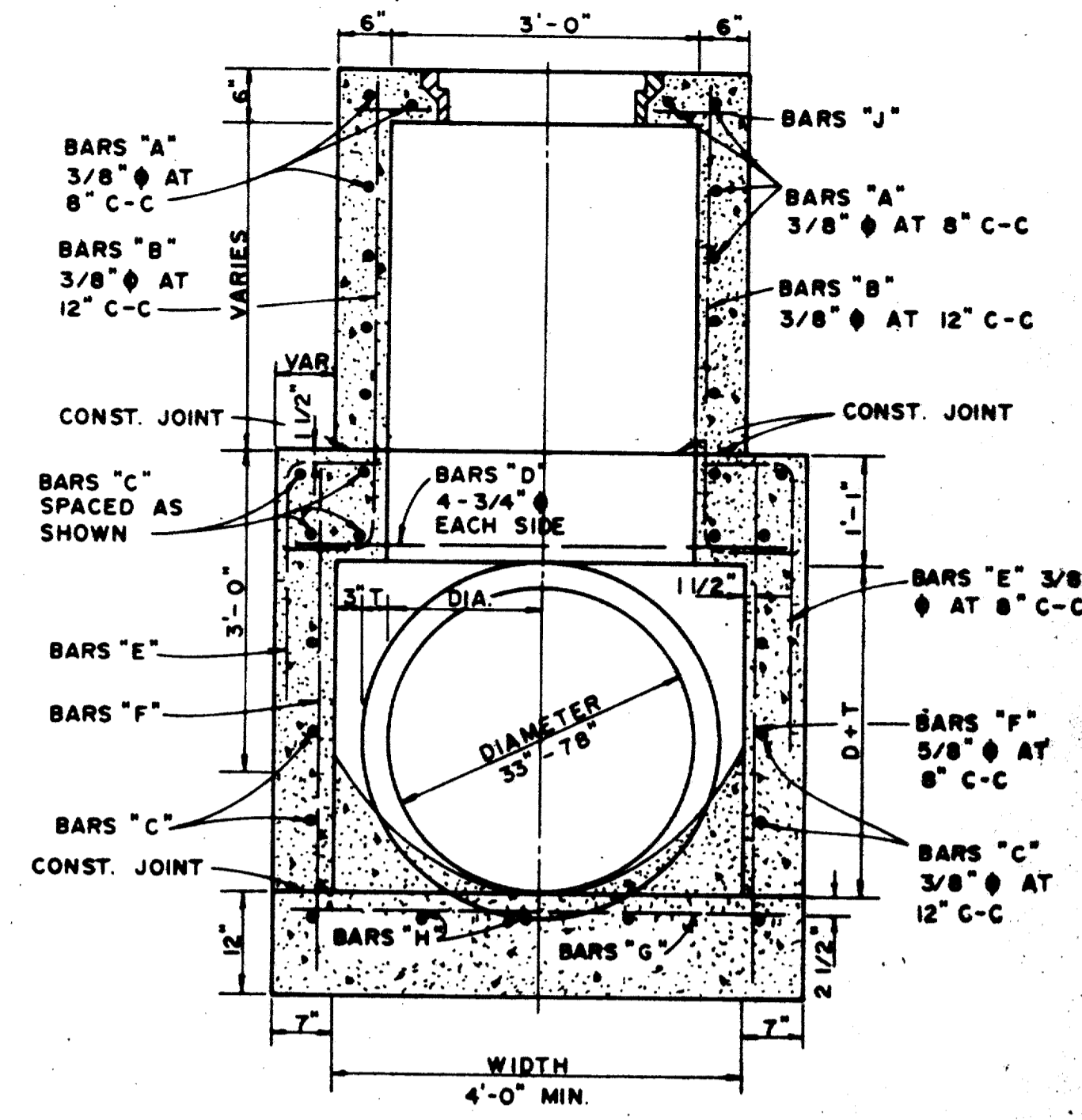
NOTE: MAXIMUM PIPE SIZE TO BE USED 78"



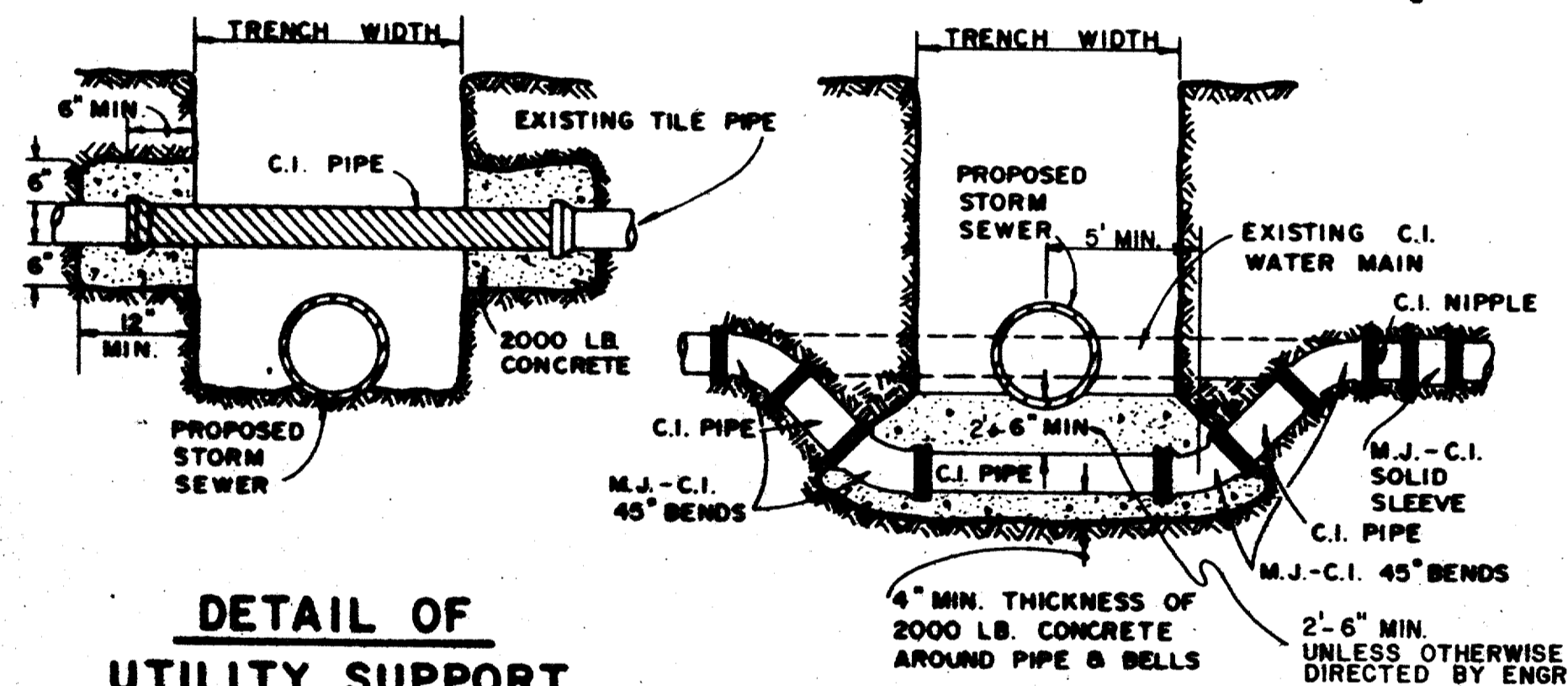
ELEVATION

TYPE B STORM SEWER MANHOLE
(FOR PIPE 33" TO 78" IN DIAMETER)

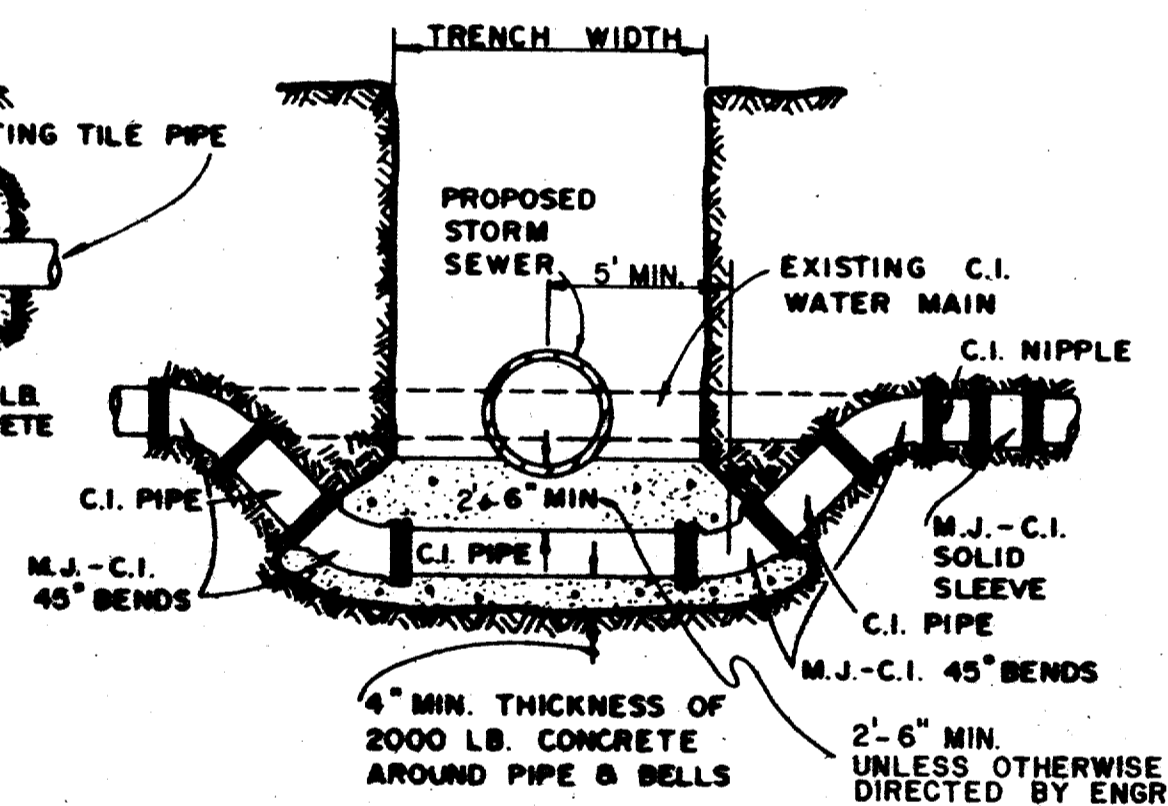
NOTE: SEE BAR DIAGRAMS, SHEET SD-9.



SECTION A-A

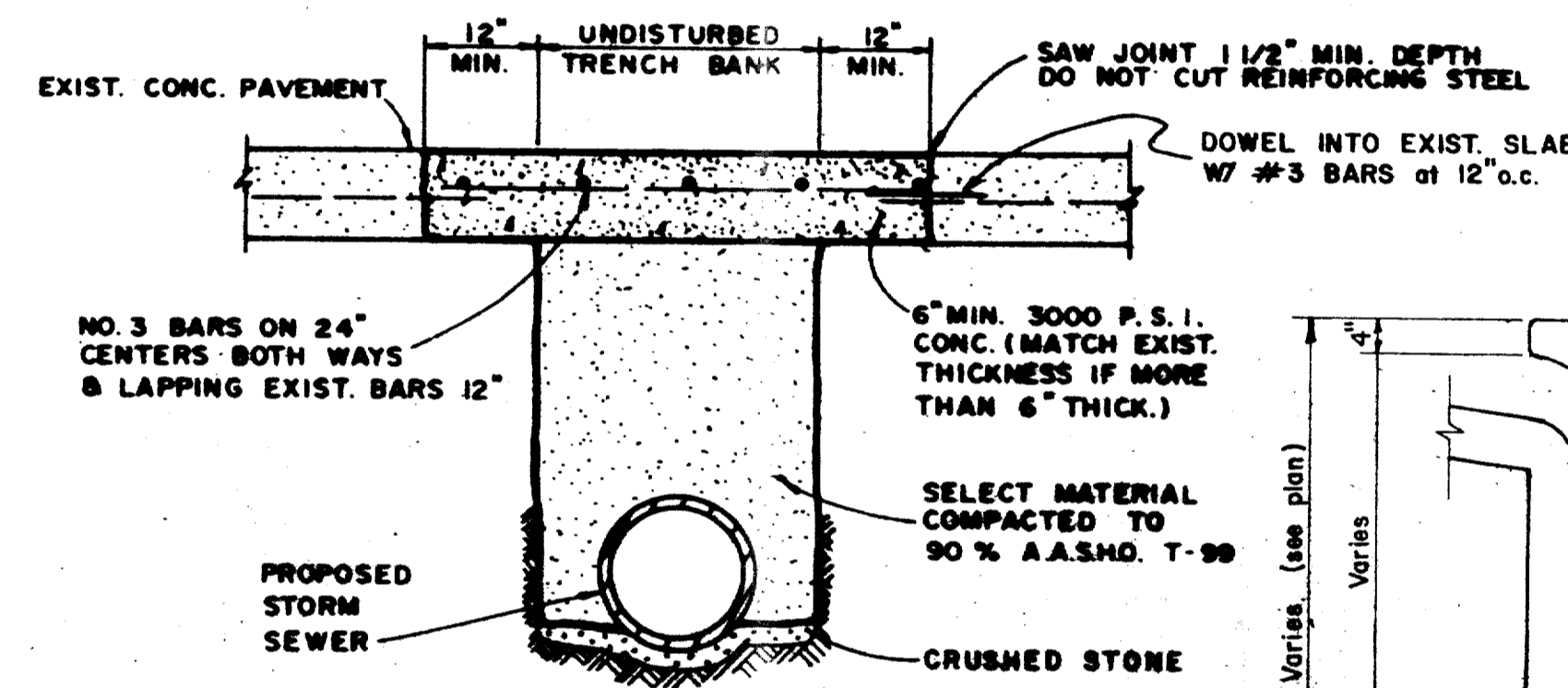


DETAIL OF UTILITY SUPPORT

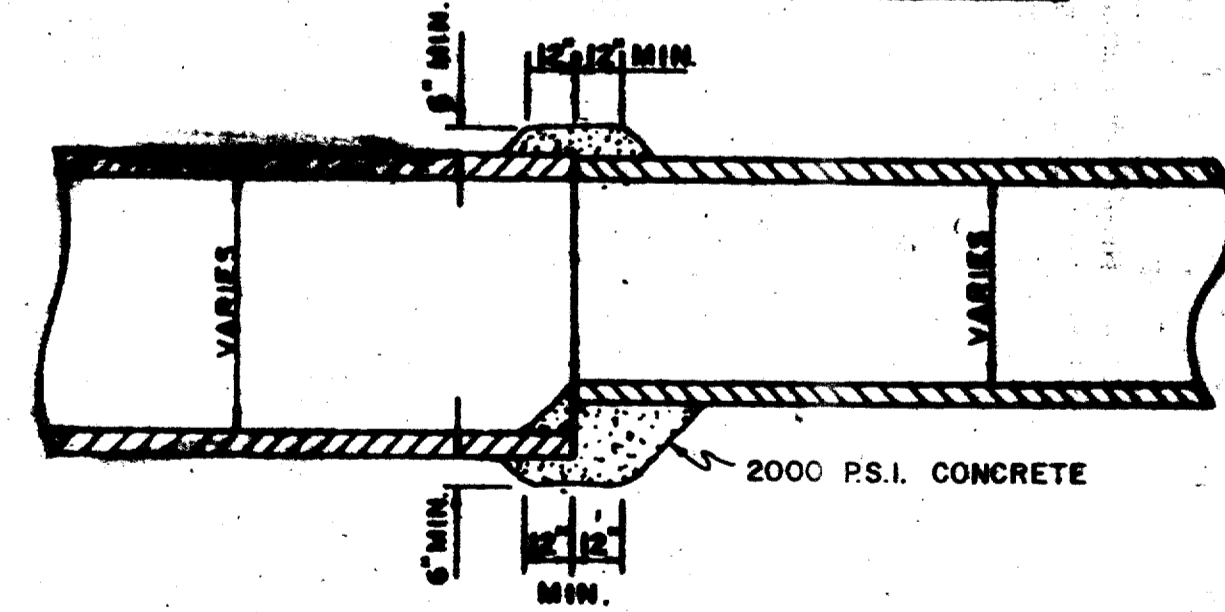


DETAIL FOR WATER MAIN LOWERING

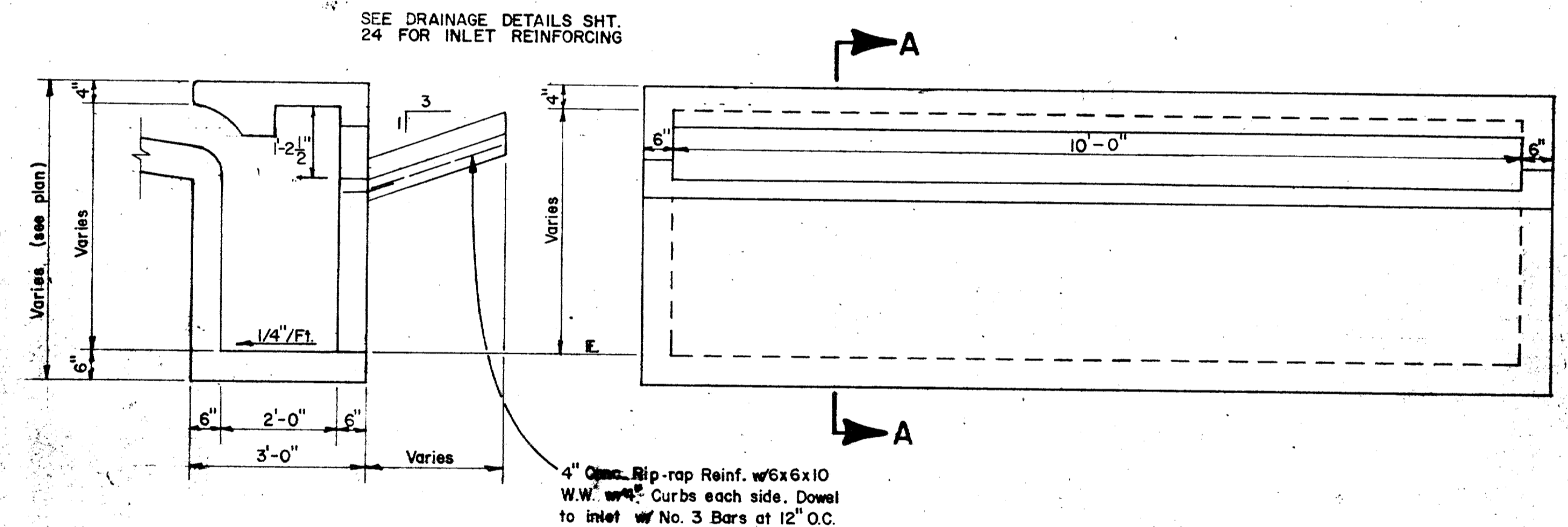
PAY ITEM 479.7



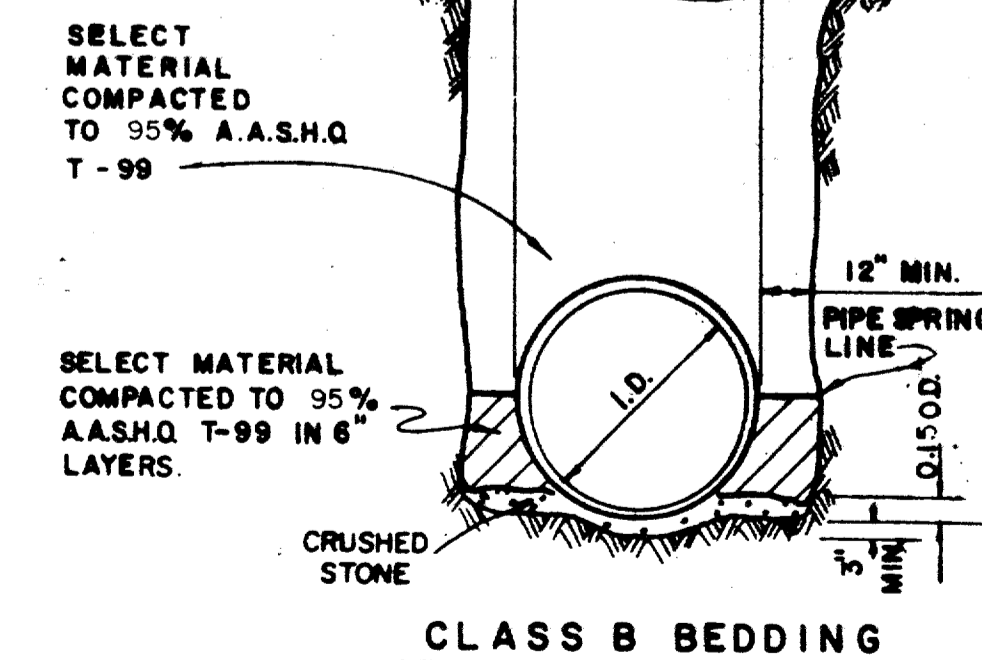
CONCRETE STREET OR DRIVEWAY REPAIR



DETAIL OF CONCRETE COLLAR FOR PIPE CONNECTIONS



SECTION A-A
MODIFIED CURB INLET WITH FLUME
REAR ELEVATION
PAY ITEM 470.21



STORM SEWER PIPE BEDDING DETAIL

NOTE: IF ROCK ENCOUNTERED IN TRENCH BOTTOM, OVEREXCAVATE TRENCH A MINIMUM 6" AND BED PIPE IN GRAVEL OR CRUSHED STONE. IF JETTED SAND IS USED IN BACKFILL ABOVE SPRING LINE OF CORRUGATED METAL PIPE THE SAND SHALL BE COMPLETELY DRAINED AND TESTED FOR 90% DENSITY PRIOR TO ANY BACKFILL OVER PIPE.



NO.	REVISION	BY	DATE
TOWN OF ADDISON, TEXAS DEPARTMENT OF ENGINEERING			
STANDARD CONSTRUCTION DETAILS STORM DRAINAGE			
MANHOLES			
APPROVED		H. WAYNE GINN, P.E.	
DATE MARCH, 1984		SHEET 30-8	