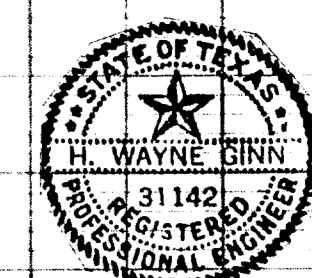
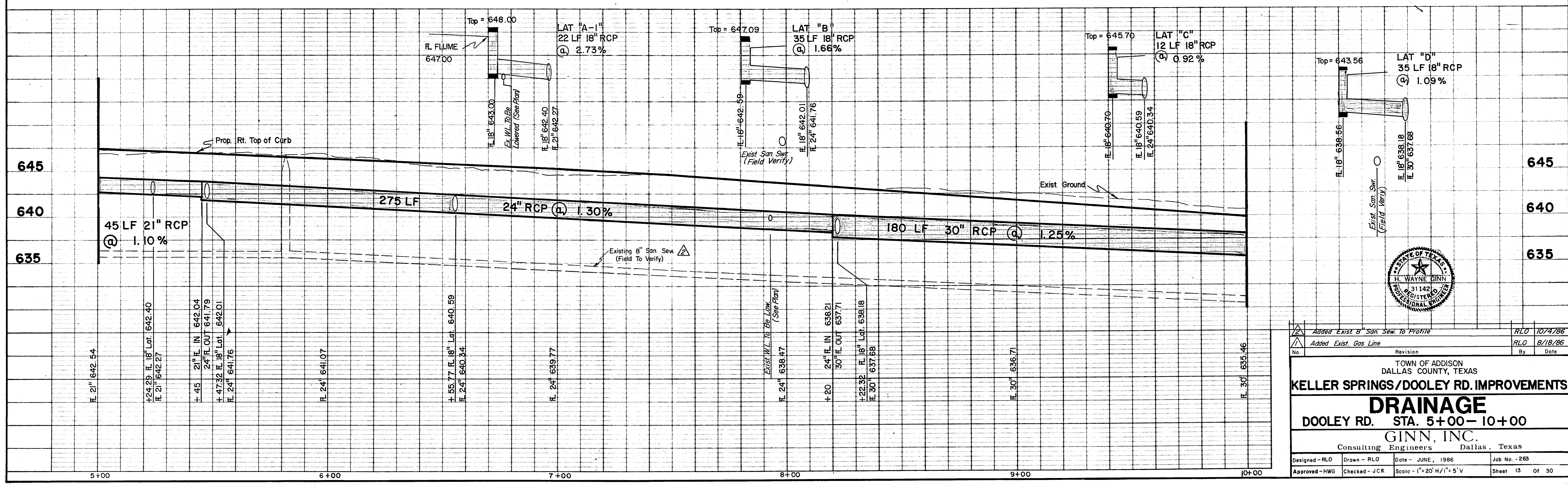


TBM - "□" cut on S.E. top curb corner, the back side parking lot, Building 15790 Midway Road. Elevation 637.75



Added Exist. 8" San. Sew. to Profile	RLO	10/7/86
Added Exist. Gas Line	RLO	8/18/86
Revision		
By Date		
TOWN OF ADDISON DALLAS COUNTY, TEXAS		
KELLER SPRINGS/DOOLEY RD. IMPROVEMENTS		
DRAINAGE		
DOOLEY RD. STA. 5+00-10+00		
GINN, INC.		
Consulting Engineers Dallas, Texas		
Designed - RLO	Drawn - RLO	Date - JUNE, 1986
Approved - HWG	Checked - JCK	Scale - 1" = 20' H/1" = 5' V
Job No. - 263		Sheet 13 Of 30