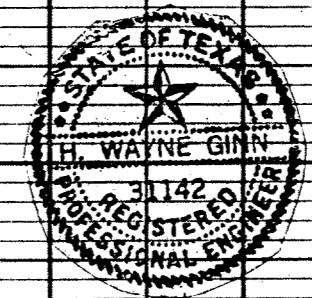
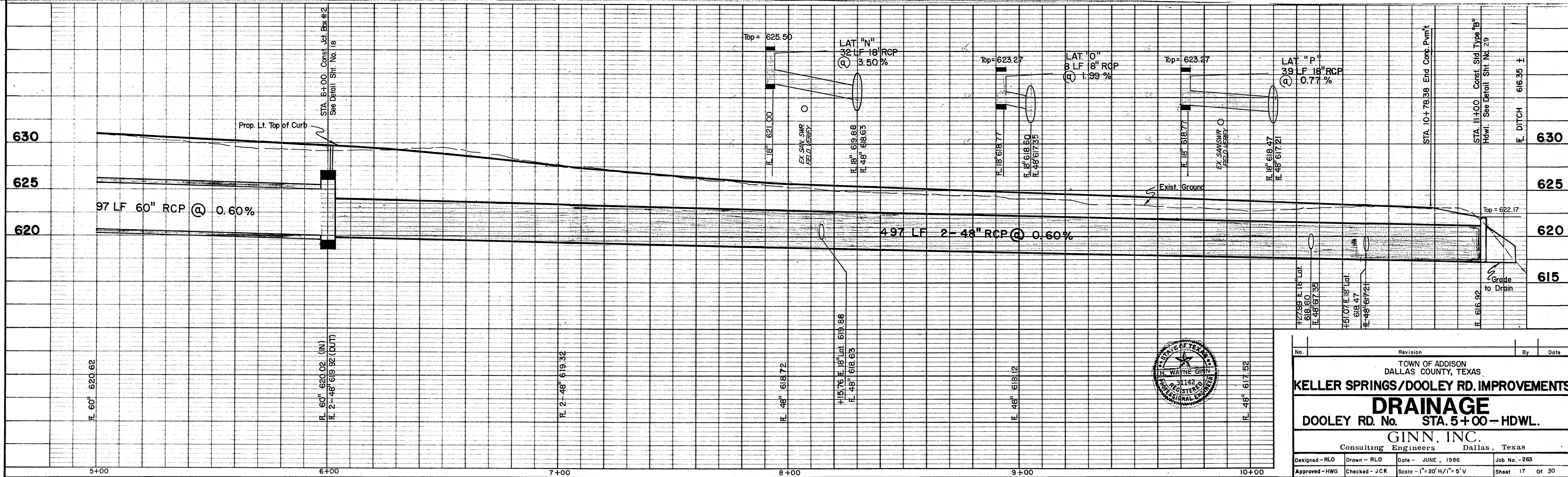


TBM - " " cut on N.W. top curb, corner of parking lot, Building 15950 Midway Road. Elevation 634.57

Addison Airport



No.	Revision	By	Date
TOWN OF ADDISON DALLAS COUNTY, TEXAS			
<b>KELLER SPRINGS/DOOLEY RD. IMPROVEMENTS</b>			
<b>DRAINAGE</b>			
DOOLEY RD. No. STA. 5+00 - HDWL.			
GINN, INC. Consulting Engineers Dallas, Texas			
Designed - RLO	Drawn - RLO	Date - JUNE, 1986	Job No. - 263
Approved - HWG	Checked - JCR	Scale - 1" = 20' H/1" = 5' V	Sheet 17 Of 30