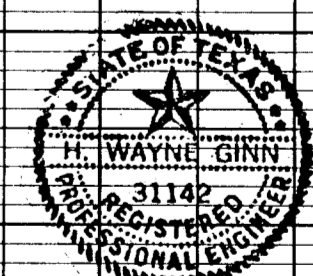
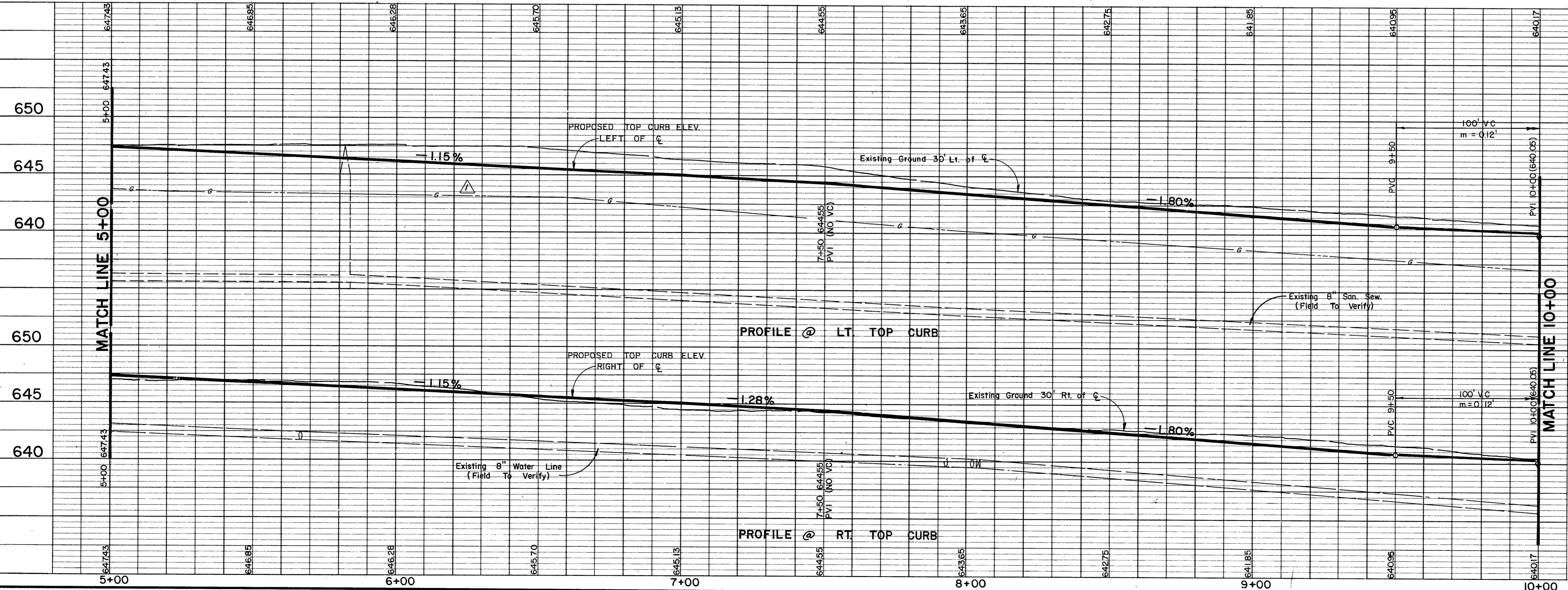


TBM - " " cut on S.E. top curb corner, the back side parking lot, Building 15950 Midway Road. Elevation 637.75



Added Exist. Gas Line Location		RLO	8/18/86
No.	Revision	By	Date
TOWN OF ADDISON DALLAS COUNTY, TEXAS			
<b>KELLER SPRINGS/DOOLEY RD. IMPROVEMENTS</b>			
<b>DOOLEY ROAD</b>		<b>PLAN &amp; PROFILE</b>	
PAVING STA 5+00 TO 10+00		GINN, INC.	
Consulting Engineers Dallas, Texas			
Designed - GF/JK	Drawn - RLO	Date - DECEMBER, 1985	Job No. - 263
Approved - HWG	Checked - JCK	Scale - 1"=20'H/1"=5'V	Sheet 5 of 30