

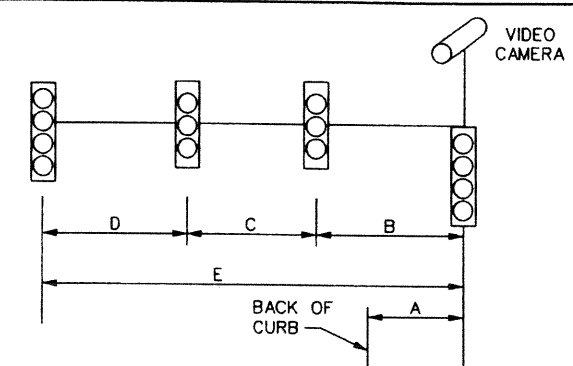
CONDUIT RUNS

| RUN NO. | QUANTITY | SIZE | TYPE | METHOD | *6 XHHW | *6 BARE | COAX CABLE | 4 CNDR OPTICOM | 3 CNDR (VIDEO) | 12 CNDR | 19 CNDR | CONDUIT LENGTH | CABLE LENGTH | RUN NO. |
|------------|----------|------|------|--------|---------|---------|------------|----------------|----------------|---------|---------|----------------|--------------|---------|
| A | 3 | 3" | PVC | Trench | 2 | 1 | 4 | 4 | 4 | | 4 | 20 | 25 | A |
| B | 1 | 3" | PVC | Trench | | 1 | 1 | 2 | 1 | | 1 | 9 | 14 | B |
| C | 1 | 4" | PVC | Bored | | 1 | 2 | 1 | 2 | | 2 | 84 | 94 | C |
| D | 1 | 3" | PVC | Trench | | 1 | 1 | | 1 | | 1 | 7 | 12 | D |
| E | 1 | 4" | PVC | Bored | | 1 | 1 | 1 | 1 | | 1 | 94 | 104 | E |
| F | 1 | 3" | PVC | Trench | | 1 | 1 | 1 | 1 | | 1 | 9 | 14 | F |
| G | 1 | 4" | PVC | Bored | | | | | | | | 91 | 101 | G |
| H | 1 | 3" | PVC | Trench | | 1 | 1 | 1 | 1 | | 1 | 9 | 14 | H |
| I | 1 | 4" | PVC | Bored | | 1 | 1 | 1 | 1 | | 1 | 93 | 103 | I |
| J | 1 | 1" | RM | Trench | 2 | 1 | | | | | | 20 | 25 | J |
| TOTAL (LF) | | | | | 100 | 405 | 549 | 457 | 549 | | 549 | | | |

CABLE TERMINATION CHART

| CABLE CONDUCTOR | T-1 (19 CNDR) | | T-2 (19 CNDR) | | T-3 (19 CNDR) | | T-4 (19 CNDR) | |
|-----------------|---------------|------------|---------------|------------|---------------|------------|---------------|------------|
| | S.H. NO. | INDICATION | S.H. NO. | INDICATION | S.H. NO. | INDICATION | S.H. NO. | INDICATION |
| BLACK | 1 | ← Y | 4 | ← Y | 7 | ← Y | 10 | ← Y |
| WHITE | | COMMON | | COMMON | | COMMON | | COMMON |
| RED | 1-3 | R | 4-6 | R | 7-9 | R | 10-12 | R |
| GREEN | 1-3 | G | 4-6 | G | 7-9 | G | 10-12 | G |
| ORANGE | 1-3 | Y | 4-6 | Y | 7-9 | Y | 10-12 | Y |
| BLUE | 1 | ← G | 4 | ← G | 7 | ← G | 10 | ← G |
| WHT/BLK | SPARE | | SPARE | | SPARE | | SPARE | |
| RED/BLK | 13 | DW | 15 | DW | 17 | DW | 19 | DW |
| GRN/BLK | 13 | W | 15 | W | 17 | W | 19 | W |
| ORN/BLK | SPARE | | SPARE | | SPARE | | SPARE | |
| BLUE/BLK | SPARE | | SPARE | | SPARE | | SPARE | |
| BLK/WHT | PB 13 | Ø2 | PB 15 | Ø4 | PB 17 | Ø6 | PB 19 | Ø8 |
| RED/WHT | 14 | DW | 16 | DW | 18 | DW | 20 | DW |
| GRN/WHT | | PB COM | | PB COM | | PB COM | | PB COM |
| BLUE/WHT | 14 | W | 16 | W | 18 | W | 20 | W |
| BLK/RED | 21 | R | SPARE | | SPARE | | SPARE | |
| WHT/RED | PB 14 | Ø4 | PB 16 | Ø6 | PB 18 | Ø8 | PB 20 | Ø2 |
| BLUE/RED | 21 | Y | SPARE | | SPARE | | SPARE | |
| ORN/RED | 21 | G | SPARE | | SPARE | | SPARE | |

SIGNAL HEAD AND POLE PLACEMENT



| POLE NUMBER | A | B | C | D | E | FND |
|-------------|----|----|----|----|----|------|
| T-1 | 6 | 13 | 11 | 11 | 35 | 30-A |
| T-2 | 6 | 16 | 12 | 12 | 40 | 36-A |
| T-3 | 10 | 18 | 11 | 11 | 40 | 36-A |
| T-4 | 9 | 16 | 12 | 12 | 40 | 36-A |

| POLE NUMBER | 4-CNDR | 5-CNDR | 7-CNDR | COAX | 3-CNDR |
|-------------|--------|--------|--------|------|--------|
| T-1 | 70 | 105 | 60 | 35 | 35 |
| T-2 | 45 | 112 | 65 | 35 | 35 |
| T-3 | 50 | 115 | 65 | 35 | 35 |
| T-4 | | 112 | 65 | 35 | 35 |
| TOTAL (LF) | 165 | 444 | 255 | 140 | 140 |

SIGNAL HEADS

| NO | TYPE | PHASE | BACKPLATE | | SIGNAL HEAD | | PED SIG SEC |
|--------|-------|-------|-----------|-------|-------------|-------|-------------|
| | | | 3 SEC | 4 SEC | 3 SEC | 4 SEC | |
| 1 | V4LT* | Ø7-Ø4 | | 1 | | 1 | |
| 2 | V3 | Ø4 | 1 | | 1 | | |
| 3 | V3 | Ø4 | 1 | | 1 | | |
| 4 | V4LT* | Ø1-Ø6 | | 1 | | 1 | |
| 5 | V3 | Ø6 | 1 | | 1 | | |
| 6 | V3 | Ø6 | 1 | | 1 | | |
| 7 | V4LT* | Ø3-Ø8 | | 1 | | 1 | |
| 8 | V3 | Ø8 | 1 | | 1 | | |
| 9 | V3 | Ø8 | 1 | | 1 | | |
| 10 | V4LT* | Ø5-Ø2 | | 1 | | 1 | |
| 11 | V3 | Ø2 | 1 | | 1 | | |
| 12 | V3 | Ø2 | 1 | | 1 | | |
| 13,20 | PED | Ø2 | | | | | 2 |
| 14,15 | PED | Ø4 | | | | | 2 |
| 16,17 | PED | Ø6 | | | | | 2 |
| 18,19 | PED | Ø8 | | | | | 2 |
| 21 | V3 | Ø2 | 1 | | 1 | | |
| TOTALS | | | 9 | 4 | 9 | 4 | 8 |

* -Use green/yellow fiber optic turn arrow.

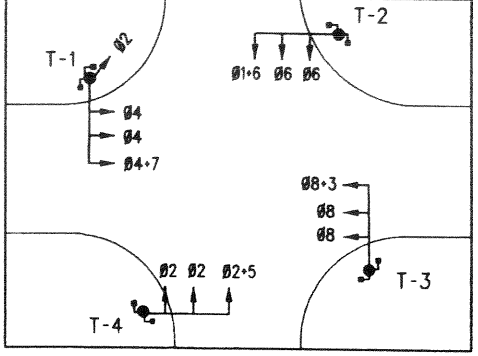
SIGN SUMMARY

| LOCATION | SIGN TYPE | DESCRIPTION | SIZE |
|----------|-----------|-----------------|---------|
| T-1 ARM | R10-12(S) | LEFT TURN YIELD | 24"x30" |
| T-2 ARM | R10-12(S) | LEFT TURN YIELD | 24"x30" |
| T-3 ARM | R10-12(S) | LEFT TURN YIELD | 24"x30" |
| T-4 ARM | R10-12(S) | LEFT TURN YIELD | 24"x30" |
| T-2 ARM | R3-4 | NO U TURN | 24"x24" |
| T-4 ARM | R3-4 | NO U TURN | 24"x24" |

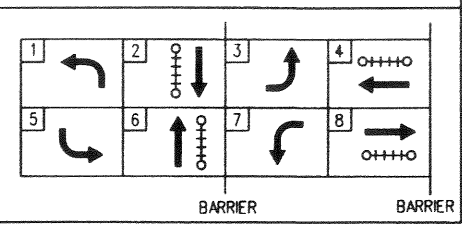
| TYPE | EA |
|------|----|
| A | 3 |
| C | 1 |

| SIZE | TYPE | LENGTH (LF) |
|--------|--------|-------------|
| 1" RM | Trench | 20 |
| 3" PVC | Trench | 94 |
| 4" PVC | Bore | 362 |

SIGNAL HEAD PHASING

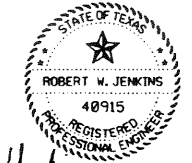


NEMA PHASE DIAGRAM



NOTES: Phases 1, 3, 5, + 7 are protected/permissive left turn phases.

AS-BUILT



Robert W. Jenkins
Professional Engineer

4/15/99

| | | |
|--|---|-----------------|
| 4/15/99 | ADDED SIGNAL HEAD 21 AND RELATED DATA CHANGES TO CABLE TERMINATION, SIGNAL HEAD, AND PHASING CHARTS | CWW/RWJ |
| DATE | REVISION | BY |
| TOWN OF ADDISON DALLAS COUNTY, TEXAS | | |
| INTERSECTION LAYOUT TABLES KELLER SPRINGS ROAD AT QUORUM DRIVE | | |
| PROJECT No. | | |
| PARSONS TRANSPORTATION GROUP 2630 W. FREEWAY #132 • FORT WORTH, TEXAS 76102 • (817) 877-5803 | | |
| DESIGNED : | S.C.B. | DRAWN : C. W.W. |
| APPROVED : | R.W.J. | CHECKED : A.M. |
| | | FILE : KEL-TAB |
| | | SHEET 13 OF 20 |