

BENCHMARKS:

"□" CUT ON INLET SW CORNER OF RATLIFF & ADDISON RD. ELEV. = 637.20

"□" CUT ON INLET SE CORNER OF AIRPORT PKWY. & QUORUM DR. ELEV. = 631.15

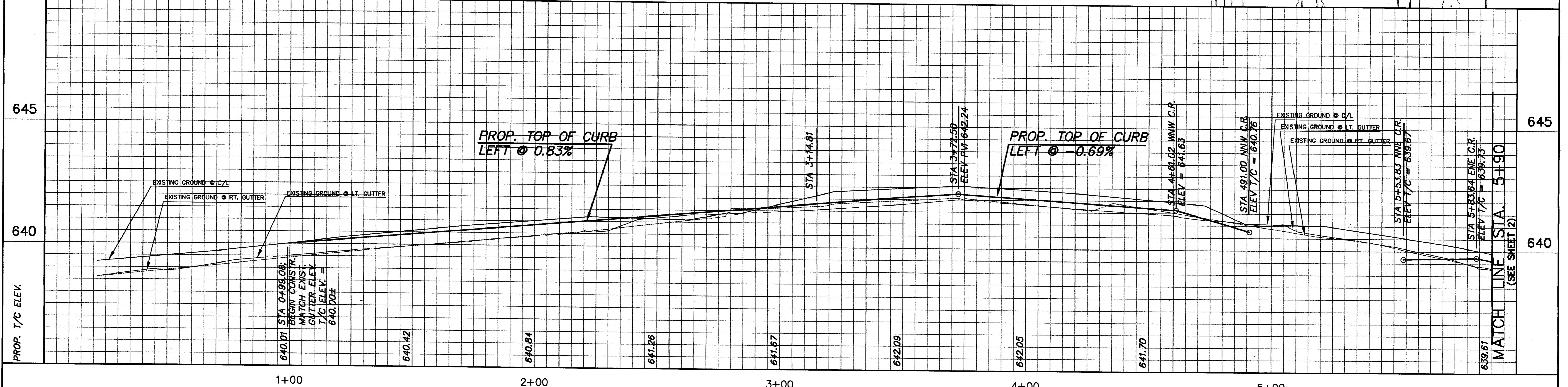
LEGEND:

- PROPOSED SIDEWALK
- PROPOSED DRIVE APPROACH
- PROPOSED CONCRETE PAVEMENT
- PROPOSED VARIABLE-WIDTH CONCRETE PAVEMENT

PNT. NO.	DESCRIPTION	STATION	OFFSET	ELEVATION
1	PCR	1+12.85	23.40' LT.	640.12
2	PT	1+21.73	29.94' LT.	640.54
3	PT	1+49.44	30.07' LT.	640.71
4	PCR	1+58.21	26.17' LT.	640.49
5	PCR	1+68.04	26.66' LT.	640.57
6	PT	1+81.81	40.88' LT.	641.36
7	PT	2+12.50	44.36' LT.	641.66
8	PCR	2+28.23	29.67' LT.	641.07
9	PI	3+14.81	33.50' LT.	641.80
10	PCR	4+61.02	33.50' LT.	641.63
11	PCR	5+83.64	33.50' LT.	639.73

CONTROL POINTS

DESCRIPTION	LOCATION	NORTH COORD.	EAST COORD.
"X" CUT IN CONC.	STA -2+67.16 28.78' LT.	5,063.6148	4,294.5884
"X" CUT IN CONC.	STA -1+27.87 33.45' LT.	5,067.5372	4,355.3523
"X" CUT IN CONC.	STA 5+73.30 26.12' RT.	5,000.0000	5,000.0000



NO.	REVISION	BY	DATE

DESIGNED BY: **DEB**

DRAWN BY: **JPS**

CHECKED BY: **JRP**

TOWN OF ADDISON

SCALE
HORIZ 1"=20'
VERT 1"=2'
DATE
APR 1999

TEAGUE NALL AND PERKINS
CONSULTING ENGINEERS

915 Florence Street Fort Worth, Texas 76102 (817) 336-5773

2001 West Irving Blvd. Irving, Texas 75061 (972) 254-1765

STATE OF TEXAS
DELVIN BLACK
31640
REGISTERED PROFESSIONAL ENGINEER
Date: 14 Apr 99

TOWN OF ADDISON, TEXAS
KELLER SPRINGS ROAD/QUORUM DRIVE
PAVING IMPROVEMENTS
PLAN & PROFILE
STA. 0+00 TO STA. 5+90

TNP PROJECT ADD97277
SHEET **1C** OF 20