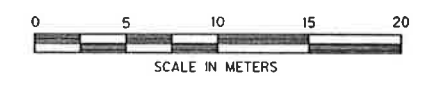
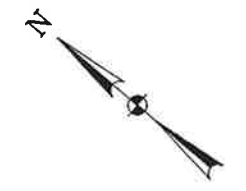
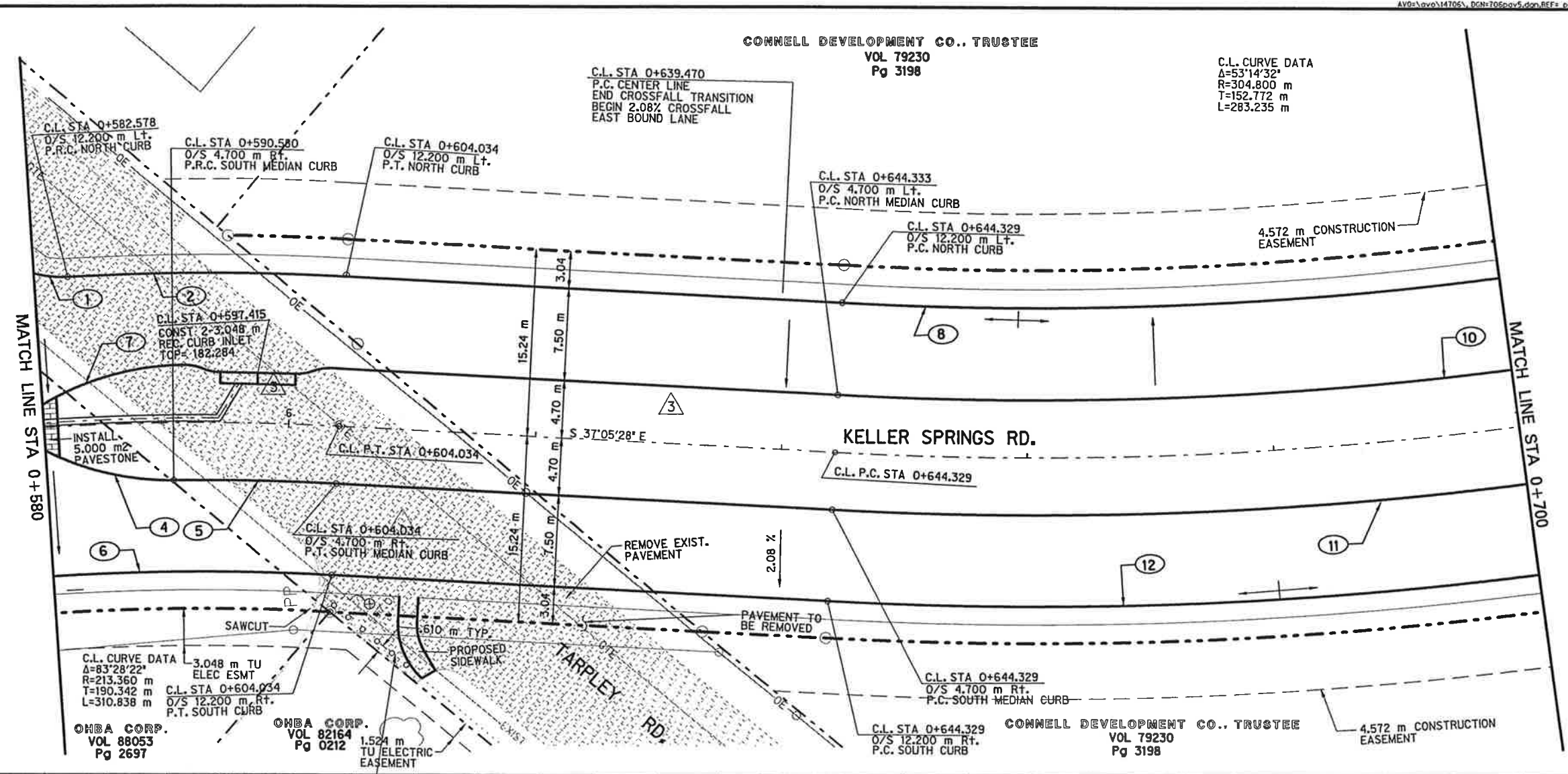


CONNELL DEVELOPMENT CO.. TRUSTEE
VOL 79230
Pg 3198

C.L. CURVE DATA
Δ=53°14'32"
R=304.800 m
T=152.772 m
L=283.235 m



CURVE DATA				
CV.	Δ	R	T	L
1	79°51'28"	8.99m	7.52m	12.53m
2	5°45'44"	225.56m	11.35m	22.68m
4	31°07'32"	22.70m	6.32m	12.33m
5	3°37'15"	208.66m	6.59m	13.18m
6	7°24'14"	201.16m	13.01m	25.99m
7	34°15'31"	22.70m	6.99m	13.57m
8	20°22'08"	292.60m	52.56m	104.02m
10	20°39'26"	300.10m	54.69m	108.19m
11	20°32'10"	309.50m	56.06m	110.93m
12	20°29'07"	317.00m	57.28m	113.33m



CHANGE ORDER NO. 3
MAY 22, 1998 -
OMIT LEFT TURN LANE
RELOCATE CURB INLET
EDIT CURVE DATA TABLE

5
10

PAVING PLAN / PROFILE
STA 0+580 TO STA 0+700
KELLER SPRINGS ROAD
DALLAS COUNTY, TEXAS
TEXAS DEPARTMENT OF TRANSPORTATION

Half Associates
ENGINEERS, ARCHITECTS, SCIENTISTS, PLANNERS, SURVEYORS

DESIGN	DRAWN	NOTES	FED. NO.	STATE	FEDERAL AID PROJECT NO.	SHEET NO.
CADD			8	TEXAS	STP 30 1993 SMM	
DATE	FILE	SCALE	STATE	COUNTY	CONTRACT SECTION NO.	JOB NO.
JULY 1998	TORPAYS	1:200 HORIZ. 1:200 VERT.	10	DALLAS	0018	48 222
						222 CB

