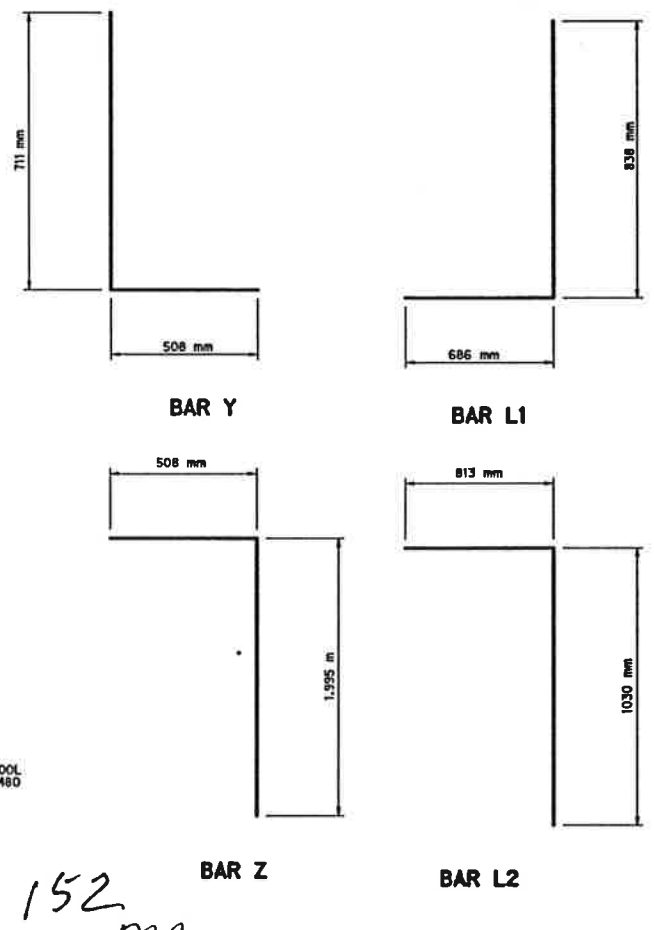
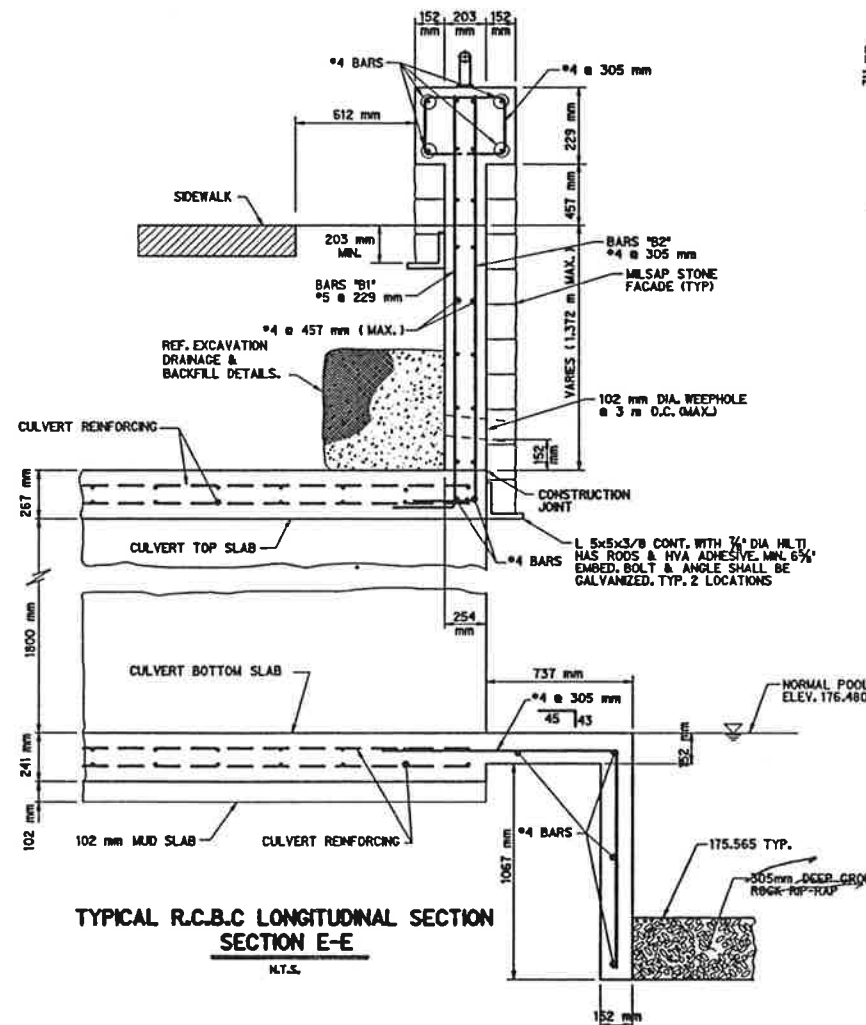
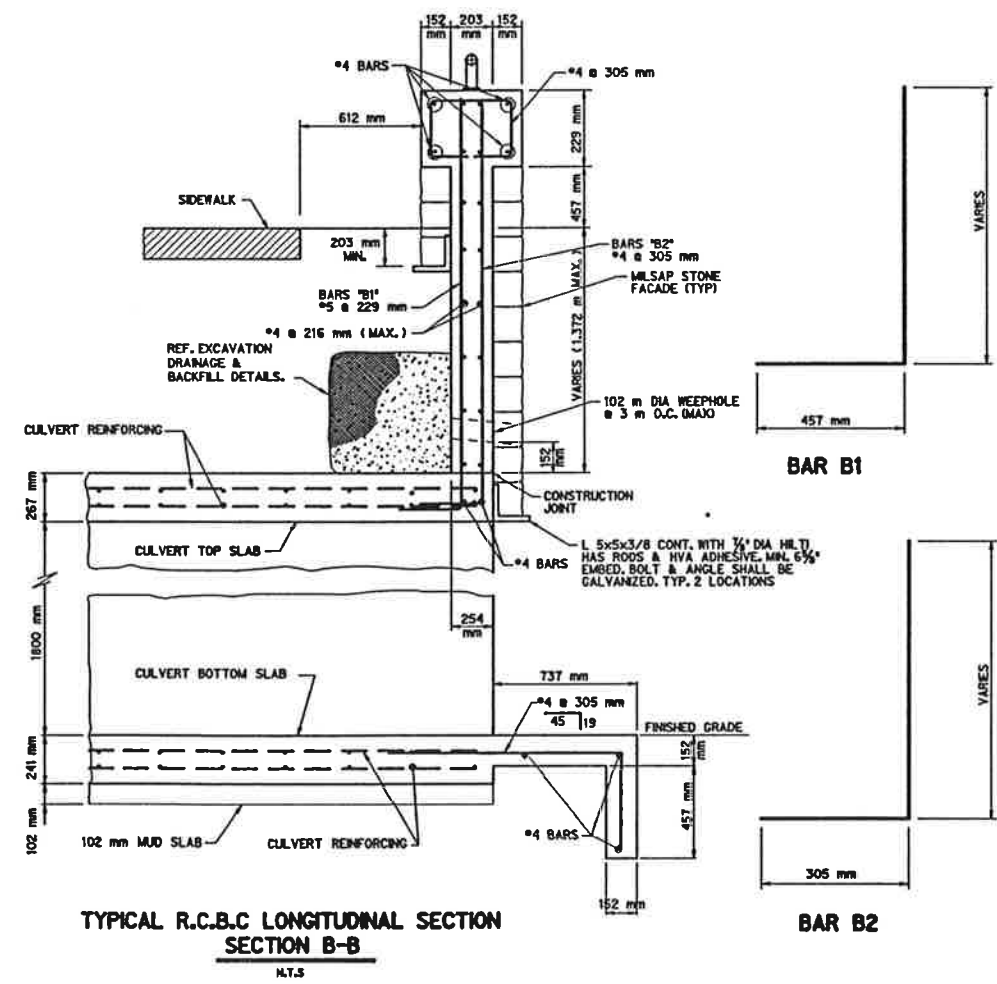


TYPICAL CULVERT SECTION  
SECTION A-A 5 - 3000 mm x 1800 mm R.C.B.C  
N.T.S.



152 mm  
175.565 TYP.  
305mm DEEP CROUTED  
ROCK-RO-TOP

*M. J. Romanowski*  
2/7/97

R.C.B.C.-SECTIONS									
KELLER SPRINGS ROAD									
DALLAS COUNTY, TEXAS									
TEXAS DEPARTMENT OF TRANSPORTATION									
Half Associates									
ENGINEERS, ARCHITECTS, SCIENTISTS, PLANNERS, SURVEYORS									
DESIGN	DRAWN	NOTES	FED. NO.	STATE	FEDERAL AID PROJECT NO.	SHEET			
CADD			4	TEXAS	STP 98 (98) 500	XX			
DATE	FILE	SCALE	STATE	COUNTY	CONTROL	SECTION	JOB	HIGHWAY	
JULY 1998	7983	1:800 HORIZ	TX	DALLAS	9801	48	222	CB	