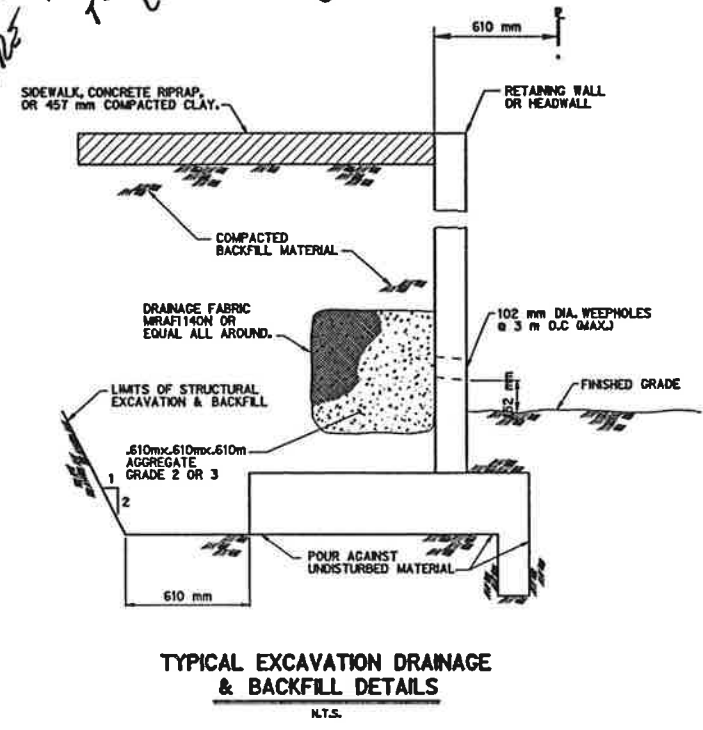
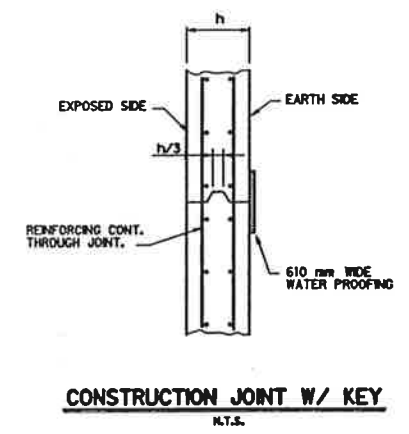
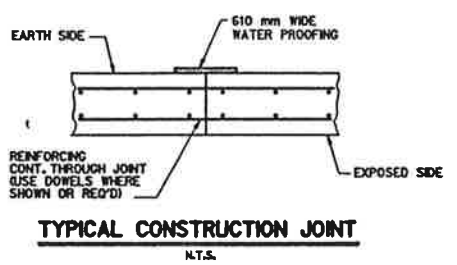
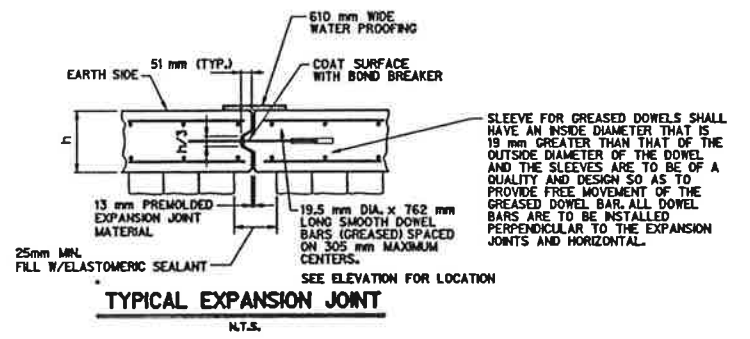
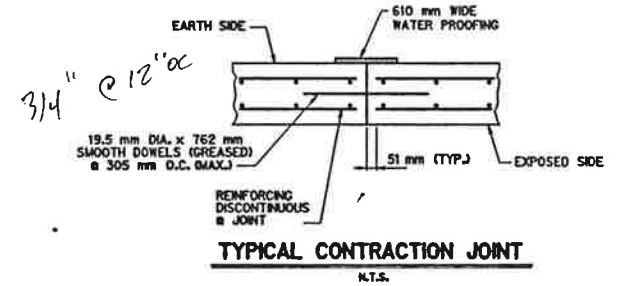


STEEL STOPPED HERE ~ TOP CONTRACTOR CAP #4 TO GET UP TO GANES



NOTE:
ANCHOR MILSAP STONE TO CONCRETE WALL EVERY 3'-0" O.C. w/ HOOKMAN 16 GA. SCREW ON ANCHOR PLATE 315-D AND 4 TIES No. 316 OR APPROVED EQUAL. TIES AND PLATES SHALL BE HOT DIPPED GALVANIZED.



M.R. 7/7/97

4
4

RET. WALL - SECTIONS & DETAILS
KELLER SPRINGS ROAD
DALLAS COUNTY, TEXAS
TEXAS DEPARTMENT OF TRANSPORTATION

Half Associates
ENGINEERS - ARCHITECTS - SCIENTISTS - PLANNERS - SURVEYORS

DESIGN	DRAWN	NOTES	FILE NO.	STATE	FEDERAL AID PROJECT NO.	SHEET NO.	
CA2D				TEXAS	STP 96 1900 000	4	
DATE	FILE	SCALE	STATE DIST. NO.	COUNTY	CONTROL SECTION NO.	JOB NO.	
JULY 1997	7084	1:800 HORIZ	19	DALLAS	999	48	223

Per City - Use at AS