

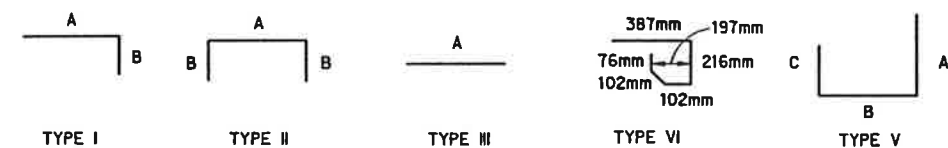
REINFORCING BAR SCHEDULE

LENGTH	BAR NUMBER	BAR TYPE	SIZE	REQUIRED	A	B	C
8	A	I	#3	9	965mm	152mm	-
	B	I	#3	2	2032mm	152mm	-
	C	II	#4	VARIES	2641mm	152mm	-
	D	II	#4	12	2641mm	152mm	-
	E	IV	#3	7	*	*	*
	F	III	#3	2	1219mm	-	-
	G	V	#4	10	**	965mm	**
	H	III	#4	VARIES	965mm	-	-
10	A	I	#3	14	965mm	152mm	-
	B	I	#3	2	2641mm	152mm	-
	C	II	#4	VARIES	3251mm	152mm	-
	D	II	#4	12	3251mm	152mm	-
	E	IV	#3	8	*	*	*
	F	III	#3	2	1219mm	-	-
	G	V	#4	12	**	965mm	**
	H	III	#4	VARIES	965mm	-	-
I	III	#4	4	**	-	-	
N	III	#4	2	457mm	-	-	

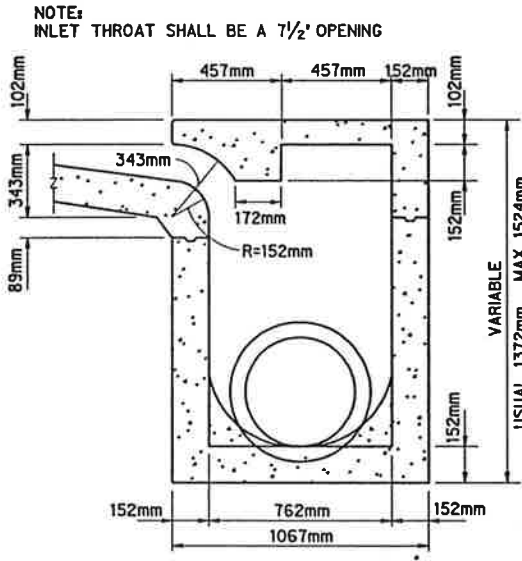
GENERAL NOTES:

1. OUTLET PIPE MAY BE LOCATED IN ANY WALL BUT SHALL NOT BE LOCATED AT ANY CORNER OR PILASTER.
2. MANHOLE RING WITH LOCKING COVER SHALL BE PLACED OVER THE OUTLET PIPE, REINFORCING BARS ARE TO BE ADJUSTED ACCORDINGLY.
3. WHEN PLANS CALL FOR A 3.048 m INLET REFER TO THE 10 FT LENGTH ON THE BAR SCHEDULE AND 10 FT INLET OPENING. LIKEWISE, WHEN PLANS CALL FOR 2.438 m INLET REFER TO 8 FT LENGTH AND INLET OPENING.

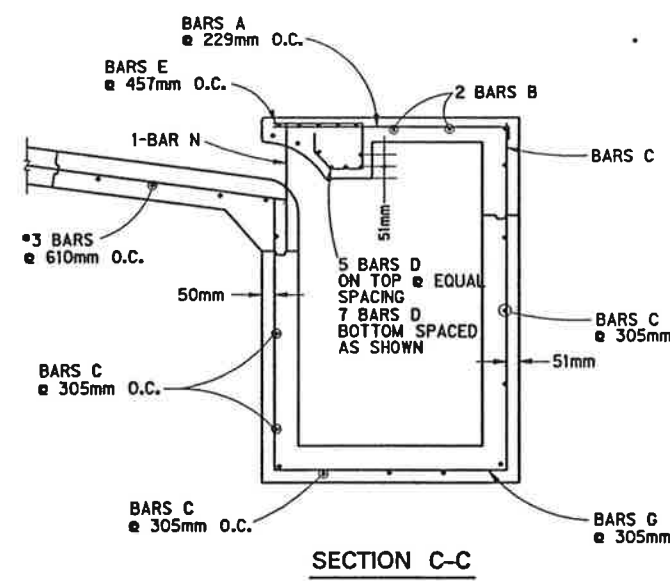
* SEE BAR DIAGRAM FOR DIMENSIONS.
 ** LENGTH VARIES DUE TO DEPTH OF INLET.



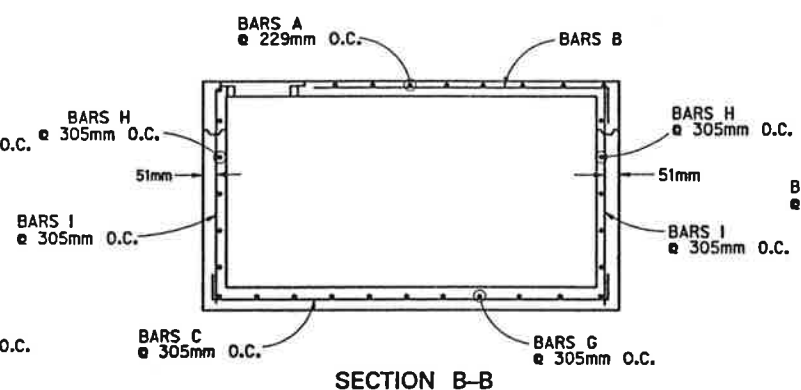
BAR DIAGRAM



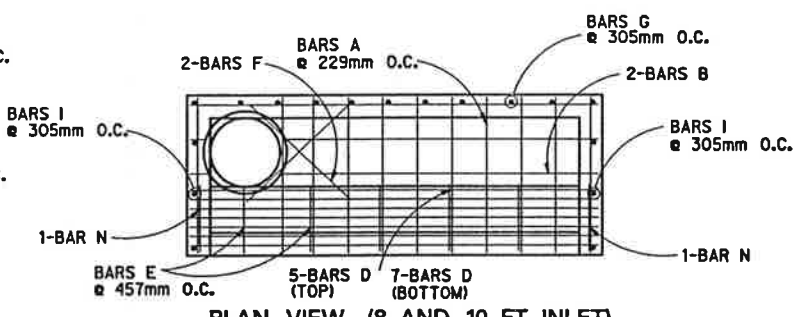
TYPICAL CROSS SECTION C-C



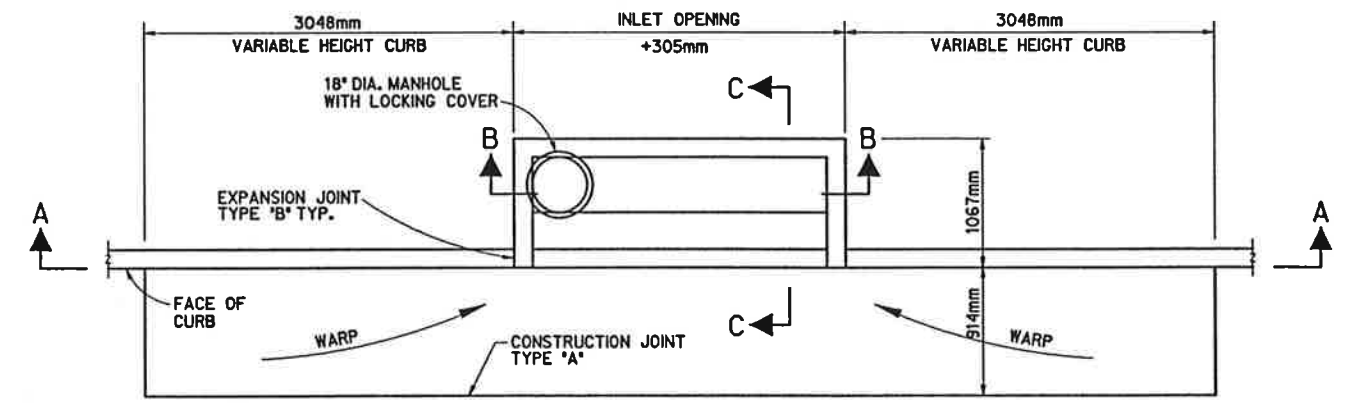
SECTION C-C



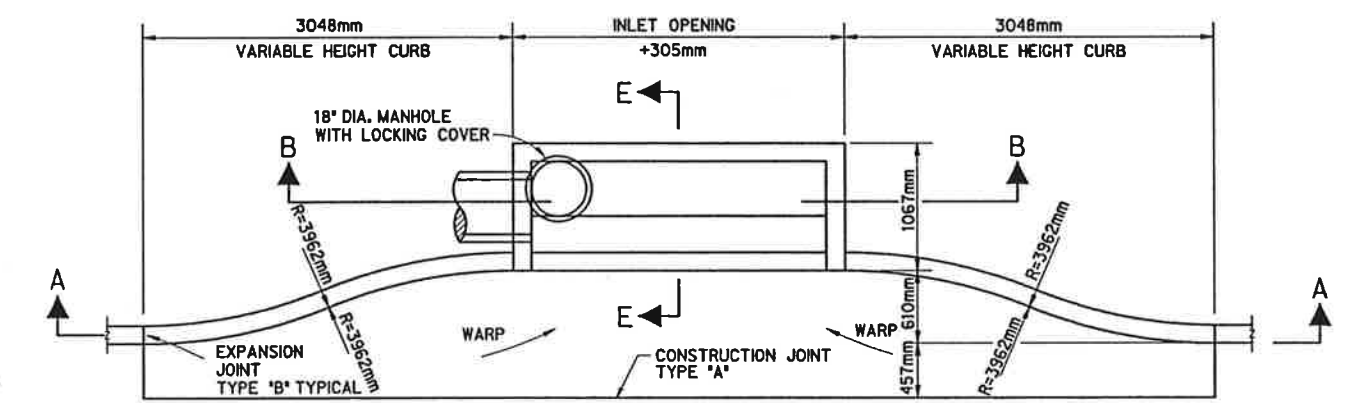
SECTION B-B



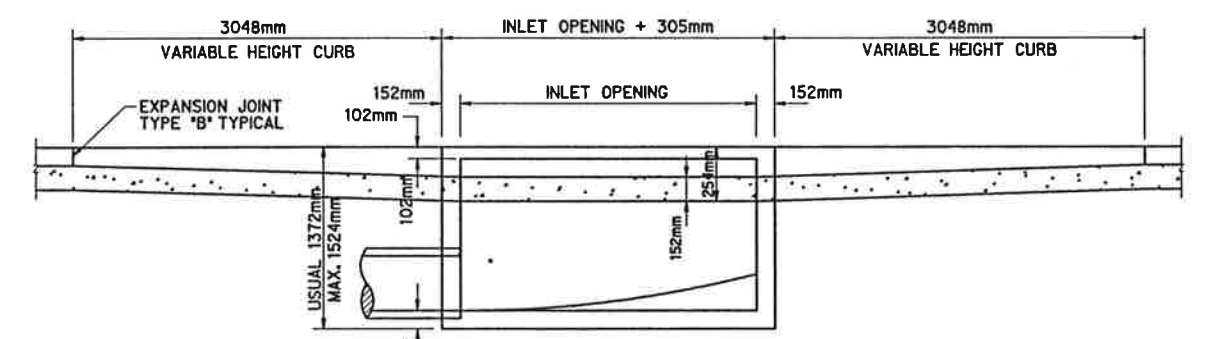
PLAN VIEW (8 AND 10 FT INLET)
(2.438m AND 3.048m)



CURB LINE INLET (8 AND 10 FT)
(2.438m AND 3.048m)



RECESSED INLET (8 AND 10 FT)
(2.438m AND 3.048m)



SECTION A-A (8 AND 10 FT INLETS)
(2.438m AND 3.048m)

Professional Engineer Seal for Keller Springs Road, Dallas County, Texas, dated 7/7/97.

INLET DETAILS									
KELLER SPRINGS ROAD									
DALLAS COUNTY, TEXAS									
TEXAS DEPARTMENT OF TRANSPORTATION									
Half Associates									
ENGINEERS - ARCHITECTS - SCIENTISTS - PLANNERS - SURVEYORS									
DESIGN	DRAWN	NOTES	FED. PROJ. NO.	STATE	FEDERAL AID PROJECT NO.	SHEET NO.			
CAZD				TEXAS		1			
DATE	FILE	SCALE	STATE DIST. NO.	COUNTY	CONTROL NO.	SECTION NO.	JOB NO.	HIGHWAY NO.	
AAY 1998	7099D7L	N.T.S.	10	DALLAS	07B	48	322	CB	