

DESIGN DATA

SPAN LENGTH	25.50	FT
DESIGN HEIGHT	17.08	FT
TOWER HEIGHT	16.00	FT
DESIGN SIGN AREA	255.00	SF
ACTUAL SIGN AREA	100.75	SF
PENETROMETER VALUE	ASSUME 15	

STRUCTURE SIZE

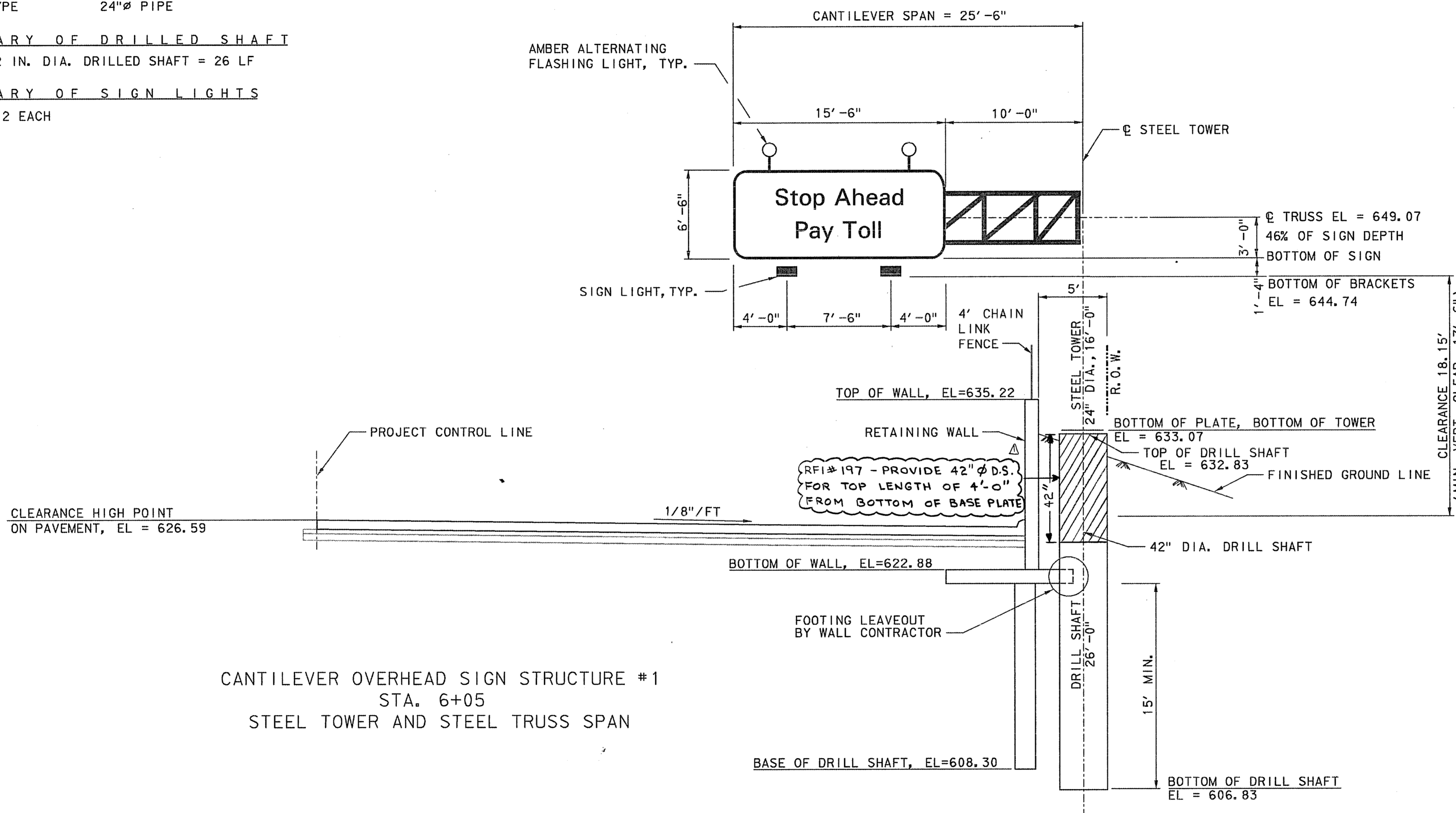
TRUSS TYPE	4.0' x 4.0'
TOWER TYPE	24"Ø PIPE

SUMMARY OF DRILLED SHAFT

TOTAL 42 IN. DIA. DRILLED SHAFT = 26 LF

SUMMARY OF SIGN LIGHTS

TOTAL = 2 EACH



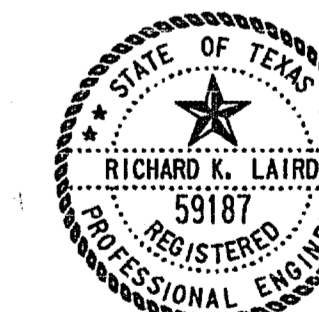
CANTILEVER OVERHEAD SIGN STRUCTURE #1
STA. 6+05
STEEL TOWER AND STEEL TRUSS SPAN

GENERAL NOTES:

1. THIS OVERHEAD SIGN STRUCTURE WILL BE CONSTRUCTED WITH STEEL TOWER AND STEEL TRUSS.
2. TRUSS CONSTRUCTION SHALL CONFORM TO STANDARD DRAWINGS NO. SS-23, SS-24, AND SS-25.
3. SIGN, SIGN LIGHT BRACKETS, AND SIGN LIGHTS WILL BE INSTALLED UNDER THIS CONTRACT.
4. SEE STANDARD DRAWINGS NO. SS-26 AND SS-27 FOR ADDITIONAL INFORMATION.

THE SEAL APPEARING ON THIS DOCUMENT WAS AUTHORIZED BY RICHARD K. LAIRD, P.E. NO. 59187 ON JANUARY 12, 1999. ALTERATION OF A SEALED DOCUMENT WITHOUT PRIOR NOTIFICATION TO THE RESPONSIBLE ENGINEER IS AN OFFENSE UNDER THE TEXAS ENGINEERING PRACTICE ACT.

FINAL RECORD DRAWING
Date: 12/25/99



△ REVISED PER RFI# 157

No.	REVISION	BY	DATE
NORTH TEXAS TOLLWAY AUTHORITY ADDISON AIRPORT TUNNEL			
CANTILEVER OVERHEAD SIGN STRUCTURE #1 STA. 6+05			
MATED CONSULTING ENGINEERS, INC. 5540 PETERSON LANE SUITE 225 DALLAS, TEXAS 75240 (972) 233-0700			SECTION XIII
DRAWN SA	DATE 5/97	DESIGNED RKL	DATE 5/97
CHECKED SCF	DATE 5/97	SCALE 1" = 5'-0"	
CONTRACT No. DNT-260 SHEET 13 OF 52			