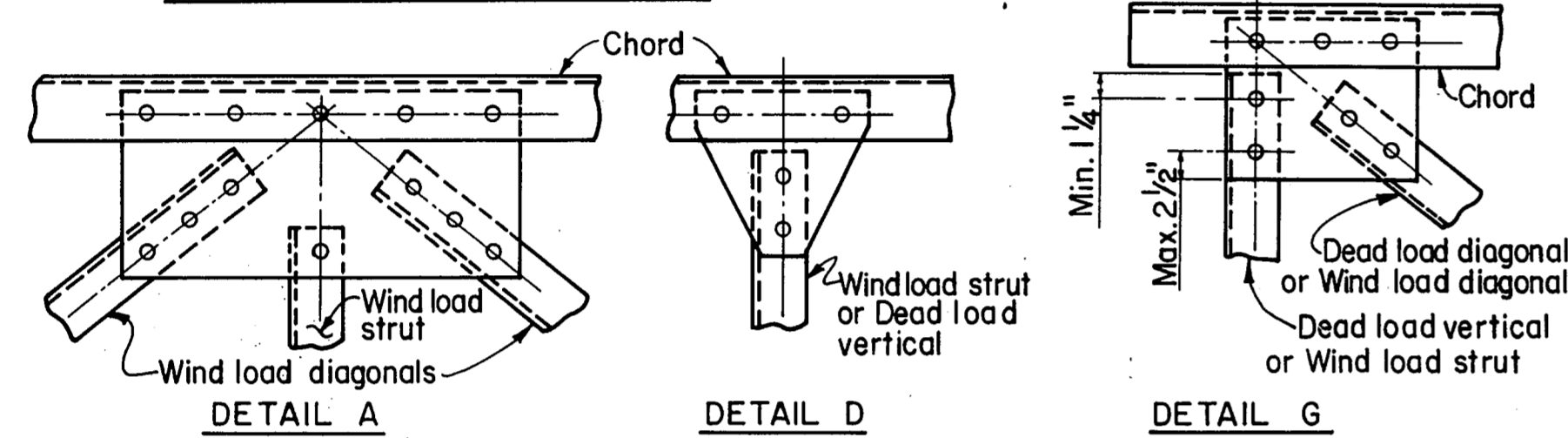


CONNECTION PLATE DETAIL

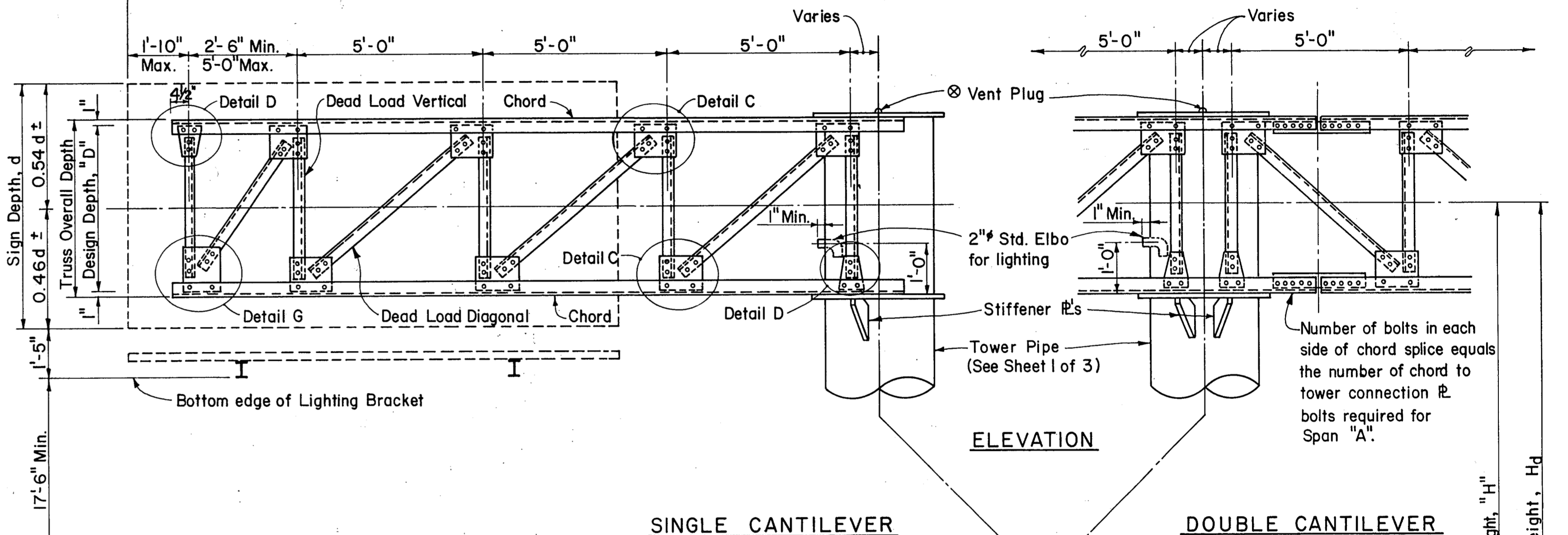
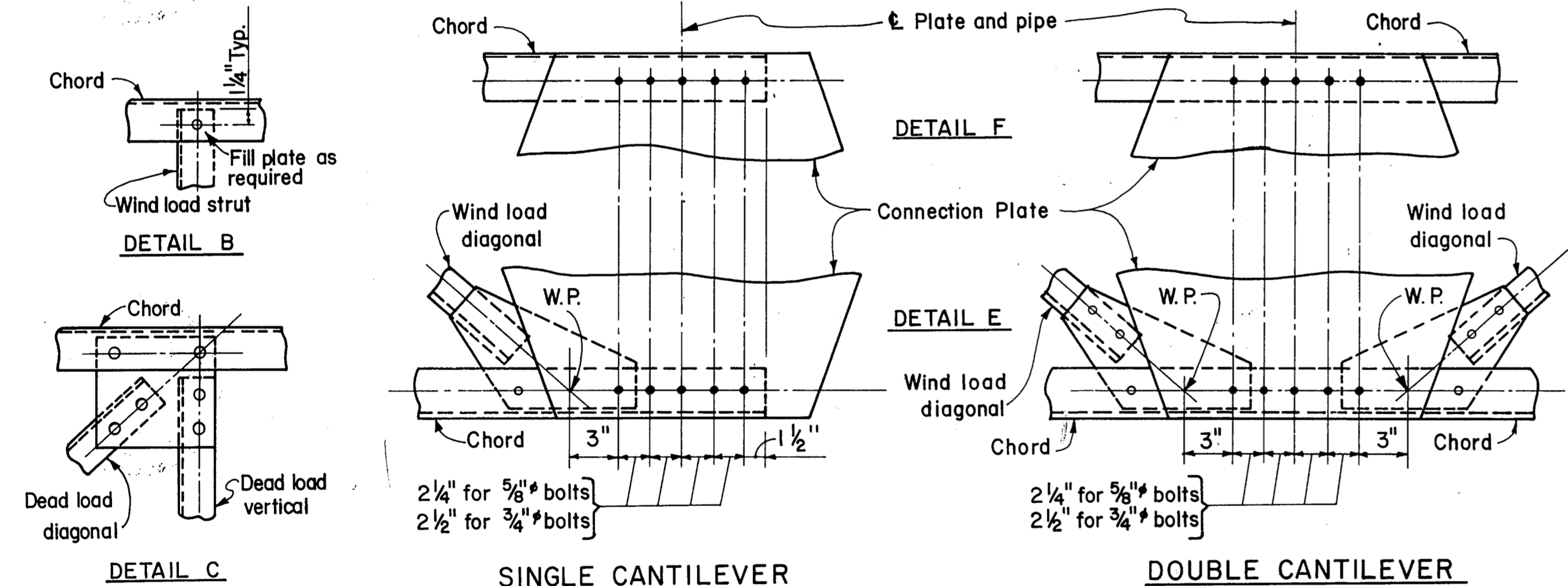
STIFFENER R. DETAIL

TRUSS SECTION (DIAGONALS NOT SHOWN)



NUMBER OF BOLTS REQD. IN GUSSET TO CHORD CONNECTION

| TOTAL NO. OF BOLTS IN DIAGS. IN JOINT | 2 | 3 | 4 | 5 | 6 | 8 | 10 |
|---------------------------------------|---|---|---|---|---|---|----|
| 0 | 2 | 2 | 3 | 3 | 4 | 4 | 6 |



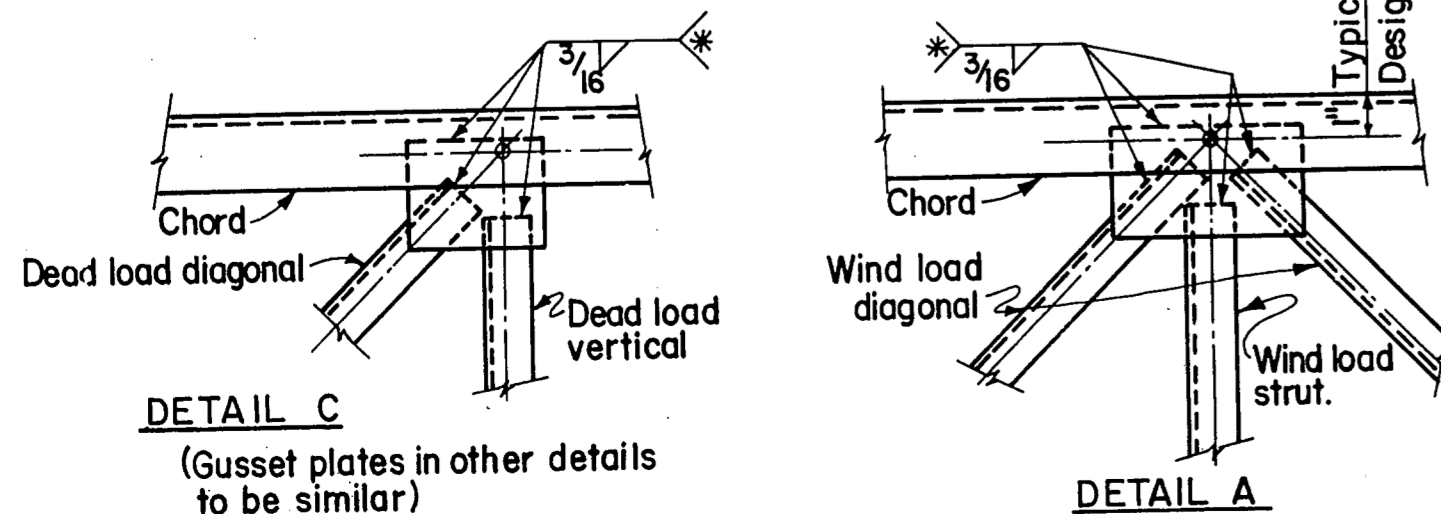
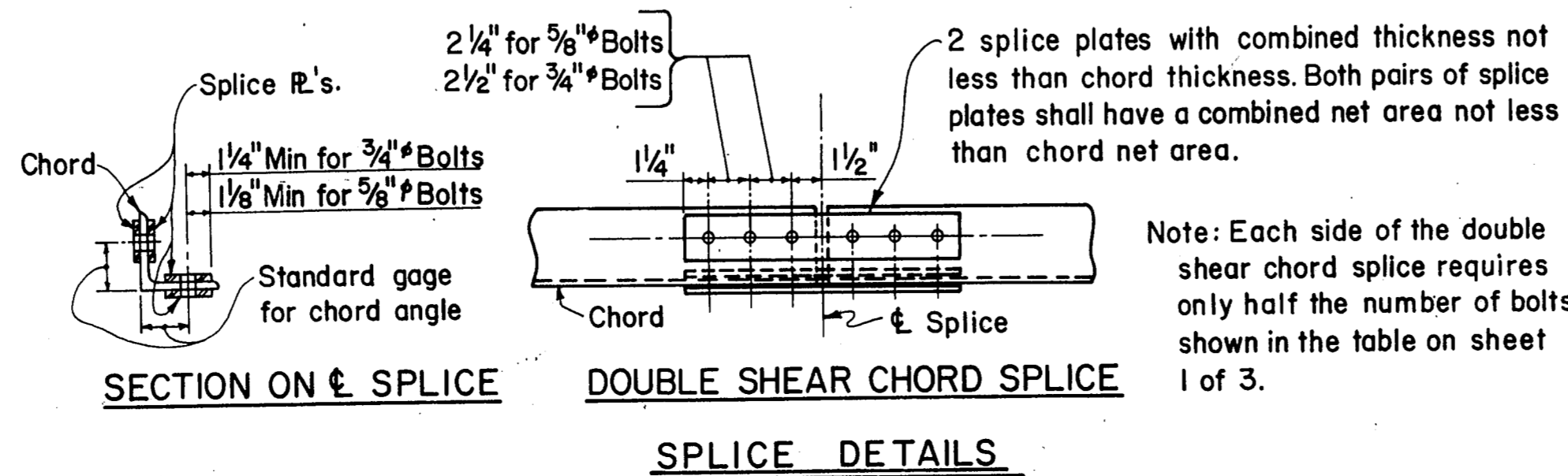
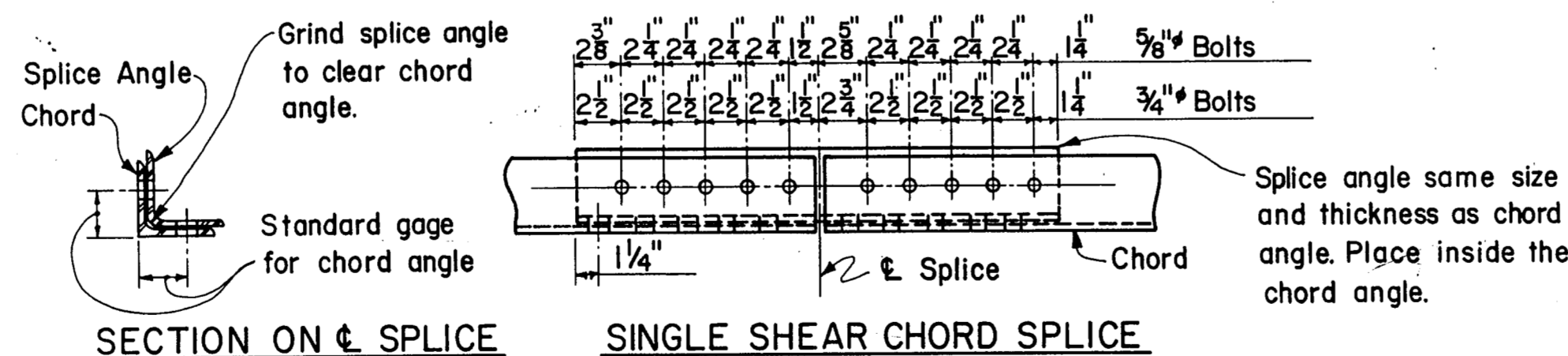
NOTE: Cap shall be solid steel sheet $\frac{3}{8}$ " nominal thickness. Drill, tap and plug galvanizing vent. Weld plate to pipe with $\frac{3}{8}$ " weld all around.

See Sheet 3 of 3 for Hand Hole, Base R., Anchor Bolt and Foundation Details.

*** MINIMUM LENGTH OF 3/16" FILLET WELD REQUIRED**

| NUMBER OF BOLTS | TO REPLACE 5/8" BOLTS | TO REPLACE 3/4" BOLTS |
|-----------------|-----------------------|-----------------------|
| 1 | 2" | 3" |
| 2 | 4" | 6" |
| 3 | 6" | 9" |
| 4 | 8" | 11 1/2" |
| 5 | 10" | 14 1/2" |
| 6 | 12" | 17 1/2" |
| 7 | 14" | 20" |

CONNECTION DETAILS



GENERAL NOTES:
 Design conforms to 1975 AASHTO Standard Specifications for Structural Supports for Highway Signs, Luminaires and Traffic Signals and Interim revisions thereto. Connection details are typical only. Actual size of member and number of bolts will vary. The details on this sheet are intended as a guide only. See Sheet 1 of 3 for number of bolts and size of members.
 Gusset plates to be same thickness as thickest web member in connection.

FINAL RECORD DRAWING
 Date: 12/25/99

REPRODUCED FROM STATE DEPARTMENT OF HIGHWAYS AND PUBLIC TRANSPORTATION STANDARD DRAWING COSSD

| NO. | | REVISION | | DATE | |
|-----|--|----------------|--|------|---------|
| 1 | | MISC. REVISION | | PJ | 9-19-91 |

TEXAS TURNPIKE AUTHORITY
DALLAS NORTH TOLLWAY

CANTILEVER OVERHEAD
 SIGN SUPPORT DETAILS 28

HNTB
 HOWARD NEEDLES TAMMEN & BERENSON

| DRAWN | DATE | DESIGNED | DATE |
|---------|------|----------|------|
| | | | |
| CHECKED | DATE | SCALE | |
| | | | |

STANDARD DRAWING NO. SS-24