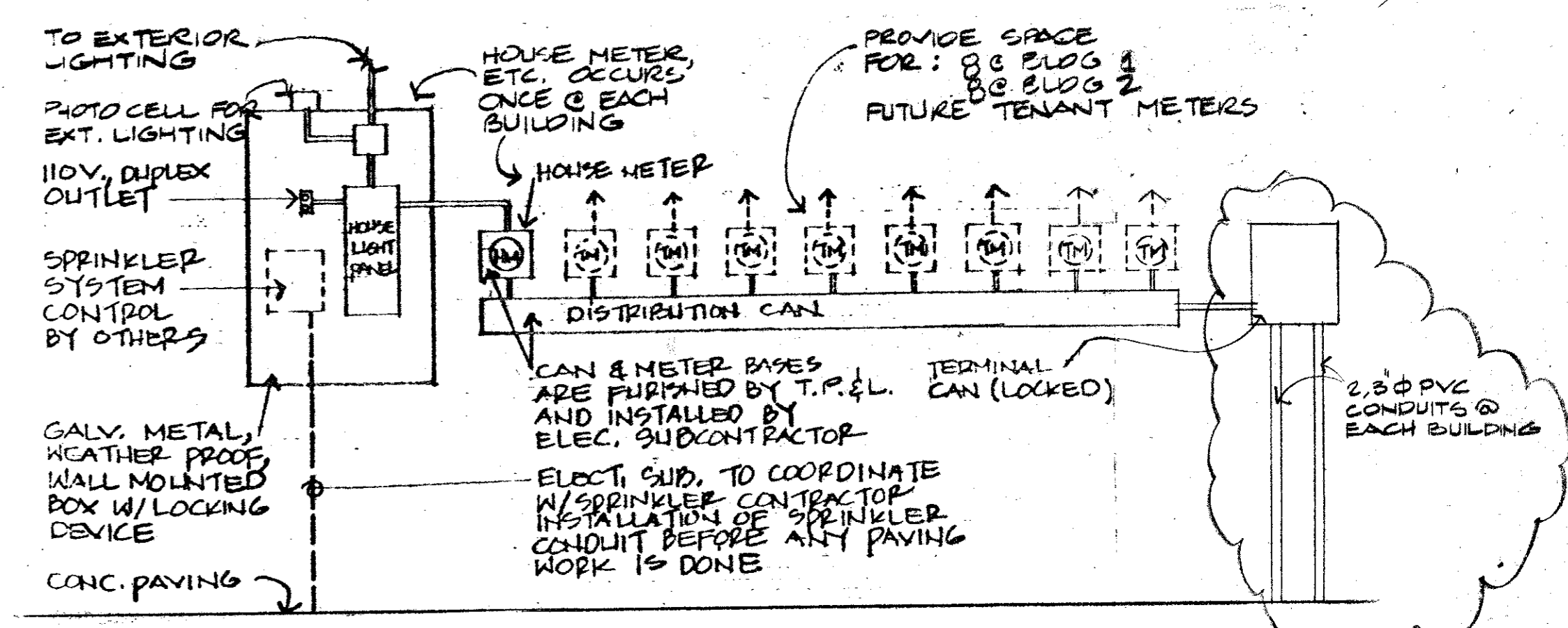
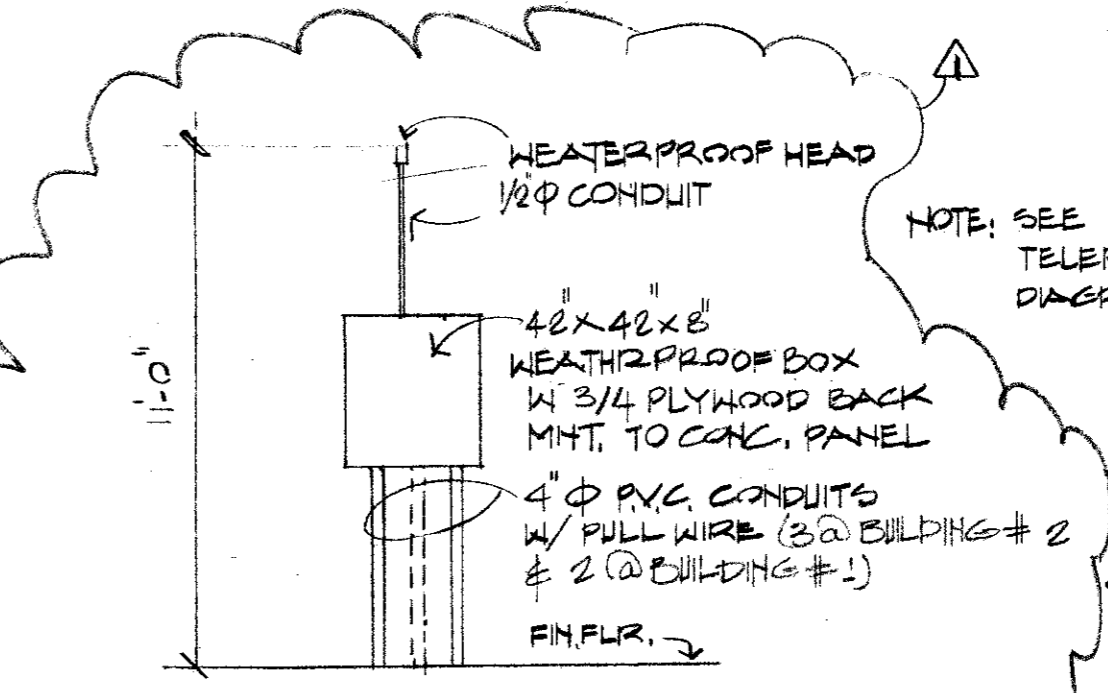


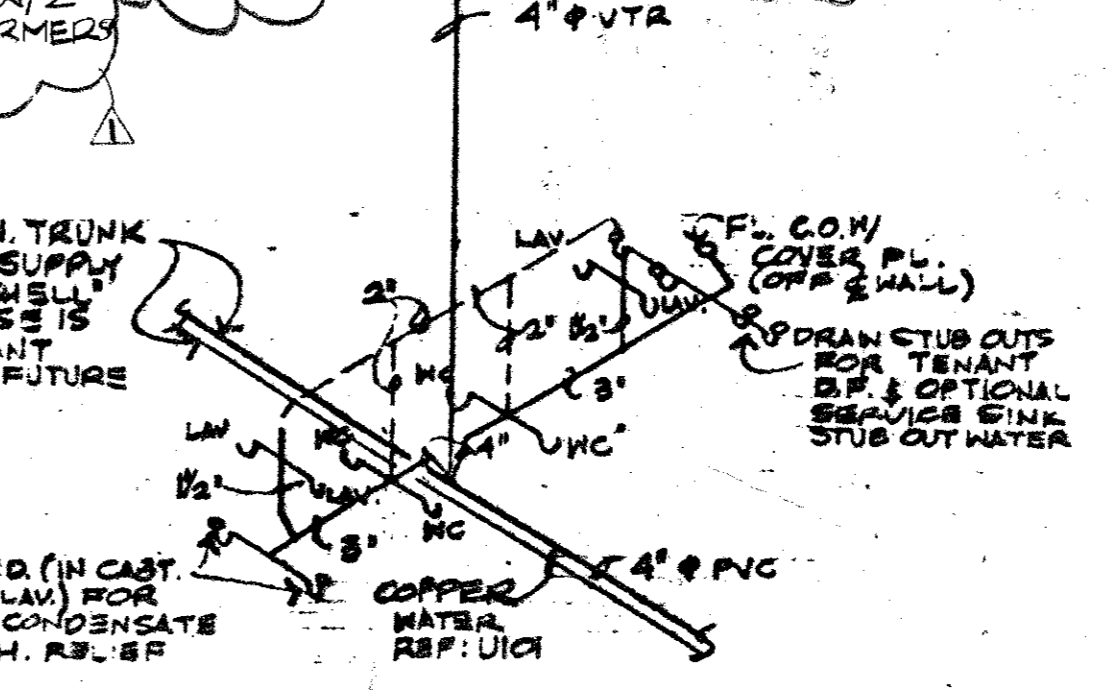
EXTERIOR LIGHT FIXTURE SCHEDULE				
SYMBOL	DESCRIPTION	MFG. #	QUAN.	REMARKS
A	150 W INCANDESCENT RECESSED, 110V.	HALO # H-7 W/ #4 26 G REFL. CONE	8	MOUNT IN CANOPY COFFIT
B	250W MERCURY VAPOR SURFACE MTD. FLOOD-LIGHT, 208 V.	HUBBEL # MVM-250C-112	5	REFER EXT. ELEVATIONS FOR EXACT MOUNTING LOCATIONS
C	100W MERCURY VAPOR W/ 18" Ø OPAL WHITE GLOBE ON 8' POLE, 110V.	SPALDING # 802 W/ #902-8' POLE (BRONZE FINISH, NO PAINT REQ'D)	9	MOUNT ON CONC. BASE REF. P105, PROVIDE W.P. 110V. OUT-LETS TO BE CONT. POWERED - UNSWITCHED



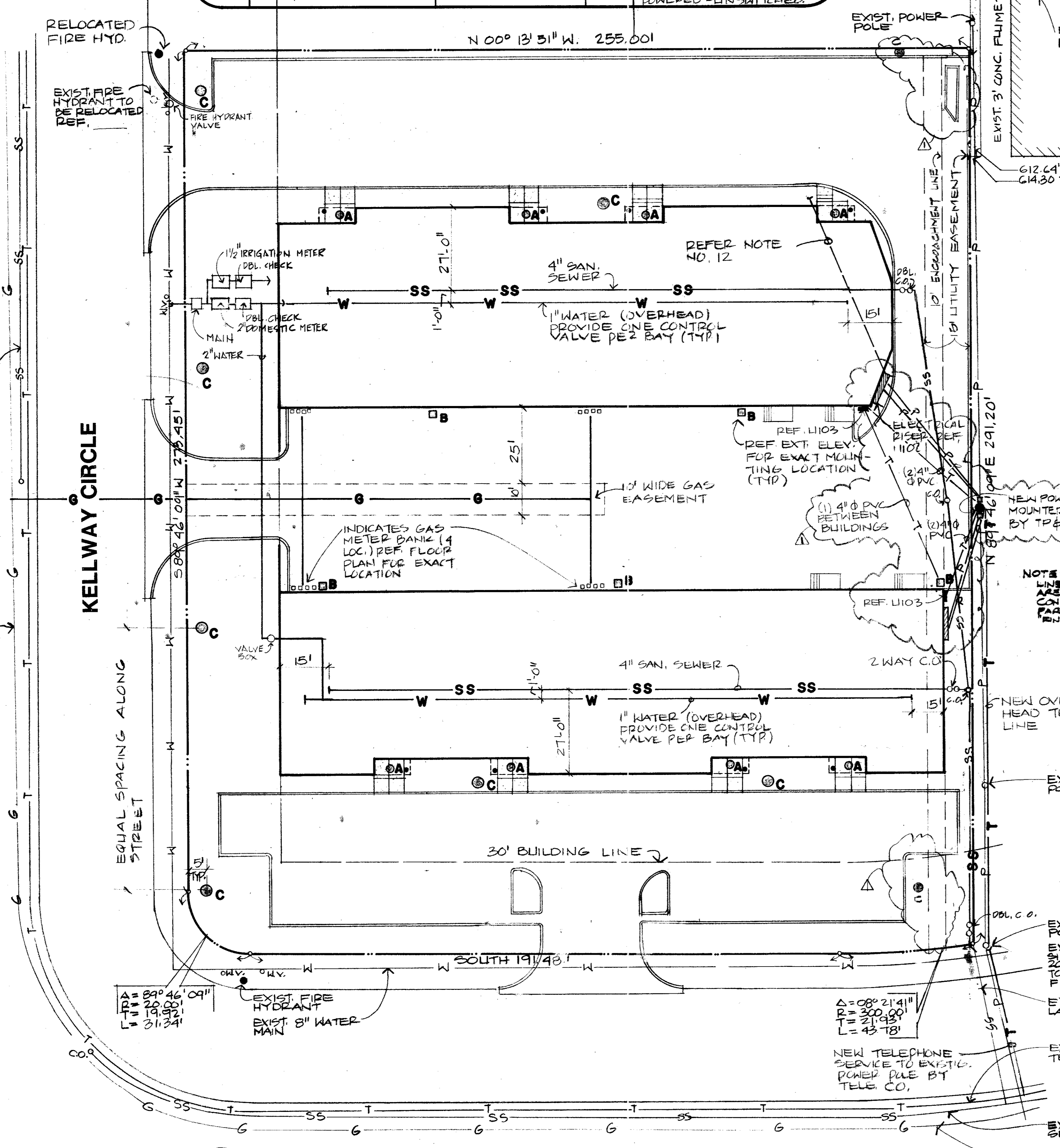
**U102 ELECTRICAL SCHEMATIC**  
NO SCALE



**U103 TELE. SCHEMATIC**  
NO SCALE



**U104 SCHEMATIC PLUMBING RISER**  
NO SCALE



**U101 UTILITY SITE PLAN**  
SCALE: 1" = 20'-0"

**UTILITY NOTES**

- THIS PLAN INDICATES TOTAL SITE UTILITIES FOR OVERALL COORDINATION AMONG ALL TRADES.
- VERIFY EXISTENCE, LOCATIONS AND SIZES OF ALL EXISTING UTILITIES SHOWN ON THIS SHEET BEFORE STARTING WORK.
- GRAVITY FLOW SEWER TO BE INSTALLED BEFORE ALL OTHER SUBSURFACE UTILITIES, BY PLUMBING CONTRACTOR.
- REFER TO BUILDING LEASE PLANS FOR EXACT LOCATIONS OF TOILETS AND COFFEE BARS.
- PLUMBING CONTRACTOR TO INSTALL ENTIRE NEW WATER SERVICE SHOWN ON THIS SHEET.
- 3" PVC, SCHEDULE 80, CONDUIT TO BE USED FOR PIPE SLEEVES AS SHOWN ON PAVING PLAN, P1, FOR IRRIGATION SYSTEM AND INSTALLED PRIOR TO PAVING. PER DETAIL 105 BY GENERAL CONTRACTOR. REFER TO SEPARATE PLANS FOR IRRIGATION DESIGN. ALL IRRIGATION CONTROLS ARE TO BE LOCATED AT REAR OF BUILDING I AND BUILDING II.
- PRIMARY SERVICE FROM SUPPLY AT POLE TO POLE MOUNTED TRANSFORMER TO BE BY TEXAS POWER & LIGHT COMPANY.
- ELECTRICAL CONTRACTOR TO SUPPLY AND INSTALL THE SECONDARY CONDUITS AND SERVICE. CONDUIT SIZE TO BE RESPONSIBILITY OF ELECTRICAL CONTRACTOR.
- ALL EXTERIOR LIGHTING, POWER FOR SPRINKLER CONTROLS TO BE ON HOUSE PANEL AND METER. ALL EXTERIOR LIGHTING TO BE ON PHOTOCELL CONTROLLED CIRCUITS.
- 4 HOSE BIBBS ARE TO BE INSTALLED BY IRRIGATION CONTRACTOR. HOSE BIBBS TO BE FREEZE-PROOF. REFER TO SEPARATE LANDSCAPE PLANS FOR LOCATIONS.
- TAP AND CONNECTION OF OWNER'S BRANCH GAS LINES TO MAIN GAS LINE TO BE MADE BY GAS COMPANY AT THE EDGE OF EASEMENT. PLUMBING CONTRACTOR TO INSTALL BRANCH GAS LINE FROM EDGE OF EASEMENT TO METER. METERS BY GAS COMPANY. PAINTING CONTRACTOR TO PAINT METERS TO MATCH MASONRY BLOCK.
- ELECTRICAL CONTRACTOR TO PROVIDE 1-1/4" Ø CONDUIT WITH PULL WIRE FROM SPRINKLER CONTROL AT REAR OF BUILDING I TO THE FRONT OF BUILDING AS SHOWN.
- ALL CONDUITS GOING TO, OR PASSING THROUGH, PLANTERS SHALL BE ROUTED NEAR CURB EDGE TO ALLOW FOR PLANTING OF TREES.
- PLUMBING CONTRACTOR AND UTILITY CONTRACTOR SHALL BE RESPONSIBLE FOR VERIFICATION OF SANITARY SEWER FLOW LINES AT TAPS AND AT HIGHEST END OF USE AND SHALL BE RESPONSIBLE FOR COORDINATION AND DETERMINATION OF SLOPE OF THESE LINES PRIOR TO ANY SITE WORK.
- REFER TO SHEET P-1 FOR LOCATIONS AND QUANTITIES OF PIPE SLEEVES UNDER DRIVEWAYS.

REVISOR WATER & SANITARY SEWER ROUTING PER HAS BUILT

**KELLWAY LIMITED**  
OFFICE / WAREHOUSE  
ADDISON TEXAS

Richard Ferrera Architect, Inc.  
4020 McEwen / Suite 120  
Dallas, Texas 75234  
214-980-7428

Date 1/23/84  
REVISION 4-13-84  
REVISION 12/27/84

Sheet 11 of 11  
Job 83-74

As built  
2/28/84  
[Signature]

REGISTERED ARCHITECT  
STATE OF TEXAS  
#1983

B7-5